

I Knuckle

Table for I knuckle and cylinder

Cylinder Accessory	SE						SI									
	32	40	50	63	80	100	125	32	40	50	63	80	100	125	160	200
F-M10125II	●							●								
F-M12125II		●							●							
F-M16150II			●	●						●	●					
F-M20150II					●	●						●	●			
F-M27200II							●							●		
F-M36200II															●	●

Cylinder Accessory	SGC				SC					
	125	160	200	250	32	40	50	63	80	100
F-M10125II					●					
F-M12125II						●				
F-M16150II							●	●		
F-M20150II									●	●
F-M27200II	●									
F-M36200II		●	●							
F-M42200II				●						

Cylinder Accessory	MA						MAL				MI								
	16	20	25	32	40	50	63	20	25	32	40	8	10	12	16	20	25	32	40
F-M04070II																			
F-M06100II	●																		
F-M08125II		●																	
F-M10125II			●	●															
F-M12125II																			
F-M12125IA					●														
F-M14150J						●	●												

Cylinder Accessory	ACQ									
	12	16	20	25	32	40	50	63	80	100
F-M05080IQ	●									
F-M06100IQ		●								
F-M08125IQ			●							
F-M10125IQ				●						
F-M14150IQ					●	●				
F-M18150IQ							●	●		
F-M22150IQ									●	
F-M26150IQ										●

Cylinder Accessory	JSI						
	32	40	50	63	80	100	125
F-M10125J	●						
F-M14150J		●					
F-M18150J			●	●			
F-M22150J					●		
F-M26150J						●	
F-M27200J							●

Cylinder Accessory	MF			
	20	25	32	40
F-M08125IF	●			
F-M10125IF		●	●	
F-M14150IF				●

Cylinder Accessory	PB				
	4	6	10	12	16
F-M04070IB			●		
F-M05080IB				●	●



Ordering code

F — M16 150 I I

Accessories code: F — M16 150 I I

Knuckle: I I Knuckle

Screw thread: M16 M16

Thread pitch: 150 1.5mm

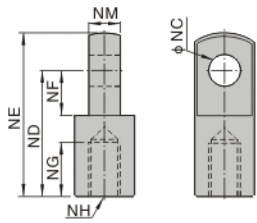
Code: I ISO standard type

Screw thread	Thread pitch	Code
M04 M4	070 0.7mm	I ISO standard type
M05 M5	080 0.8mm	J JSI series
M06 M6	100 1.0mm	Q ACQ series
M08 M8	125 1.25mm	A MA series
M10 M10		B PB series
M12 M12		F MF series
M14 M14	150 1.5mm	
M16 M16		
M18 M18		
M20 M20		
M22 M22		
M26 M26		
M27 M27	200 2.0mm	
M36 M36		
M42 M42		

I Knuckle

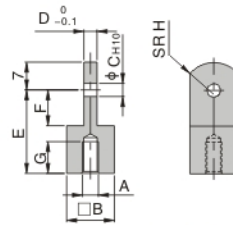
■ Dimensions

ISO standard type



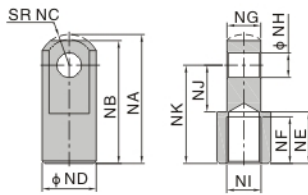
Type/Item	NC	ND	NE	NF	NG	NH	NM
F-M04070II	4	16	21	6.8	8	M4X0.7	3.9
F-M06100II	5	21	28	8.5	8	M6 × 1.0	6
F-M08125II	8	30	40	11	15	M8 × 1.25	8
F-M10125II	10	40	50	15	20	M10 × 1.25	10
F-M12125II	12	48	62	24	20	M12 × 1.25	12
F-M16150II	16	64	82	32	23	M16 × 1.5	16
F-M20150II	20	80	102	40	30	M20 × 1.5	20
F-M27200II	30	110	139	51	45	M27 × 2.0	30
F-M36200II	35	144	181	65	55	M36 × 2.0	35
F-M42200II	40	168	211	85	62	M42X2.0	40

PB Series



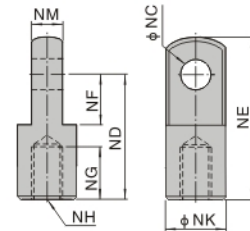
Type/Item	A	B	C	D	E	F	G	H
F-M04070IB	M4 × 0.7	12	3.3	3	21	9.1	7.5	8
F-M05080IB	M5 × 0.8	12	5	6.3	25	14.1	7.5	12

JSI Series



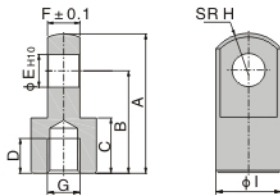
Type/Item	NA	NB	NC	ND	NE	NF	NG	NH	NJ	NK	NI
F-M10125J	42	40	12	20	17	14	13.8	10	16	30	M10 × 1.25
F-M14150J	52.5	50	12.5	22	21	19	13.8	10	19	40	M14 × 1.5
F-M18150J	66.5	64	16.5	28	27	24	19.8	14	24	50	M18 × 1.5
F-M22150J	83.5	80	23.5	40	29	26	29.8	22	34	60	M22 × 1.5
F-M26150J	83.5	80	23.5	40	29	26	29.8	22	34	60	M26 × 1.5
F-M27200J	120.5	119	28.5	45	40	36	31.8	25	34	92	M27 × 2.0

MA Series



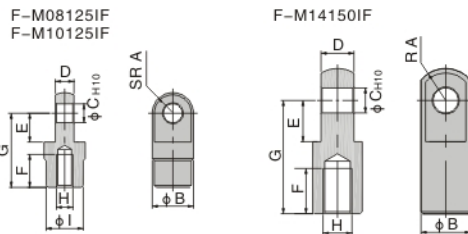
Type/Item	NC	ND	NE	NF	NG	NH	NK	NM
F-M12125IA	10	45	57	16.5	23	M12 × 1.25	24	14

ACQ Series



Type/Item	A	B	C	D	E	F	G	H	I
F-M05080IQ	21.5	16	9	6	5	4.7	M5x0.8	6.3	10
F-M06100IQ	32	25	11	8	5	6.2	M6x1.0	8.1	12
F-M08125IQ	34	25	13.5	8.5	8	7.7	M8x1.25	10.3	16
F-M10125IQ	41	30	16	11	10	9.7	M10x1.25	12.8	20
F-M14150IQ	42	30	16	14	10	17.6	M14x1.5	12	22
F-M18150IQ	56	40	20	18	14	21.6	M18x1.5	16	28
F-M22150IQ	71	50	23	21	18	27.6	M22x1.5	21	38
F-M26150IQ	79	55	24	22	22	31.6	M26x1.5	24	44

MF Series



Type/Item	A	B	C	D	E	F	G	H	I
F-M08125IF	9.5	20	9	9	14	16	36	M8 × 1.25	18
F-M10125IF	9.5	20	9	9	14	18	38	M10 × 1.25	18
F-M14150IF	15	24	12	16	20	22	55	M14 × 1.5	-

