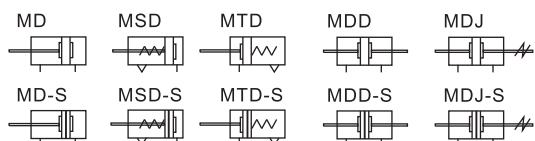


Cilindro a più posizioni di montaggio

Serie MD



Simbolo



Caratteristiche del prodotto

1. Interamente prodotto da AirTAC;
2. Cilindro installabile in diverse posizioni, pratico e facile da installare ed utilizzare;
3. Possibilità di montaggio in serie per risparmiare spazio d'installazione;
4. Elevata precisione di guida dello stelo; lubrificazione aggiuntiva non necessaria;
5. Ampia gamma di cilindri disponibili;
6. Disponibili con guarnizioni resistenti alle alte temperature, ideali per operare fino a 150°C.

Specifiche

Dimensione alesaggio(mm)	6	10	16	20	25	32
Tipo di azione	MD, MDD, MDJ		Doppio effetto			
	MSD, MTD		Semplice effetto			
Fluido	Aria(filtrata a 40µm)					
Pressione di esercizio	Doppio effetto		0.1~1.0MPa(14~145psi)			
	Semplice effetto		0.2~1.0MPa(28~145psi)			
Pressione di prova	1.5MPa(215psi)					
Temperatura °C	-20~80					
Velocità di esercizio mm/s	Doppio effetto: 30~500			Semplice effetto: 50~500		
Tolleranza corsa mm	+1.0 0					
Tipo di ammortizzo	Ammortizzo					
Dimensione porta ①	M5 x 0.8					1/8"

① Disponibile con filettatura G;

Nota: Per i sensori fine corsa fare riferimento alle pagine 351~372.

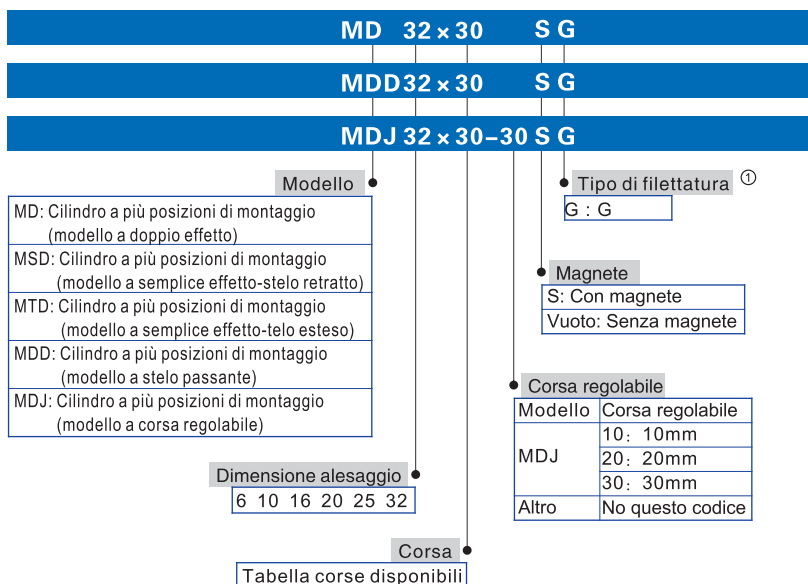
Corsa

Dimensione alesaggio (mm)		Standard corsa (mm)						Massimo. corsa	Disponibile corsa fino a			
6	Doppio effetto	5	10	15	20	25	30	35	35	40		
	Semplice effetto	5	10	15	20				20	-		
10	Doppio effetto	5	10	15	20	25	30	35	35	40		
	Semplice effetto	5	10	15	20				20	-		
16	Doppio effetto	5	10	15	20	25	30	40	50	50	70	
	Semplice effetto	5	10	15	20				20	-		
20	Doppio effetto	5	10	15	20	25	30	40	50	60	60	80
	Semplice effetto	5	10	15	20				20	-		
25	Doppio effetto	5	10	15	20	25	30	40	50	60	60	80
	Semplice effetto	5	10	15	20				20	-		
32	Doppio effetto	5	10	15	20	25	30	40	50	60	60	80
	Semplice effetto	5	10	15	20				20	-		

Nota: 1. Se la corsa richiesta è superiore alla lunghezza massima prevista per quel diametro, deve essere considerata come non-standard. Per le corse speciali contattare l'azienda.

2. Corse speciali fino a 100mm vengono ottenute partendo da corse standard superiori. Le dimensioni esterne saranno identiche a i cilindri di corsa standard superiore. Ad esempio: un cilindro corsa 23 verrà ottenuto da un cilindro di corsa 25: forma e dimensioni esterne sono identiche.

Codice di Ordinazione



① Se la filettatura è di tipo M5, questa posizione del codice è vuota.

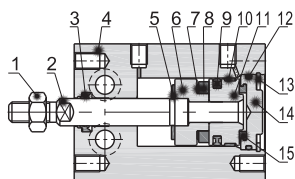


Cilindro a più posizioni di montaggio

Serie MD

Struttura interna e materiale delle parti principali

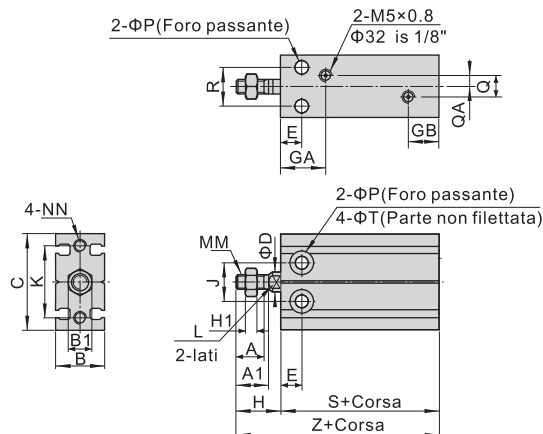
MD-S



Nr. Voce	Materiale	
1	Dado stelo	Acciaio al carbonio
2	Stelo pistone	Acciaio inossidabile
3	Guarnizione pistone	NBR
4	Corpo	Lega di alluminio
5	Ammortizzo	TPU
6	Supporto magnete	Lega di alluminio
7	Rondella magnete	NBR
8	Magnete	Metallo sinterizzato
9	O-ring pistone	NBR
10	Guarnizione	Materiale resistente all'usura
11	Pistone	Lega di alluminio
12	O-ring	NBR
13	Clip C	Acciaio armonico
14	Testata posteriore	Lega di alluminio
15	Ammortizzo	TPU

Dimensioni

MD



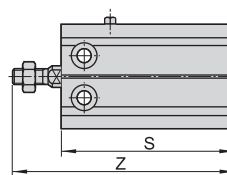
Stelo\Voce	A	A1	B	B1	C	D	E	GA	GB	H	H1	J	K	L
6	7	8	16.5	5.5	22	3	7	14	10	13	2.4	10	17	-
10	10	11	16.5	7	24	4	7	15.5	10	16	2.2	11	18	-
16	11	12.5	20	8	32	6	7	14.5	10	16	4	14	25	5
20	12	14	26	10	40	8	9	19	11	19	5	16	30	6
25	15.5	18	32	12	50	10	10	21.5	8.5	23	6	20	38	8
32	19.5	22	40	17	62	12	11	23	12.5	27	6	24	48	10

Stelo\Voce	MM	NN	P	Q	QA	R	T	Senza magnete				Con magnete			
								S	Z	S	Z	S	Z	S	Z
6	M3 x 0.5	M3 x 0.5 dp:5	3.2	-	-	7	6 dp:5	33	46	33	46				
10	M4 x 0.7	M3 x 0.5 dp:5	3.2	-	-	9	6 dp:5.6	36	52	36	52				
16	M5 x 0.8	M4 x 0.7 dp:5	4.5	3	1.5	12	7.6 dp:6.5	30	46	40	56				
20	M6 x 1.0	M5 x 0.8 dp:7.5	5.5	5	4.5	16	9.3 dp:8	36	55	46	65				
25	M8 x 1.25	M5 x 0.8 dp:8	5.5	12	6	20	9.3 dp:9	40	63	50	73				
32	M10 x 1.25	M6 x 1.0 dp:9	6.6	13	4.5	24	11 dp:11.5	42	69	52	79				

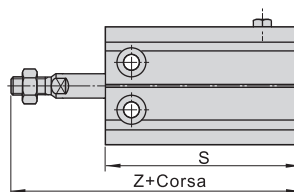


MD/MK

MSD



MTD



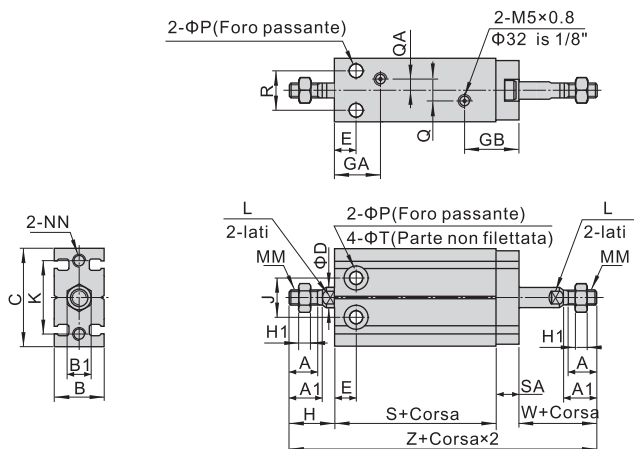
Voce	S (Senza magnete)				S (Con magnete)				Z (Senza magnete)				Z (Con magnete)			
	5St	10St	15St	20St	5St	10St	15St	20St	5St	10St	15St	20St	5St	10St	15St	20St
6	43	48	58	63	43	48	58	63	56	61	71	76	56	61	71	76
10	46	51	61	66	46	51	61	66	62	67	77	82	62	67	77	82
16	45	50	65	70	55	60	75	80	61	66	81	86	71	76	91	96
20	51	56	71	76	61	66	81	86	70	75	90	95	80	85	100	105
25	55	60	75	80	65	70	85	90	78	83	98	103	88	93	108	113
32	57	62	77	82	67	72	87	92	84	89	104	109	94	99	114	119

Nota: Le dimensioni non riportate in tabella sono identiche a quelle del modello MD standard.

Cilindro a più posizioni di montaggio

Serie MD

MDD

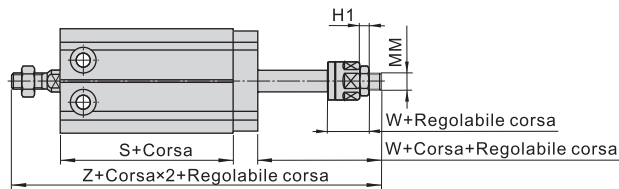


Stelo\Voce	A	A1	B	B1	C	D	E	GA	GB	H	H1	J	K	L	P	Q
6	7	8	16.5	5.5	22	3	7	14	16	13	2.4	10	17	-	3.2	-
10	10	11	16.5	7	24	4	7	15.5	16	16	2.4	11	18	-	3.2	-
16	11	12.5	20	8	32	6	7	14.5	17.5	16	4	14	25	5	4.5	3
20	12	14	26	10	40	8	9	19	20	19	5	16	30	6	5.5	9
25	15.5	18	32	12	50	10	10	21.5	17.5	23	6	20	38	8	5.5	12
32	19.5	22	40	17	62	12	11	23	22.5	27	6	24	48	10	6.6	13

Stelo\Voce	MM	NN	QA	R	SA	T	W	Senza magnete		Con magnete	
								S	Z	S	Z
6	M3 x 0.5	M3 x 0.5 dp:5	-	7	6	6 dp:5	13	38	70	38	70
10	M4 x 0.7	M3 x 0.5 dp:5	-	9	6	6 dp:5.6	16	36	74	36	74
16	M5 x 0.8	M4 x 0.7 dp:5	1.5	12	7.5	7.6 dp:6.5	16	30	69.5	40	79.5
20	M6 x 1.0	M5 x 0.8 dp:7.5	4.5	16	9	9.3 dp:8	19	36	83	46	93
25	M8 x 1.25	M5 x 0.8 dp:8	6	20	9	9.3 dp:9	23	40	95	50	105
32	M10 x 1.25	M6 x 1.0 dp:9	4.5	24	10	11 dp:11.5	27	42	106	52	116

MD/MK

MDJ



Stelo\Voce	MM	H1	W	Senza magnete		Con magnete	
				S	Z	S	Z
6	M3 x 0.5	2.4	13	38	70	38	70
10	M4 x 0.7	2.2	14.7	36	72.7	36	72.7
16	M5 x 0.8	4	17	30	70.5	40	80.5
20	M6 x 1.0	5	21	36	85	46	95
25	M8 x 1.25	6	25	40	97	50	107
32	M10 x 1.25	6	27	42	106	52	116

Nota: Le dimensioni non riportate in tabella sono identiche a quelle del modello MD standard.

Floating Joint

Table for floating joint and cylinder

Cylinder Accessory	SE						SI									
	32	40	50	63	80	100	125	32	40	50	63	80	100	125	160	200
F-M10125F	•							•								
F-M12125F		•							•							
F-M16150F			•	•						•	•					
F-M20150F					•	•						•	•			

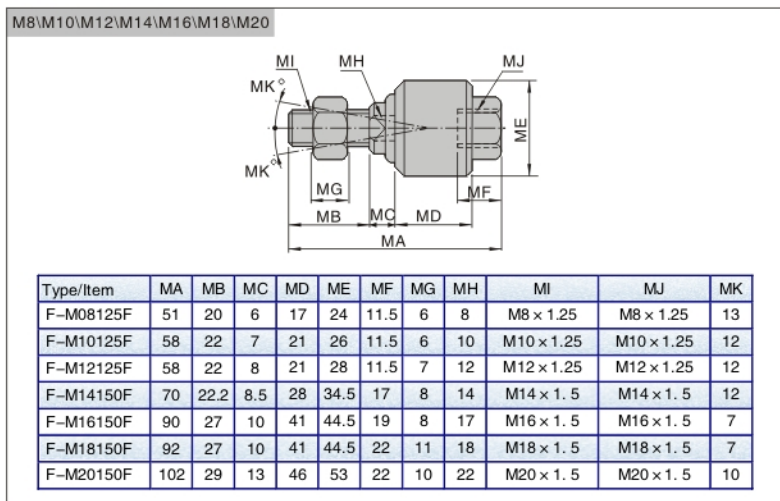
Cylinder Accessory	SGC				SC						JSI						
	125	160	200	250	32	40	50	63	80	100	32	40	50	63	80	100	125
F-M10125F					•						•						
F-M12125F						•						•					
F-M14150F													•				
F-M16150F							•	•						•	•		
F-M18150F															•	•	
F-M20150F										•	•						

Cylinder Accessory	ACP								ACQ												
	12	16	20	25	32	40	50	63	80	100	12	16	20	25	32	40	50	63	80	100	
F-M08125F		•											•								
F-M10125F			•	•	•	•								•							
F-M12125F						•	•														
F-M14150F															•	•					
F-M16150F									•											•	•
F-M18150F																				•	•
F-M20150F										•											

Cylinder Accessory	MA				MAL				MF							
	16	20	25	32	40	50	63	80	20	25	32	40	20	25	32	40
F-M06100F	•															
F-M08125F		•														•
F-M10125F			•	•						•	•			•	•	•
F-M12125F						•						•				
F-M14150F							•	•								•

Cylinder Accessory	PB				MI								
	4	6	10	12	16	8	10	12	16	20	25	32	40
F-M03050F		•											
F-M04070F			•			•	•						
F-M05080F				•	•								
F-M06100F									•	•			
F-M08125F										•			
F-M10125F											•	•	
F-M12125F													•

Dimensions



Ordering code

F — M10 125 F

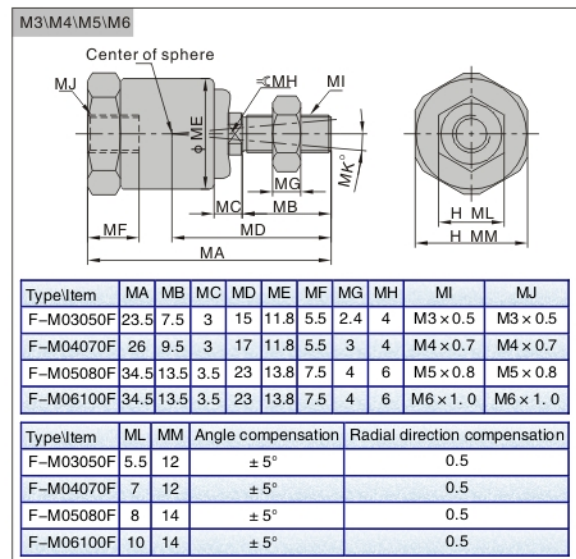
Accessories code: F — Floating Joint

Screw thread:

M3	M3
M4	M4
M5	M5
M6	M6
M8	M8
M10	M10
M12	M12
M14	M14
M16	M16
M18	M18
M20	M20

Thread pitch:

050	0.5mm
070	0.7mm
080	0.8mm
100	1.0mm
125	1.25mm
150	1.5mm



I Knuckle

Table for I knuckle and cylinder

Cylinder Accessory	SE						SI									
	32	40	50	63	80	100	125	32	40	50	63	80	100	125	160	200
F-M10125II	●							●								
F-M12125II		●							●							
F-M16150II			●	●						●	●					
F-M20150II					●	●						●	●			
F-M27200II							●							●		
F-M36200II															●	●

Cylinder Accessory	SGC				SC					
	125	160	200	250	32	40	50	63	80	100
F-M10125II					●					
F-M12125II						●				
F-M16150II							●	●		
F-M20150II									●	●
F-M27200II	●									
F-M36200II		●	●							
F-M42200II				●						

Cylinder Accessory	MA						MAL				MI								
	16	20	25	32	40	50	63	20	25	32	40	8	10	12	16	20	25	32	40
F-M04070II												●	●						
F-M06100II	●													●	●				
F-M08125II		●						●								●			
F-M10125II			●	●					●	●							●	●	
F-M12125II																			●
F-M12125IA					●						●								
F-M14150J						●	●												

Cylinder Accessory	ACQ									
	12	16	20	25	32	40	50	63	80	100
F-M05080IQ	●									
F-M06100IQ		●								
F-M08125IQ			●							
F-M10125IQ				●						
F-M14150IQ					●	●				
F-M18150IQ							●	●		
F-M22150IQ									●	
F-M26150IQ										●

Cylinder Accessory	JSI						
	32	40	50	63	80	100	125
F-M10125J	●						
F-M14150J		●					
F-M18150J			●	●			
F-M22150J					●		
F-M26150J						●	
F-M27200J							●

Cylinder Accessory	MF			
	20	25	32	40
F-M08125IF	●			
F-M10125IF		●	●	
F-M14150IF				●

Cylinder Accessory	PB				
	4	6	10	12	16
F-M04070IB			●		
F-M05080IB				●	●



Ordering code

F — M16 150 I I

Accessories code: F — M16 150 I I

Knuckle: I I Knuckle

Screw thread: M16 M16

Thread pitch: 150 1.5mm

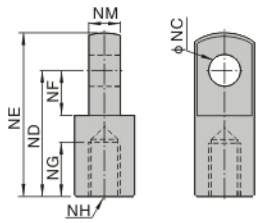
Code: I ISO standard type

Screw thread	Thread pitch	Code
M04 M4	070 0.7mm	I ISO standard type
M05 M5	080 0.8mm	J JSI series
M06 M6	100 1.0mm	Q ACQ series
M08 M8	125 1.25mm	A MA series
M10 M10		B PB series
M12 M12		F MF series
M14 M14	150 1.5mm	
M16 M16		
M18 M18		
M20 M20		
M22 M22		
M26 M26		
M27 M27	200 2.0mm	
M36 M36		
M42 M42		

I Knuckle

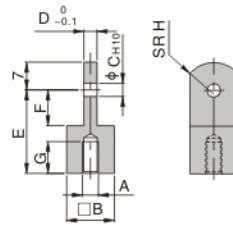
■ Dimensions

ISO standard type



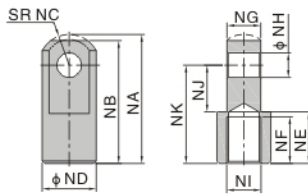
Type/Item	NC	ND	NE	NF	NG	NH	NM
F-M04070II	4	16	21	6.8	8	M4X0.7	3.9
F-M06100II	5	21	28	8.5	8	M6 × 1.0	6
F-M08125II	8	30	40	11	15	M8 × 1.25	8
F-M10125II	10	40	50	15	20	M10 × 1.25	10
F-M12125II	12	48	62	24	20	M12 × 1.25	12
F-M16150II	16	64	82	32	23	M16 × 1.5	16
F-M20150II	20	80	102	40	30	M20 × 1.5	20
F-M27200II	30	110	139	51	45	M27 × 2.0	30
F-M36200II	35	144	181	65	55	M36 × 2.0	35
F-M42200II	40	168	211	85	62	M42X2.0	40

PB Series



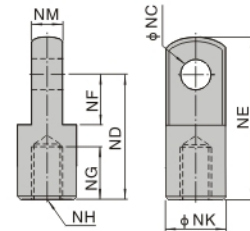
Type/Item	A	B	C	D	E	F	G	H
F-M04070IB	M4 × 0.7	12	3.3	3	21	9.1	7.5	8
F-M05080IB	M5 × 0.8	12	5	6.3	25	14.1	7.5	12

JSI Series



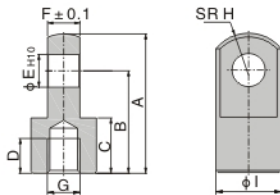
Type/Item	NA	NB	NC	ND	NE	NF	NG	NH	NJ	NK	NI
F-M10125J	42	40	12	20	17	14	13.8	10	16	30	M10 × 1.25
F-M14150J	52.5	50	12.5	22	21	19	13.8	10	19	40	M14 × 1.5
F-M18150J	66.5	64	16.5	28	27	24	19.8	14	24	50	M18 × 1.5
F-M22150J	83.5	80	23.5	40	29	26	29.8	22	34	60	M22 × 1.5
F-M26150J	83.5	80	23.5	40	29	26	29.8	22	34	60	M26 × 1.5
F-M27200J	120.5	119	28.5	45	40	36	31.8	25	34	92	M27 × 2.0

MA Series



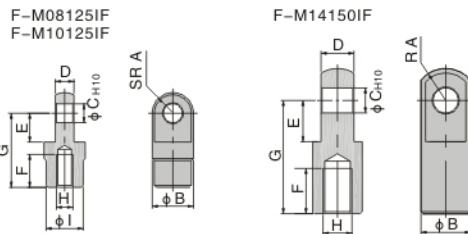
Type/Item	NC	ND	NE	NF	NG	NH	NK	NM
F-M12125IA	10	45	57	16.5	23	M12 × 1.25	24	14

ACQ Series



Type/Item	A	B	C	D	E	F	G	H	I
F-M05080IQ	21.5	16	9	6	5	4.7	M5x0.8	6.3	10
F-M06100IQ	32	25	11	8	5	6.2	M6x1.0	8.1	12
F-M08125IQ	34	25	13.5	8.5	8	7.7	M8x1.25	10.3	16
F-M10125IQ	41	30	16	11	10	9.7	M10x1.25	12.8	20
F-M14150IQ	42	30	16	14	10	17.6	M14x1.5	12	22
F-M18150IQ	56	40	20	18	14	21.6	M18x1.5	16	28
F-M22150IQ	71	50	23	21	18	27.6	M22x1.5	21	38
F-M26150IQ	79	55	24	22	22	31.6	M26x1.5	24	44

MF Series



Type/Item	A	B	C	D	E	F	G	H	I
F-M08125IF	9.5	20	9	9	14	16	36	M8 × 1.25	18
F-M10125IF	9.5	20	9	9	14	18	38	M10 × 1.25	18
F-M14150IF	15	24	12	16	20	22	55	M14 × 1.5	-



Universal Joint



Table for universal joint and cylinder

Cylinder Accessory	SE						SI									
	32	40	50	63	80	100	125	32	40	50	63	80	100	125	160	200
F-M10125U	•							•								
F-M12125U		•							•							
F-M16150U			•	•						•	•					
F-M20150U					•	•						•	•			
F-M27200U							•							•		
F-M36200U															•	•

Cylinder Accessory	SGC				SC				JSI								
	125	160	200	250	32	40	50	63	80	100	32	40	50	63	80	100	125
F-M10125U					•							•					
F-M12125U						•											
F-M14150U													•				
F-M16150U							•	•									
F-M18150U														•	•		
F-M20150U									•	•							
F-M27200U	•																•
F-M36200U		•	•														

Cylinder Accessory	MI				PB		MF		MA								
	8	10	12, 16	20	25, 32	40	10	12, 16	20	25, 32	40	16	20	25, 32	40	50, 63	
F-M04070U	•	•															
F-M05080U								•									
F-M06100U			•										•				
F-M08125U				•						•				•			
F-M10125U					•						•				•		
F-M12125U						•										•	
F-M14150U																	•

Cylinder Accessory	MAL				ACQ						ACP										
	20	25	32	40	12	16	20	25	32	40	50	63	12	16	20-40	50	63	80	100		
F-M05080U					•																
F-M06100U						•									•						
F-M08125U	•						•									•					
F-M10125U		•	•					•									•				
F-M12125U				•														•	•		
F-M14150U									•	•											
F-M16150U																				•	
F-M18150U																					•
F-M20150U																					•

Ordering code

F — M10 125 U

Accessories code: F, M10, 125, U

Code: U Universal Joint

Screw thread	
M04	M4
M05	M5
M06	M6
M08	M8
M10	M10
M12	M12
M14	M14
M16	M16
M18	M18
M20	M20
M27	M27
M36	M36

Thread pitch	
070	0.7mm
080	0.8mm
100	1.0mm
125	1.25mm
150	1.5mm
200	2.0mm

Dimensions

M8 and below

M10 and above

Type/Item	PA	PB	PC(H9)	PD	PE	PF	PG	PH	PI	PJ	PK
F-M04070U	6	18	4	10	27	36	M4 × 0.7	13	12.5	10	8
F-M05080U	6	18	5	10	27	36	M5 × 0.8	13	12.5	10	8
F-M06100U	6.8	20	6	12	30	40	M6 × 1.0	13	13	11	9
F-M08125U	9	24	8	16	36	48	M8 × 1.25	13	16	14	12
F-M10125U	11	26	10	20	43	56	M10 × 1.25	13	19	17	14
F-M12125U	12	32	12	22	50	66	M12 × 1.25	13	22	19	16
F-M14150U	14	36	14	28	57	75	M14 × 1.5	13	25	22	19
F-M16150U	15	40	16	28	64	84	M16 × 1.5	15	27	22	21
F-M18150U	16.5	46	18	30	71	94	M18 × 1.5	15	31	27	23
F-M20150U	18	46	20	33	77	100	M20 × 1.5	15	34	30	25
F-M27200U	24	66	28	51	103	136	M27 × 2.0	15	46	41	35
F-M36200U	27.5	80	35	56	125	165	M36 × 2.0	15	57.5	50	43



Y Knuckle

Table for Y knuckle and cylinder

Cylinder Accessory	SE						SI									
	32	40	50	63	80	100	125	32	40	50	63	80	100	125	160	200
F-M10125YI	●							●								
F-M12125YI		●							●							
F-M16150YI			●	●						●	●					
F-M20150YI					●	●						●	●			
F-M27200YI														●		
F-M36200YI															●	●

Cylinder Accessory	SGC				SC					
	125	160	200	250	32	40	50	63	80	100
F-M10125YI					●					
F-M12125YI						●				
F-M16150YI							●	●		
F-M20150YI									●	●
F-M27200YI	●									
F-M36200YI		●	●							
F-M42200YI				●						

Cylinder Accessory	MA				MAL						
	16	20	25	32	40	50	63	20	25	32	40
F-M06100YI	●							●			
F-M08125YI		●							●		
F-M10125YI			●	●					●	●	
F-M12125YA					●						●
F-M14150YJ						●	●				

Cylinder Accessory	ACQ									
	12	16	20	25	32	40	50	63	80	100
F-M05080YQ	●									
F-M06100YQ		●								
F-M08125YQ			●							
F-M10125YQ				●						
F-M14150YQ					●	●				
F-M18150YQ							●	●		
F-M22150YQ									●	
F-M26150YQ										●

Cylinder Accessory	MI							
	8	10	12	16	20	25	32	40
F-M04070YE	●	●						
F-M06100YE			●	●				
F-M08125YE					●			
F-M10125YE						●	●	
F-M12125YI								●

Cylinder Accessory	JSI						
	32	40	50	63	80	100	125
F-M10125YJ	●						
F-M14150YJ		●					
F-M18150YJ			●	●			
F-M22150YJ					●		
F-M26150YJ						●	
F-M27200YJ							●

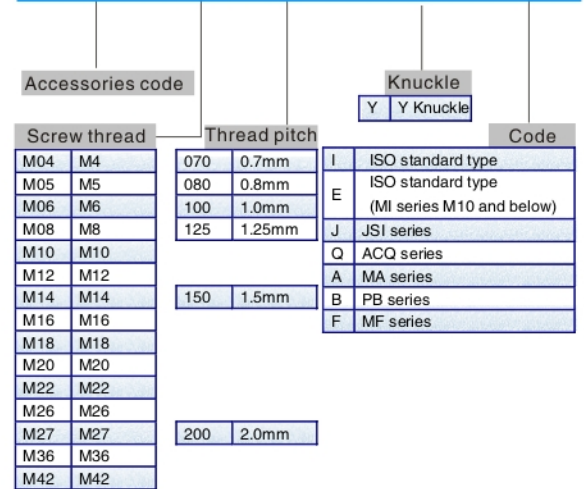
Cylinder Accessory	MF			
	20	25	32	40
F-M08125YF	●			
F-M10125YF		●	●	
F-M14150YF				●

Cylinder Accessory	PB				
	4	6	10	12	16
F-M04070YB			●		
F-M05080YB				●	●



Ordering code

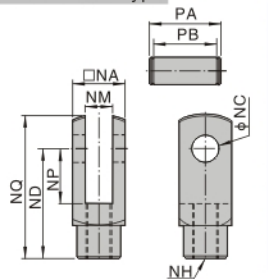
F — M16 150 Y I



Y Knuckle

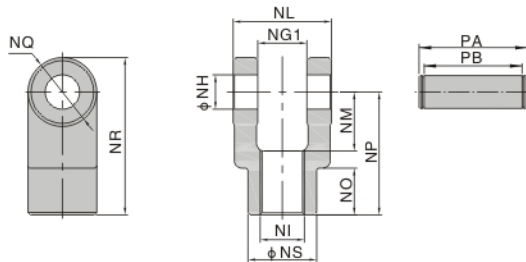
■ Dimensions

ISO standard type



Type\Item	NA	NC	ND	NP	NQ	NM	NH	PA	PB
F-M06100YI	12	5	21	14	28	6	M6 × 1.0	17.2	12.5
F-M08125YI	16	8	30	15	40	8	M8 × 1.25	21.6	16.5
F-M10125YI	19	10	40	20	52	10	M10 × 1.25	25.6	20
F-M12125YI	25.4	12	48	24	62	12	M12 × 1.25	32.4	26.2
F-M16150YI	32	16	64	32	80	16	M16 × 1.5	39	33
F-M20150YI	44.4	20	80	40	102	20	M20 × 1.5	53.4	45
F-M27200YI	54	30	110	55	139	30	M27 × 2.0	64.2	55
F-M36200YI	70	35	144	73	179	35	M36 × 2.0	80.2	71
F-M42200YI	85	40	168	86	211	40.3	M42 × 2.0	115	93

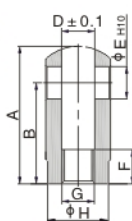
JSI Series



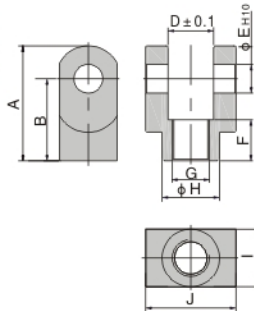
Type\Item	NG1	NH	NI	NL	NM	NO	NP	NQ	NR	NS	PA	PB
F-M10125YJ	14.2	10	M10 × 1.25	27.8	16	10	30	20	40	20	34.6	28.8
F-M14150YJ	14.2	10	M14 × 1.5	27.8	19	17	40	22	51	22	34.6	28.8
F-M18150YJ	20.2	14	M18 × 1.5	39.8	24	19	50	28	64	28	47	40.8
F-M22150YJ	30.2	22	M22 × 1.5	59.8	34	20	65	40	85	40	69.2	60.8
F-M26150YJ	30.2	22	M26 × 1.5	59.8	34	20	65	40	85	40	69.2	60.8
F-M27200YJ	32.2	25	M27 × 2.0	63.8	42	47	100	54	127	46	73.2	64.8

ACQ Series

F-M05080YQ
F-M06100YQ
F-M08125YQ
F-M10125YQ

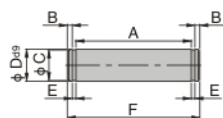


F-M14150YQ
F-M18150YQ
F-M22150YQ
F-M26150YQ



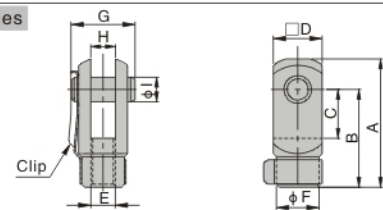
Type\Item	A	B	D	E	F	G	H	I	J
F-M05080YQ	22	16	5.3	5	6	M5 × 0.8	9	10	-
F-M06100YQ	28	21	6.6	5	11	M6 × 1.0	11	12	-
F-M08125YQ	34	25	8.3	8	8.5	M8 × 1.25	15	16	-
F-M10125YQ	41	30	10.3	10	10.5	M10 × 1.25	19	20	-
F-M14150YQ	42	30	18.4	10	16	M14 × 1.5	22	22	36
F-M18150YQ	56	40	22.4	14	20	M18 × 1.5	28	28	44
F-M22150YQ	71	50	28.4	18	23	M22 × 1.5	38	38	56
F-M26150YQ	79	55	32.4	22	24	M26 × 1.5	44	44	64

PIN



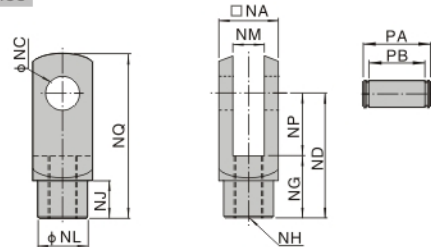
Type\Item	F-05080YQ	F-06100YQ	F-08125YQ	F-10125YQ	F-14150YQ	F-18150YQ	F-22150YQ	F-26150YQ
A	10.2	12.2	16.2	20.2	36.2	44.2	56.2	64.2
B	1.5	1.5	1.5	2	2	2	2	2.5
C	3	3	6	8	8	12	15	19
D	5	5	8	10	10	14	18	22
E	0.7	0.7	0.9	1.1	1.1	1.1	1.7	1.7
F	14.6	16.6	21	26.4	42.4	50.4	63.6	72.6

PB Series



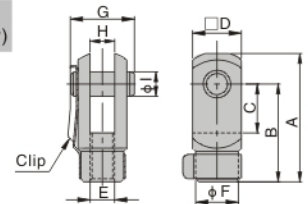
Type\Item	A	B	C	D	E	F	G	H	I
F-M04070YB	28	21	10.2	12	M4 × 0.7	10	15.5	3.2	3.3
F-M05080YB	28	21	10.2	12	M5 × 0.8	10	15.5	6.5	5

MA Series



Type\Item	NA	NC	ND	NG	NH	NJ	NL	NM	NN	NP	NQ	PA	PB
F-M12125YA	25.4	10	45	25	M12 × 1.25	15	23	14	10	20	57	32	26.2

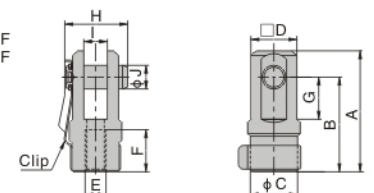
ISO standard type (MI series M10 and below)



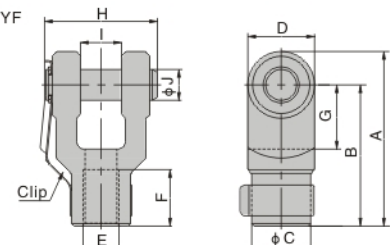
Type\Item	A	B	C	D	E	F	G	H	I
F-M04070YE	22	16	8	8	M4 × 0.7	7	11.5	4	4
F-M06100YE	32	24	12	12	M6 × 1.0	10	16	6	6
F-M08125YE	42	32	16	16	M8 × 1.25	14	21	8	8
F-M10125YE	52	40	20	19	M10 × 1.25	18	25	10	10

MF Series

F-M08125YF
F-M10125YF



F-M14150YF



Type\Item	A	B	C	D	E	F	G	H	I	J
F-M08125YF	46	36	18	17.5	M8 × 1.25	16	16	24	9	9
F-M10125YF	48	38	18	17.5	M10 × 1.25	18	16	24	9	9
F-M14150YF	68	55	23	26	M14 × 1.5	22	25	44	16	12