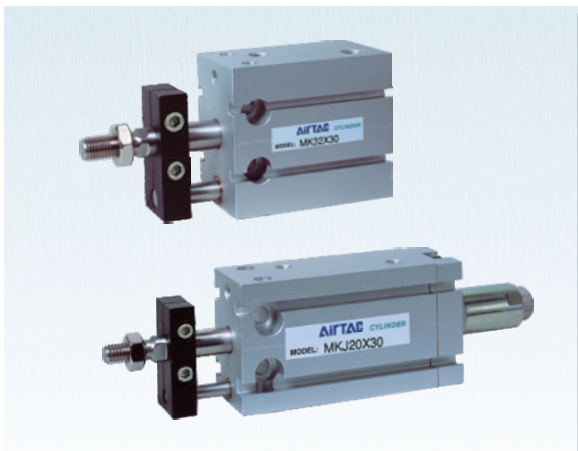
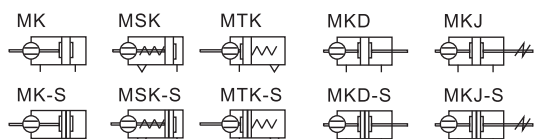


# Cilindro a più posizioni di montaggio

## Serie MK



### Simbolo



### Caratteristiche del prodotto

1. Interamente prodotto da AirTAC;
2. Cilindro installabile in diverse posizioni, pratico e facile da installare ed utilizzare;
3. Possibilità di montaggio in serie per risparmiare spazio d'installazione;
4. Elevata precisione di guida dello stelo; lubrificazione aggiuntiva non necessaria;
5. La guida installata previene la rotazione del pistone;
6. Ampia gamma di cilindri disponibili;
7. Disponibili con guarnizioni resistenti alle alte temperature, ideali per operare fino a 150°C.

### Specifiche

Dimensione alesaggio(mm)	6	10	16	20	25	32
Tipo di azione	MK, MKD, MKJ		Doppio effetto			
	MSK, MTK		Semplice effetto			
Fluido	Aria(filtrata a 40µm)					
Pressione di esercizio	Doppio effetto		0.1~1.0MPa(14~145psi)			
	Semplice effetto		0.2~1.0MPa(28~145psi)			
Pressione di prova	1.5MPa(215psi)					
Temperatura °C	-20~80					
Velocità di esercizio mm/s	Doppio effetto: 30~500			Semplice effetto: 50~500		
Tolleranza corsa mm	+1,0 0					
Tipo di ammortizzo	Ammortizzo					
Dimensione porta ⊙	M5 x 0.8					1/8"

⊙ Disponibile con filettatura G;

Nota: Per i sensori fine corsa fare riferimento alle pagine 351~372.

### Corsa

Dimensione alesaggio (mm)		Standard corsa (mm)						Massimo. corsa	Disponibile corsa fino a			
6	Doppio effetto	5	10	15	20	25	30	35	35	40		
	Semplice effetto	5	10	15	20				20	-		
10	Doppio effetto	5	10	15	20	25	30	35	35	40		
	Semplice effetto	5	10	15	20				20	-		
16	Doppio effetto	5	10	15	20	25	30	40	50	50	70	
	Semplice effetto	5	10	15	20				20	-		
20	Doppio effetto	5	10	15	20	25	30	40	50	60	60	80
	Semplice effetto	5	10	15	20				20	-		
25	Doppio effetto	5	10	15	20	25	30	40	50	60	60	80
	Semplice effetto	5	10	15	20				20	-		
32	Doppio effetto	5	10	15	20	25	30	40	50	60	60	80
	Semplice effetto	5	10	15	20				20	-		

Nota: 1. Se la corsa richiesta è superiore alla lunghezza massima prevista per quel diametro, deve essere considerata come non-standard. Per le corse speciali contattare l'azienda.

2. Corse speciali fino a 100mm vengono ottenute partendo da corse standard superiori. Le dimensioni esterne saranno identiche a i cilindri di corsa standard superiore. Ad esempio: un cilindro corsa 23 verrà ottenuto da un cilindro di corsa 25: forma e dimensioni esterne sono identiche.

### Codice di Ordinazione

MK 32 x 30 S G	
MKD 32 x 30 S G	
MKJ 32 x 30-30 S G	

**Modello**

- MK: Cilindro a più posizioni di montaggio (modello a doppio effetto)
- MSK: Cilindro a più posizioni di montaggio (modello a semplice effetto-stelo retratto)
- MTK: Cilindro a più posizioni di montaggio (modello a semplice effetto-telo esteso)
- MKD: Cilindro a più posizioni di montaggio (modello a stelo passante)
- MKJ: Cilindro a più posizioni di montaggio (modello a corsa regolabile)

**Tipo di filettatura** ⊙

G : G

**Magnete**

S: Con magnete  
Vuoto: Senza magnete

**Corsa regolabile**

Modello	Corsa regolabile
MKJ	10: 10mm 20: 20mm 30: 30mm
Altro	No questo codice

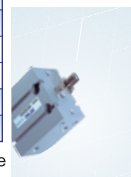
**Dimensione alesaggio**

6 10 16 20 25 32

**Corsa**

Tabella corse disponibili

⊙ Se la filettatura è di tipo M5, questa posizione del codice è vuota.



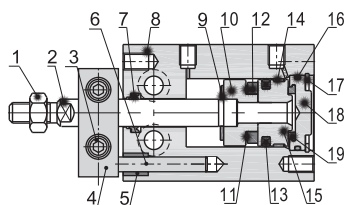
MD/MK

# Cilindro a più posizioni di montaggio

## Serie MK

### Struttura interna e materiale delle parti principali

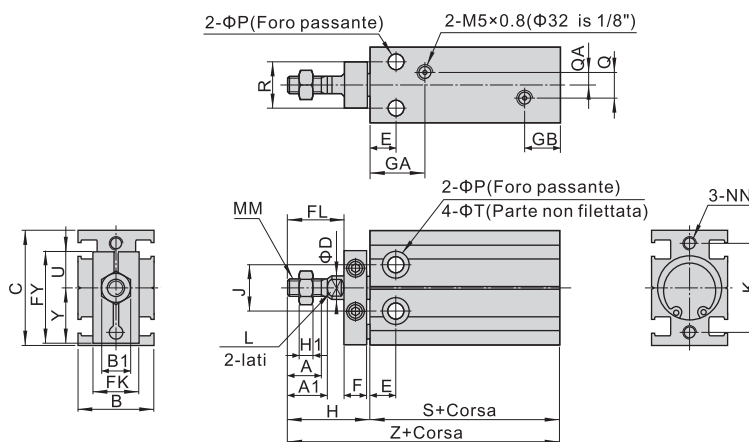
MK-S



Nr. Voce		Materiale
1	Dado stelo	Acciaio al carbonio
2	Stelo pistone	Acciaio inossidabile
3	Vite	Acciaio al carbonio
4	Piastra anti-rotazione	Lega di alluminio
5	Boccola	Ottone
6	Guida fissa	Acciaio inossidabile
7	Guarnizione pistone	NBR
8	Corpo	Lega di alluminio
9	Ammortizzo	TPU
10	Supporto magnete	Lega di alluminio
11	Rondella magnete	NBR
12	Magnete	Metallo sinterizzato
13	O-ring pistone	NBR
14	Guarnizione	Materiale resistente all'usura
15	Pistone	Lega di alluminio
16	O-ring	NBR
17	Clip C	Acciaio armonico
18	Testata posteriore	Lega di alluminio
19	Ammortizzo	TPU

### Dimensioni

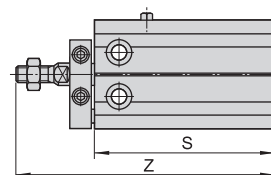
MK



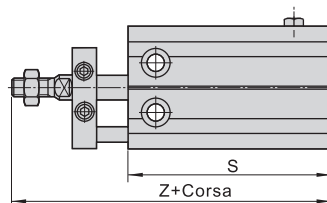
Stelo\Voce	A	A1	B	B1	C	D	E	F	FL	FK	FY	GA	GB	H	H1	J	K	L	Y
6	7	8	16.5	5.5	22	3	7	8	9	11	19	14	10	18	2.4	10	17	-	10.9
10	10	11	16.5	7	24	4	7	8	12	13	20.5	15.5	10	21	2.2	11	18	-	11.9
16	11	12.5	20	8	32	6	7	8	17	13	26.5	14.5	10	26	4	14	25	5	15.9
20	12	14	26	10	40	8	9	8	20	16	32	19	11	29	5	16	30	6	19.8
25	15.5	18	32	12	50	10	10	10	22	19	40	21.5	8.5	33	6	20	38	8	24.8
32	19.5	22	40	17	62	12	11	12	29	24	49	23	12.5	42	6	24	48	10	30.8

Stelo\Voce	MM	NN	P	Q	QA	R	T	U	Senza magnete		Con magnete	
									S	Z	S	Z
6	M3 × 0.5	M3 × 0.5 dp:5	3.2	-	-	7	6 dp:5	8.1	33	51	33	51
10	M4 × 0.7	M3 × 0.5 dp:5	3.2	-	-	9	6 dp:5.6	8.6	36	57	36	57
16	M5 × 0.8	M4 × 0.7 dp:5	4.5	3	1.5	12	7.6 dp:6.5	10.6	30	56	40	66
20	M6 × 1.0	M5 × 0.8 dp:7.5	5.5	9	4.5	16	9.3 dp:8	12.2	36	65	46	75
25	M8 × 1.25	M5 × 0.8 dp:8	5.5	12	6	20	9.3 dp:9	15.2	40	73	50	83
32	M10 × 1.25	M6 × 1.0 dp:9	6.6	13	4.5	24	11 dp:11.5	18.2	42	84	52	94

MSK



MTK



Voce	S (Senza magnete)				S (Con magnete)				Z (Senza magnete)				Z (Con magnete)			
	5St	10St	15St	20St	5St	10St	15St	20St	5St	10St	15St	20St	5St	10St	15St	20St
6	43	48	58	63	43	48	58	63	61	66	76	81	61	66	76	81
10	46	51	61	66	46	51	61	66	67	72	82	87	67	72	82	87
16	45	50	65	70	55	60	75	80	71	76	91	96	81	86	101	106
20	51	56	71	76	61	66	81	86	80	85	100	105	90	95	110	115
25	55	60	75	80	65	70	85	90	88	93	108	113	98	103	118	123
32	57	62	77	82	67	72	87	92	99	104	119	124	109	114	129	134

Nota: Le dimensioni non riportate in tabella sono identiche a quelle del modello MD standard.

MD/MK

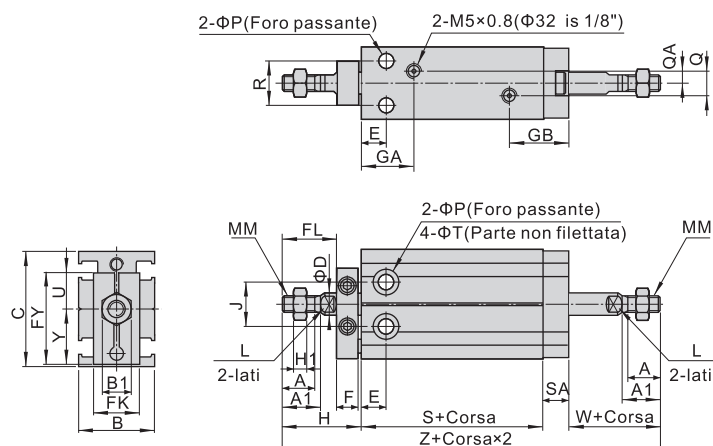


# Cilindro a più posizioni di montaggio

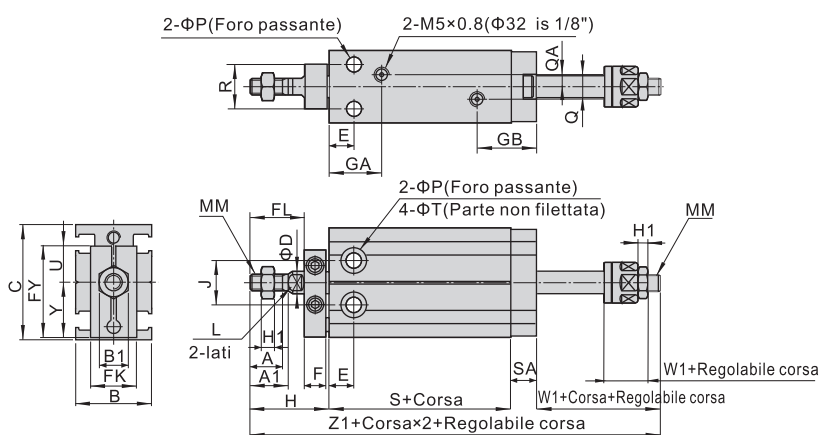


Serie MK

MKD



MKJ



MD/MK

Stelo\Voce	A	A1	B	B1	C	D	E	F	FL	FK	FY	GA	GB	H	H1	J	L	P	Y
6	7	8	16.5	5.5	22	3	7	8	9	11	19	14	16	18	2.4	10	-	3.2	10.9
10	10	11	16.5	7	24	4	7	8	12	13	20.5	15.5	16	21	2.2	11	-	3.2	11.9
16	11	12.5	20	8	32	6	7	8	17	13	26.5	14.5	17.5	26	4	14	5	4.5	15.9
20	12	14	26	10	40	8	9	8	20	16	32	19	20	29	5	16	6	5.5	19.8
25	15.5	18	32	12	50	10	10	10	22	19	40	21.5	17.5	33	6	20	8	5.5	24.8
32	19.5	22	40	17	62	12	11	12	29	24	49	23	22.5	42	6	24	10	6.6	30.8

Stelo\Voce	MM	Q	QA	R	SA	T	U	W	W1	Senza magnete			Con magnete		
										S	Z	Z1	S	Z	Z1
6	M3 x 0.5	-	-	7	6	6 dp:5	8.1	13	13	38	75	75	38	75	75
10	M4 x 0.7	-	-	9	6	6 dp:5.6	8.6	16	14.7	36	79	77.7	36	79	77.7
16	M5 x 0.8	3	1.5	12	7.5	7.6 dp:6.5	10.6	16	17	30	79.5	80.5	40	89.5	90.5
20	M6 x 1.0	9	4.5	16	9	9.3 dp:8	12.2	19	21	36	93	95	46	103	105
25	M8 x 1.25	12	6	20	9	9.3 dp:9	15.2	23	25	40	105	107	50	115	117
32	M10 x 1.25	13	4.5	24	10	11 dp:11.5	18.2	27	27	42	121	121	52	131	131



## Floating Joint

### Table for floating joint and cylinder

Cylinder Accessory	SE						SI									
	32	40	50	63	80	100	125	32	40	50	63	80	100	125	160	200
F-M10125F	●							●								
F-M12125F		●							●							
F-M16150F			●	●						●	●					
F-M20150F					●	●						●	●			

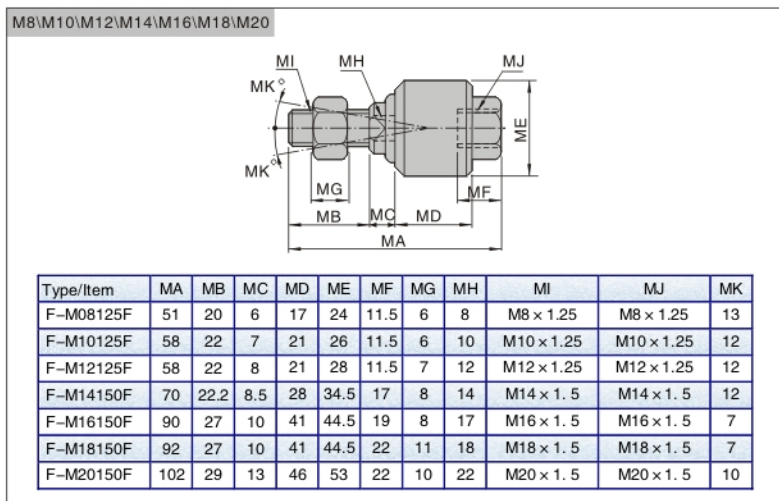
Cylinder Accessory	SGC				SC						JSI						
	125	160	200	250	32	40	50	63	80	100	32	40	50	63	80	100	125
F-M10125F					●						●						
F-M12125F						●						●					
F-M14150F													●				
F-M16150F							●	●						●	●		
F-M18150F															●	●	
F-M20150F										●	●						

Cylinder Accessory	ACP								ACQ												
	12	16	20	25	32	40	50	63	80	100	12	16	20	25	32	40	50	63	80	100	
F-M08125F		●											●								
F-M10125F			●	●	●	●								●							
F-M12125F						●	●														
F-M14150F															●	●					
F-M16150F									●											●	●
F-M18150F																				●	●
F-M20150F										●											

Cylinder Accessory	MA				MAL				MF							
	16	20	25	32	40	50	63	80	20	25	32	40	20	25	32	40
F-M06100F	●															
F-M08125F		●								●					●	
F-M10125F			●	●						●	●				●	●
F-M12125F						●						●				
F-M14150F							●	●								●

Cylinder Accessory	PB				MI								
	4	6	10	12	16	8	10	12	16	20	25	32	40
F-M03050F		●											
F-M04070F			●			●	●						
F-M05080F				●	●								
F-M06100F								●	●				
F-M08125F										●			
F-M10125F											●	●	
F-M12125F													●

### Dimensions



### Ordering code

**F — M10 125 F**

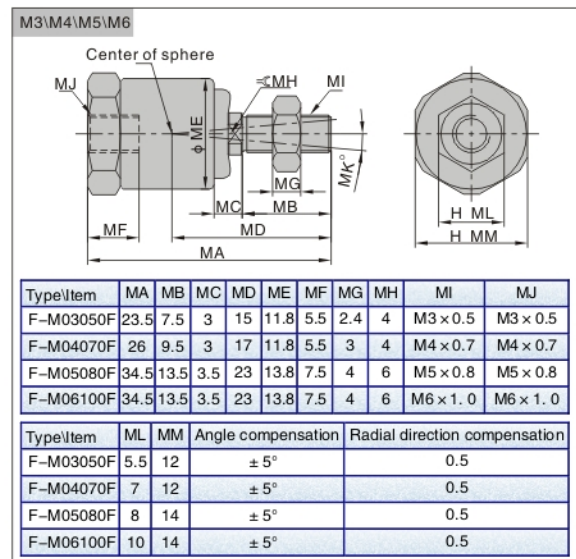
Accessories code: F — Floating Joint

Screw thread:

M3	M3
M4	M4
M5	M5
M6	M6
M8	M8
M10	M10
M12	M12
M14	M14
M16	M16
M18	M18
M20	M20

Thread pitch:

050	0.5mm
070	0.7mm
080	0.8mm
100	1.0mm
125	1.25mm
150	1.5mm



## I Knuckle

### Table for I knuckle and cylinder

Cylinder Accessory	SE						SI									
	32	40	50	63	80	100	125	32	40	50	63	80	100	125	160	200
F-M10125II	●							●								
F-M12125II		●							●							
F-M16150II			●	●						●	●					
F-M20150II					●	●						●	●			
F-M27200II							●							●		
F-M36200II															●	●

Cylinder Accessory	SGC				SC					
	125	160	200	250	32	40	50	63	80	100
F-M10125II					●					
F-M12125II						●				
F-M16150II							●	●		
F-M20150II									●	●
F-M27200II	●									
F-M36200II		●	●							
F-M42200II				●						

Cylinder Accessory	MA						MAL				MI								
	16	20	25	32	40	50	63	20	25	32	40	8	10	12	16	20	25	32	40
F-M04070II												●	●						
F-M06100II	●													●	●				
F-M08125II		●						●								●			
F-M10125II			●	●					●	●							●	●	
F-M12125II																			●
F-M12125IA					●						●								
F-M14150IJ						●	●												

Cylinder Accessory	ACQ									
	12	16	20	25	32	40	50	63	80	100
F-M05080IQ	●									
F-M06100IQ		●								
F-M08125IQ			●							
F-M10125IQ				●						
F-M14150IQ					●	●				
F-M18150IQ							●	●		
F-M22150IQ									●	
F-M26150IQ										●

Cylinder Accessory	JSI						
	32	40	50	63	80	100	125
F-M10125IJ	●						
F-M14150IJ		●					
F-M18150IJ			●	●			
F-M22150IJ					●		
F-M26150IJ						●	
F-M27200IJ							●

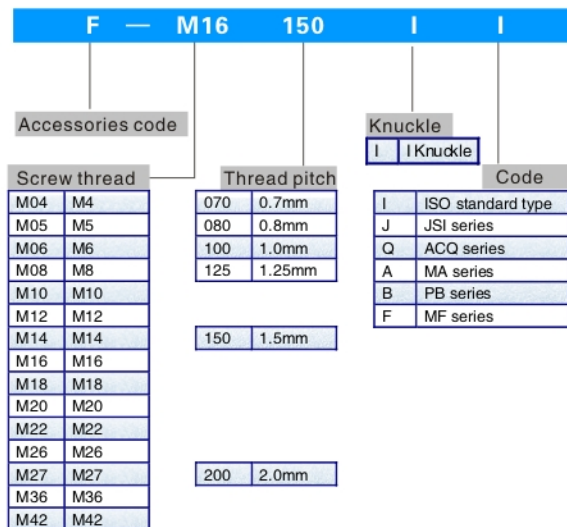
Cylinder Accessory	MF			
	20	25	32	40
F-M08125IF	●			
F-M10125IF		●	●	
F-M14150IF				●

Cylinder Accessory	PB				
	4	6	10	12	16
F-M04070IB			●		
F-M05080IB				●	●



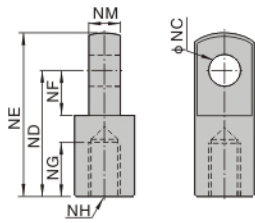
### Ordering code



## I Knuckle

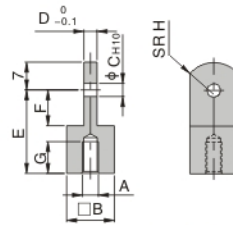
### ■ Dimensions

#### ISO standard type



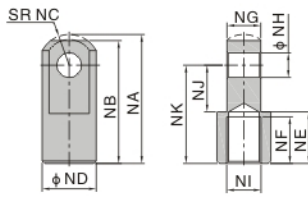
Type/Item	NC	ND	NE	NF	NG	NH	NM
F-M04070II	4	16	21	6.8	8	M4X0.7	3.9
F-M06100II	5	21	28	8.5	8	M6 × 1.0	6
F-M08125II	8	30	40	11	15	M8 × 1.25	8
F-M10125II	10	40	50	15	20	M10 × 1.25	10
F-M12125II	12	48	62	24	20	M12 × 1.25	12
F-M16150II	16	64	82	32	23	M16 × 1.5	16
F-M20150II	20	80	102	40	30	M20 × 1.5	20
F-M27200II	30	110	139	51	45	M27 × 2.0	30
F-M36200II	35	144	181	65	55	M36 × 2.0	35
F-M42200II	40	168	211	85	62	M42X2.0	40

#### PB Series



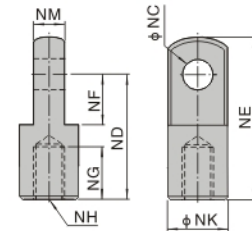
Type/Item	A	B	C	D	E	F	G	H
F-M04070IB	M4 × 0.7	12	3.3	3	21	9.1	7.5	8
F-M05080IB	M5 × 0.8	12	5	6.3	25	14.1	7.5	12

#### JSI Series



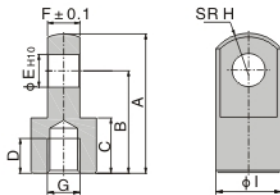
Type/Item	NA	NB	NC	ND	NE	NF	NG	NH	NJ	NK	NI
F-M10125J	42	40	12	20	17	14	13.8	10	16	30	M10 × 1.25
F-M14150J	52.5	50	12.5	22	21	19	13.8	10	19	40	M14 × 1.5
F-M18150J	66.5	64	16.5	28	27	24	19.8	14	24	50	M18 × 1.5
F-M22150J	83.5	80	23.5	40	29	26	29.8	22	34	60	M22 × 1.5
F-M26150J	83.5	80	23.5	40	29	26	29.8	22	34	60	M26 × 1.5
F-M27200J	120.5	119	28.5	45	40	36	31.8	25	34	92	M27 × 2.0

#### MA Series



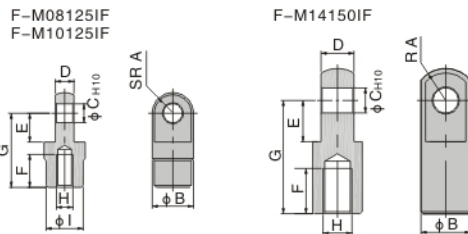
Type/Item	NC	ND	NE	NF	NG	NH	NK	NM
F-M12125IA	10	45	57	16.5	23	M12 × 1.25	24	14

#### ACQ Series



Type/Item	A	B	C	D	E	F	G	H	I
F-M05080IQ	21.5	16	9	6	5	4.7	M5x0.8	6.3	10
F-M06100IQ	32	25	11	8	5	6.2	M6x1.0	8.1	12
F-M08125IQ	34	25	13.5	8.5	8	7.7	M8x1.25	10.3	16
F-M10125IQ	41	30	16	11	10	9.7	M10x1.25	12.8	20
F-M14150IQ	42	30	16	14	10	17.6	M14x1.5	12	22
F-M18150IQ	56	40	20	18	14	21.6	M18x1.5	16	28
F-M22150IQ	71	50	23	21	18	27.6	M22x1.5	21	38
F-M26150IQ	79	55	24	22	22	31.6	M26x1.5	24	44

#### MF Series



Type/Item	A	B	C	D	E	F	G	H	I
F-M08125IF	9.5	20	9	9	14	16	36	M8 × 1.25	18
F-M10125IF	9.5	20	9	9	14	18	38	M10 × 1.25	18
F-M14150IF	15	24	12	16	20	22	55	M14 × 1.5	-



## Universal Joint



### Table for universal joint and cylinder

Cylinder Accessory	SE						SI									
	32	40	50	63	80	100	125	32	40	50	63	80	100	125	160	200
F-M10125U	●							●								
F-M12125U		●							●							
F-M16150U			●	●						●	●					
F-M20150U					●	●						●	●			
F-M27200U							●							●		
F-M36200U															●	●

Cylinder Accessory	SGC				SC				JSI								
	125	160	200	250	32	40	50	63	80	100	32	40	50	63	80	100	125
F-M10125U					●						●						
F-M12125U						●											
F-M14150U												●					
F-M16150U							●	●									
F-M18150U													●	●			
F-M20150U									●	●							
F-M27200U	●																●
F-M36200U		●	●														

Cylinder Accessory	MI				PB		MF		MA							
	8	10	12, 16	20	25, 32	40	10	12, 16	20	25, 32	40	16	20	25, 32	40	50, 63
F-M04070U	●	●					●									
F-M05080U								●								
F-M06100U			●									●				
F-M08125U				●						●			●			
F-M10125U					●						●			●		
F-M12125U						●									●	
F-M14150U												●				●

Cylinder Accessory	MAL				ACQ						ACP									
	20	25	32	40	12	16	20	25	32	40	50	63	12	16	20-40	50	63	80	100	
F-M05080U					●															
F-M06100U						●								●						
F-M08125U	●						●								●					
F-M10125U		●	●					●								●				
F-M12125U				●													●	●		
F-M14150U									●	●										
F-M16150U																			●	
F-M18150U											●	●								
F-M20150U																				●

### Ordering code

**F — M10 125 U**

Accessories code: F, M10, 125, U

Code: U Universal Joint

Screw thread		Thread pitch	
M04	M4	070	0.7mm
M05	M5	080	0.8mm
M06	M6	100	1.0mm
M08	M8	125	1.25mm
M10	M10		
M12	M12		
M14	M14	150	1.5mm
M16	M16		
M18	M18		
M20	M20		
M27	M27	200	2.0mm
M36	M36		

### Dimensions

**M8 and below**

**M10 and above**

Type/Item	PA	PB	PC(H9)	PD	PE	PF	PG	PH	PI	PJ	PK
F-M04070U	6	18	4	10	27	36	M4 x 0.7	13	12.5	10	8
F-M05080U	6	18	5	10	27	36	M5 x 0.8	13	12.5	10	8
F-M06100U	6.8	20	6	12	30	40	M6 x 1.0	13	13	11	9
F-M08125U	9	24	8	16	36	48	M8 x 1.25	13	16	14	12
F-M10125U	11	26	10	20	43	56	M10 x 1.25	13	19	17	14
F-M12125U	12	32	12	22	50	66	M12 x 1.25	13	22	19	16
F-M14150U	14	36	14	28	57	75	M14 x 1.5	13	25	22	19
F-M16150U	15	40	16	28	64	84	M16 x 1.5	15	27	22	21
F-M18150U	16.5	46	18	30	71	94	M18 x 1.5	15	31	27	23
F-M20150U	18	46	20	33	77	100	M20 x 1.5	15	34	30	25
F-M27200U	24	66	28	51	103	136	M27 x 2.0	15	46	41	35
F-M36200U	27.5	80	35	56	125	165	M36 x 2.0	15	57.5	50	43



## Y Knuckle

### Table for Y knuckle and cylinder

Cylinder Accessory	SE						SI									
	32	40	50	63	80	100	125	32	40	50	63	80	100	125	160	200
F-M10125YI	●							●								
F-M12125YI		●							●							
F-M16150YI			●	●						●	●					
F-M20150YI					●	●						●	●			
F-M27200YI														●		
F-M36200YI															●	●

Cylinder Accessory	SGC				SC					
	125	160	200	250	32	40	50	63	80	100
F-M10125YI					●					
F-M12125YI						●				
F-M16150YI							●	●		
F-M20150YI									●	●
F-M27200YI	●									
F-M36200YI		●	●							
F-M42200YI				●						

Cylinder Accessory	MA				MAL						
	16	20	25	32	40	50	63	20	25	32	40
F-M06100YI	●							●			
F-M08125YI		●									
F-M10125YI			●	●					●	●	
F-M12125YA					●						●
F-M14150YJ						●	●				

Cylinder Accessory	ACQ									
	12	16	20	25	32	40	50	63	80	100
F-M05080YQ	●									
F-M06100YQ		●								
F-M08125YQ			●							
F-M10125YQ				●						
F-M14150YQ					●	●				
F-M18150YQ							●	●		
F-M22150YQ									●	
F-M26150YQ										●

Cylinder Accessory	MI							
	8	10	12	16	20	25	32	40
F-M04070YE	●	●						
F-M06100YE			●	●				
F-M08125YE					●			
F-M10125YE						●	●	
F-M12125YI								●

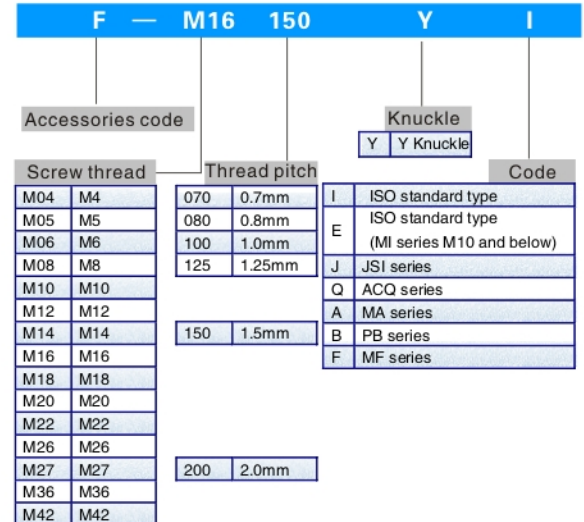
Cylinder Accessory	JSI						
	32	40	50	63	80	100	125
F-M10125YJ	●						
F-M14150YJ		●					
F-M18150YJ			●	●			
F-M22150YJ					●		
F-M26150YJ						●	
F-M27200YJ							●

Cylinder Accessory	MF			
	20	25	32	40
F-M08125YF	●			
F-M10125YF		●	●	
F-M14150YF				●

Cylinder Accessory	PB				
	4	6	10	12	16
F-M04070YB			●		
F-M05080YB				●	●



### Ordering code

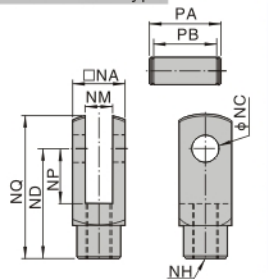




## Y Knuckle

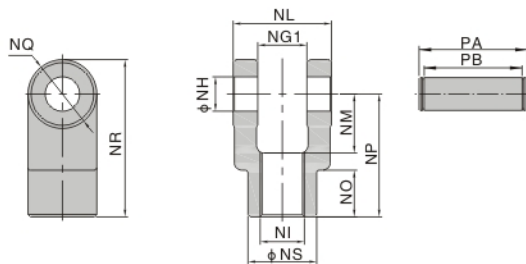
### ■ Dimensions

#### ISO standard type



Type\Item	NA	NC	ND	NP	NQ	NM	NH	PA	PB
F-M06100YI	12	5	21	14	28	6	M6 × 1.0	17.2	12.5
F-M08125YI	16	8	30	15	40	8	M8 × 1.25	21.6	16.5
F-M10125YI	19	10	40	20	52	10	M10 × 1.25	25.6	20
F-M12125YI	25.4	12	48	24	62	12	M12 × 1.25	32.4	26.2
F-M16150YI	32	16	64	32	80	16	M16 × 1.5	39	33
F-M20150YI	44.4	20	80	40	102	20	M20 × 1.5	53.4	45
F-M27200YI	54	30	110	55	139	30	M27 × 2.0	64.2	55
F-M36200YI	70	35	144	73	179	35	M36 × 2.0	80.2	71
F-M42200YI	85	40	168	86	211	40.3	M42 × 2.0	115	93

#### JSI Series

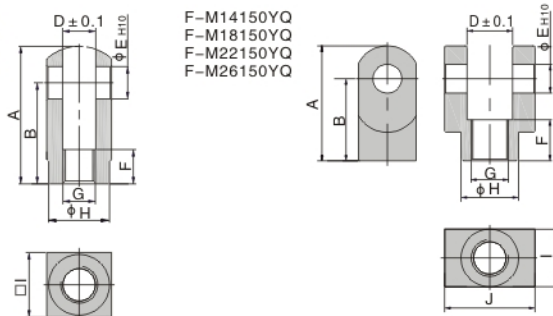


Type\Item	NG1	NH	NI	NL	NM	NO	NP	NQ	NR	NS	PA	PB
F-M10125YJ	14.2	10	M10 × 1.25	27.8	16	10	30	20	40	20	34.6	28.8
F-M14150YJ	14.2	10	M14 × 1.5	27.8	19	17	40	22	51	22	34.6	28.8
F-M18150YJ	20.2	14	M18 × 1.5	39.8	24	19	50	28	64	28	47	40.8
F-M22150YJ	30.2	22	M22 × 1.5	59.8	34	20	65	40	85	40	69.2	60.8
F-M26150YJ	30.2	22	M26 × 1.5	59.8	34	20	65	40	85	40	69.2	60.8
F-M27200YJ	32.2	25	M27 × 2.0	63.8	42	47	100	54	127	46	73.2	64.8

#### ACQ Series

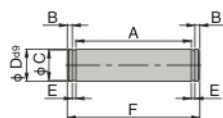
F-M05080YQ  
F-M06100YQ  
F-M08125YQ  
F-M10125YQ

F-M14150YQ  
F-M18150YQ  
F-M22150YQ  
F-M26150YQ



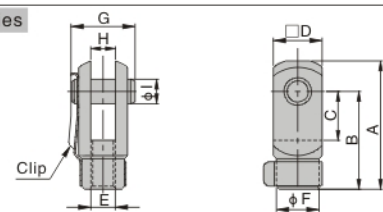
Type\Item	A	B	D	E	F	G	H	I	J
F-M05080YQ	22	16	5.3	5	6	M5 × 0.8	9	10	-
F-M06100YQ	28	21	6.6	5	11	M6 × 1.0	11	12	-
F-M08125YQ	34	25	8.3	8	8.5	M8 × 1.25	15	16	-
F-M10125YQ	41	30	10.3	10	10.5	M10 × 1.25	19	20	-
F-M14150YQ	42	30	18.4	10	16	M14 × 1.5	22	22	36
F-M18150YQ	56	40	22.4	14	20	M18 × 1.5	28	28	44
F-M22150YQ	71	50	28.4	18	23	M22 × 1.5	38	38	56
F-M26150YQ	79	55	32.4	22	24	M26 × 1.5	44	44	64

#### PIN



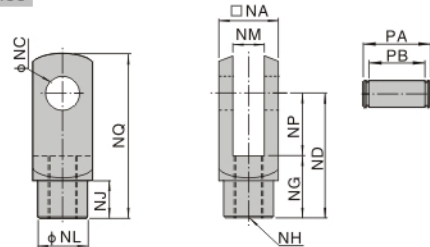
Type\Item	F-05080YQ	F-06100YQ	F-08125YQ	F-10125YQ	F-14150YQ	F-18150YQ	F-22150YQ	F-26150YQ
A	10.2	12.2	16.2	20.2	36.2	44.2	56.2	64.2
B	1.5	1.5	1.5	2	2	2	2	2.5
C	3	3	6	8	8	12	15	19
D	5	5	8	10	10	14	18	22
E	0.7	0.7	0.9	1.1	1.1	1.1	1.7	1.7
F	14.6	16.6	21	26.4	42.4	50.4	63.6	72.6

#### PB Series



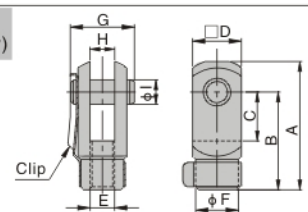
Type\Item	A	B	C	D	E	F	G	H	I
F-M04070YB	28	21	10.2	12	M4 × 0.7	10	15.5	3.2	3.3
F-M05080YB	28	21	10.2	12	M5 × 0.8	10	15.5	6.5	5

#### MA Series



Type\Item	NA	NC	ND	NG	NH	NJ	NL	NM	NN	NP	NQ	PA	PB
F-M12125YA	25.4	10	45	25	M12 × 1.25	15	23	14	10	20	57	32	26.2

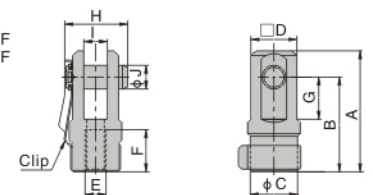
#### ISO standard type (MI series M10 and below)



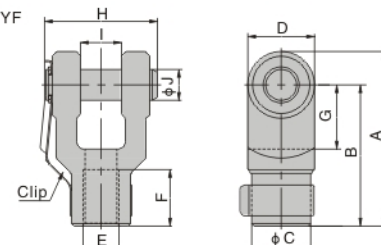
Type\Item	A	B	C	D	E	F	G	H	I
F-M04070YE	22	16	8	8	M4 × 0.7	7	11.5	4	4
F-M06100YE	32	24	12	12	M6 × 1.0	10	16	6	6
F-M08125YE	42	32	16	16	M8 × 1.25	14	21	8	8
F-M10125YE	52	40	20	19	M10 × 1.25	18	25	10	10

#### MF Series

F-M08125YF  
F-M10125YF



F-M14150YF



Type\Item	A	B	C	D	E	F	G	H	I	J
F-M08125YF	46	36	18	17.5	M8 × 1.25	16	16	24	9	9
F-M10125YF	48	38	18	17.5	M10 × 1.25	18	16	24	9	9
F-M14150YF	68	55	23	26	M14 × 1.5	22	25	44	16	12