

SERIE

F

CILINDRI CORSA BREVE
SHORT STROKE CYLINDERS

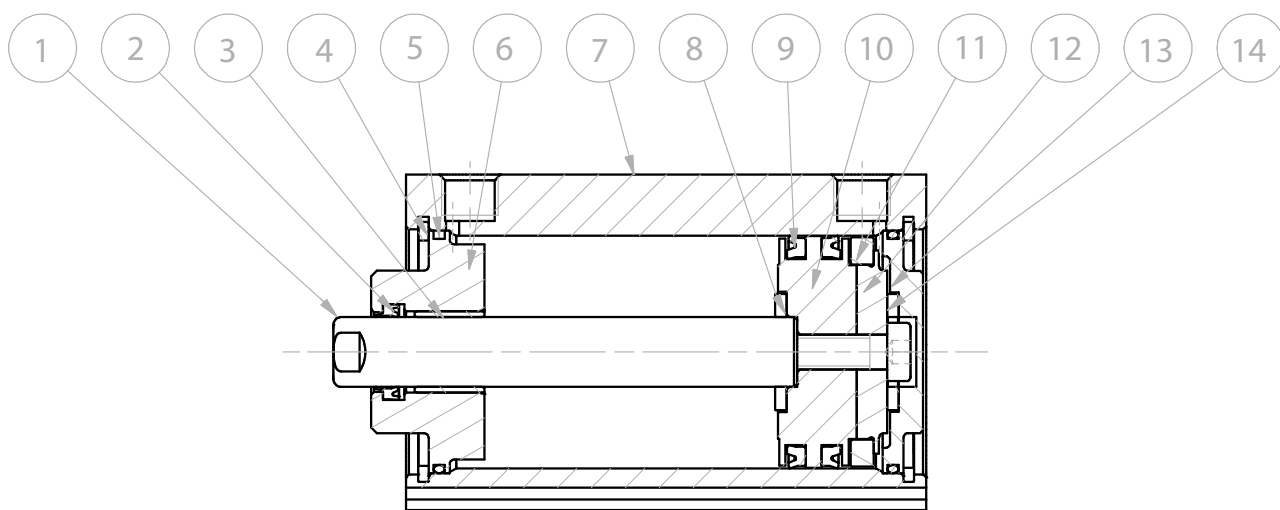

ARTEC[®]
PNEUMATIC COMPONENTS

CARATTERISTICHE TECNICHE - TECHNICAL CHARACTERISTICS

Pressione di esercizio <i>Working pressure</i>	1 ÷ 10 bar (doppio effetto - <i>double acting</i>) 2 ÷ 10 bar (semplice effetto - <i>single acting</i>)
Temperatura di esercizio <i>Working temperature</i>	0 ÷ +80 °C (-20 °C con aria secca - <i>with dry air</i>) 0 ÷ +150 °C (con guarnizioni per alte temperature - <i>with high temperature seals</i>)
Versioni - Versions	semplice effetto - doppio effetto - antirotazione - stelo passante <i>single acting - double acting - anti-rotation - double rod</i>
Alesaggi - Bores	Ø 12 - 16 - 20 - 25 - 32 - 40 - 50 - 63 - 80 - 100
Corse - Strokes	vedere tabelle corse standard - <i>see standard stroke tables</i>
Fluido - Fluid	aria compressa, filtrata, non lubrificata - <i>compressed air, filtered, no lubrication</i>

CARATTERISTICHE COSTRUTTIVE - CONSTRUCTIVE CHARACTERISTICS

①	Stelo - Rod	acciaio inox AISI 303 - <i>stainless steel AISI 303</i>
② ⑨	Guarnizioni - Seals	poliuretano - <i>polyurethane</i>
③	Boccola - Bush	acciaio+PTFE - <i>steel+PTFE</i>
④	Seeger - Retaining ring	acciaio - <i>steel</i>
⑤	O-ring	nbr
⑥ ⑬	Testate - Covers	Ø 12÷25 ottone - <i>brass</i> Ø 32÷100 alluminio anodizzato - <i>anodized aluminium</i>
⑦	Tubo - Tube	alluminio anodizzato - <i>anodized aluminium</i>
⑧ ⑭	Paracolpo - Bumper	Vulkollan
⑩ ⑫	Pistone - Piston	delrin - <i>delrin</i> alluminio - <i>aluminium</i>
⑪	Magnete - Magnet	plastoferrite - <i>rubber magnet</i>
	Molla - Spring	acciaio - <i>steel</i>



CHIAVE DI CODIFICA

KEY CODE

F D M 0 5 0 . 0 3 0 . G S . F .

	ALESAGGIO BORE (Ø)	CORSA STROKE (mm)		OPZIONE - OPTION
	012 - 016 - 020 - 025 - 032	vedere tabelle corse std see std stroke tables		CP cerniera posteriore montata hinge rear mounted
	040 - 050 - 063 - 080 - 100			OPZIONE - OPTION
				S seeger inox stainless steel retaining ring
				STELO - ROD
				F femmina female
				GUARNIZIONI - SEALS
				GS guarnizioni standard standard seals
				VR guarnizione stelo per alte temperature high temperature rod seal
				VA tutte le guarnizioni per alte temperature all seals for high temperature
	VERSIONE - VERSION			
SR	semplice effetto single acting			
SM	semplice effetto magnetico magnetic single acting			
SE	semplice effetto molla posteriore single acting rear spring			
SEM	semplice effetto molla posteriore magnetico magnetic single acting rear spring			
DR	doppio effetto double acting			
DM	doppio effetto magnetico magnetic double acting			
DA	doppio effetto antirotativo double acting			
DMA	doppio effetto magnetico antirotativo magnetic double acting			
DP	double rod double acting			
DMP	doppio effetto magnetico stelo passante double rod magnetic double acting			
DPA	doppio effetto stelo passante antirotazione double rod double acting			
DMPA	doppio effetto magnetico stelo passante antirotazione double rod magnetic double acting			
	SERIE - SERIES			
F	tubo profilato con cave per sensori tube with slots for sensors			

SERIE

F

ESECUZIONI A RICHIESTA - ON REQUEST

Stelo forato - *Hollow rod*

Stelo prolungato (W) - *Extended rod (W)*

Filetti speciali (se stelo maschio dado stelo non fornito) - *Special thread (if male rod without rod nut)*

FORZE TEORICHE DI TRAZIONE (P=6bar)

THEORETICAL FORCES OF TRACTION (P=6bar)

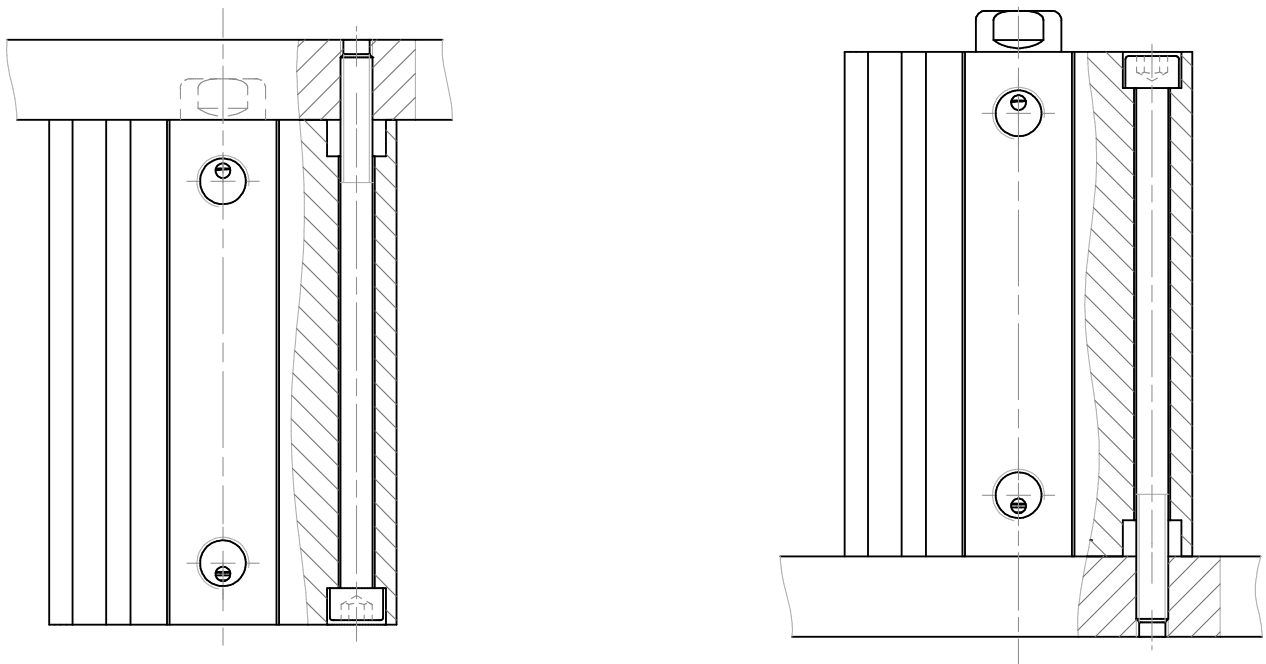
		Ø	012	016	020	025	032	040	050	063	080	100
FSR FSM	IN SPINTA IN PUSH	[N]	51	106	170	258	441	729	1.070	1.720	2.880	4.440
	IN TIRO IN PULL	[N]	5	6	6	13	18	20	40	49	76	131
FDR FDM	IN SPINTA IN PUSH	[N]	58	114	176	277	462	763	1.110	1.770	2.990	4.650
	IN TIRO IN PULL	[N]	42	84	129	230	392	663	990	1.650	2.800	4.370
FDA FDMA	IN SPINTA IN PUSH	[N]	-	-	173	272	454	750	1.110	1.750	2.970	4.620
	IN TIRO IN PULL	[N]	-	-	123	225	385	653	980	1.630	2.770	4.330
FDP FDMP	IN SPINTA IN PUSH	[N]	42	84	129	230	392	663	990	1.650	2.800	4.370
	IN TIRO IN PULL	[N]	42	84	129	230	392	663	990	1.650	2.800	4.370

SERIE

F

ESEMPIO DI FISSAGGIO

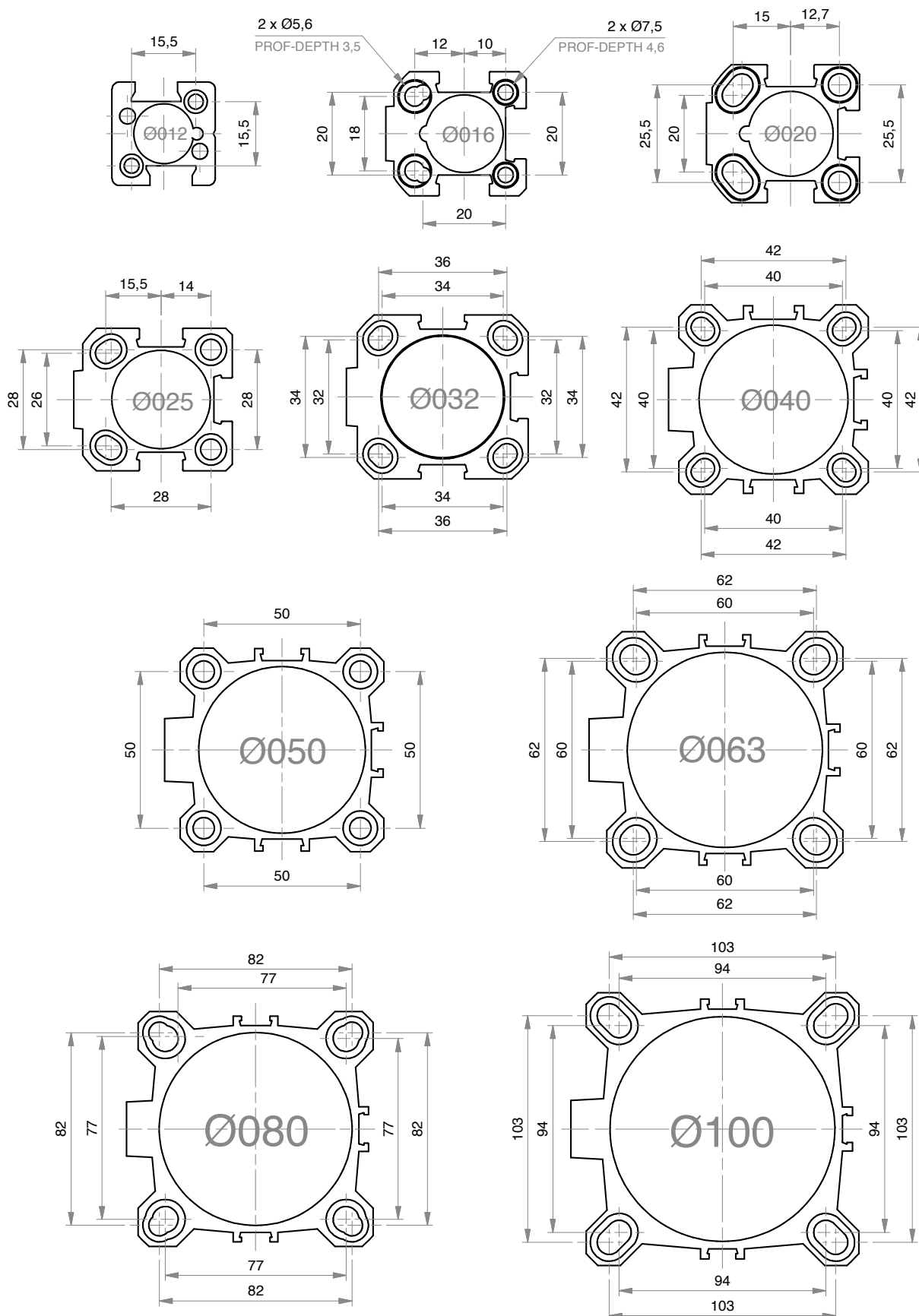
MOUNTING EXAMPLE



Il fissaggio deve avvenire mediante viti amagnetiche passanti attraverso il cilindro
The fixing must be with non-magnetic screws through the cylinder

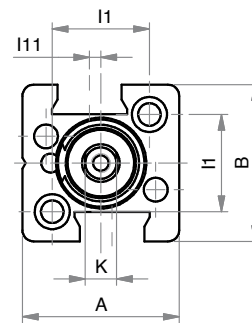
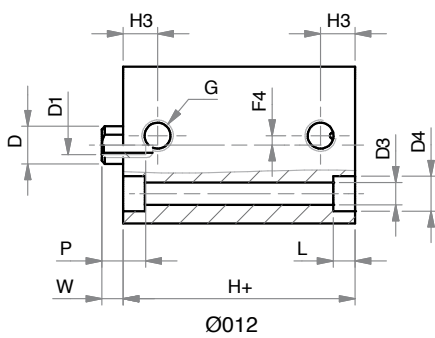
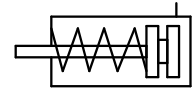
PROFILO ESTRUSO DI ALLUMINIO

EXTRUDED ALUMINIUM PROFILE

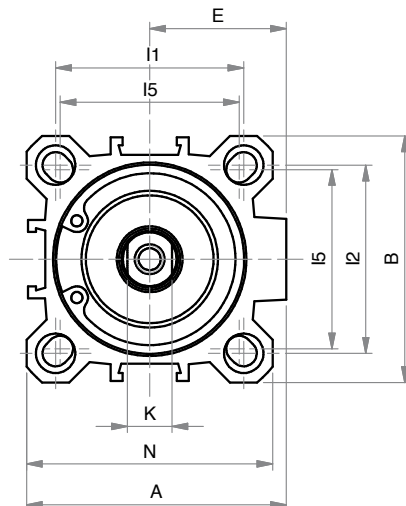
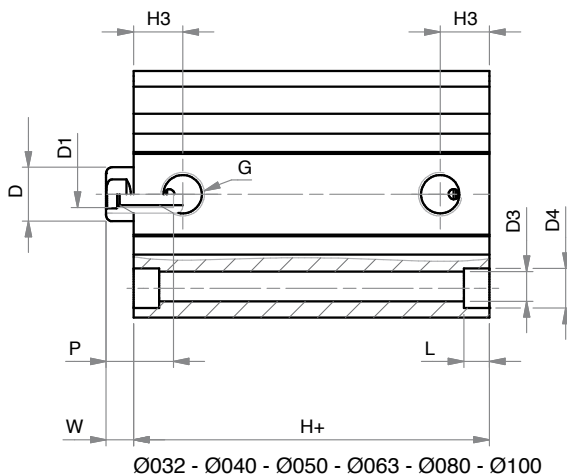
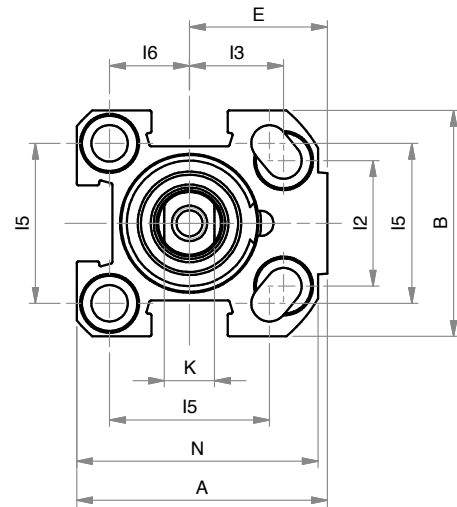
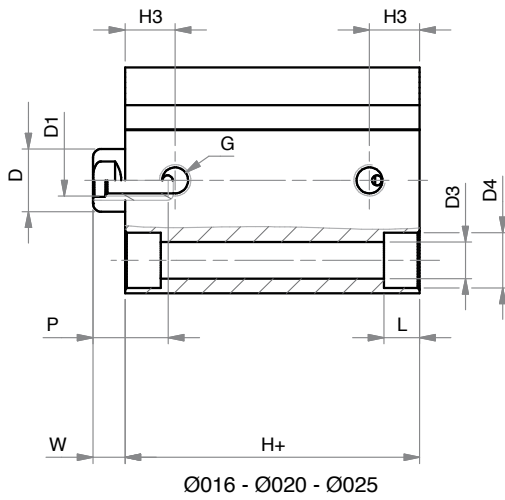


SEMPLICE EFFETTO - MOLLA ANTERIORE

SINGLE ACTING - FRONT SPRING



SERIE
F



DIMENSIONI - DIMENSIONS

Ø	012	016	020	025	032	040	050	063	080	100
A	25	34	40	44,5	51	58	70	89	105	131
B	25	30	36	40	46	55	65	80	100	124
Ø D	6	8	10	10	12	12	16	16	20	25
D1	M3	M4	M5	M5	M6	M6	M8	M8	M10	M12
Ø D3	3,7	**	5,8	5,8	5,8	5,8	6,8	9	9	11
Ø D4	5,6	**	9	9	9	9	11	14	14	17,2
E	-	19	22	24,5	27	30,5	37,5	46	55	69
G	M5	M5	M5	G1/8	G1/8	G1/8	G1/8	G1/8	G1/4	G1/4
H+	17***	27	27	28,5	29,5*	29,5*	34,5*	37*	46*	56*
H3	5,5	8	8	10,5	11,5	11	11,5	11	14	16
I1	15,5	-	-	-	36	42	50	62	82	103
I2	-	18	20	26	32	42	50	62	82	103
I3	-	12	15	15,5	-	-	-	-	-	-
I5	-	20	25,5	28	34	40	50	60	77	94
I6	-	10	12,7	14	-	-	-	-	-	-
K	5	6	8	8	10	10	13	13	17	22
L	3,5	4,6	5,7	5,7	5,7	5,7	6,8	8,8	9	11
L1	-	3,5	5,7	5,7	-	-	-	-	-	-
N	-	32	38,5	42	48	55	65	80	100	124
P	7	11	12	12	15	15	17	17	17	22
W	3,5	4,5	5	5,5	6	6	7,5	7	8	10

+ = aggiungere lunghezza corsa (mm) - add stroke length (mm)

* per corse - for strokes 040 - 050:

Ø 032-040-050-063-080-100 aggiungere - add +10 mm

** vedi quote pag.121 - see dimensions page 121

*** per corse - for strokes 15-20-25

Ø 12 aggiungere - add + 5 mm

CORSE STANDARD - STANDARD STROKES

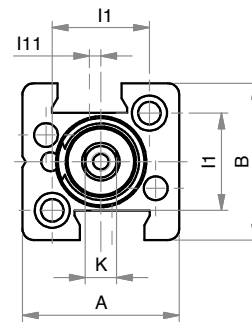
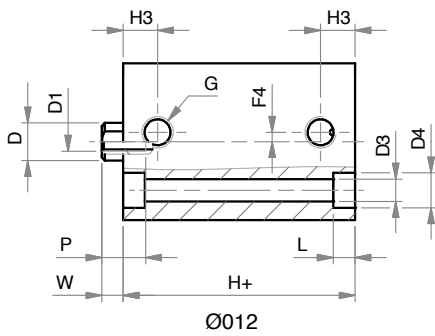
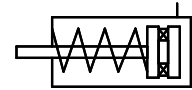
Ø	012	016	020	025	032	040	050	063	080	100
005	x	x	x	x	x	x	x	x	x	x
010	x	x	x	x	x	x	x	x	x	x
015	x	x	x	x	x	x	x	x	x	x
020	x	x	x	x	x	x	x	x	x	x
025	x	x	x	x	x	x	x	x	x	x
030					x	x	x	x	x	x
040					x	x	x	x	x	x
050					x	x	x	x	x	x

SERIE

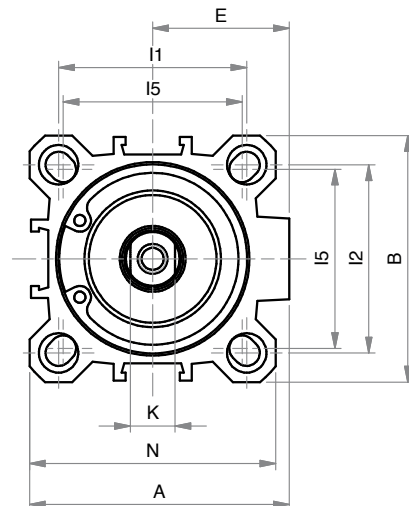
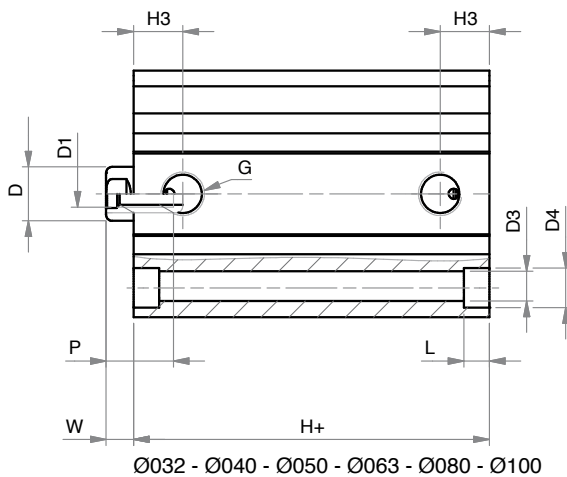
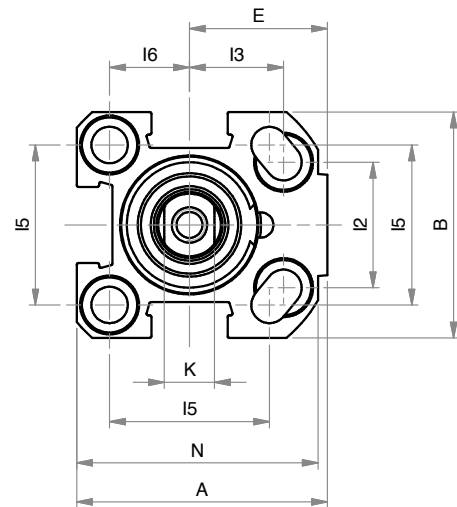
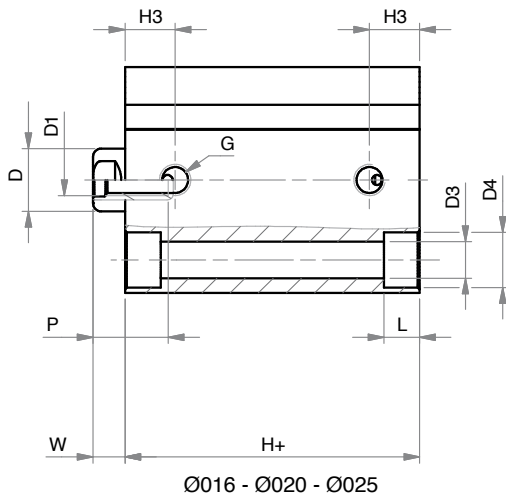
F

SEMPLICE EFFETTO MAGNETICO - MOLLA ANTERIORE

MAGNETIC SINGLE ACTING - FRONT SPRING



SERIE
F



DIMENSIONI - DIMENSIONS

Ø	012	016	020	025	032	040	050	063	080	100
A	25	34	40	44,5	51	58	70	89	105	131
B	25	30	36	40	46	55	65	80	100	124
Ø D	6	8	10	10	12	12	16	16	20	25
D1	M3	M4	M5	M5	M6	M6	M8	M8	M10	M12
Ø D3	3,7	**	5,8	5,8	5,8	5,8	6,8	9	9	11
Ø D4	5,6	**	9	9	9	9	11	14	14	17,2
E	-	19	22	24,5	27	30,5	37,5	46	55	69
G	M5	M5	M5	G1/8	G1/8	G1/8	G1/8	G1/8	G1/4	G1/4
H+	27	32*	32*	38,5*	39,5*	39,5*	39,5*	42*	46*	56*
H3	5,5	8	8	10,5	11,5	11	11,5	11	14	16
I1	15,5	-	-	-	36	42	50	62	82	103
I2	-	18	20	26	32	42	50	62	82	103
I3	-	12	15	15,5	-	-	-	-	-	-
I5	-	20	25,5	28	34	40	50	60	77	94
I6	-	10	12,7	14	-	-	-	-	-	-
K	5	6	8	8	10	10	13	13	17	22
L	3,5	4,6	5,7	5,7	5,7	5,7	6,8	8,8	9	11
L1	-	3,5	5,7	5,7	-	-	-	-	-	-
N	-	32	38,5	42	48	55	65	80	100	124
P	7	11	12	12	15	15	17	17	17	22
W	3,5	4,5	4,5	5,5	5,5	6,5	7,5	6,5	8	10

+ = aggiungere lunghezza corsa (mm) - add stroke length (mm)

* per corse - for strokes 025:

Ø 016-020 aggiungere - add +6 mm

Ø 025 aggiungere - add +1 mm

* per corse - for stroke 040-050:

Ø 032-040-050-063-080-100 aggiungere - add +10 mm

** vedi quote pag.121 - see dimensions page 121

CORSE STANDARD - STANDARD STROKES

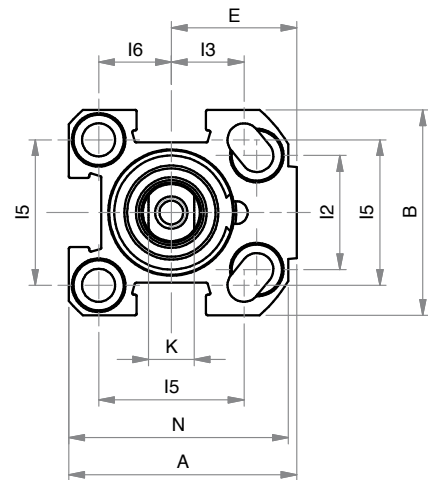
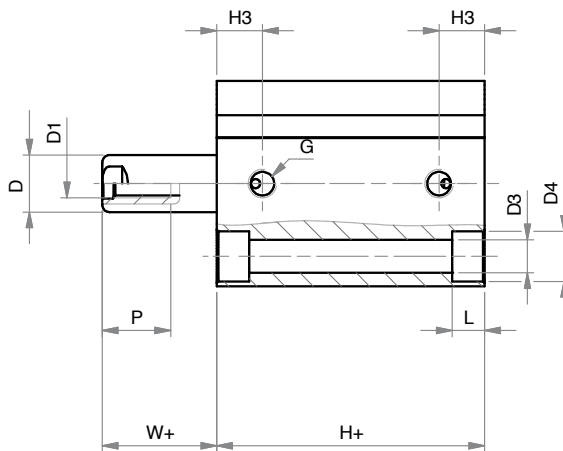
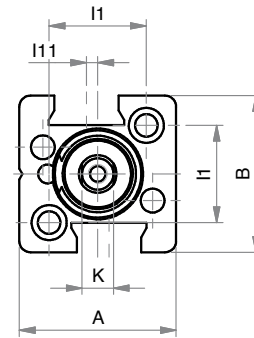
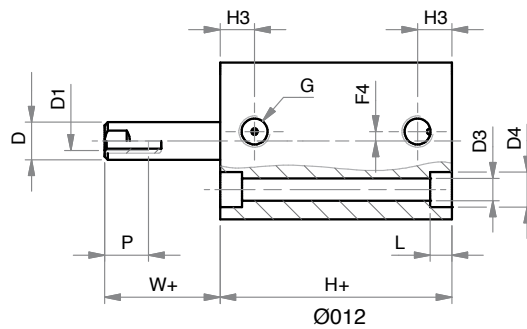
Ø	012	016	020	025	032	040	050	063	080	100
005	x	x	x	x	x	x				
010	x	x	x	x	x	x	x	x	x	x
015		x	x	x	x	x	x	x	x	x
020			x	x	x	x	x	x	x	x
025			x	x	x	x	x	x	x	x
030					x	x	x	x	x	x
040					x	x	x	x	x	x
050					x	x	x	x	x	x

SEMPLICE EFFETTO (MAGNETICO) - MOLLA POSTERIORE

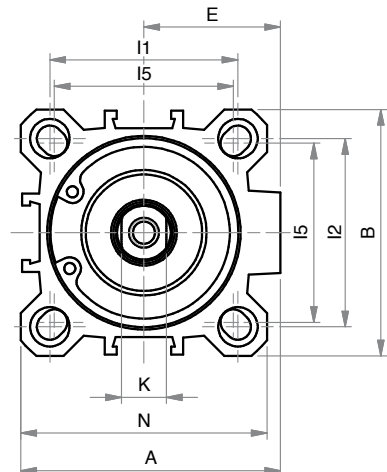
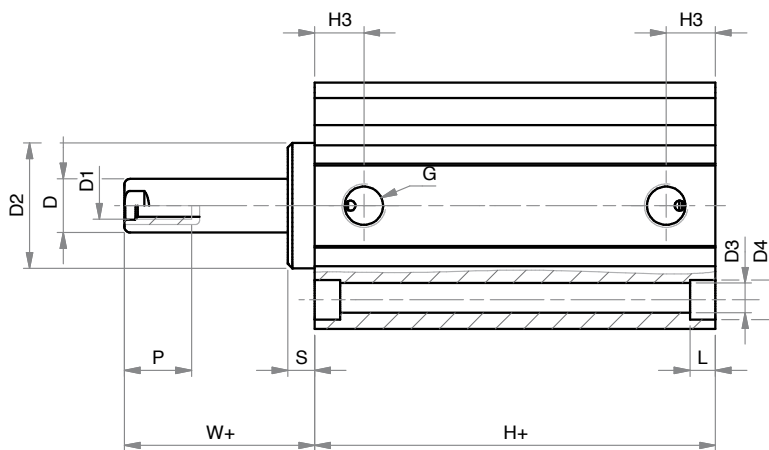
FSE

FSEM

(MAGNETIC) SINGLE ACTING - REAR SPRING



Ø016 - Ø020 - Ø025



Ø032 - Ø040 - Ø050 - Ø063 - Ø080 - Ø100

SERIE

F

DIMENSIONI - DIMENSIONS

Ø	012	016	020	025	032	040	050	063
A	25	34	40	44,5	51	58	70	89
B	25	30	36	40	46	55	65	80
Ø D	6	8	10	10	12	12	16	16
D1	M3	M4	M5	M5	M6	M6	M8	M8
Ø D2	-	-	-	-	24,5	28	34	38,5
Ø D3	3,7	**	5,8	5,8	5,8	5,8	6,8	9
Ø D4	5,6	**	9	9	9	9	11	14
E	-	19	22	24,5	27	30,5	37,5	46
G	M5	M5	M5	G1/8	G1/8	G1/8	G1/8	G1/8
H+	***	32*	32*	38,5*	39,5	39,5	39,5	42
H3	5,5	8	8	10,5	11,5	11	11,5	11
I1	15,5	-	-	-	36	42	50	62
I2	-	18	20	26	32	42	50	62
I3	-	12	15	15,5	-	-	-	-
I5	-	20	25,5	28	34	40	50	60
I6	-	10	12,7	14	-	-	-	-
K	5	6	8	8	10	10	13	13
L	3,5	4,6	5,7	5,7	5,7	5,7	6,8	8,8
L1	-	3,5	5,7	5,7	-	-	-	-
N	-	32	38,5	42	48	55	65	80
P	7	11	12	12	15	15	17	17
S	-	-	-	-	5	6	6	8
W+	3,5	4,5	4,5	5,5	11	12,5	13,5	15

+ = aggiungere lunghezza corsa (mm) - add stroke length (mm)

* per corse - for strokes 020-025:

Ø 020 aggiungere - add +11 mm

Ø 025 aggiungere - add +6 mm

Ø 032 aggiungere - add +5 mm

* per corsa - for stroke 030:

Ø 032 aggiungere - add +10 mm

** vedi quote pag.121 - see dimensions page 121

*** FSE=17 - FSEM=27

CORSE STANDARD - STANDARD STROKES

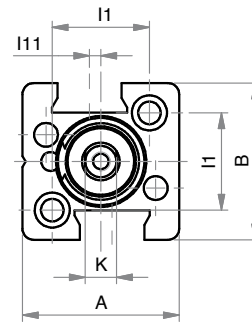
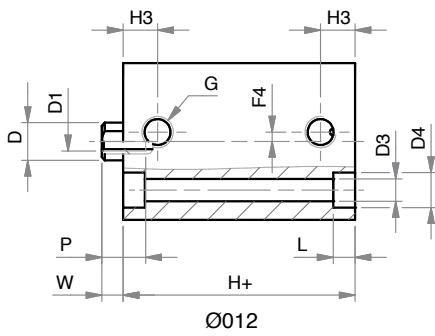
Ø	012	016	020	025	032	040	050	063
005	x	x	x	x	x			
010	x	x	x	x	x	x	x	x
015		x	x	x	x	x	x	x
020			x	x	x	x	x	x
025			x	x	x	x	x	x
030					x	x	x	x

SERIE

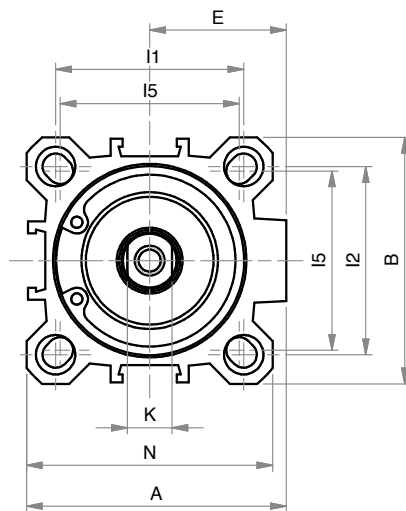
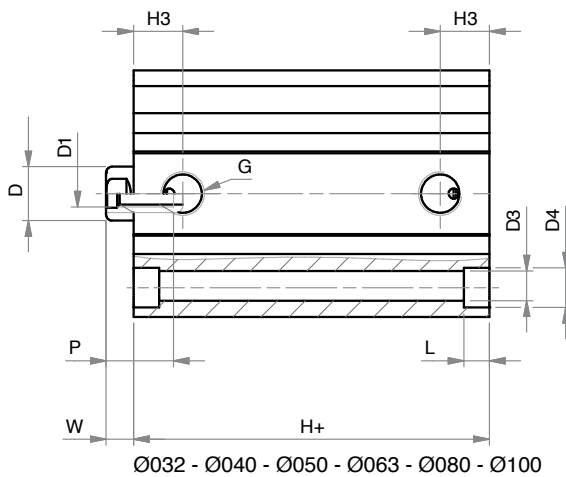
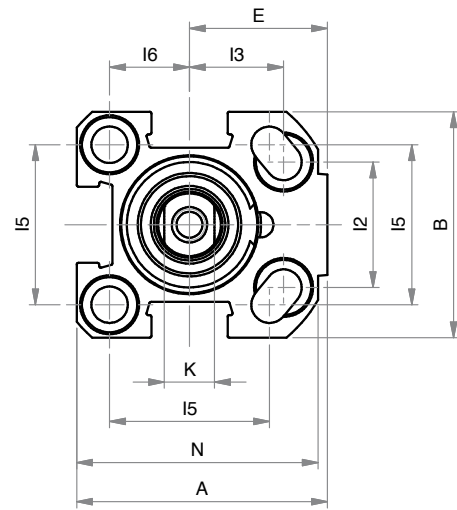
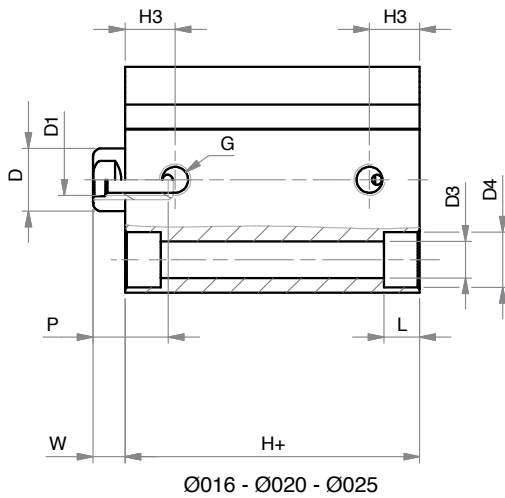
F

DOPPIO EFFETTO

DOUBLE ACTING



SERIE
F



DIMENSIONI - DIMENSIONS

Ø	012	016	020	025	032	040	050	063	080	100
A	25	34	40	44,5	51	58	70	89	105	131
B	25	30	36	40	46	55	65	80	100	124
Ø D	6	8	10	10	12	12	16	16	20	25
D1	M3	M4	M5	M5	M6	M6	M8	M8	M10	M12
Ø D3	3,7	**	5,8	5,8	5,8	5,8	6,8	9	9	11
Ø D4	5,6	**	9	9	9	9	11	14	14	17,2
E	-	19	22	24,5	27	30,5	37,5	46	55	69
G	M5	M5	M5	G1/8	G1/8	G1/8	G1/8	G1/8	G1/4	G1/4
H+	17	27*	27*	28,5*	29,5	29,5	34,5	37	46	56
H3	5,5	8	8	10,5	11,5	11	11,5	11	14	16
I1	15,5	-	-	-	36	42	50	62	82	103
I2	-	18	20	26	32	42	50	62	82	103
I3	-	12	15	15,5	-	-	-	-	-	-
I5	-	20	25,5	28	34	40	50	60	77	94
I6	-	10	12,7	14	-	-	-	-	-	-
K	5	6	8	8	10	10	13	13	17	22
L	3,5	4,6	5,7	5,7	5,7	5,7	6,8	8,8	9	11
L1	-	3,5	5,7	5,7	-	-	-	-	-	-
N	-	32	38,5	42	48	55	65	80	100	124
P	7	11	12	12	15	15	17	17	17	22
W	3,5	4,5	5	5,5	6	6	7,5	7	8	10

+ = aggiungere lunghezza corsa (mm) - add stroke length (mm)

* per corse - for strokes 030-040-050:

Ø 016-020 aggiungere - add +1 mm

* per corse - for strokes 040-050:

Ø 025 aggiungere - add +1 mm

** vedi quote pag.129 - see dimensions page 129

SERIE
F

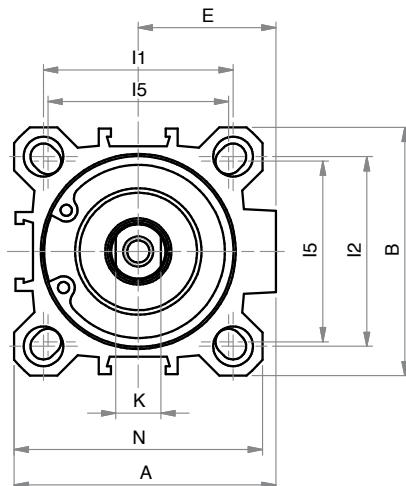
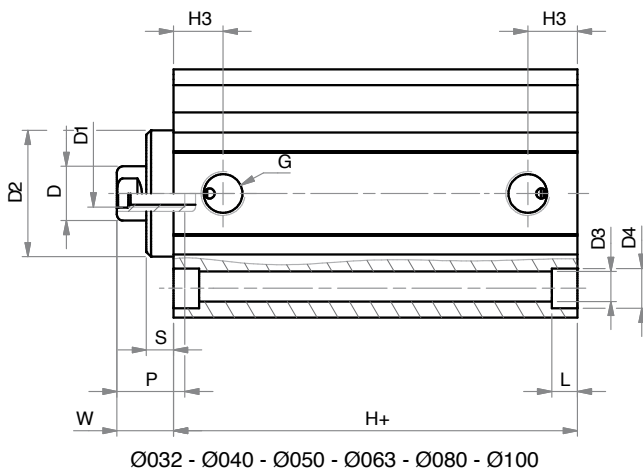
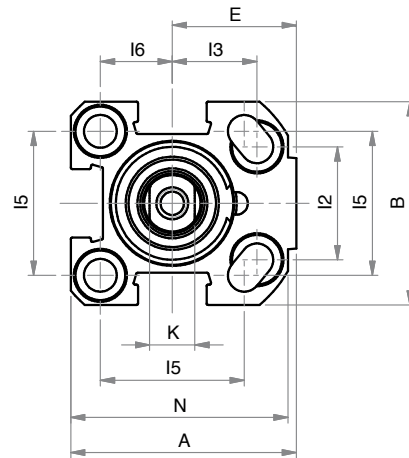
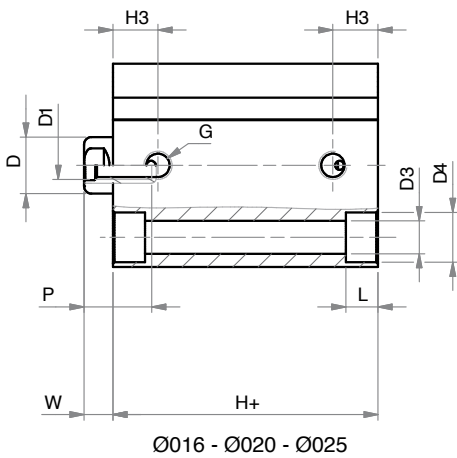
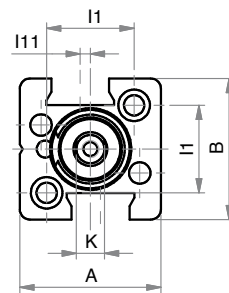
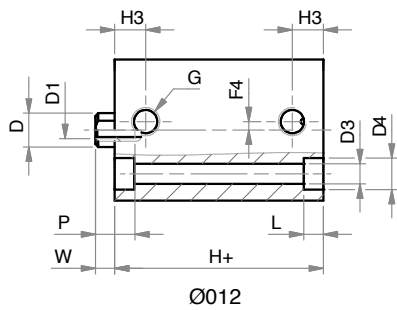
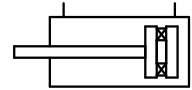
CORSE STANDARD - STANDARD STROKES

Ø	012	016	020	025	032	040	050	063	080	100
005	x	x	x	x	x	x				
010	x	x	x	x	x	x	x	x	x	x
015	x	x	x	x	x	x	x	x	x	x
020	x	x	x	x	x	x	x	x	x	x
025	x	x	x	x	x	x	x	x	x	x
030	x	x	x	x	x	x	x	x	x	x
040	x	x	x	x	x	x	x	x	x	x
050	x	x	x	x	x	x	x	x	x	x
060					x	x	x	x	x	x
080					x	x	x	x	x	x
100					x	x	x	x	x	x
125									x	x
160									x	x
200									x	x
250									x	x

DOPPIO EFFETTO MAGNETICO

MAGNETIC DOUBLE ACTING

FDM



SERIE
F

DIMENSIONI - DIMENSIONS

Ø	012	016	020	025	032	040	050	063	080	100
A	25	34	40	44,5	51	58	70	89	105	131
B	25	30	36	40	46	55	65	80	100	124
Ø D	6	8	10	10	12	12	16	16	20	25
D1	M3	M4	M5	M5	M6	M6	M8	M8	M10	M12
Ø D2	-	-	-	-	24,5	28	34	38,5	44	56
Ø D3	3,7	**	5,8	5,8	5,8	5,8	6,8	9	9	11
Ø D4	5,6	**	9	9	9	9	11	14	14	17,2
E	-	19	22	24,5	27	30,5	37,5	46	55	69
G	M5	M5	M5	G1/8	G1/8	G1/8	G1/8	G1/8	G1/4	G1/4
H+	27	32*	32*	38,5*	39,5	39,5	39,5	42	46	56
H3	5,5	8	8	10,5	11,5	11	11,5	11	14	16
I1	15,5	-	-	-	36	42	50	62	82	103
I2	-	18	20	26	32	42	50	62	82	103
I3	-	12	15	15,5	-	-	-	-	-	-
I5	-	20	25,5	28	34	40	50	60	77	94
I6	-	10	12,7	14	-	-	-	-	-	-
K	5	6	8	8	10	10	13	13	17	22
L	3,5	4,6	5,7	5,7	5,7	5,7	6,8	8,8	9	11
L1	-	3,5	5,7	5,7	-	-	-	-	-	-
N	-	32	38,5	42	48	55	65	80	100	124
P	7	11	12	12	15	15	17	17	17	22
S	-	-	-	-	5	6	6	8	10	10,5
W	3,5	4,5	4,5	5,5	11	12,5	13,5	15	18	20,5

+ = aggiungere lunghezza corsa (mm) - add stroke length (mm)

* per corse - for strokes >= 025:

Ø 016-020 aggiungere - add +6 mm

Ø 025 aggiungere - add +1 mm

** vedi quote pag.121 - see dimensions page 121

SERIE
F

CORSE STANDARD - STANDARD STROKES

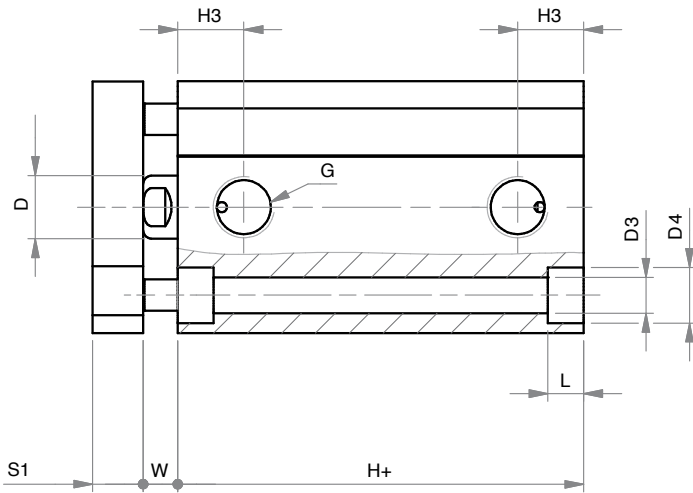
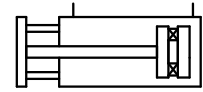
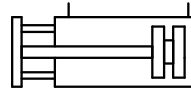
Ø	012	016	020	025	032	040	050	063	080	100
005	x	x	x	x	x	x				
010	x	x	x	x	x	x	x	x	x	x
015	x	x	x	x	x	x	x	x	x	x
020	x	x	x	x	x	x	x	x	x	x
025	x	x	x	x	x	x	x	x	x	x
030	x	x	x	x	x	x	x	x	x	x
040	x	x	x	x	x	x	x	x	x	x
050		x	x	x	x	x	x	x	x	x
060		x	x	x	x	x	x	x	x	x
080		x	x	x	x	x	x	x	x	x
100		x	x	x	x	x	x	x	x	x
125			x	x	x	x	x	x	x	x
160					x	x	x	x	x	x
200							x	x	x	x
250									x	x

DOPPIO EFFETTO (MAGNETICO) ANTIROTAZIONE

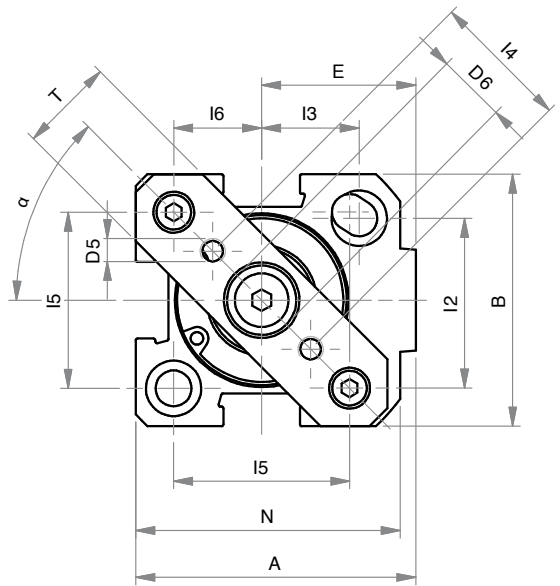
FDA

FDMA

ANTI-ROTATION (MAGNETIC) DOUBLE ACTING

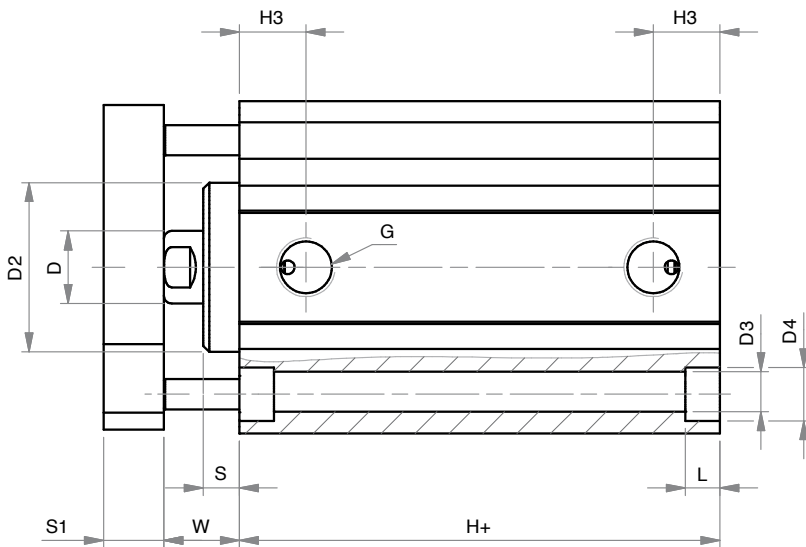


Ø016 - Ø020 - Ø025

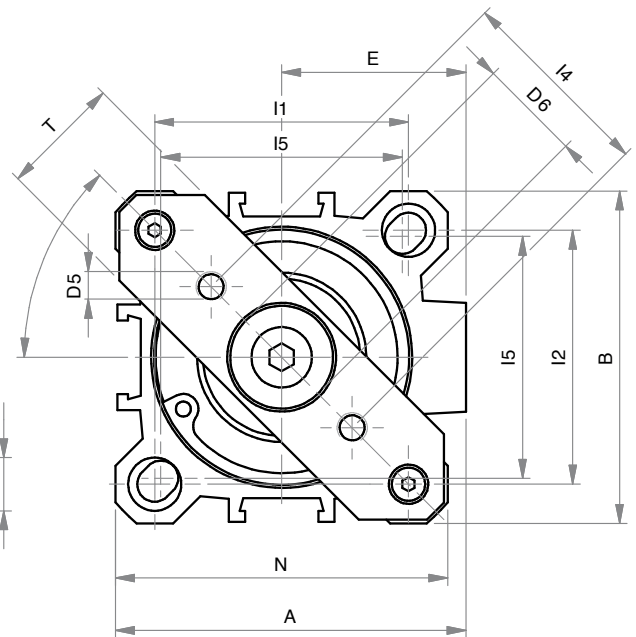


SERIE

F



Ø032 - Ø040 - Ø050 - Ø063 - Ø080 - Ø100



DIMENSIONI - DIMENSIONS

	020	025	032	040	050	063	080	100
Ø	020	025	032	040	050	063	080	100
A	40	44,5	51	58	70	89	105	131
B	36	40	46	55	65	80	100	124
α	45°	45°	41,5°	45°	45°	45°	45°	45°
Ø D	10	10	12	12	16	16	20	25
Ø D2	-	-	24,5	28	34	38,5	44	56
Ø D3	5,8	5,8	5,8	5,8	6,8	9	9	11
Ø D4	9	9	9	9	11	14	14	17,2
D5	M4	M4	M5	M5	M6	M6	M8	M10
Ø D6	11	11	17	17	22	22	28	30
E	22	24,5	27	30,5	37,5	46	55	69
G	M5	G1/8	G1/8	G1/8	G1/8	G1/8	G1/4	G1/4
H+	32*	38,5*	39,5	39,5	39,5	42	46	56
H3	8	10,5	11,5	11	11,5	11	14	16
I1	-	-	36	42	50	62	82	103
I2	20	26	32	42	50	62	82	103
I3	15	15,5	-	-	-	-	-	-
I4	20	22	28	33	42	50	65	80
I5	25,5	28	34	40	50	60	77	94
I6	12,7	14	-	-	-	-	-	-
K	8	8	10	10	13	13	17	22
L	5,7	5,7	5,7	5,7	6,8	8,8	9	11
L1	5,7	5,7	-	-	-	-	-	-
N	38,5	42	48	55	65	80	100	124
S	-	-	5	6	6	8	10	10,5
S1	8	8	10	10	12	12	14	14
T	15	15	20	20	30	30	50	50
W	4,5	5,5	11	12,5	13,5	15	18	20,5

+ = aggiungere lunghezza corsa (mm) - add stroke length (mm)

* per corse - for strokes \geq 025:

Ø 020 aggiungere - add +6 mm

Ø 025 aggiungere - add +1 mm

CORSE STANDARD - STANDARD STROKES

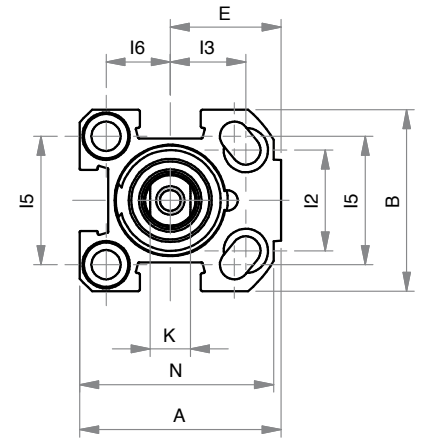
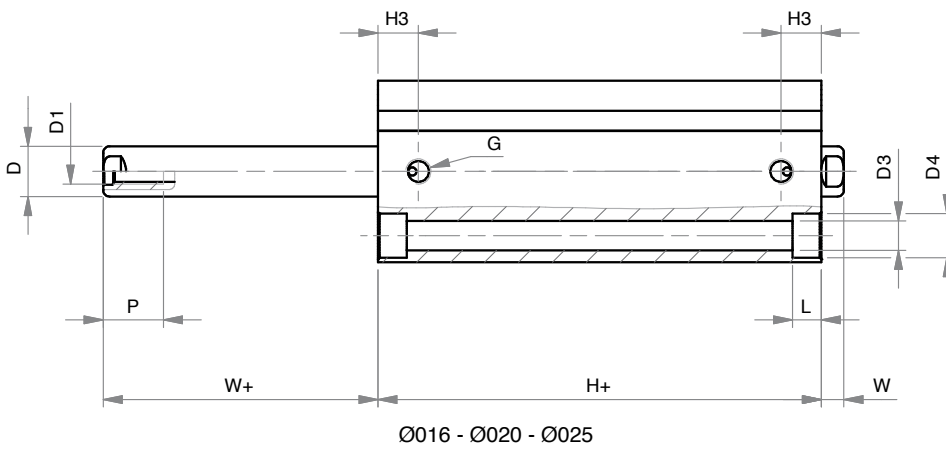
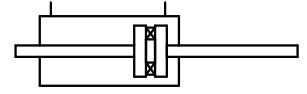
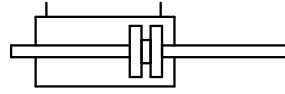
Ø	020	025	032	040	050	063	080	100
005	x	x	x	x				
010	x	x	x	x	x	x	x	x
015	x	x	x	x	x	x	x	x
020	x	x	x	x	x	x	x	x
025	x	x	x	x	x	x	x	x
030	x	x	x	x	x	x	x	x
040	x	x	x	x	x	x	x	x
050	x	x	x	x	x	x	x	x
060	x	x	x	x	x	x	x	x
080	x	x	x	x	x	x	x	x
100	x	x	x	x	x	x	x	x
125	x	x	x	x	x	x	x	x
160						x	x	x

DOPPIO EFFETTO (MAGNETICO) STELO PASSANTE

FDP

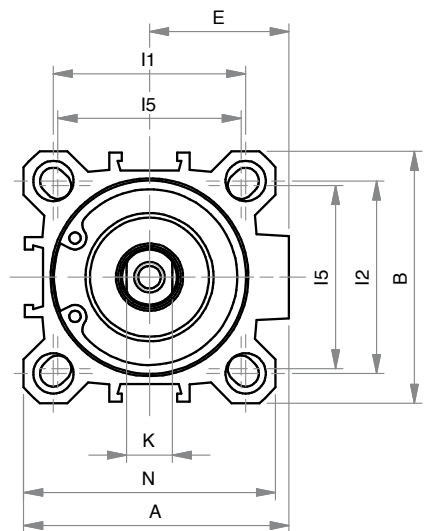
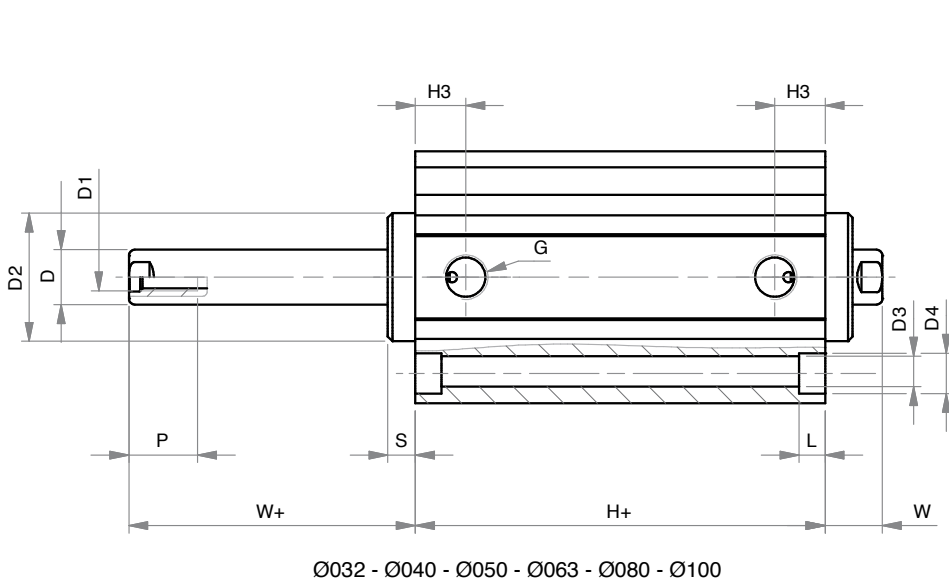
FDMP

DOUBLE ROD (MAGNETIC) DOUBLE ACTING



SERIE

F



DIMENSIONI - DIMENSIONS

	016	020	025	032	040	050	063	080	100
Ø	016	020	025	032	040	050	063	080	100
A	34	40	44,5	51	58	70	89	105	131
B	30	36	40	46	55	65	80	100	124
Ø D	8	10	10	12	12	16	16	20	25
D1	M4	M5	M5	M6	M6	M8	M8	M10	M12
Ø D2	-	-	-	24,5	28	34	38,5	44	56
Ø D3	**	5,8	5,8	5,8	5,8	6,8	9	9	11
Ø D4	**	9	9	9	9	11	14	14	17,2
E	19	22	24,5	27	30,5	37,5	46	55	69
G	M5	M5	G1/8	G1/8	G1/8	G1/8	G1/8	G1/4	G1/4
H+	32*	32*	38,5*	39,5	39,5	39,5	42	46	56
H3	8	8	10,5	11,5	11	11,5	11	14	16
I1	-	-	-	36	42	50	62	82	103
I2	18	20	26	32	42	50	62	82	103
I3	12	15	15,5	-	-	-	-	-	-
I5	20	25,5	28	34	40	50	60	77	94
I6	10	12,7	14	-	-	-	-	-	-
K	6	8	8	10	10	13	13	17	22
L	4,6	5,7	5,7	5,7	5,7	6,8	8,8	9	11
L1	3,5	5,7	5,7	-	-	-	-	-	-
N	32	38,5	42	48	55	65	80	100	124
P	11	12	12	15	15	17	17	17	22
S	-	-	-	5	6	6	8	10	10,5
W	4,5	4,5	5,5	11	12,5	13,5	15	18	20,5
W+	4,5	4,5	5,5	11	12,5	13,5	15	18	20,5

+ = aggiungere lunghezza corsa (mm) - add stroke length (mm)

* per corse - for strokes >= 025:

Ø 016-020 aggiungere - add +6 mm

Ø 025 aggiungere - add +1 mm

** vedi quote pag.121 - see dimensions page 121

CORSE STANDARD - STANDARD STROKES

Ø	016	020	025	032	040	050	063	080	100
005	x	x	x	x	x				
010	x	x	x	x	x	x	x	x	x
015	x	x	x	x	x	x	x	x	x
020	x	x	x	x	x	x	x	x	x
025	x	x	x	x	x	x	x	x	x
030	x	x	x	x	x	x	x	x	x
040	x	x	x	x	x	x	x	x	x
050	x	x	x	x	x	x	x	x	x
060	x	x	x	x	x	x	x	x	x
080	x	x	x	x	x	x	x	x	x
100	x	x	x	x	x	x	x	x	x
125		x	x	x	x	x	x	x	x
160				x	x	x	x	x	x
200						x	x	x	x
250								x	x