

SERIE

K

CILINDRI COMPATTI
COMPACT CYLINDERS

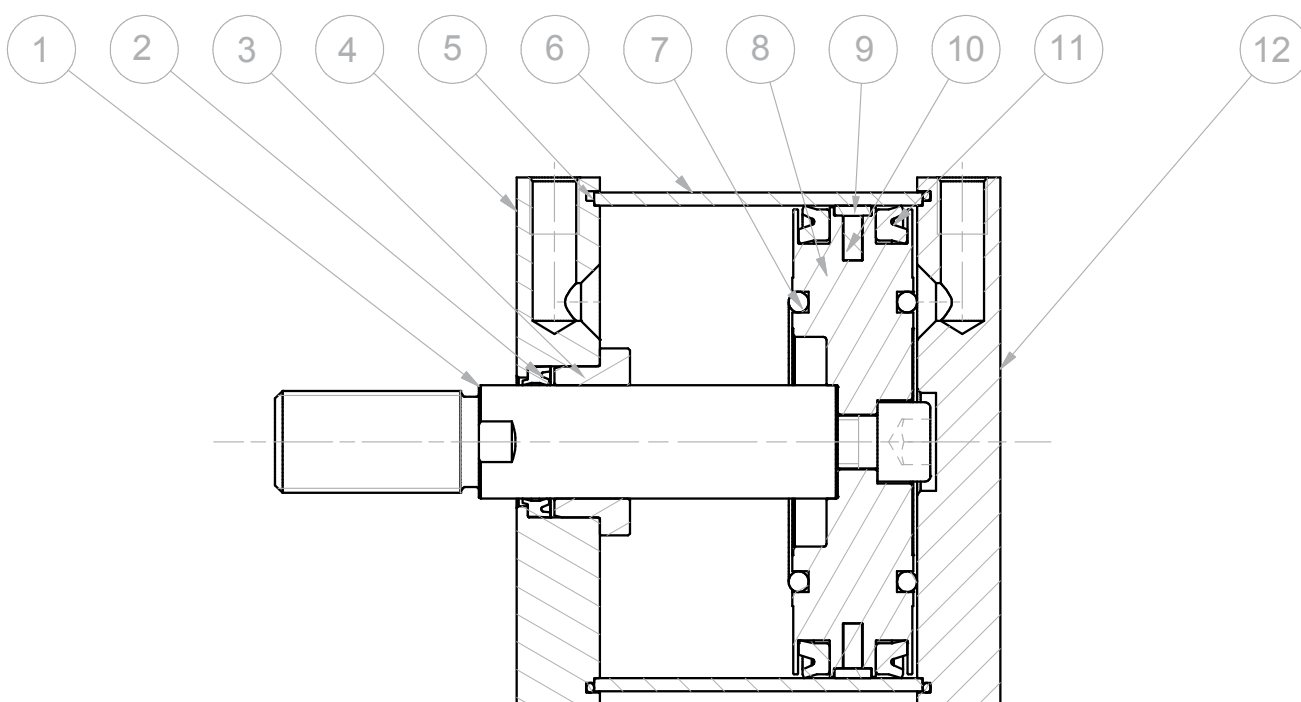

ARTEC[®]
PNEUMATIC COMPONENTS

CARATTERISTICHE TECNICHE - TECHNICAL CHARACTERISTICS

Pressione di esercizio <i>Working pressure</i>	1 ÷ 10 bar (doppio effetto - <i>double acting</i>) 2 ÷ 10 bar (semplice effetto - <i>single acting</i>)
Temperatura di esercizio <i>Working temperature</i>	0 ÷ +80°C (-20°C con aria secca - <i>with dry air</i>) 0 ÷ +150°C (con guarnizioni per alte temperature - <i>with high temperature seals</i>)
Versioni - Versions	semplice effetto (molla anteriore) - doppio effetto - antirotazione - stelo passante <i>single acting (front spring) - double acting - anti-rotation - double rod</i>
Alesaggi - Bores	Ø 125 - 160 - 200 - 250
Corse - Strokes	vedere tabelle corse standard - <i>see standard stroke tables</i>
Fluidi - Fluid	aria compressa, filtrata, non lubrificata - <i>compressed air, filtered, no lubrication</i>

CARATTERISTICHE COSTRUTTIVE - CONSTRUCTIVE CHARACTERISTICS

①	Stelo - Rod	acciaio inox AISI 303 - <i>stainless steel AISI 303</i>
② ⑪	Guarnizioni - Seals	poliuretano - <i>polyurethane</i>
③	Boccola - Bush	ottone - <i>brass</i>
④ ⑫	Testate - Covers	alluminio anodizzato - <i>anodized aluminium</i>
⑤	O-ring	nbr
⑥	Tube - Tube	alluminio anodizzato - <i>anodized aluminium</i>
⑦	Paracolpo - Bumper	nbr
⑧	Pistone - Piston	alluminio - <i>aluminium</i>
⑨	Fascia di guida - Guide ring	PBT+PTFE
⑩	Magnete - Magnet	plastoferrite - <i>rubber magnet</i>
	Tiranti - Tie rods	acciaio - <i>steel</i>
	Viti - Screws	acciaio - <i>steel</i>
	Molla - Spring	acciaio - <i>steel</i>



CHIAVE DI CODIFICA

KEY CODE

K	D	M	2	0	0	.	1	0	0	.	G	S	.	F
			ALESAGGIO - BORE (Ø)		CORSA - STROKE (mm)			STELO - ROD						
			125 - 160 - 200 - 250		vedere tabelle corse std see std stroke tables			F femmina female M maschio male						
			VERSIONE - VERSION					GUARNIZIONI - SEALS						
			P stelo passante double rod A con staffa antirotazione with anti-rotation bracket					GS guarnizioni standard standard seals VR guarnizione stelo per alte temperature high temperature rod seal VA tutte le guarnizioni per alte temperature all seals for high temperature						
			VERSIONE - VERSION											
			M magnetico magnetic non magnetico non-magnetic											
			VERSIONE - VERSION											
			S semplice effetto molla anteriore single acting front spring D doppio effetto double acting											
			SERIE - SERIES											
			K tubo tondo con tiranti round tube with tie rods											

Cilindri tandem vedi pagina 146
Tandem cylinders see page 146

SERIE
K

ESECUZIONI A RICHIESTA - ON REQUEST

Stelo forato - *Hollow rod*

Stelo prolungato (W) - *Extended rod (W)*

Filetti speciali (dado stelo non fornito) - *Special thread (without rod nut)*

FORZE TEORICHE DI TRAZIONE (P=6bar)

THEORETICAL FORCES OF TRACTION (P=6bar)

		Ø	125	160	200	250
KD - KDM	SPINTA THRUST	[N]	7.280	11.960	18.720	29.350
	TRAZIONE TRACTION	[N]	6.880	11.200	17.960	28.600
KDP - KDMP	SPINTA THRUST	[N]	6.880	11.200	17.960	28.600
	TRAZIONE TRACTION	[N]	6.880	11.200	17.960	28.600

DIAGRAMMA CARICO AMMISSIBILE

KS

KSM

KD

KDM

APPLICABLE LOAD

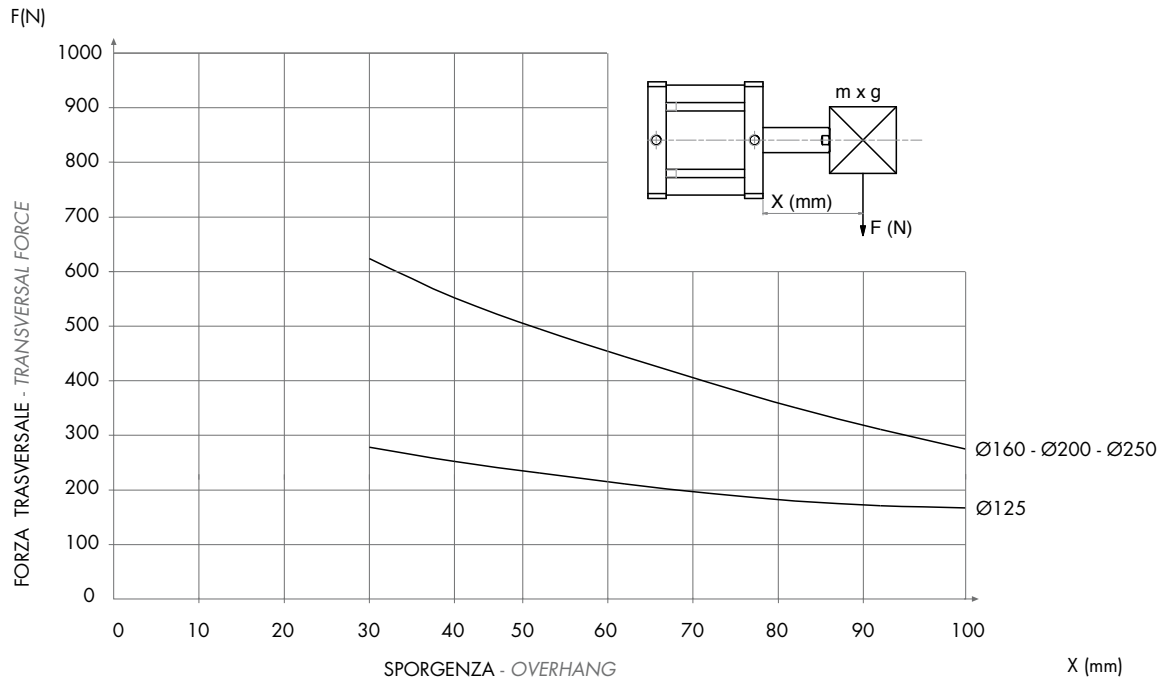


DIAGRAMMA CARICO AMMISSIBILE

KDA

KDMA

SERIE
K

APPLICABLE LOAD

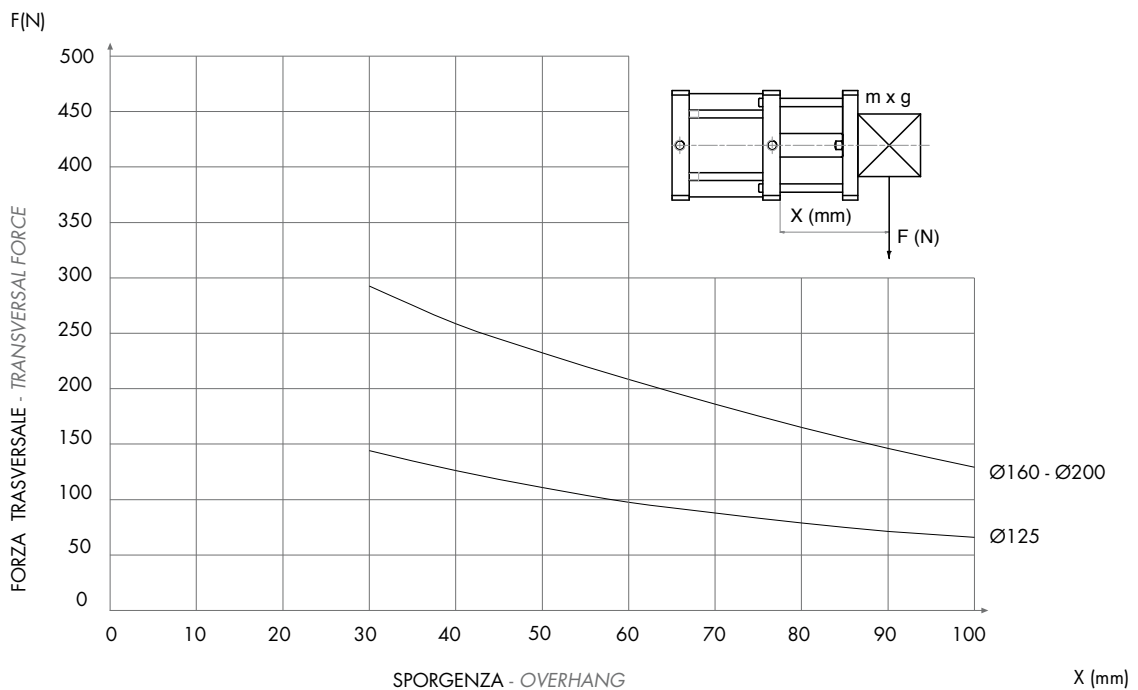


DIAGRAMMA CARICO AMMISSIBILE

KDA

KDMA

APPLICABLE LOAD

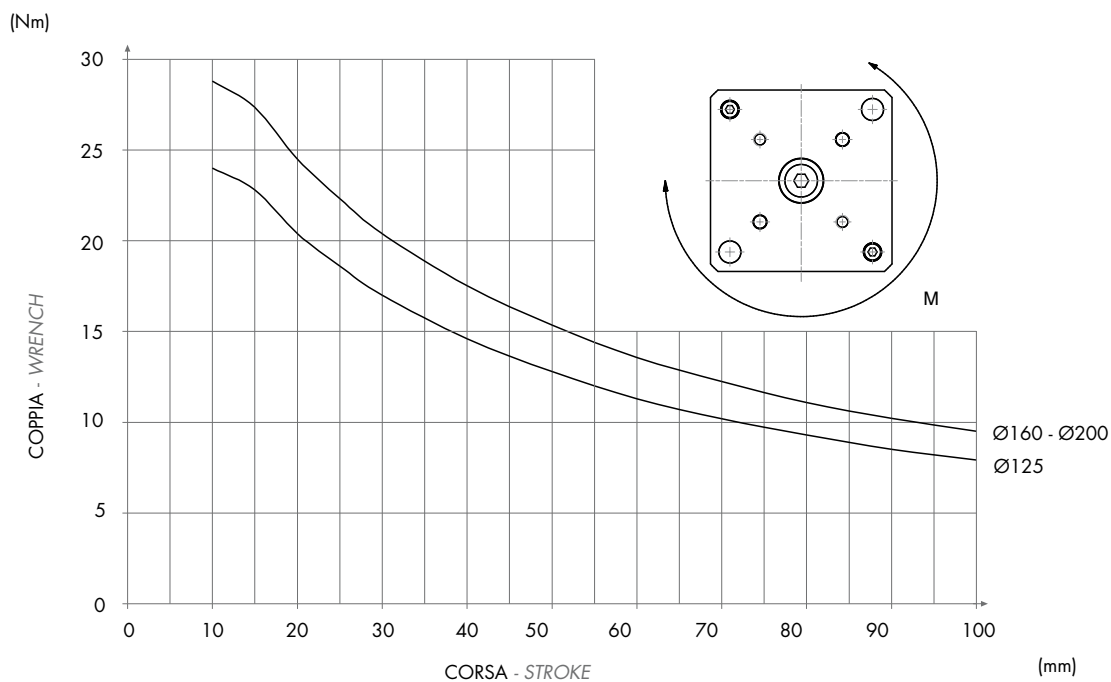
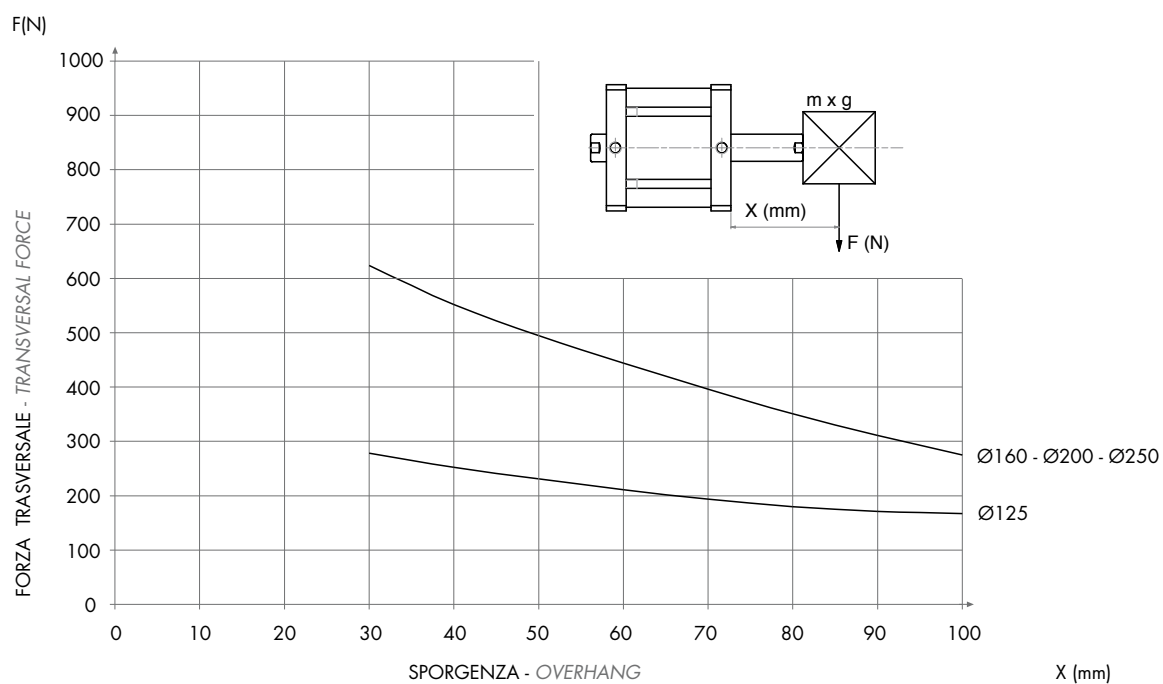


DIAGRAMMA CARICO AMMISSIBILE

KDP

KDMP

APPLICABLE LOAD



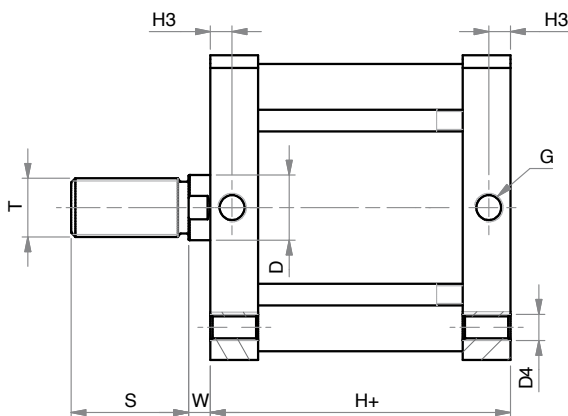
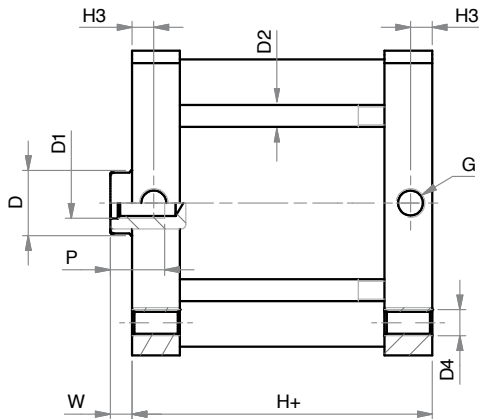
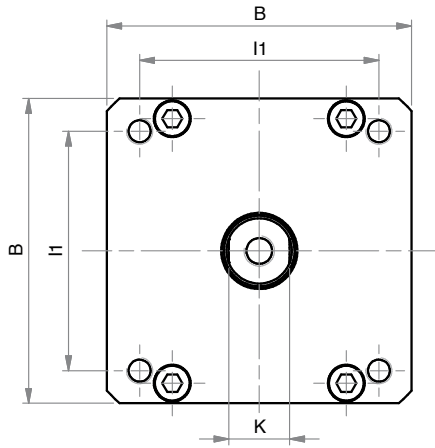
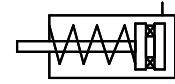
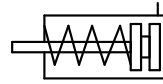
SERIE

K

SEMPLICE EFFETTO (MAGNETICO) - MOLLA ANTERIORE
(MAGNETIC) SINGLE ACTING - FRONT SPRING

KS

KSM



DIMENSIONI - DIMENSIONS

Ø	125	160	200
B	140	180	220
ø D	30	40	40
D1	M14	M20	M20
ø D2	10	12	14
D4	M12	M16	M16
G	G1/4	G3/8	G3/8
H+	78	87	87
H+ viton	83	91	105
H3	10	12	12
I1	110	140	175
K	28	36	36
P	25	30	30
S	54	72	72
T	M27x2	M36x2	M36x2
W	10	12	12

+ = aggiungere lunghezza corsa (mm) - add stroke length (mm)

CORSE STANDARD - STANDARD STROKES

Ø	125	160	200
010	x	x	x
025	x	x	x
050	x	x	x

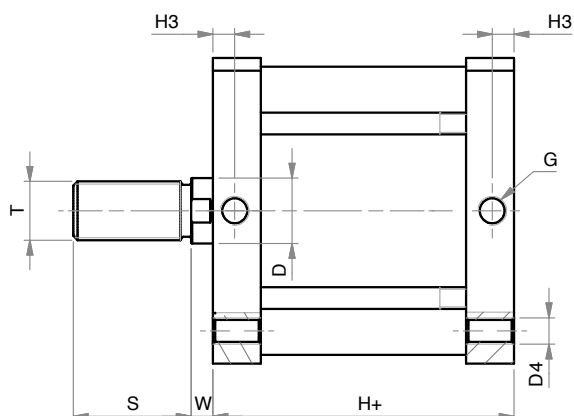
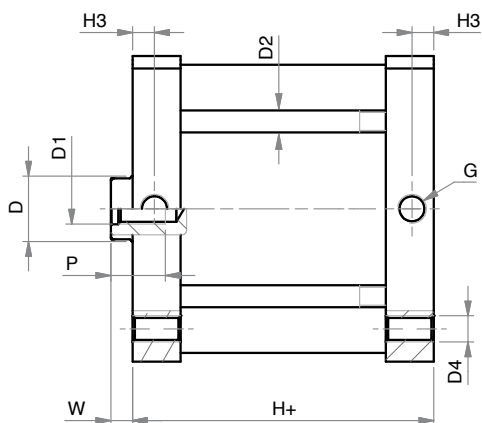
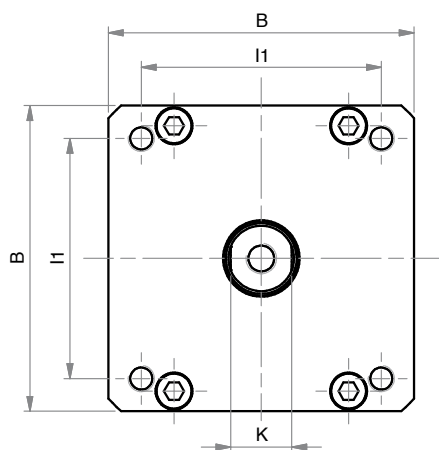
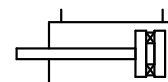
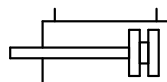
SERIE
K

DOPPIO EFFETTO (MAGNETICO)

(MAGNETIC) DOUBLE ACTING

KD

KDM



DIMENSIONI - DIMENSIONS

\emptyset	125	160	200	250
B	140	180	220	270
$\emptyset D$	30	40	40	40
D1	M14	M20	M20	M24
$\emptyset D2$	10	12	14	16
D4	M12	M16	M16	M20
G	G1/4	G3/8	G3/8	G1/2
H+	78	87	87	116
H + viton	83	91	105	116
H3	10	12	12	15
I1	110	140	175	220
K	28	36	36	36
P	25	30	30	35
S	54	72	72	72
T	M27x2	M36x2	M36x2	M36x2
W	10	12	12	12

+ = aggiungere lunghezza corsa (mm) - add stroke length (mm)

CORSE STANDARD - STANDARD STROKES

\emptyset	125	160	200	250
010	x	x	x	x
025	x	x	x	x
050	x	x	x	x
075	x	x	x	x
100	x	x	x	x
125	x	x	x	x
160	x	x	x	x
200	x	x	x	x
250	x	x	x	x
300	x	x	x	x

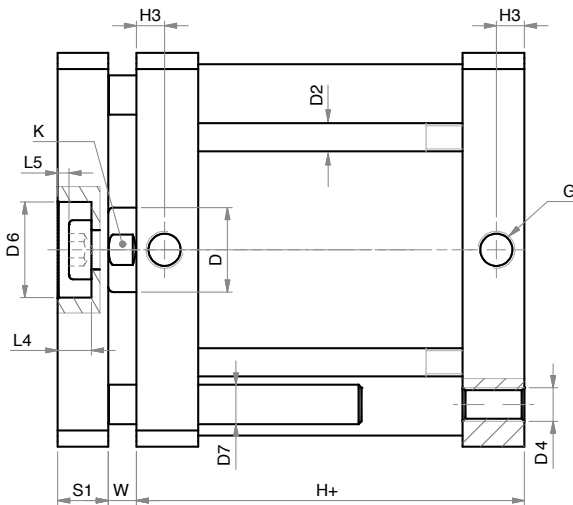
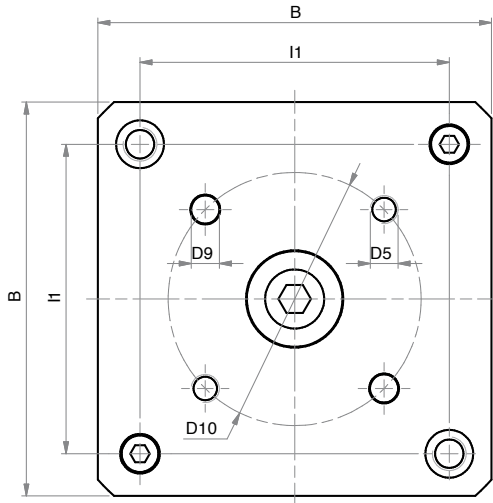
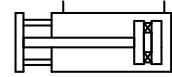
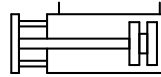
SERIE
K

DOPPIO EFFETTO (MAGNETICO) ANTIROTAZIONE

ANTI-ROTATION (MAGNETIC) DOUBLE ACTING

KDA

KDMA



DIMENSIONI - DIMENSIONS

Ø	125	160	200
B	140	180	220
ø D	30	40	40
D1	M14	M20	M20
ø D2	10	12	14
D4	M12	M16	M16
D5	M10	M12	M12
ø D6	34	46	46
ø D7	14	20	20
ø D9	10	12	12
ø D10	90	110	110
G	G1/4	G3/8	G3/8
H+	78	87	87
H + viton	83	91	105
H3	10	12	12
I1	110	140	175
K	28	36	36
L4	12	16	16
L5	3	3	3
S1	18	23	23
W	10	12	12

+ = aggiungere lunghezza corsa (mm) - add stroke length (mm)

CORSE STANDARD - STANDARD STROKES

Ø	125	160	200
010	x	x	x
025	x	x	x
050	x	x	x
075	x	x	x
100	x	x	x
125	x	x	x
160	x	x	x
200	x	x	x
250	x	x	x
300	x	x	x

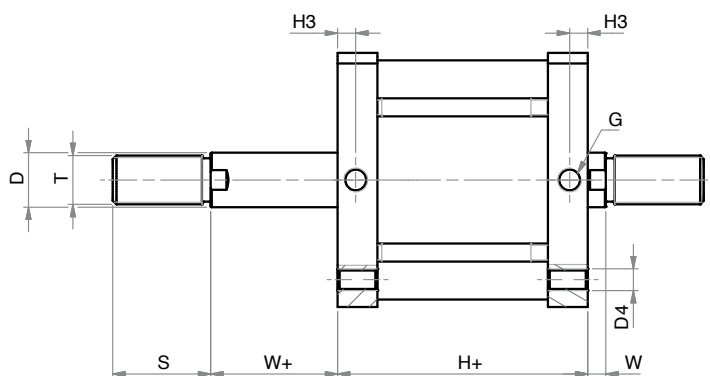
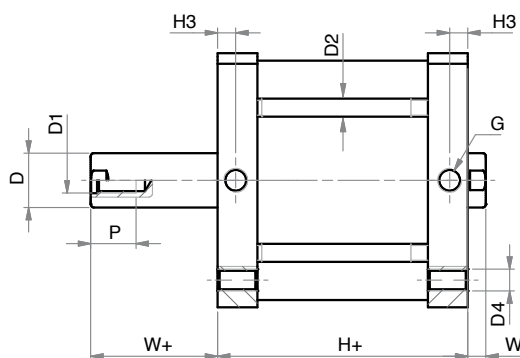
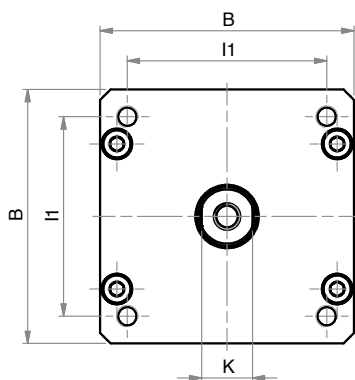
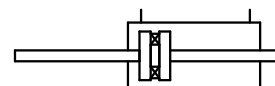
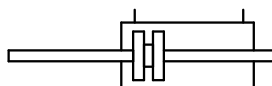
SERIE
K

DOPPIO EFFETTO (MAGNETICO) STELO PASSANTE

DOUBLE ROD (MAGNETIC) DOUBLE ACTING

KDP

KDMP



DIMENSIONI - DIMENSIONS

	125	160	200	250
\emptyset	125	160	200	250
B	140	180	220	270
$\emptyset D$	30	40	40	40
D1	M14	M20	M20	M24
$\emptyset D2$	10	12	14	16
D4	M12	M16	M16	M20
G	G1/4	G3/8	G3/8	G1/2
H+	78	87	87	116
H + viton	83	91	105	116
H3	10	12	12	15
I1	110	140	175	220
K	28	36	36	36
P	25	30	30	35
S	54	72	72	72
T	M27x2	M36x2	M36x2	M36x2
W	10	12	12	12
W+	10	12	12	12

+ = aggiungere lunghezza corsa (mm) - add stroke length (mm)

CORSE STANDARD - STANDARD STROKES

\emptyset	125	160	200	250
010	x	x	x	x
025	x	x	x	x
050	x	x	x	x
075	x	x	x	x
100	x	x	x	x
125	x	x	x	x
160	x	x	x	x
200	x	x	x	x
250	x	x	x	x
300	x	x	x	x

SERIE
K

CILINDRI TANDEM - TANDEM CYLINDERS

CHIAVE DI CODIFICA - KEY CODE

K T2 M 1 60.0 50.0 G S . M

VERSIONE - VERSION

- T2** tandem doppia spinta
double thrust tandem
- T3** tandem tripla spinta
3 x force
- T4** tandem quadrupla spinta
4 x force

K C M 1 2 5 . 0 50 . 1 00 . G S . F

ALESAGGIO - BORE (Ø)
125 - 160 - 200 - 250

I° CORSA (mm)
I° STROKE (mm)
vedere tabelle corse std
see std stroke tables

II° CORSA (mm)
II° STROKE (mm)
vedere tabelle corse std
see std stroke tables

STELO - ROD

- F** femmina
female
- M** maschio
male

VERSIONE - VERSION

- M** magnetico
magnetic
- non magnetico
non-magnetic

VERSIONE - VERSION

- P** tandem più posizioni doppio effetto
multi-position double acting tandem
- C** tandem contrapposti posteriori doppio effetto
rear opposed double acting tandem

GUARNIZIONI - SEALS

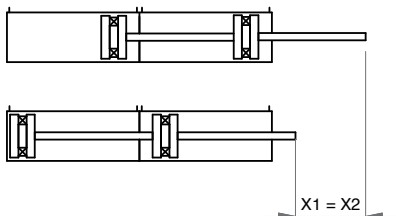
- GS** guarnizioni standard
standard seals
- VR** guarnizione stelo per alte temperature
high temperature rod seal
- VA** tutte le guarnizioni per alte temperature
all seals for high temperature

SERIE - SERIES

- K** tubo tondo con tiranti
round tube with tie rods

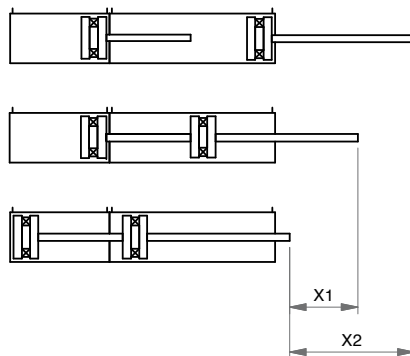
SERIE
K

DOPPIA SPINTA - DOUBLE THRUST

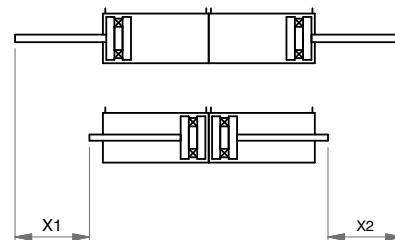


X1 = 1° corsa - 1° stroke
X2 = 2° corsa - 2° stroke

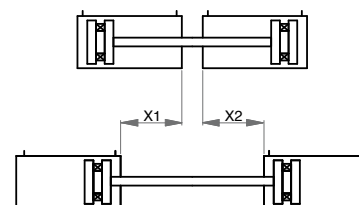
PIÙ POSIZIONI - MULTI-POSITIONS



CONTRAPPOSTI POSTERIORI - REAR OPPOSED



CONTRAPPOSTI ANTERIORI - FRONT OPPOSED

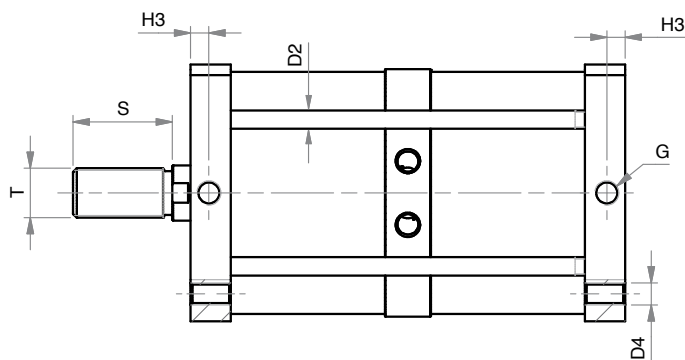
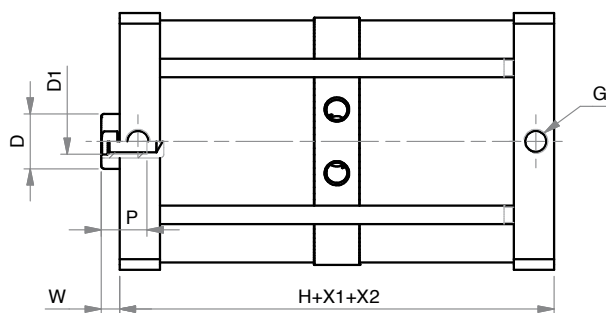
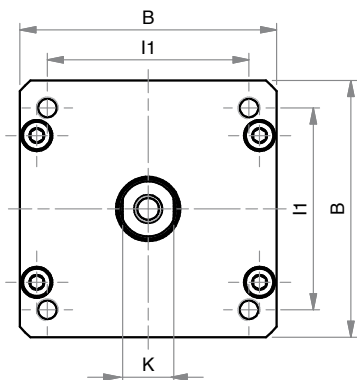
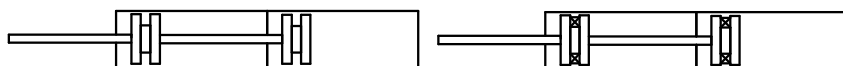


TANDEM DOPPIA SPINTA

DOUBLE THRUST TANDEM

KT

KTM



DIMENSIONI - DIMENSIONS

\emptyset	125	160	200	250
B	140	180	220	270
$\emptyset D$	30	40	40	40
D1	M14	M20	M20	M24
$\emptyset D2$	10	12	14	M16
D4	M12	M16	M16	M20
G	G1/4	G3/8	G3/8	G1/2
H	137	150	150	202
H viton	147	158	186	202
H3	10	12	12	15
I1	110	140	175	220
K	28	36	36	36
P	25	30	30	35
S	54	72	72	72
T	M27x2	M36x2	M36x2	M36x2
W	10	12	12	12
X1	I° CORSA I° STROKE	I° CORSA I° STROKE	I° CORSA I° STROKE	I° CORSA I° STROKE
X2	II° CORSA II° STROKE	II° CORSA II° STROKE	II° CORSA II° STROKE	II° CORSA II° STROKE

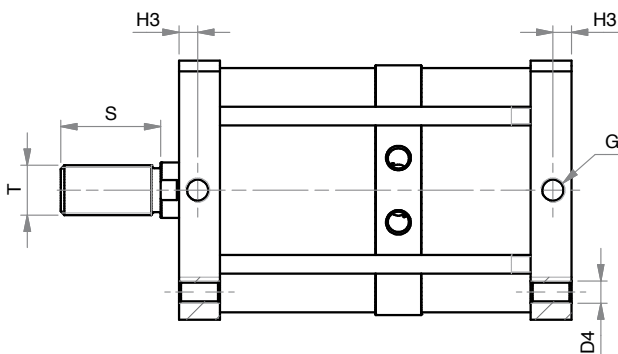
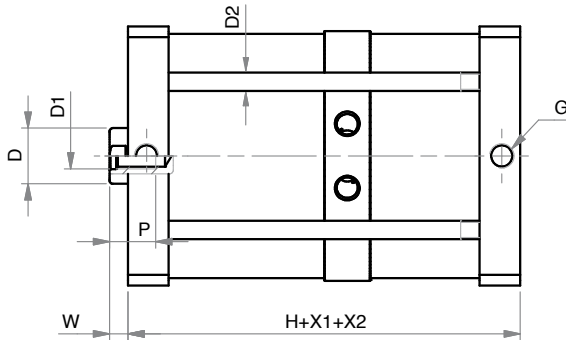
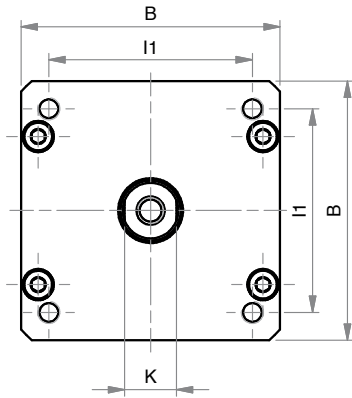
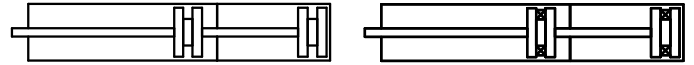
SERIE
K

TANDEM PIÙ POSIZIONI

MULTI-POSITION TANDEM

KP

KPM



DIMENSIONI - DIMENSIONS

Ø	125	160	200	250
B	140	180	220	270
ø D	30	40	40	40
D1	M14	M20	M20	M24
ø D2	10	12	14	M16
D4	M12	M16	M16	M20
G	G1/4	G3/8	G3/8	G1/2
H	137	150	150	202
H viton	147	158	186	202
H3	10	12	12	15
I1	110	140	175	220
K	28	36	36	36
P	25	30	30	35
S	54	72	72	72
T	M27x2	M36x2	M36x2	M36x2
W	10	12	12	12
X1	I° CORSA I° STROKE	I° CORSA I° STROKE	I° CORSA I° STROKE	I° CORSA I° STROKE
X2	II° CORSA II° STROKE	II° CORSA II° STROKE	II° CORSA II° STROKE	II° CORSA II° STROKE

SERIE

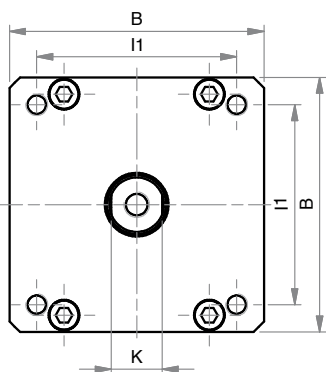
K

TANDEM CONTRAPPOSTI POSTERIORI

REAR OPPOSED TANDEM

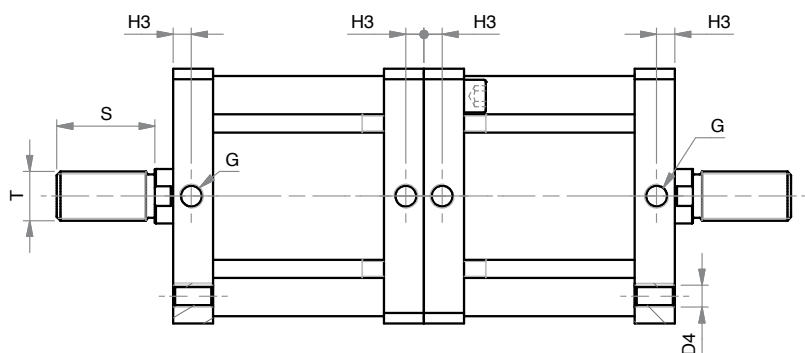
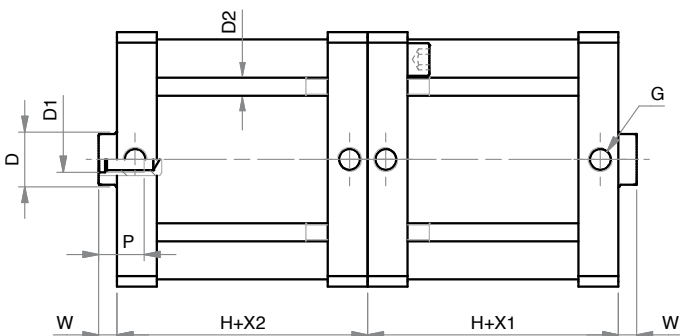
KC

KCM



DIMENSIONI - DIMENSIONS

Ø	125	160	200	250
B	140	180	220	270
Ø D	30	40	40	40
D1	M14	M20	M20	M24
Ø D2	10	20	14	M16
D4	M12	M16	M16	M20
G	G1/4	G3/8	G3/8	G1/2
H	78	87	87	116
H viton	83	91	105	116
H3	10	12	12	15
I1	110	140	175	220
K	28	36	36	36
P	25	30	30	35
S	54	72	72	72
T	M27x2	M36x2	M36x2	M36,2
W	10	12	12	12
X1	I° CORSA I° STROKE	I° CORSA I° STROKE	I° CORSA I° STROKE	I° CORSA I° STROKE
X2	II° CORSA II° STROKE	II° CORSA II° STROKE	II° CORSA II° STROKE	II° CORSA II° STROKE



SERIE

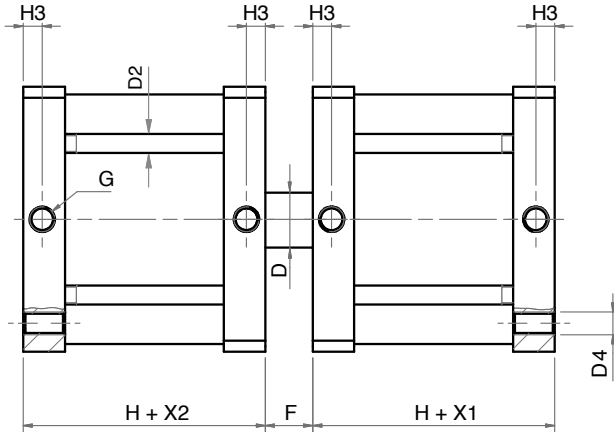
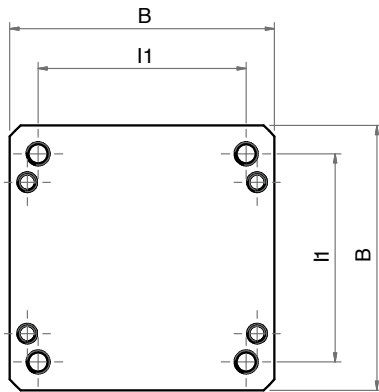
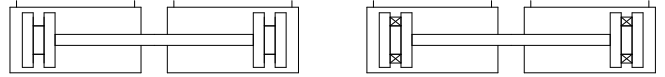
K

TANDEM CONTRAPPOSTI ANTERIORI

FRONT OPPOSED TANDEM

KF

KFM



DIMENSIONI - DIMENSIONS

\emptyset	125	160	200	250
B	140	180	220	270
$\emptyset D$	30	40	40	40
$\emptyset D2$	10	12	14	M16
D4	M12	M16	M16	M20
F	20	24	24	24
G	G1/4	G3/8	G3/8	G1/2
H	137	150	150	202
H viton	83	91	105	202
H3	10	12	12	15
I1	110	140	175	220
X1	I° CORSA I° STROKE	I° CORSA I° STROKE	I° CORSA I° STROKE	I° CORSA I° STROKE
X2	II° CORSA II° STROKE	II° CORSA II° STROKE	II° CORSA II° STROKE	II° CORSA II° STROKE

SERIE
K