

SERIE

**ST**

**CILINDRI STOPPER**  
**STOPPER CYLINDERS**

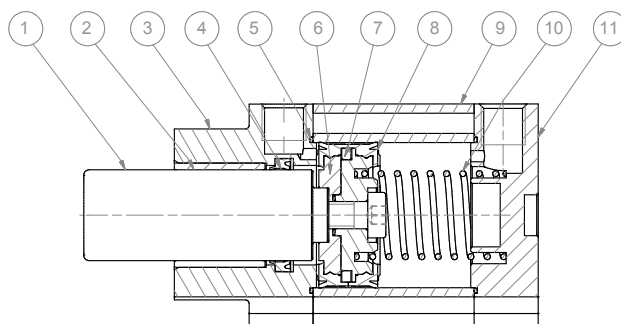
  
**ARTEC**<sup>®</sup>  
PNEUMATIC COMPONENTS

## CARATTERISTICHE TECNICHE - TECHNICAL CHARACTERISTICS

<b>Pressione di esercizio</b> <i>Working pressure</i>	2 ÷ 10 bar (semplice effetto - <i>single acting</i> )
<b>Temperatura di esercizio</b> <i>Working temperature</i>	0 ÷ +80 °C (-20 °C con aria secca - <i>with dry air</i> )
<b>Versioni - Versions</b>	semplice effetto molla posteriore - <i>single acting rear spring</i>
<b>Alesaggi - Bores</b>	Ø 20 - 32 - 50 - 80
<b>Corse - Strokes</b>	15 - 20 - 30
<b>Fluido - Fluid</b>	aria compressa, filtrata, non lubrificata - <i>compressed air, filtered, no lubrication</i>

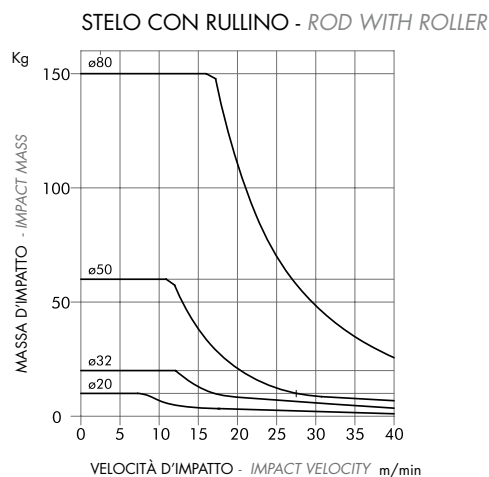
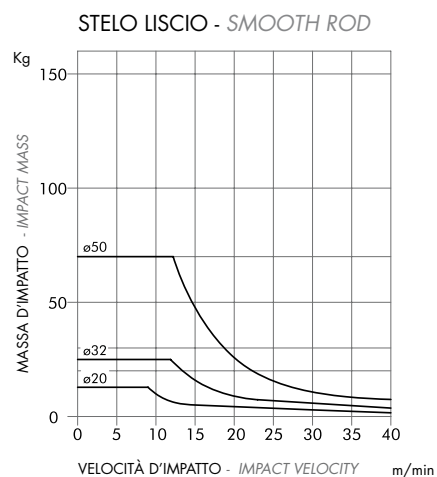
## CARATTERISTICHE COSTRUTTIVE - CONSTRUCTIVE CHARACTERISTICS

①	<b>Stelo - Rod</b>	acciaio inox cromato - <i>chromed stainless steel</i>
②	<b>Boccola - Bush</b>	acciaio+PTFE - <i>steel+PTFE</i>
③ ⑪	<b>Testate - Covers</b>	alluminio anodizzato - <i>anodized aluminium</i>
④ ⑧	<b>Guarnizioni - Seals</b>	poliuretano - <i>polyurethane</i>
⑤	<b>O-ring</b>	nbr
⑥	<b>Pistone - Piston</b>	alluminio - <i>aluminium</i>
⑦	<b>Magnete - Magnet</b>	plastoferrite - <i>rubber magnet</i>
⑨	<b>Tubo - Tube</b>	alluminio anodizzato - <i>anodized aluminium</i>
⑩	<b>Molla - Spring</b>	acciaio - <i>steel</i>
	<b>Viti - Screws</b>	acciaio zincato - <i>zinc coated steel</i>
	<b>Paracolpo - Bumper</b>	poliuretano - <i>polyurethane</i>



## DIAGRAMMA CARICO AMMISSIBILE

### APPLICABLE LOAD



## CHIAVE DI CODIFICA

### KEY CODE

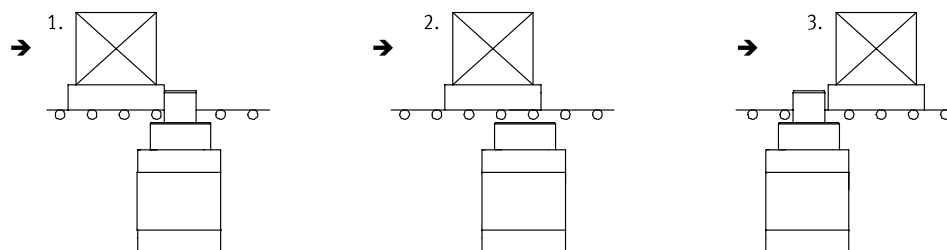
<b>P</b>		<b>S</b>		<b>T</b>		<b>050</b>		<b>.030</b>		<b>.GS</b>		<b>.L</b>	
		<b>ALESAGGIO - BORE (Ø)</b>		<b>CORSA - STROKE (mm)</b>						<b>STELO - ROD</b>			
		020		015						L		liscio smooth	
		032		020						R		con rullino with roller	
		050-080		030									
		<b>VERSIONE - VERSION</b>								<b>GUARNIZIONI - SEALS</b>			
		ST		STOPPER semplice effetto magnetico stelo esteso magnetic single acting STOPPER with rear spring						GS		guarnizioni standard standard seals	
		<b>SERIE - SERIES</b>											
<b>ISO 21287</b>	<b>P</b>	tubo profilato con cave per sensori tube with slots for sensors											
<b>UNITOP</b>	<b>A</b>	tubo profilato con cave per sensori tube with slots for sensors											

SERIE  
**ST**

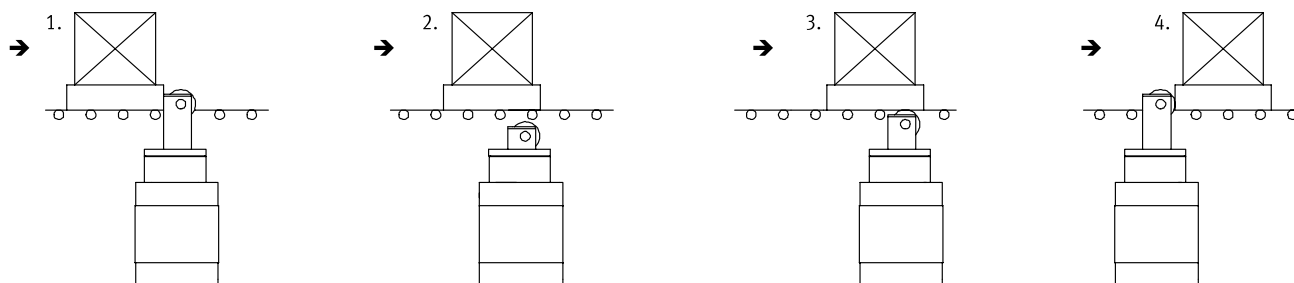
## SCHEMA DI FUNZIONAMENTO

### DIAGRAM OF OPERATION

STELO LISCIO - SMOOTH ROD



STELO CON RULLINO - ROD WITH ROLLER



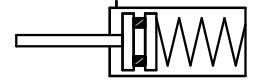
## FORZA TEORICA MOLLA

### SPRING THEORETICAL FORCE

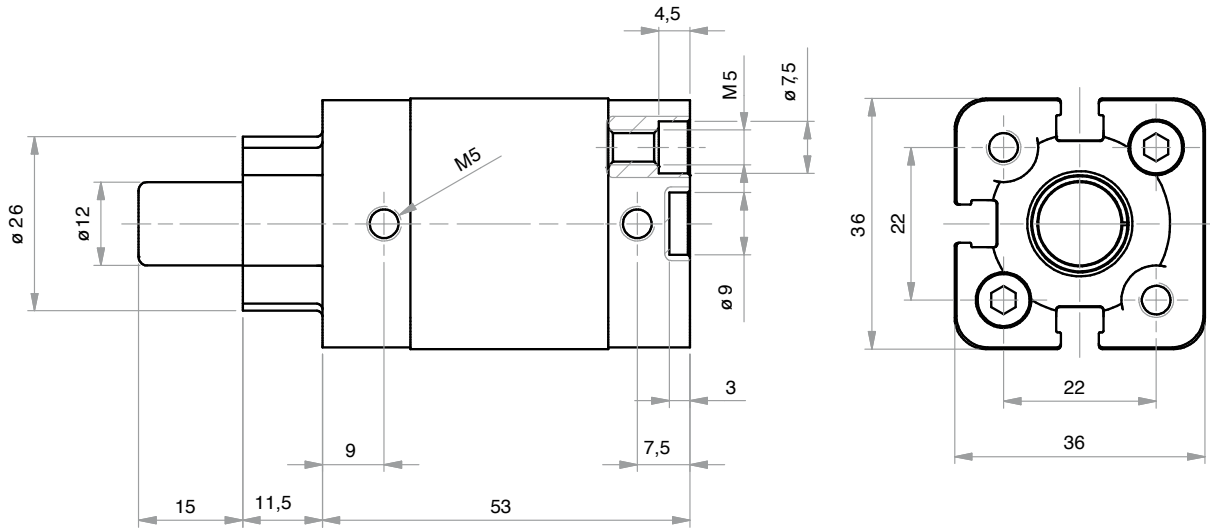
		Ø	020	032	050	080	
AST	PST	CARICO MAX - MAX LOAD	[N]	36	51	78	187
		CARICO MIN - MIN LOAD	[N]	28	36	49	133

**STELO LISCIO**

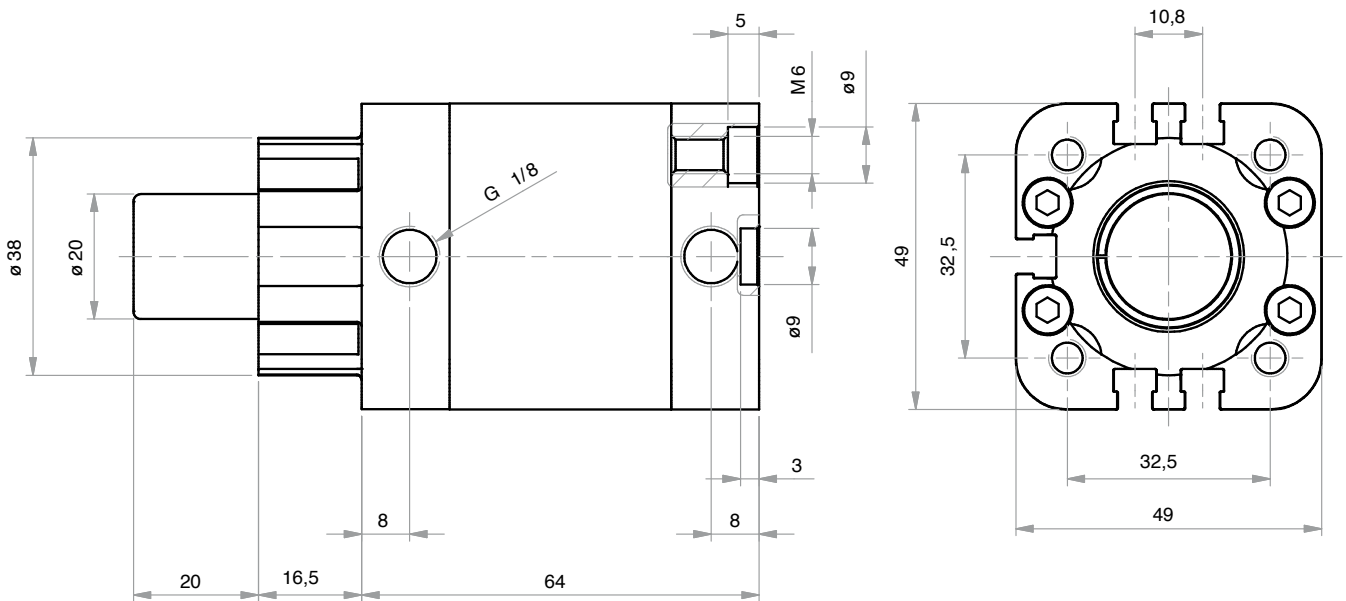
**SMOOTH ROD**



**PST020.015.GS.L**



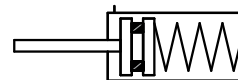
**PST032.020.GS.L**



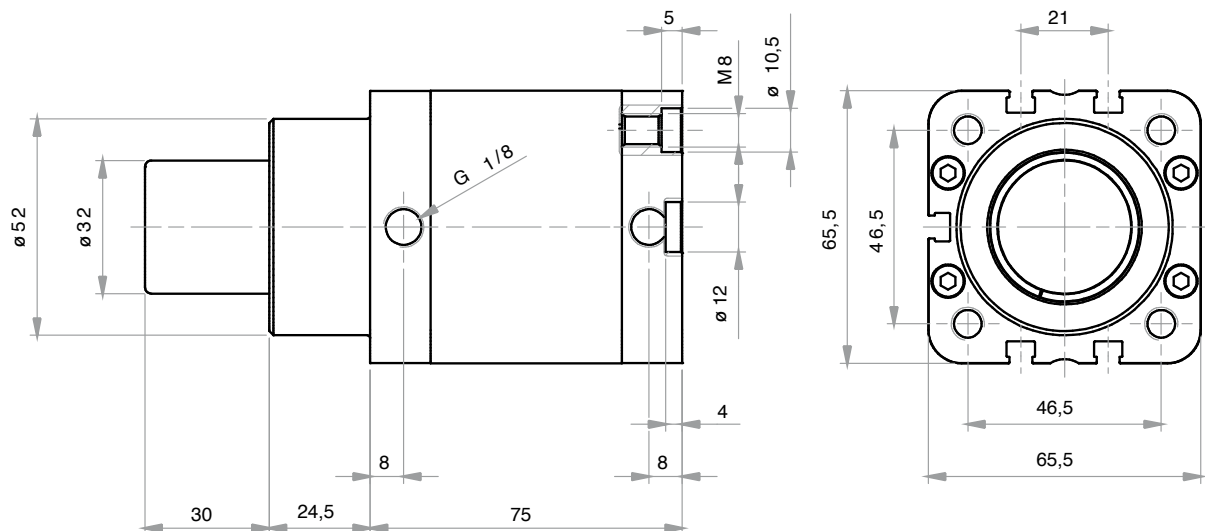
**STELO LISCIO**

PST-L

**SMOOTH ROD**

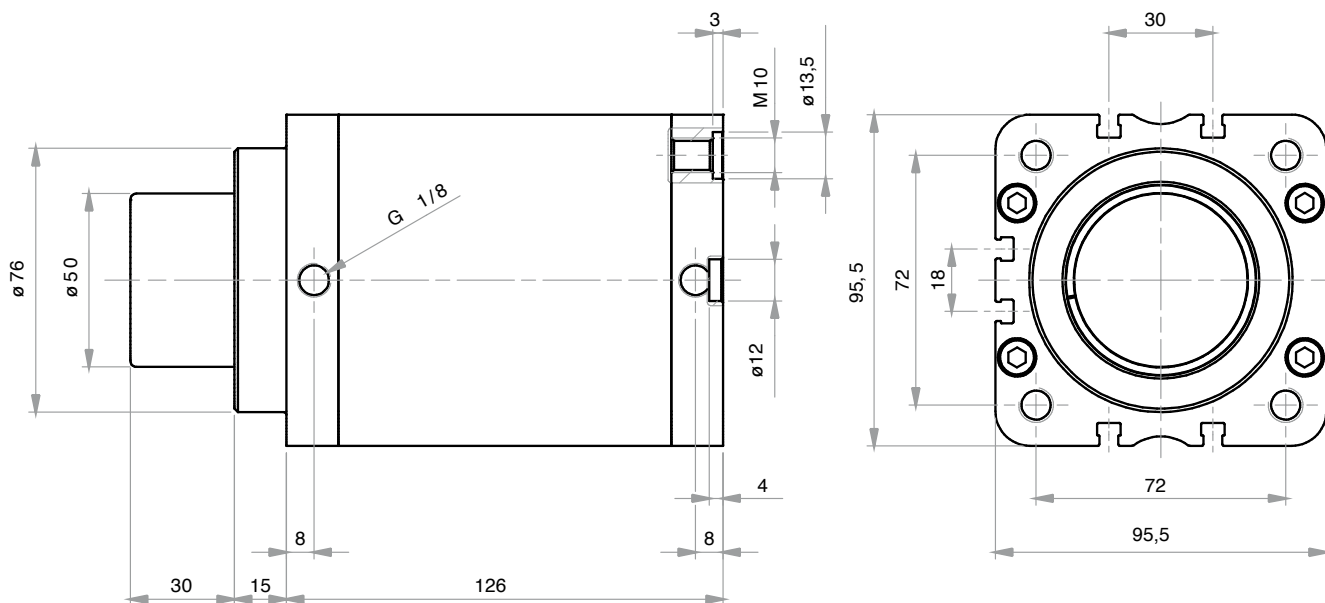


**PST050.030.GS.L**



SERIE  
**ST**

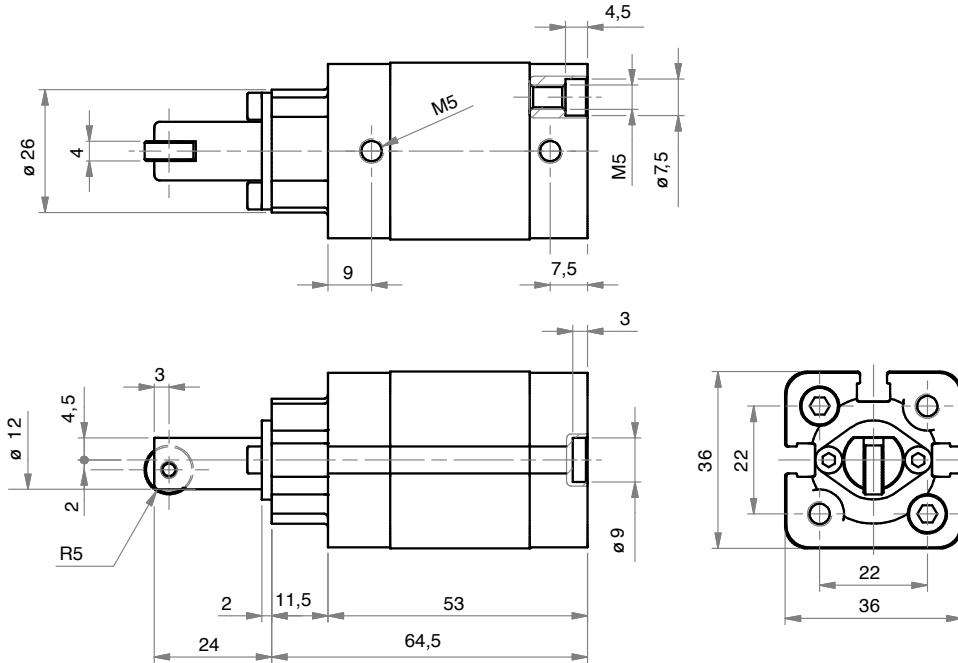
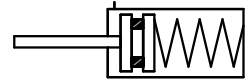
**PST080.030.GS.L**



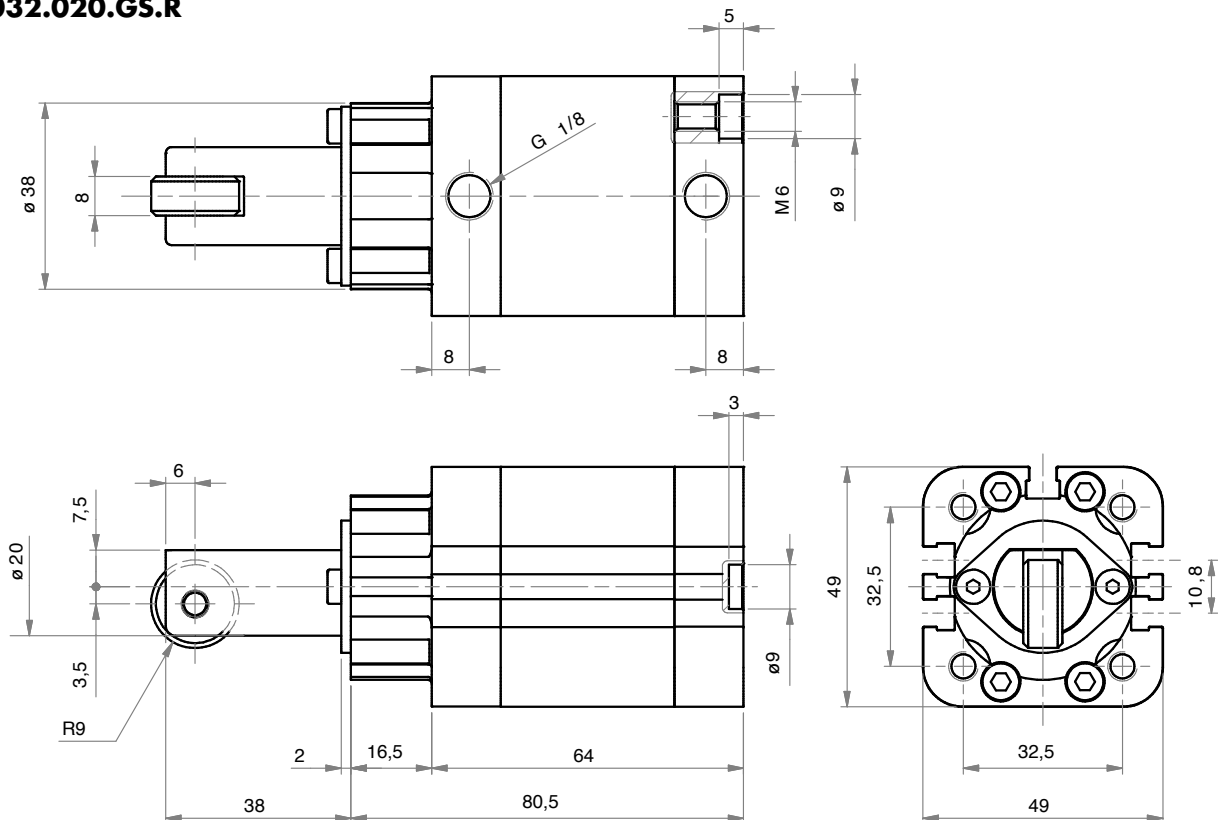
**STELO CON RULLINO**

**ROD WITH ROLLER**

**PST020.015.GS.R**



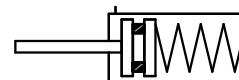
**PST032.020.GS.R**



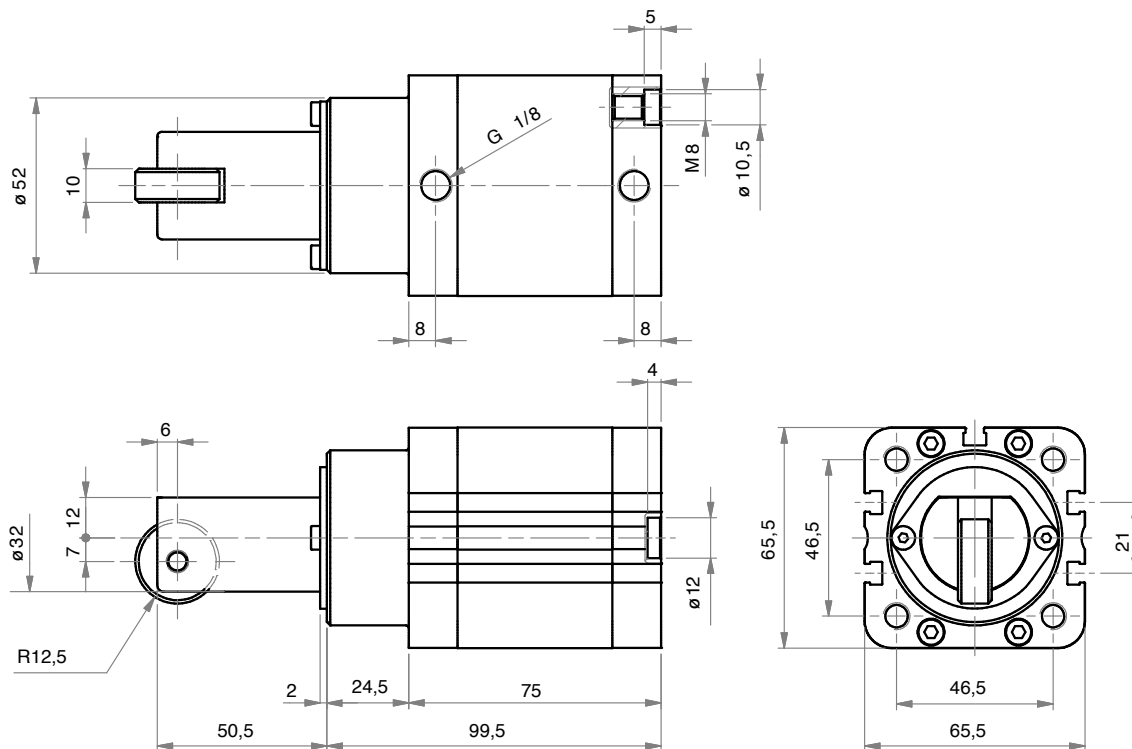
**STELO CON RULLINO**

PST-R

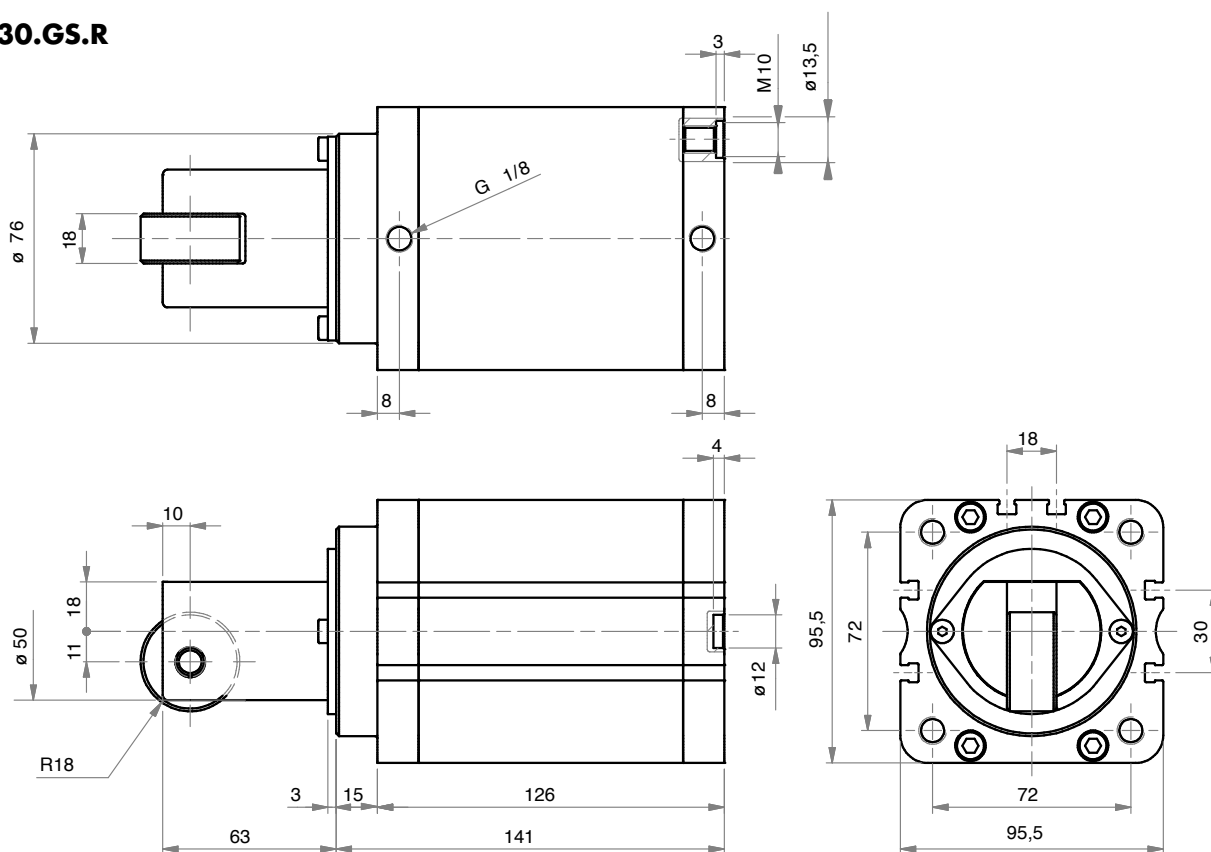
**ROD WITH ROLLER**



**PST050.030.GS.R**



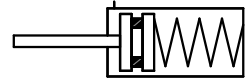
**PST080.030.GS.R**



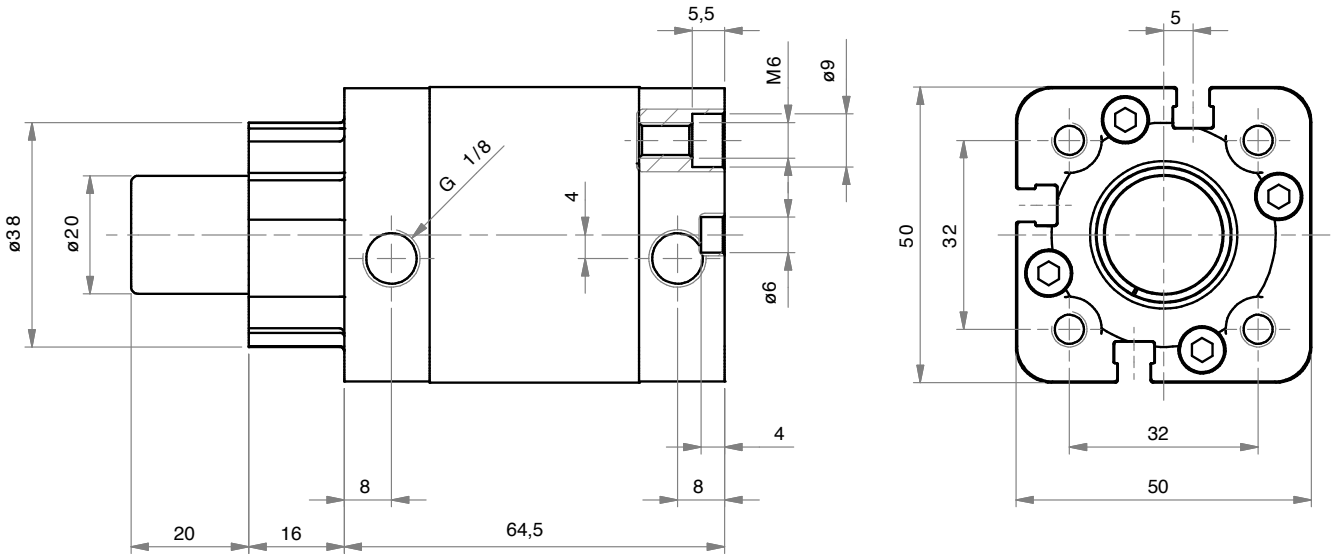
SERIE  
**ST**

**STELO LISCIO**

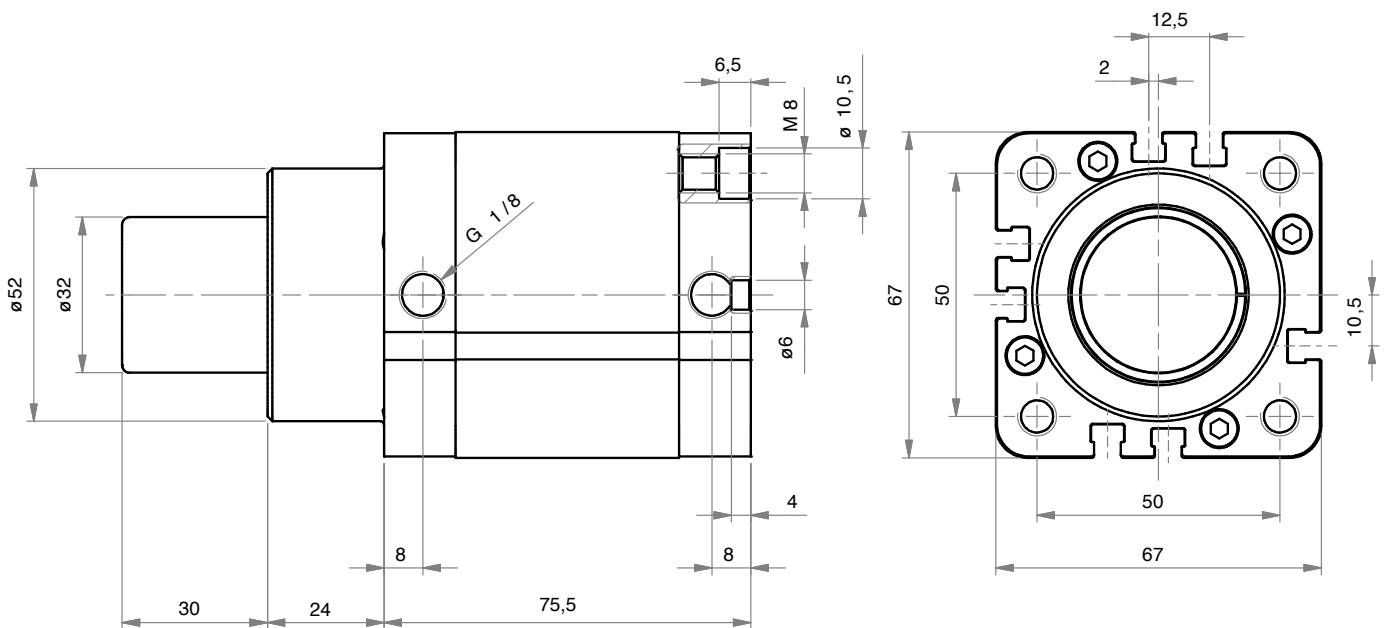
**SMOOTH ROD**



**AST032.020.GS.L**



**AST050.030.GS.L**

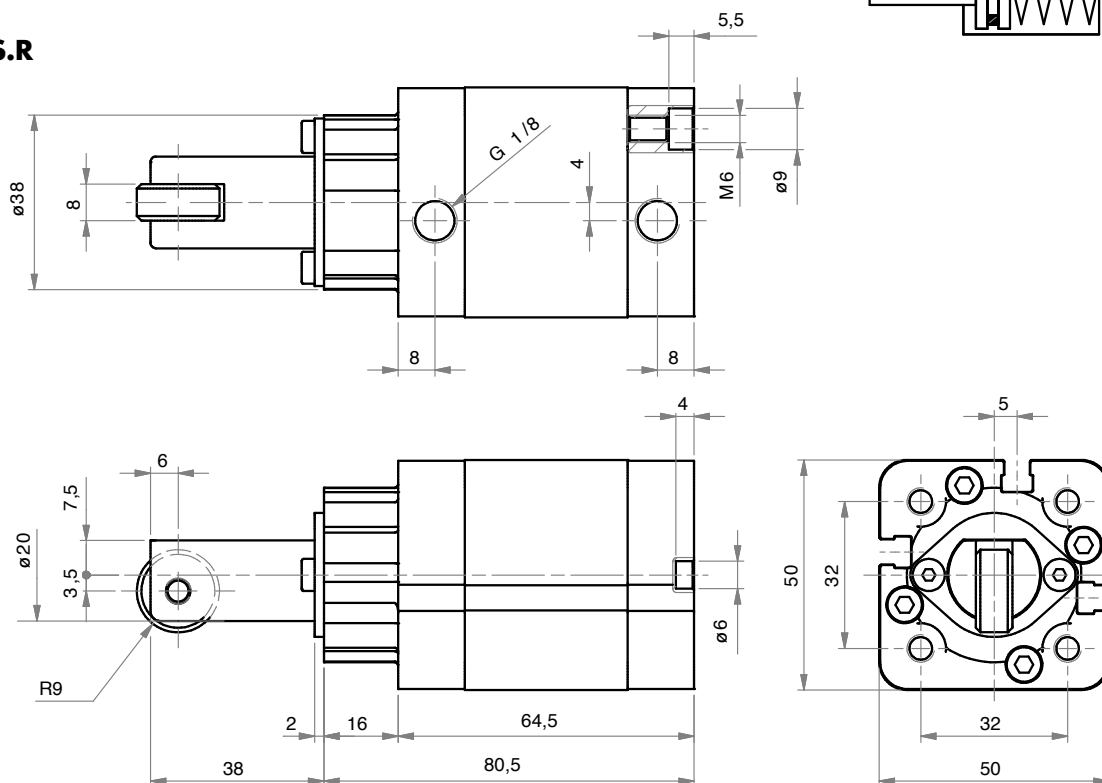
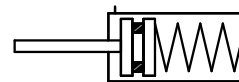




**STELO CON RULLINO**

**ROD WITH ROLLER**

**AST032.020.GS.R**



**AST050.030.GS.R**

