

SERIE

**P**

**CILINDRI COMPATTI ISO 21287**  
**ISO 21287 COMPACT CYLINDERS**

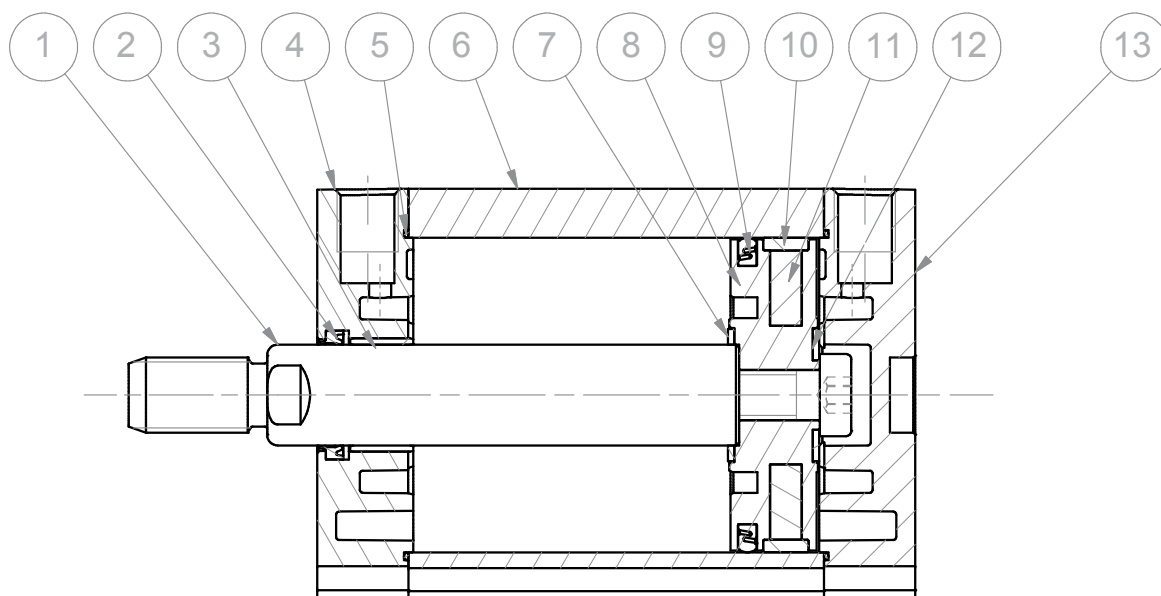
  
**ARTEC**<sup>®</sup>  
PNEUMATIC COMPONENTS

## CARATTERISTICHE TECNICHE - TECHNICAL CHARACTERISTICS

<b>Pressione di esercizio</b> <i>Working pressure</i>	1 ÷ 10 bar (doppio effetto - <i>double acting</i> ) 2 ÷ 10 bar (semplice effetto - <i>single acting</i> )
<b>Temperatura di esercizio</b> <i>Working temperature</i>	0 ÷ +80 °C (-20 °C con aria secca - <i>with dry air</i> ) 0 ÷ +150 °C (con guarnizioni per alte temperature - <i>with high temperature seals</i> )
<b>Versioni - Versions</b>	semplice effetto - doppio effetto - antirotazione - stelo passante - tandem <i>single acting - double acting - anti-rotary - double rod - tandem</i>
<b>Alesaggi - Bores</b>	Ø 20 - 25 - 32 - 40 - 50 - 63 - 80 - 100
<b>Corse - Strokes</b>	vedere tabelle corse standard - <i>see standard stroke tables</i>
<b>Fluido - Fluid</b>	aria compressa, filtrata, non lubrificata - <i>compressed air, filtered, no lubrication</i>

## CARATTERISTICHE COSTRUTTIVE - CONSTRUCTIVE CHARACTERISTICS

①	<b>Stelo - Rod</b>	acciaio inox AISI 303 - <i>stainless steel AISI 303</i>
②	<b>Guarnizione - Seal</b>	poliuretano - <i>polyurethane</i>
③	<b>Boccola - Bush</b>	acciaio+PTFE - <i>steel+PTFE</i>
④ ⑬	<b>Testate - Covers</b>	alluminio pressofuso verniciato - <i>painted die cast aluminium</i>
⑤	<b>O-ring</b>	nbr
⑥	<b>Tubo - Tube</b>	alluminio anodizzato - <i>anodized aluminium</i>
⑦ ⑫	<b>Paracolpo - Bumper</b>	neoprene
⑧	<b>Pistone - Piston</b>	alluminio - <i>aluminium</i>
⑨	<b>Guarnizione - Seal</b>	nbr
⑩	<b>Pattino di guida - Guide ring</b>	PBT+PTFE
⑪	<b>Magnete - Magnet</b>	plastoferrite - <i>rubber magnet</i>
	<b>Viti - Screws</b>	acciaio zincato - <i>zinc coated steel</i>
	<b>Molla - Spring</b>	acciaio - <i>steel</i>



## CHIAVE DI CODIFICA

### KEY CODE

<b>P</b>	<b>D</b>	<b>M</b>			<b>0</b>	<b>5</b>	<b>0</b>	<b>.</b>	<b>0</b>	<b>3</b>	<b>0</b>	<b>.</b>	<b>G</b>	<b>S</b>	<b>.</b>	<b>F</b>
				<b>ALESAGGIO - BORE (Ø)</b>		<b>CORSA - STROKE (mm)</b>				<b>OPZIONE - OPTION</b>						
				020 - 025 - 032 - 040		vedere tabelle corse std see std stroke tables				EX ATEX  II 2GD c T4						
				050 - 063 - 080 - 100												
				<b>VERSIONE - VERSION</b>				<b>STELO - ROD</b>								
				A con staffa antirotazione with anti-rotation bracket				F femmina female								
				<b>VERSIONE - VERSION</b>				M maschio male								
				P stelo passante double rod				<b>OPZIONE - OPTION</b>								
				<b>VERSIONE - VERSION</b>				V femmina female								
				M magnetico magnetic				Z maschio male								
				non magnetico non-magnetic				<b>GUARNIZIONI - SEALS</b>								
				<b>VERSIONE - VERSION</b>				GS guarnizioni standard standard seals								
				S semplice effetto molla anteriore single acting front spring				VR guarnizione stelo per alte temperature high temperature rod seal								
				SE semplice effetto molla posteriore single acting rear spring				VA tutte le guarnizioni per alte temperature all seals for high temperature								
				D doppio effetto double acting												
<b>SERIE - SERIES</b>																
P tubo profilato con cave per sensori tube with slots for sensors								Cilindri tandem vedi pagina 71 Tandem cylinders see page 71								

SERIE  
**P**

### ESECUZIONI A RICHIESTA - ON REQUEST

Stelo forato - Hollow rod

Stelo prolungato (WH) - Extended rod (WH)

Filetti speciali (dado stelo non fornito) - Special thread (without rod nut)

ATEX II 2GD c T4

## FORZE TEORICHE DI TRAZIONE (P=6 bar)

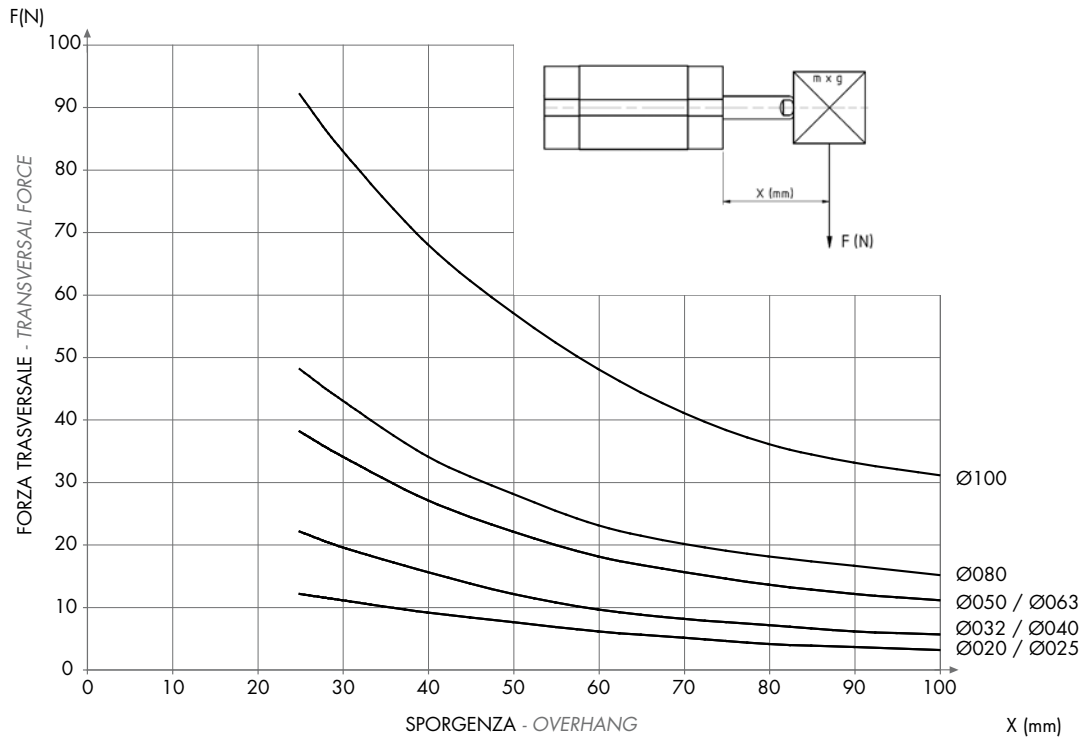
### THEORETICAL FORCES OF TRACTION (P=6 bar)

		Ø	020	025	032	040	050	063	080	100
<b>PDM</b>	SPINTA THRUST [N]		188	295	482	754	1.178	1.869	3.014	4.710
	TRAZIONE TRACTION [N]		142	248	415	687	1.058	1.750	2.829	4.420
<b>PDMA</b>	SPINTA THRUST [N]		188	295	483	754	1.178	1.869	3.014	4.710
	TRAZIONE TRACTION [N]		142	248	415	687	1.058	1.750	2.829	4.420
<b>PDMP</b>	SPINTA THRUST [N]		142	248	415	687	1.058	1.750	2.829	4.420
	TRAZIONE TRACTION [N]		142	248	415	687	1.058	1.750	2.829	4.420
<b>PDMPA</b>	SPINTA THRUST [N]		142	248	415	687	1.058	1.750	2.829	4.420
	TRAZIONE TRACTION [N]		142	248	415	687	1.058	1.750	2.829	4.420

**DIAGRAMMA CARICO AMMISSIBILE**

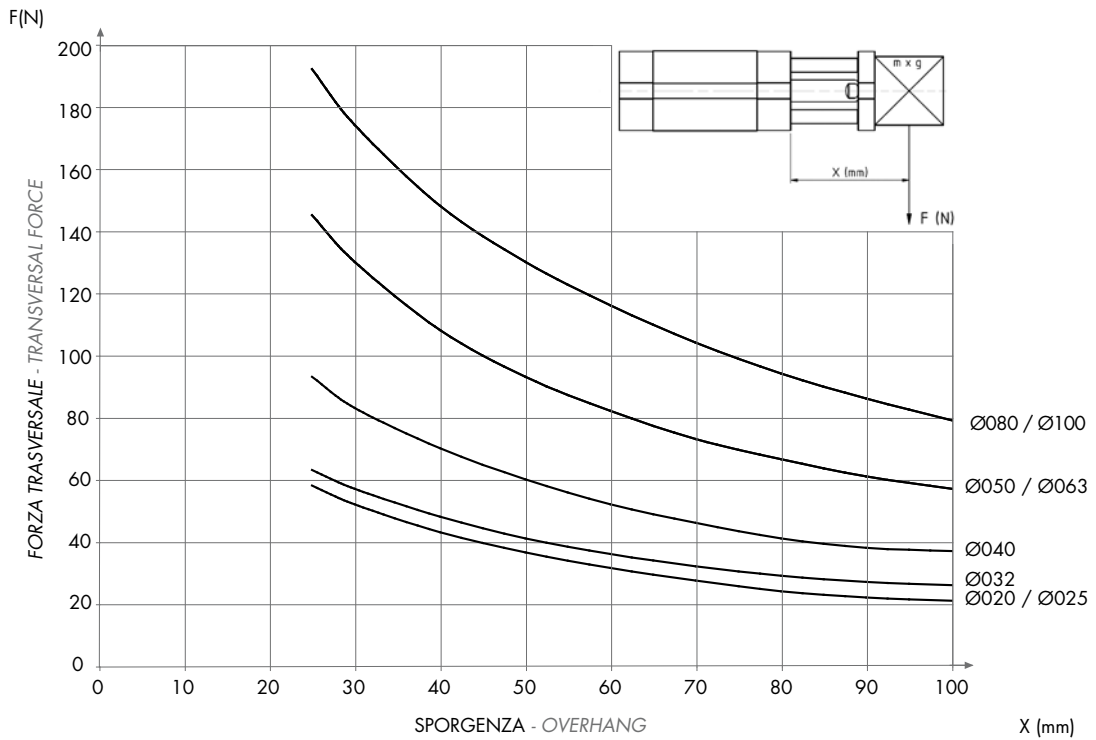
**APPLICABLE LOAD**

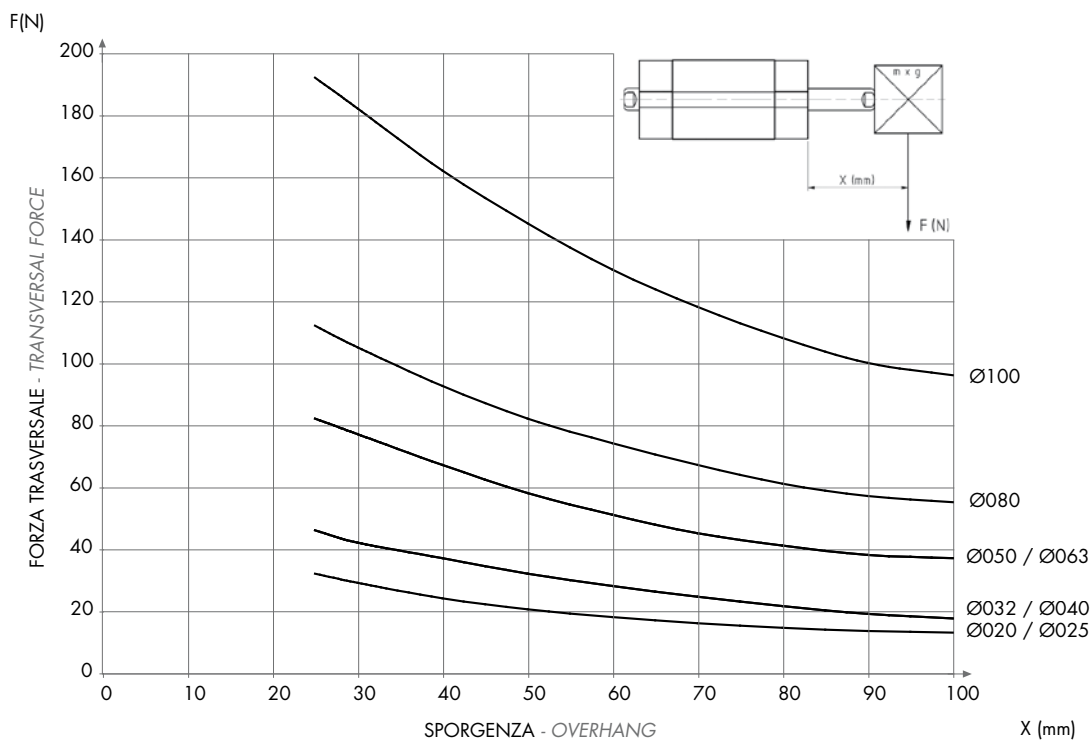
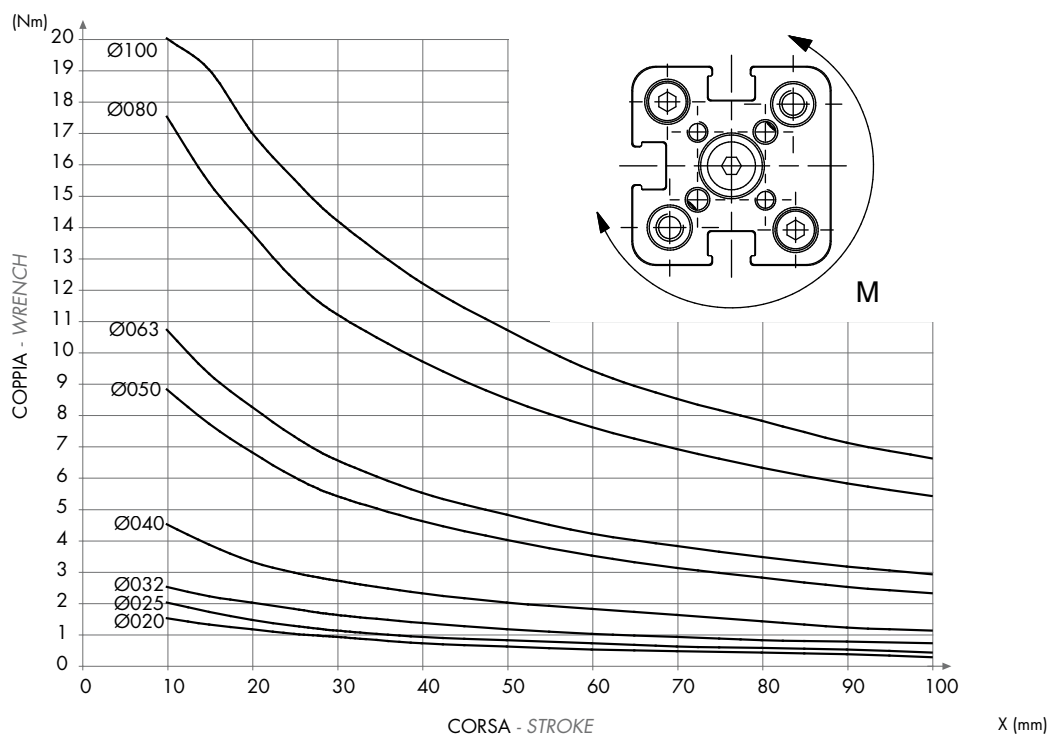
SERIE  
**P**



**DIAGRAMMA CARICO AMMISSIBILE**

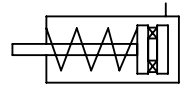
**APPLICABLE LOAD**



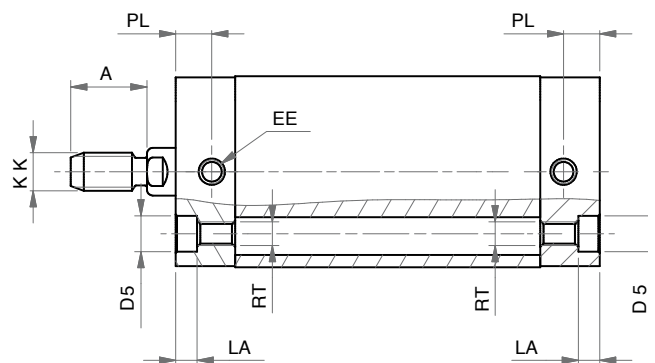
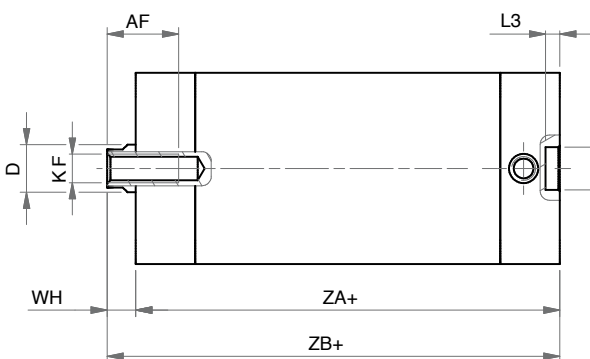
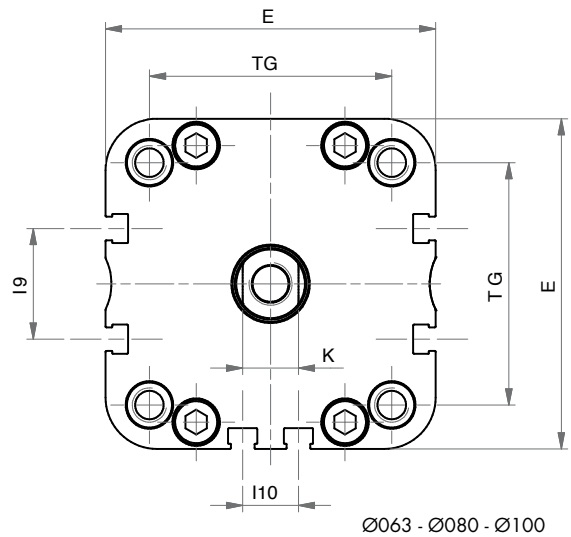
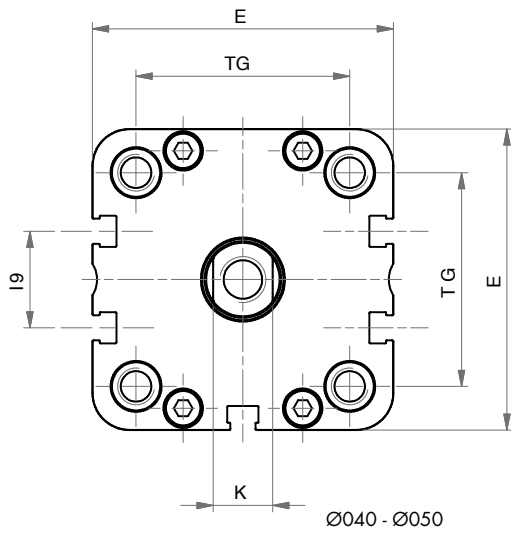
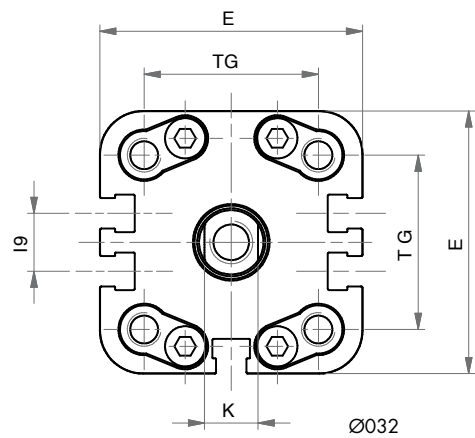
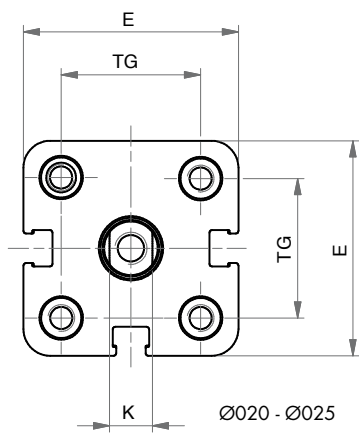
**DIAGRAMMA CARICO AMMISSIBILE**
**APPLICABLE LOAD**

 SERIE  
**P**
**DIAGRAMMA CARICO AMMISSIBILE**
**APPLICABLE LOAD**


**SEMPLICE EFFETTO MAGNETICO - MOLLA ANTERIORE**

**MAGNETIC SINGLE ACTING - FRONT SPRING**



SERIE  
**P**



**DIMENSIONI - DIMENSIONS**

Ø	020	025	032	040	050	063	080	100
<b>A</b>	16	16	19	19	22	22	28	28
<b>AF</b>	15	15	15	15	17	17	20	22
<b>ø D</b>	10	10	12	12	16	16	20	25
<b>ø D2</b>	9	9	9	9	12	12	12	12
<b>ø D5</b>	7,5	7,5	9	9	10,5	10,5	13,5	13,5
<b>E</b>	36	40	49	54,5	65,5	77	95,5	113,5
<b>EE</b>	M5	M5	G1/8	G1/8	G1/8	G1/8	G1/8	G1/8
<b>I9</b>	-	-	10,8	12,8	21	25,8	30	50
<b>I 10</b>	-	-	-	-	-	13	18	35
<b>K</b>	8	8	10	10	13	13	17	22
<b>KF</b>	M6	M6	M8	M8	M10	M10	M12	M12
<b>KK</b>	M8	M8	M10x1,25	M10x1,25	M12x1,25	M12x1,25	M16x1,5	M16x1,5
<b>LA</b>	4,5	4,5	5	5	5	5	3	3
<b>L3</b>	3	3	3	3	4	4	4	4
<b>PL</b>	7,5	7,5	7,5	8	8	7,5	8	10,5
<b>RT</b>	M5	M5	M6	M6	M8	M8	M10	M10
<b>TG</b>	22	26	32,5	38	46,5	56,5	72	89
<b>WH</b>	6,5	6	6,5	7	8	8	9	10
<b>ZA+</b>	37*	39*	44*	45*	45*	49*	54*	67*
<b>ZB+</b>	43,5*	45*	50,5*	52*	53*	57*	63*	77*

+ = aggiungere lunghezza corsa (mm) - add stroke length (mm)

\* per corse - for strokes 035 - 040 - 050 - 060:

PSM 020 aggiungere - add +10 mm

PSM 025 - 032 - 040 - 050 - 063 aggiungere - add +20 mm

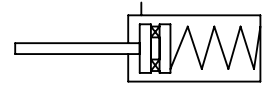
PSM 080 - 100 aggiungere - add +30 mm

**CORSE STANDARD - STANDARD STROKES**

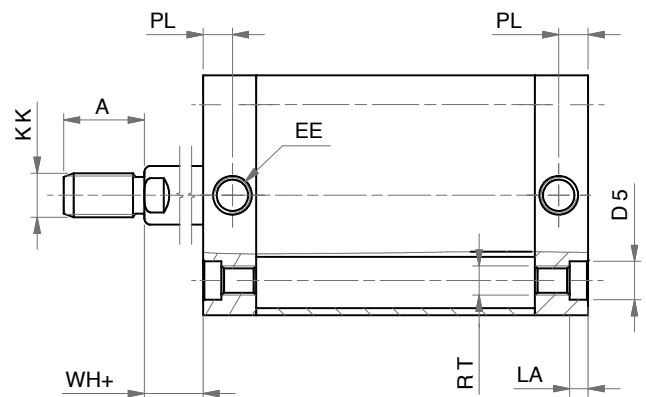
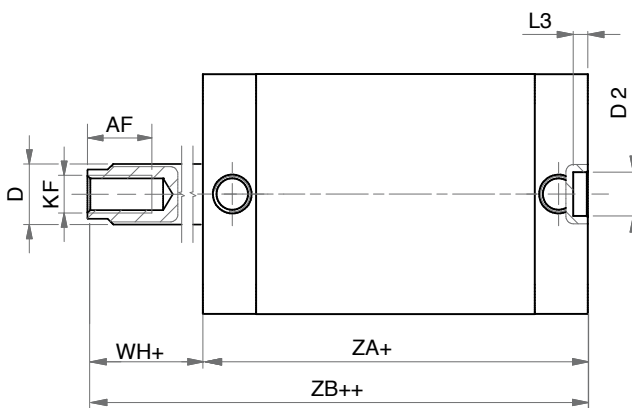
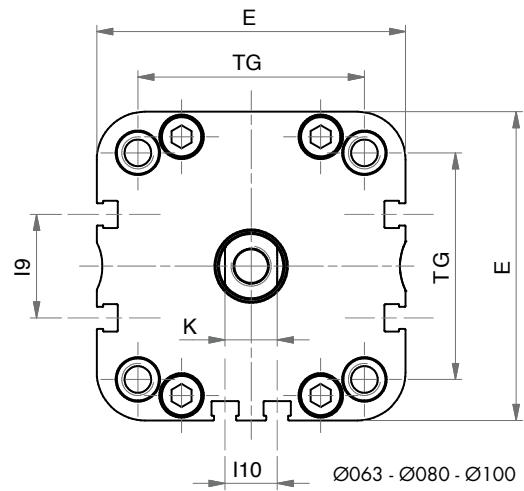
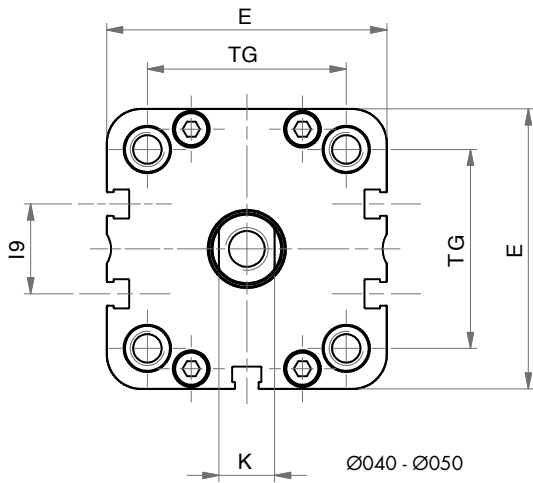
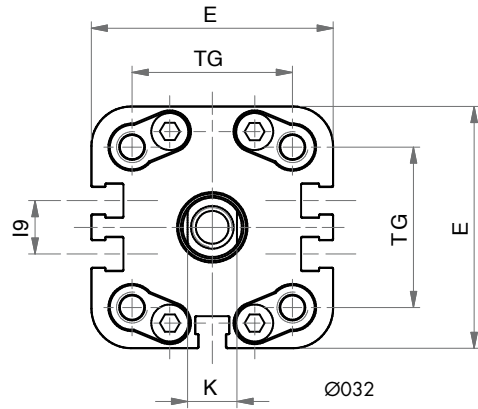
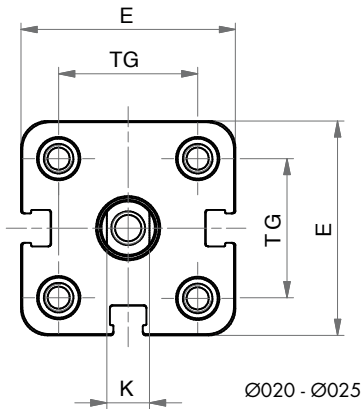
Ø	020	025	032	040	050	063	080	100
<b>005</b>	x	x	x	x	x	x	x	x
<b>010</b>	x	x	x	x	x	x	x	x
<b>015</b>	x	x	x	x	x	x	x	x
<b>020</b>	x	x	x	x	x	x	x	x
<b>025</b>	x	x	x	x	x	x	x	x
<b>030</b>	x	x	x	x	x	x	x	x
<b>035</b>	x	x	x	x	x	x	x	x
<b>040</b>	x	x	x	x	x	x	x	x
<b>050</b>	x	x	x	x	x	x	x	x
<b>060</b>	x	x	x	x	x	x	x	x

**SEMPLICE EFFETTO MAGNETICO - MOLLA POSTERIORE**

**MAGNETIC SINGLE ACTING - REAR SPRING**



SERIE  
**P**





**DIMENSIONI - DIMENSIONS**

Ø	020	025	032	040	050	063	080	100
<b>A</b>	16	16	19	19	22	22	28	28
<b>AF</b>	15	15	15	15	17	17	20	22
<b>ø D</b>	10	10	12	12	16	16	20	25
<b>ø D2</b>	9	9	9	9	12	12	12	12
<b>ø D5</b>	7,5	7,5	9	9	10,5	10,5	13,5	13,5
<b>E</b>	36	40	49	54,5	65,5	77	95,5	113,5
<b>EE</b>	M5	M5	G1/8	G1/8	G1/8	G1/8	G1/8	G1/8
<b>I9</b>	-	-	10,8	12,8	21	25,8	30	50
<b>I10</b>	-	-	-	-	-	13	18	35
<b>K</b>	8	8	10	10	13	13	17	22
<b>KF</b>	M6	M6	M8	M8	M10	M10	M12	M12
<b>KK</b>	M8	M8	M10x1,25	M10x1,25	M12x1,25	M12x1,25	M16x1,5	M16x1,5
<b>LA</b>	4,5	4,5	5	5	5	5	3	3
<b>L3</b>	3	3	3	3	4	4	4	4
<b>PL</b>	7,5	7,5	7,5	8	8	7,5	8	10,5
<b>RT</b>	M5	M5	M6	M6	M8	M8	M10	M10
<b>TG</b>	22	26	32,5	38	46,5	56,5	72	89
<b>WH+</b>	6,5	6	6,5	7	8	8	9	10
<b>ZA+</b>	37*	39*	44*	45*	45*	49*	54*	67*
<b>ZB++</b>	43,5*	45*	50,5*	52*	53*	57*	63*	77*

+ = aggiungere lunghezza corsa (mm) - *add stroke length (mm)* ++ = 2 x lunghezza corsa - *2 x stroke length*

\* per corse - *for strokes* 035 - 040 - 050 - 060:

PSEM 020 - 025 - 032 - 040 - 050 - 063 aggiungere - *add* +10 mm

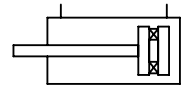
PSEM 080 - 100 aggiungere - *add* +20 mm

**CORSE STANDARD - STANDARD STROKES**

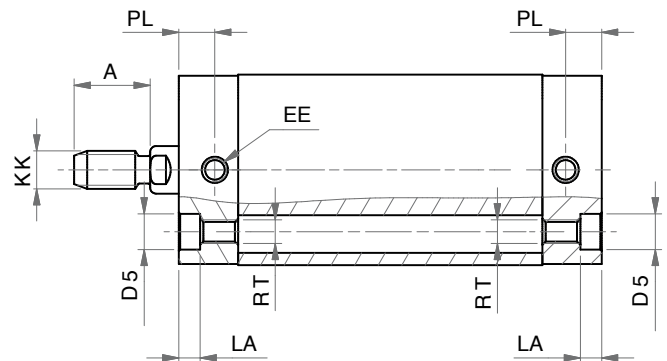
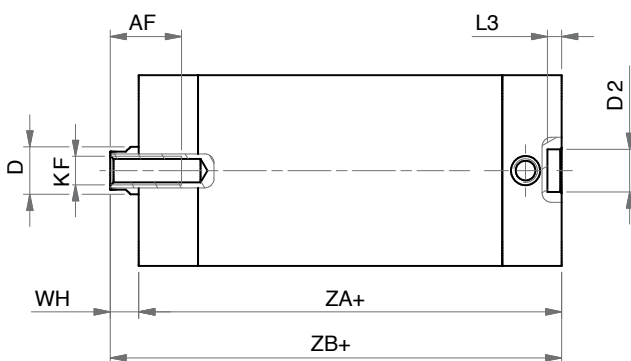
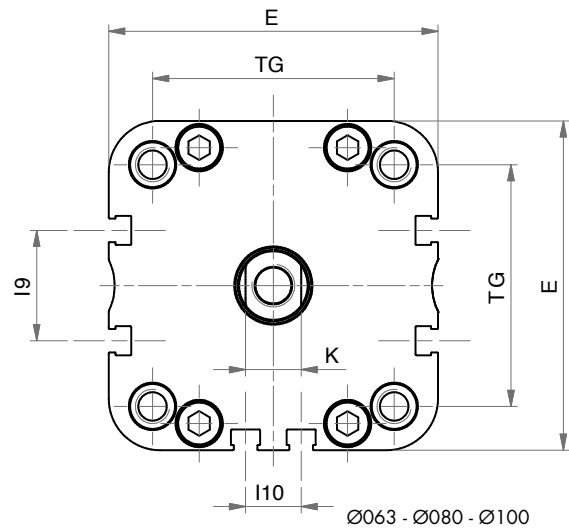
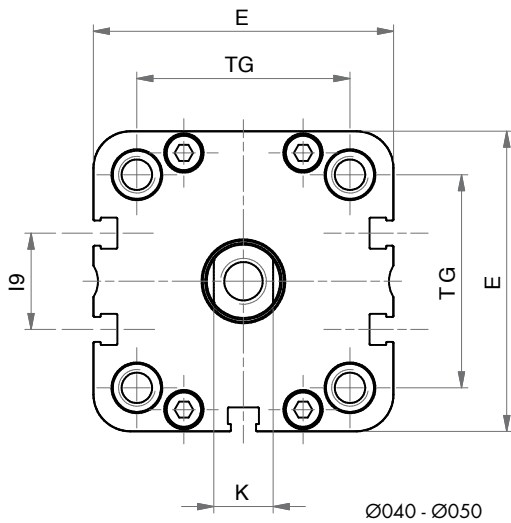
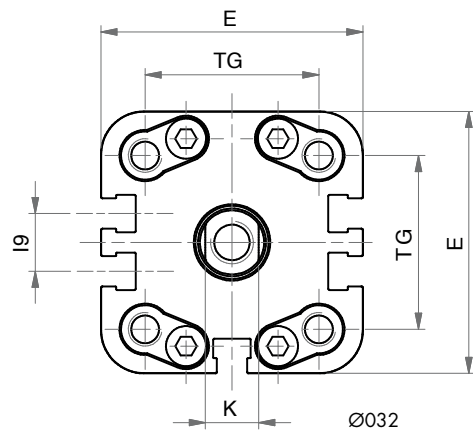
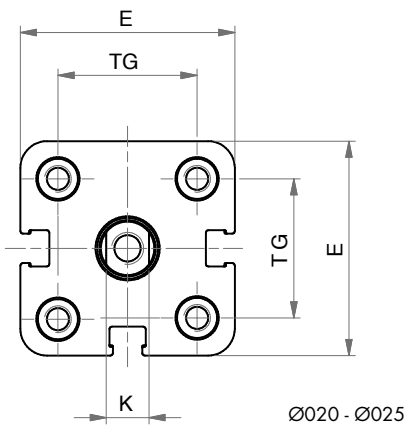
Ø	020	025	032	040	050	063	080	100
<b>005</b>	x	x	x	x	x	x	x	x
<b>010</b>	x	x	x	x	x	x	x	x
<b>015</b>	x	x	x	x	x	x	x	x
<b>020</b>	x	x	x	x	x	x	x	x
<b>025</b>	x	x	x	x	x	x	x	x
<b>030</b>	x	x	x	x	x	x	x	x
<b>035</b>	x	x	x	x	x	x	x	x
<b>040</b>	x	x	x	x	x	x	x	x
<b>050</b>	x	x	x	x	x	x	x	x
<b>060</b>	x	x	x	x	x	x	x	x

**DOPPIO EFFETTO MAGNETICO**

**MAGNETIC DOUBLE ACTING**



SERIE  
**P**



**DIMENSIONI - DIMENSIONS**

Ø	020	025	032	040	050	063	080	100
A	16	16	19	19	22	22	28	28
AF	15	15	15	15	17	17	20	22
ø D	10	10	12	12	16	16	20	25
ø D2	9	9	9	9	12	12	12	12
ø D5	7,5	7,5	9	9	10,5	10,5	13,5	13,5
E	36	40	49	54,5	65,5	77	95,5	113,5
EE	M5	M5	G1/8	G1/8	G1/8	G1/8	G1/8	G1/8
I9	-	-	10,8	12,8	21	25,8	30	50
I10	-	-	-	-	-	13	18	35
K	8	8	10	10	13	13	17	22
KF	M6	M6	M8	M8	M10	M10	M12	M12
KK	M8	M8	M10x1,25	M10x1,25	M12x1,25	M12x1,25	M16x1,5	M16x1,5
LA	4,5	4,5	5	5	5	5	3	3
L3	3	3	3	3	4	4	4	4
PL	7,5	7,5	7,5	8	8	7,5	8	10,5
RT	M5	M5	M6	M6	M8	M8	M10	M10
TG	22	26	32,5	38	46,5	56,5	72	89
WH	6,5	6	6,5	7	8	8	9	10
ZA+	37	39	44	45	45	49	54	67
ZB+	43,5	45	50,5	52	53	57	63	77

+ = aggiungere lunghezza corsa (mm) - add stroke length (mm)

**OPZIONE V-Z - OPTION V-Z**

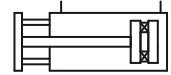
Ø	020	025	032	040	050	063	080	100
A	16	22	22	24	32	32	40	40
AF	12	12	15	15	20	20	22	22
ø D	10	10	12	16	20	20	25	25
K	8	8	10	13	17	17	22	22
KF	M5	M6	M6	M6	M8	M8	M10	M12
KK	M8	M10x1,25	M10x1,25	M12x1,25	M16x1,5	M16x1,5	M20x1,5	M20x1,5

**CORSE STANDARD - STANDARD STROKES**

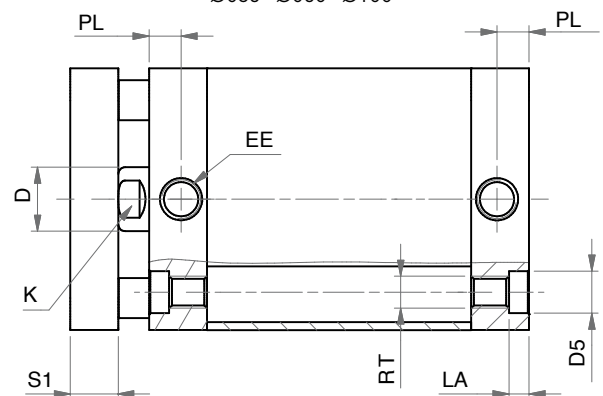
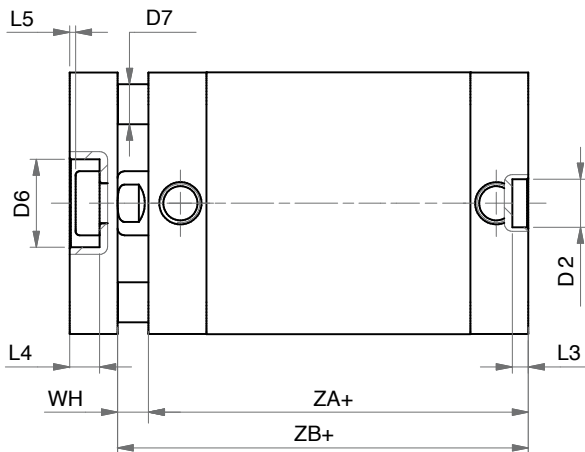
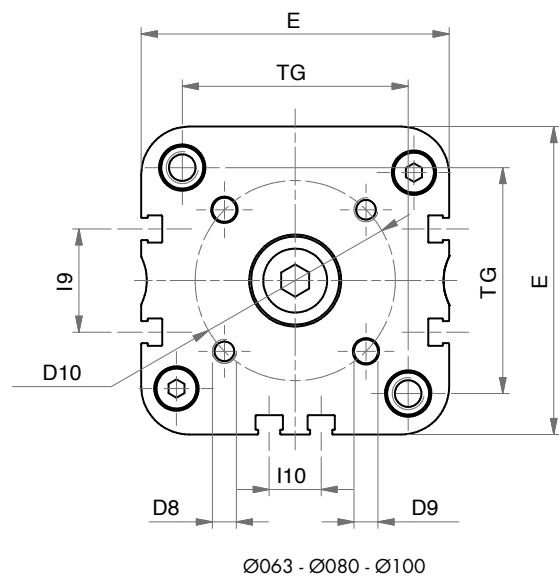
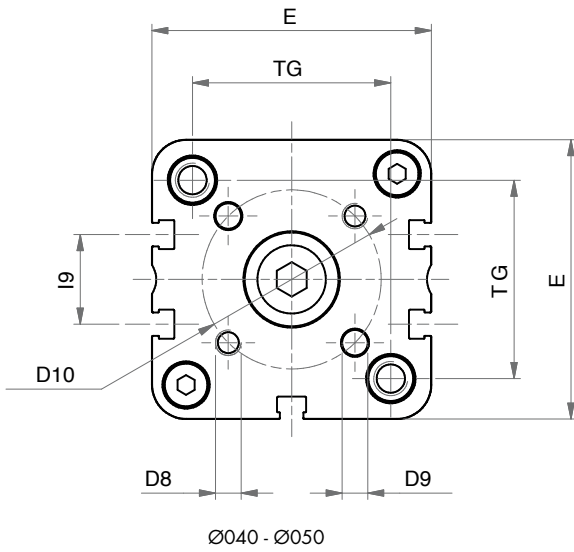
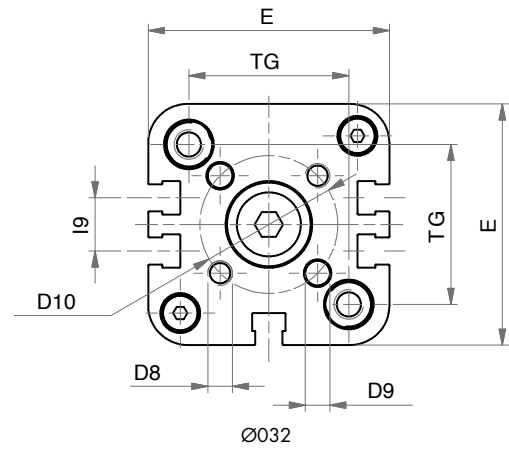
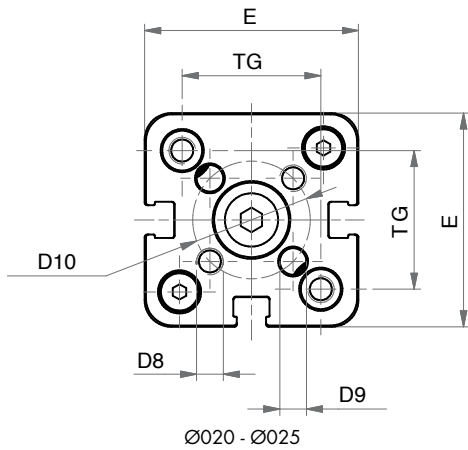
Ø	020	025	032	040	050	063	080	100
005	x	x	x	x	x	x	x	x
010	x	x	x	x	x	x	x	x
015	x	x	x	x	x	x	x	x
020	x	x	x	x	x	x	x	x
025	x	x	x	x	x	x	x	x
030	x	x	x	x	x	x	x	x
040	x	x	x	x	x	x	x	x
050	x	x	x	x	x	x	x	x
060	x	x	x	x	x	x	x	x
070	x	x	x	x	x	x	x	x
075	x	x	x	x	x	x	x	x
080	x	x	x	x	x	x	x	x
090	x	x	x	x	x	x	x	x
100	x	x	x	x	x	x	x	x
125	x	x	x	x	x	x	x	x
160	x	x	x	x	x	x	x	x
200	x	x	x	x	x	x	x	x
250	x	x	x	x	x	x	x	x
300			x	x	x	x	x	x
350			x	x	x	x	x	x
400			x	x	x	x	x	x

**DOPPIO EFFETTO MAGNETICO ANTIROTAZIONE**

**ANTI-ROTATION MAGNETIC DOUBLE ACTING**



SERIE  
**P**



**DIMENSIONI - DIMENSIONS**

Ø	020	025	032	040	050	063	080	100
Ø D	10	10	12	12	16	16	20	25
Ø D2	9	9	9	9	12	12	12	12
Ø D5	7,5	7,5	9	9	10,5	10,5	13,5	13,5
Ø D6	11	14	17	17	22	22	28	30
Ø D7	5	6	6	8	10	10	14	14
D8	M4	M5	M5	M5	M6	M6	M8	M10
Ø D9	4	5	5	5	6	6	8	10
Ø D10	17	22	28	33	42	50	65	80
E	36	40	49	54,5	65,5	77	95,5	113,5
EE	M5	M5	G1/8	G1/8	G1/8	G1/8	G1/8	G1/8
I9	-	-	10,8	12,8	21	25,8	30	50
I10	-	-	-	-	-	13	18	35
K	8	8	10	10	13	13	17	22
LA	4,5	4,5	5	5	5	5	3	3
L3	3	3	3	3	4	4	4	4
L4	5	5	6,5	6,5	7,5	7,5	9	10
L5	1	1	1,5	1,5	1,5	1,5	2	3
PL	7,5	7,5	7,5	8	8	7,5	8	10,5
RT	M5	M5	M6	M6	M8	M8	M10	M10
S1	8	8	10	10	12	12	14	14
TG	22	26	32,5	38	46,5	56,5	72	89
WH	6,5	6	6,5	7	8	8	9	10
ZA+	37	39	44	45	45	49	54	67
ZB+	43,5	45	50,5	52	53	57	63	77

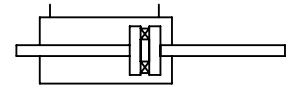
+ = aggiungere lunghezza corsa (mm) - add stroke length (mm)

**CORSE STANDARD - STANDARD STROKES**

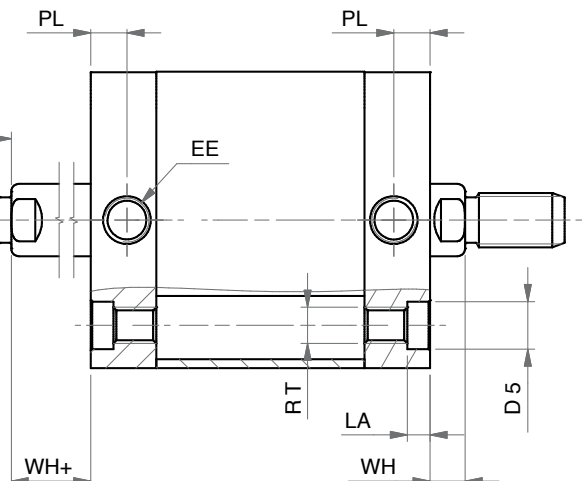
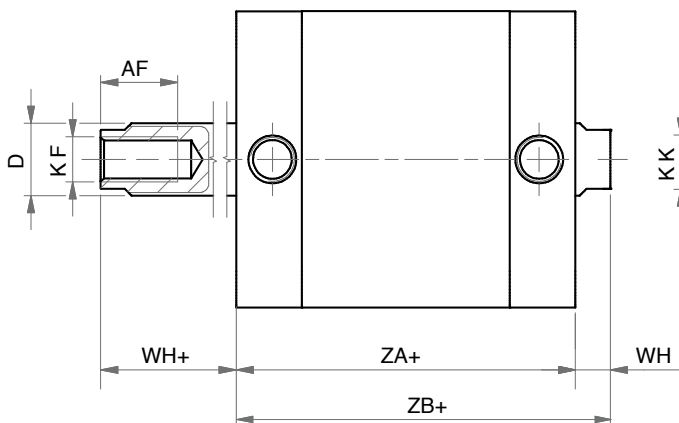
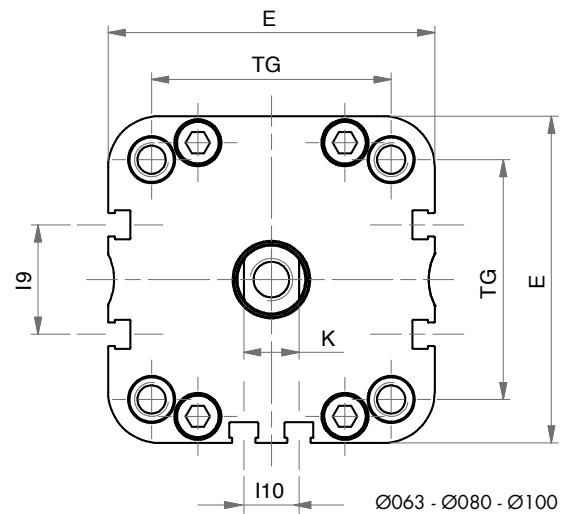
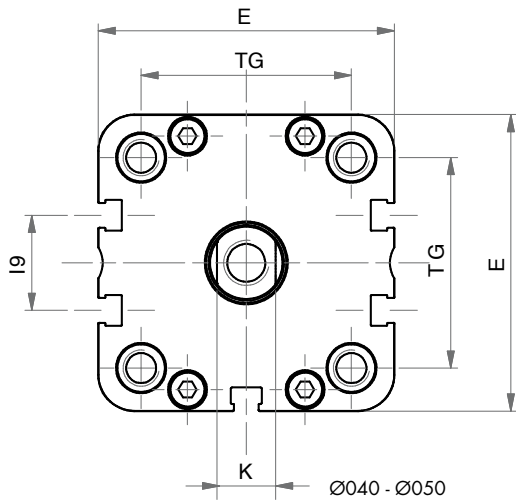
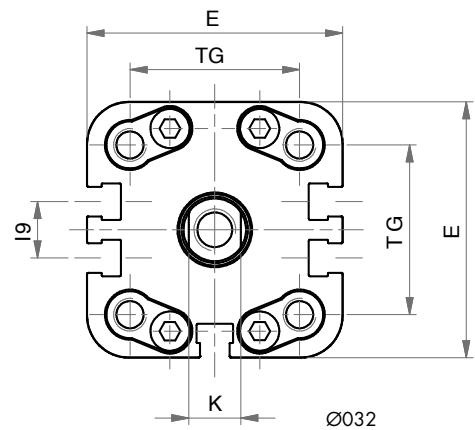
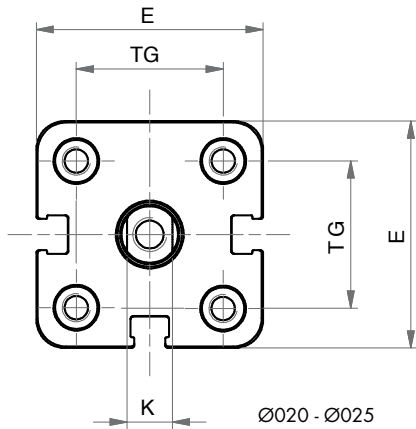
Ø	020	025	032	040	050	063	080	100
005	x	x	x	x	x	x	x	x
010	x	x	x	x	x	x	x	x
015	x	x	x	x	x	x	x	x
020	x	x	x	x	x	x	x	x
025	x	x	x	x	x	x	x	x
030	x	x	x	x	x	x	x	x
040	x	x	x	x	x	x	x	x
050	x	x	x	x	x	x	x	x
060	x	x	x	x	x	x	x	x
070	x	x	x	x	x	x	x	x
075	x	x	x	x	x	x	x	x
080	x	x	x	x	x	x	x	x
090	x	x	x	x	x	x	x	x
100	x	x	x	x	x	x	x	x
125	x	x	x	x	x	x	x	x
160	x	x	x	x	x	x	x	x
200	x	x	x	x	x	x	x	x
250			x	x	x	x	x	x
300			x	x	x	x	x	x
350			x	x	x	x	x	x
400			x	x	x	x	x	x

**DOPPIO EFFETTO MAGNETICO STELO PASSANTE**

**DOUBLE ROD MAGNETIC DOUBLE ACTING**



SERIE  
**P**



**DIMENSIONI - DIMENSIONS**

Ø	020	025	032	040	050	063	080	100
<b>A</b>	16	16	19	19	22	22	28	28
<b>AF</b>	15	15	15	15	17	17	20	22
<b>ø D</b>	10	10	12	12	16	16	20	25
<b>ø D5</b>	7,5	7,5	9	9	10,5	10,5	13,5	13,5
<b>E</b>	36	40	49	54,5	65,5	77	95,5	113,5
<b>EE</b>	M5	M5	G1/8	G1/8	G1/8	G1/8	G1/8	G1/8
<b>I9</b>	-	-	10,8	12,8	21	25,8	30	50
<b>I10</b>	-	-	-	-	-	13	18	35
<b>K</b>	8	8	10	10	13	13	17	22
<b>KF</b>	M6	M6	M8	M8	M10	M10	M12	M12
<b>KK</b>	M8	M8	M10x1,25	M10x1,25	M12x1,25	M12x1,25	M16x1,5	M16x1,5
<b>LA</b>	4,5	4,5	5	5	5	5	3	3
<b>PL</b>	7,5	7,5	7,5	8	8	7,5	8	10,5
<b>RT</b>	M5	M5	M6	M6	M8	M8	M10	M10
<b>TG</b>	22	26	32,5	38	46,5	56,5	72	89
<b>WH</b>	6,5	6	6,5	7	8	8	9	10
<b>WH+</b>	6,5	6	6,5	7	8	8	9	10
<b>ZA+</b>	37	39	44	45	45	49	54	67
<b>ZB+</b>	43,5	45	50,5	52	53	57	63	77

+ = aggiungere lunghezza corsa (mm) - add stroke length (mm)

**OPZIONE V-Z - OPTION V-Z**

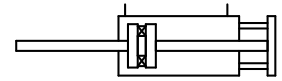
Ø	020	025	032	040	050	063	080	100
<b>A</b>	16	22	22	24	32	32	40	40
<b>AF</b>	11	15	15	15	16	16	17	20
<b>ø D</b>	10	10	12	16	20	20	25	25
<b>K</b>	8	8	10	13	17	17	22	22
<b>KF</b>	M5	M6	M6	M6	M8	M8	M10	M12
<b>KK</b>	M8	M10x1,25	M10x1,25	M12x1,25	M16x1,5	M16x1,5	M20x1,5	M20x1,5

**CORSE STANDARD - STANDARD STROKES**

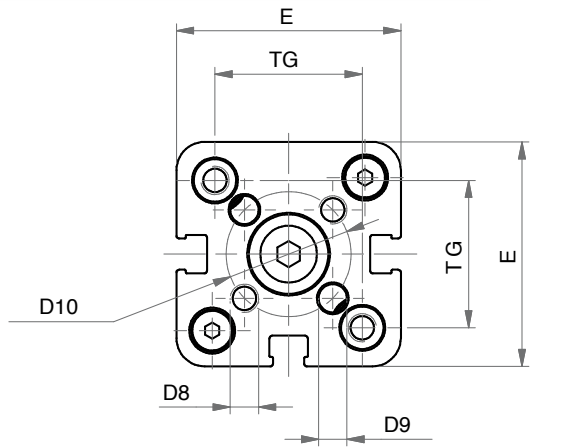
Ø	020	025	032	040	050	063	080	100
<b>005</b>	x	x	x	x	x	x	x	x
<b>010</b>	x	x	x	x	x	x	x	x
<b>015</b>	x	x	x	x	x	x	x	x
<b>020</b>	x	x	x	x	x	x	x	x
<b>025</b>	x	x	x	x	x	x	x	x
<b>030</b>	x	x	x	x	x	x	x	x
<b>040</b>	x	x	x	x	x	x	x	x
<b>050</b>	x	x	x	x	x	x	x	x
<b>060</b>	x	x	x	x	x	x	x	x
<b>070</b>	x	x	x	x	x	x	x	x
<b>075</b>	x	x	x	x	x	x	x	x
<b>080</b>	x	x	x	x	x	x	x	x
<b>090</b>	x	x	x	x	x	x	x	x
<b>100</b>	x	x	x	x	x	x	x	x
<b>125</b>	x	x	x	x	x	x	x	x
<b>160</b>	x	x	x	x	x	x	x	x
<b>200</b>	x	x	x	x	x	x	x	x
<b>250</b>	x	x	x	x	x	x	x	x
<b>300</b>			x	x	x	x	x	x
<b>350</b>			x	x	x	x	x	x
<b>400</b>			x	x	x	x	x	x

**DOPPIO EFFETTO MAGNETICO STELO PASSANTE ANTIROTAZIONE**

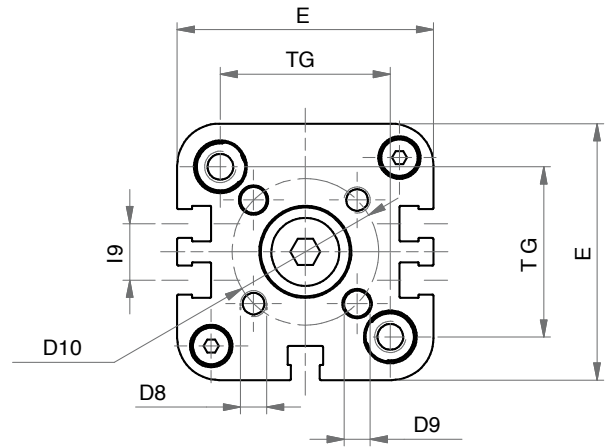
**ANTI-ROTATION DOUBLE ROD MAGNETIC DOUBLE ACTING**



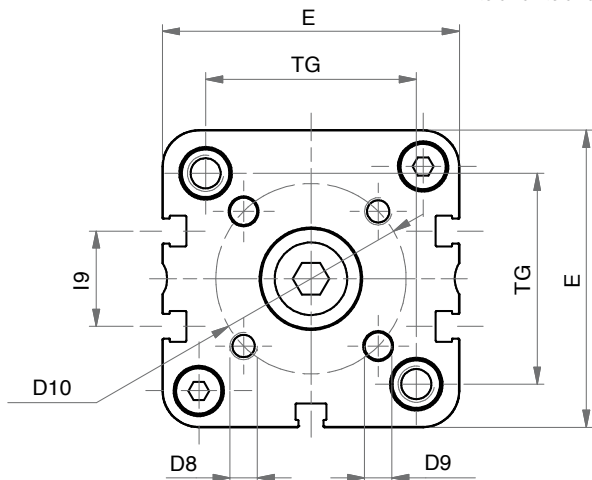
SERIE  
**P**



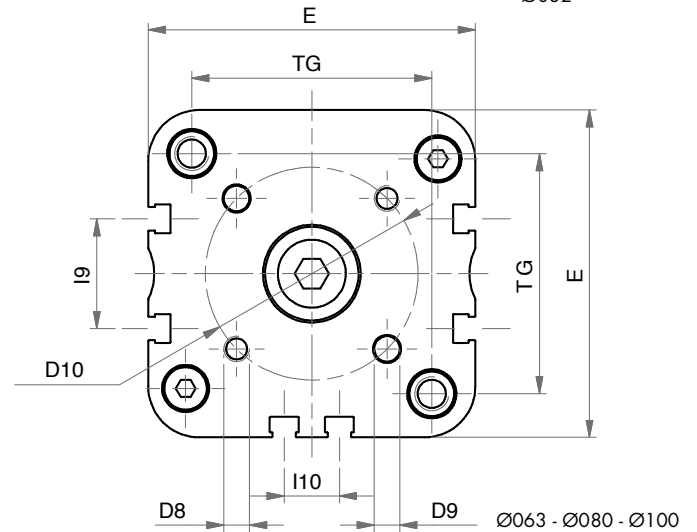
Ø20 - Ø25



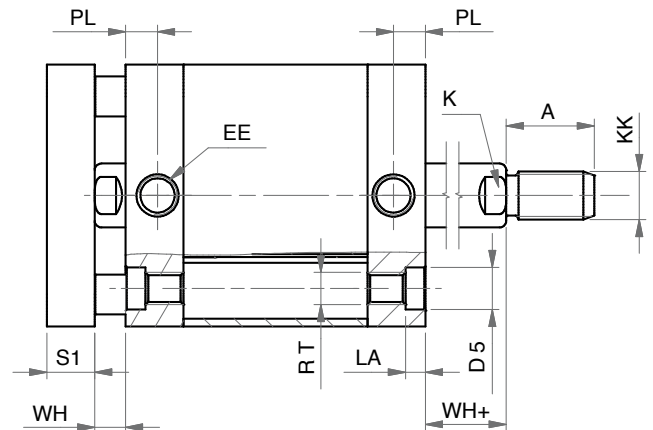
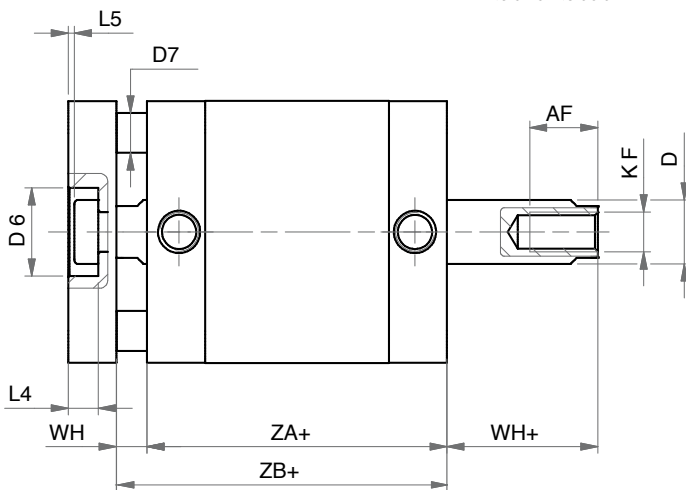
Ø32



Ø40 - Ø50



Ø63 - Ø80 - Ø100





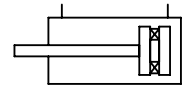
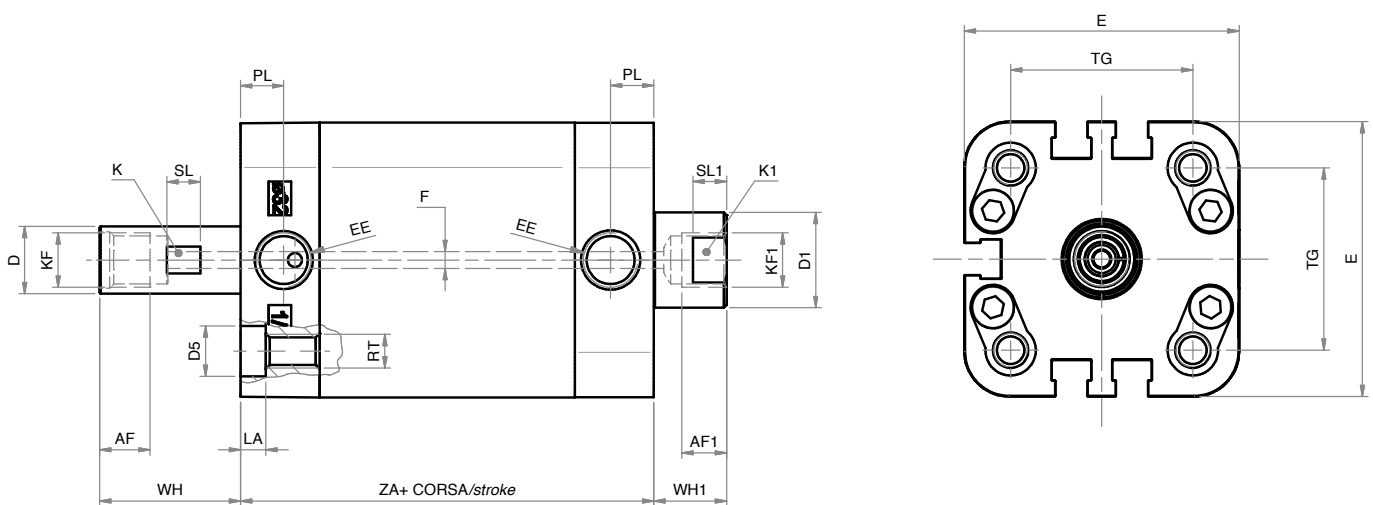
**DIMENSIONI - DIMENSIONS**

Ø	020	025	032	040	050	063	080	100
A	16	16	19	19	22	22	28	28
AF	15	15	15	15	17	17	20	22
ø D	10	10	12	12	16	16	20	25
ø D5	7,5	7,5	9	9	10,5	10,5	13,5	13,5
ø D6	11	14	17	17	22	22	28	30
ø D7	5	6	6	8	10	10	14	14
D8	M4	M5	M5	M5	M6	M6	M8	M10
ø D9	4	5	5	5	6	6	8	10
ø D10	17	22	28	33	42	50	65	80
E	36	40	49	54,5	65,5	77,0	95,5	113,5
EE	M5	M5	G1/8	G1/8	G1/8	G1/8	G1/8	G1/8
I9	-	-	10,8	12,8	21	25,8	30	50
I10	-	-	-	-	-	13	18	35
K	8	8	10	10	13	13	17	22
KF	M6	M6	M8	M8	M10	M10	M12	M12
KK	M8	M8	M10x1,25	M10x1,25	M12x1,25	M12x1,25	M16x1,5	M16x1,5
LA	4,5	4,5	5	5	5	5	3	3
L4	5	5	6,5	6,5	7,5	7,5	9	10
L5	1	1	1,5	1,5	1,5	1,5	2	3
PL	7,5	7,5	7,5	8	8	7,5	8	10,5
RT	M5	M5	M6	M6	M8	M8	M10	M10
S1	8	8	10	10	12	12	14	14
TG	22	26	32,5	38	46,5	56,5	72	89
WH	6,5	6	6,5	7	8	8	9	10
WH+	6,5	6	6,5	7	8	8	9	10
ZA+	37	39	44	45	45	49	54	67
ZB+	43,5	45	50,5	52	53	57	63	77

+ = aggiungere lunghezza corsa (mm) - add stroke length (mm)

**CORSE STANDARD - STANDARD STROKES**

Ø	020	025	032	040	050	063	080	100
005	x	x	x	x	x	x	x	x
010	x	x	x	x	x	x	x	x
015	x	x	x	x	x	x	x	x
020	x	x	x	x	x	x	x	x
025	x	x	x	x	x	x	x	x
030	x	x	x	x	x	x	x	x
040	x	x	x	x	x	x	x	x
050	x	x	x	x	x	x	x	x
060	x	x	x	x	x	x	x	x
070	x	x	x	x	x	x	x	x
075	x	x	x	x	x	x	x	x
080	x	x	x	x	x	x	x	x
090	x	x	x	x	x	x	x	x
100	x	x	x	x	x	x	x	x
125	x	x	x	x	x	x	x	x
160	x	x	x	x	x	x	x	x
200	x	x	x	x	x	x	x	x
250			x	x	x	x	x	x
300			x	x	x	x	x	x
350			x	x	x	x	x	x
400			x	x	x	x	x	x

**CILINDRO D.E.M. STELO FORATO**
**CYLINDER WITH HOLLOW ROD D.A.M.**

 SERIE  
**P**


Note: stelo in acciaio inox 304 cromato

Note: chromed AISI 304 stainless steel rod

**DIMENSIONI - DIMENSIONS**

<b>Ø</b>	32	<b>PL</b>	7,5
<b>AF</b>	9	<b>RT</b>	M6
<b>AF1</b>	7,5	<b>SL</b>	6
<b>ØD</b>	12	<b>SL1</b>	6
<b>ØD1</b>	12	<b>TG</b>	32,5
<b>ØD5</b>	9	<b>WH</b>	25
<b>E</b>	49	<b>WH1</b>	13
<b>EE</b>	G 1/8"	<b>ZA+</b>	50
<b>ØF</b>	3	<b>TG</b>	32,5
<b>K</b>	11	<b>VA</b>	4
<b>K1</b>	15	<b>VD</b>	5
<b>KF</b>	G 1/8"	<b>WH</b>	50
<b>KF1</b>	G 1/8"	<b>WH1</b>	17
<b>LA</b>	5		

**CORSE STANDARD - STANDARD STROKES**

<b>Ø</b>	32
<b>050</b>	x
<b>100</b>	x
<b>150</b>	x
<b>200</b>	x
<b>230</b>	x
<b>300</b>	x

# CILINDRI TANDEM - TANDEM CYLINDERS

## CHIAVE DI CODIFICA - KEY CODE

**P T2 M 0 6 3 . 1 0 0 . G S . M**

SERIE  
**P**

### VERSIONE - VERSION

- T2** tandem doppia spinta  
*double thrust tandem*
- T3** tandem tripla spinta  
*3 x force*
- T4** tandem quadrupla spinta  
*4 x force*

**P P M 0 5 0 . 0 3 0 . 0 8 0 . G S . F**

### ALESAGGIO - BORE (Ø)

**020 - 025 - 032 - 040**

**050 - 063 - 080 - 100**

### I° CORSA (mm) I° STROKE (mm)

vedere tabelle corse std  
*see std stroke tables*

### II° CORSA (mm) II° STROKE (mm)

vedere tabelle corse std  
*see std stroke tables*

### STELO - ROD

**F** femmina  
*female*

**M** maschio  
*male*

### VERSIONE - VERSION

- M** magnetico - *magnetic*
- non magnetico - *non-magnetic*

### VERSIONE - VERSION

- P** tandem più posizioni  
*multi position tandem*
- C** tandem contrapposti posteriori  
*rear opposed tandem*
- F** tandem contrapposti anteriori  
*front opposed tandem*

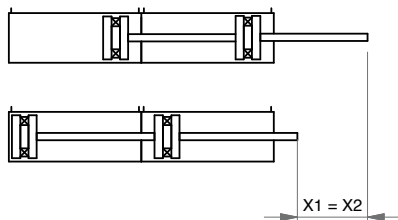
### GUARNIZIONI - SEALS

- GS** guarnizioni standard  
*standard seals*
- VR** guarnizione stelo per alte temperature  
*high temperature rod seal*
- VA** tutte le guarnizioni per alte temperature  
*all seals for high temperature*

### SERIE - SERIES

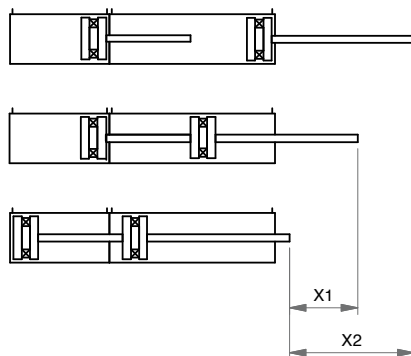
- P** tubo profilato con cave per sensori  
*tube with slots for sensors*

### DOPPIA SPINTA - DOUBLE THRUST

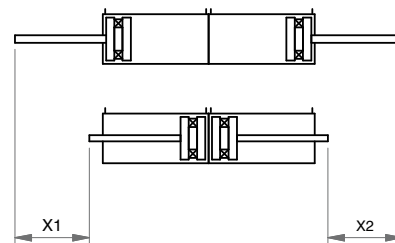


X1 = 1° corsa  
X2 = 2° corsa

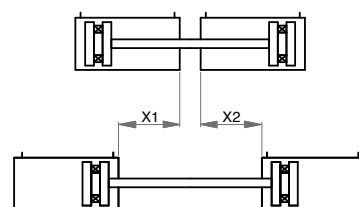
### PIÙ POSIZIONI - MULTI-POSITIONS



### CONTRAPPOSTI POSTERIORI - REAR OPPOSED



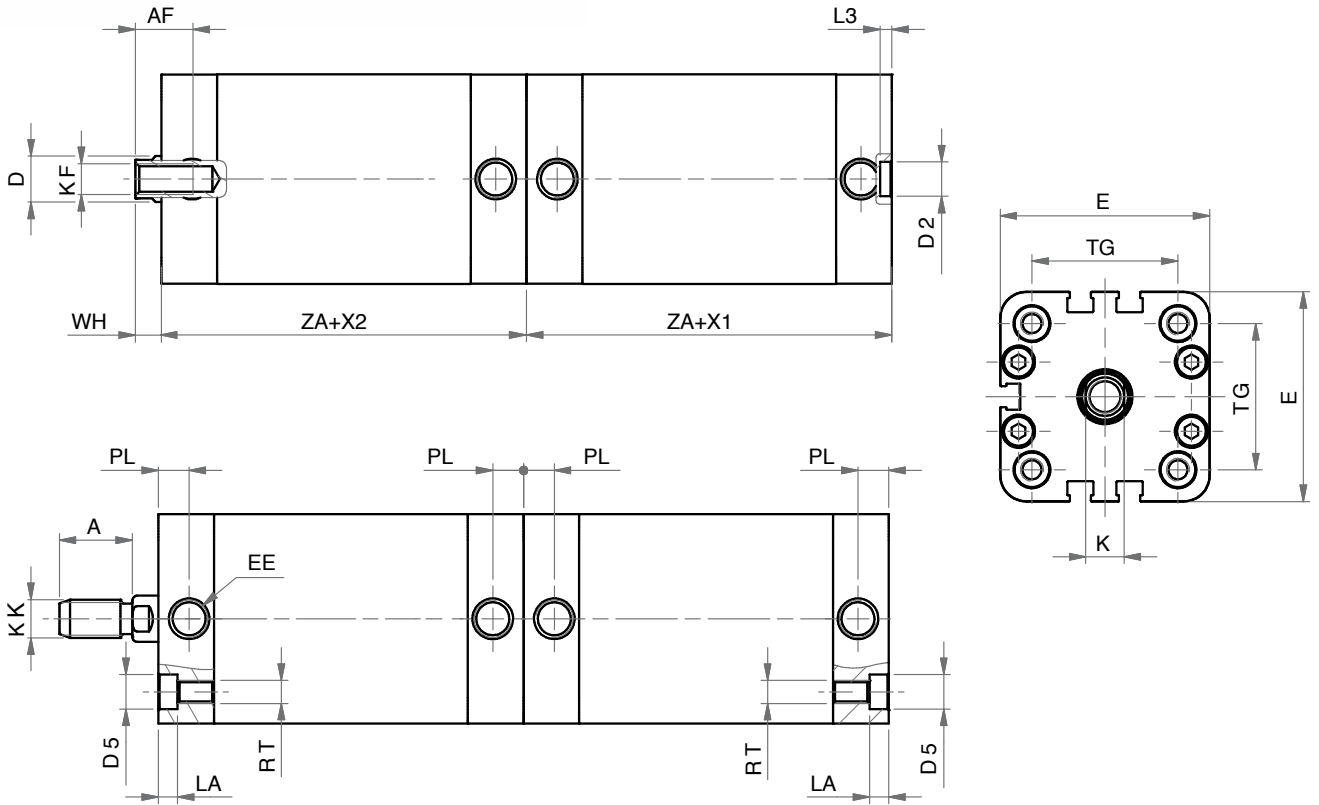
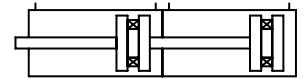
### CONTRAPPOSTI ANTERIORI - FRONT OPPOSED



PTM

**TANDEM DOPPIA SPINTA**

**DOUBLE THRUST TANDEM**



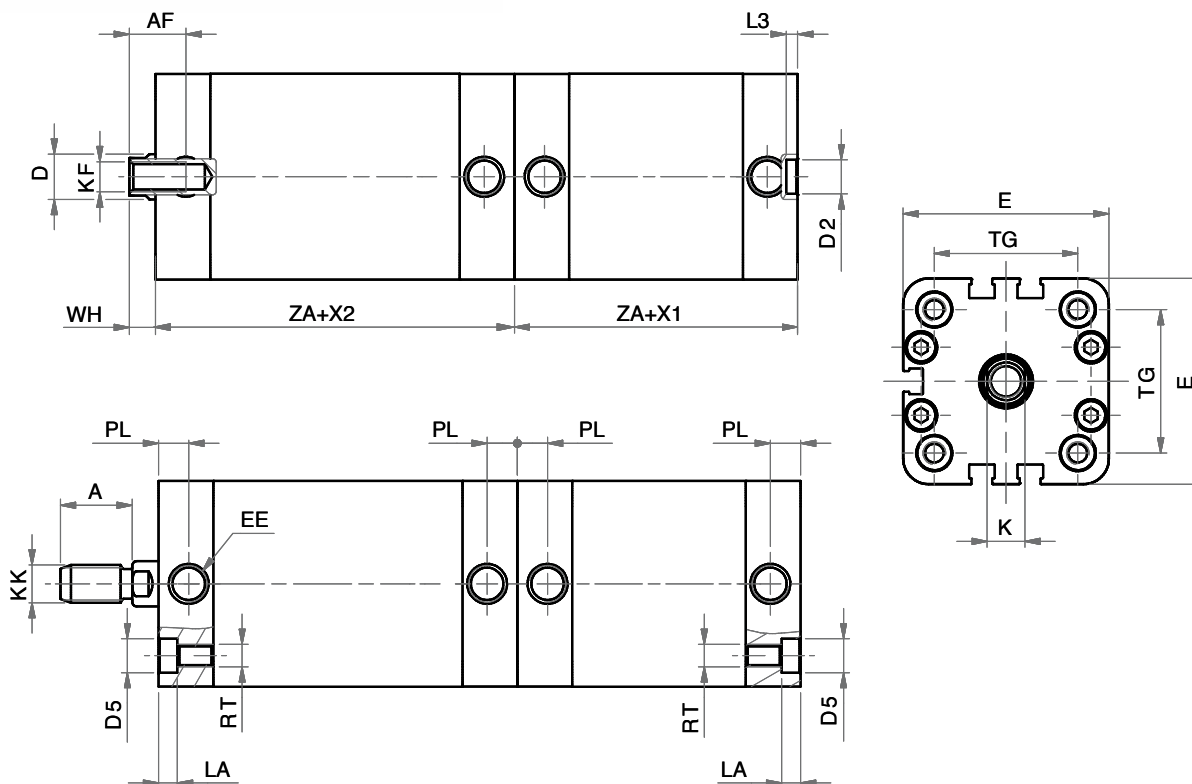
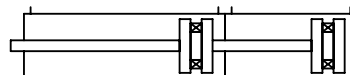
**DIMENSIONI - DIMENSIONS**

<b>Ø</b>	020	025	032	040	050	063	080	100
<b>A</b>	16	16	19	19	22	22	28	28
<b>AF</b>	15	15	15	15	17	17	20	22
<b>Ø D</b>	10	10	12	12	16	16	20	25
<b>Ø D2</b>	9	9	9	9	12	12	12	12
<b>Ø D5</b>	7,5	7,5	9	9	10,5	10,5	13,5	13,5
<b>E</b>	36	40	49	54,5	65,5	77	95,5	113,5
<b>EE</b>	M5	M5	G1/8	G1/8	G1/8	G1/8	G1/8	G1/8
<b>K</b>	8	8	10	10	13	13	17	22
<b>KF</b>	M6	M6	M8	M8	M10	M10	M12	M12
<b>KK</b>	M8	M8	M10x1,25	M10x1,25	M12x1,25	M12x1,25	M16x1,5	M16x1,5
<b>L3</b>	3	3	3	3	4	4	4	4
<b>LA</b>	4,5	4,5	5	5	6,5	5	3	3
<b>PL</b>	7,5	7,5	7,5	8	8	7,5	8	10,5
<b>RT</b>	M5	M5	M6	M6	M8	M8	M10	M10
<b>TG</b>	22	26	32,5	38	46,5	56,5	72	89
<b>WH</b>	6,5	6	6,5	7	8	8	9	10
<b>X1</b>	I° CORSA - I° STROKE							
<b>X2</b>	II° CORSA - II° STROKE							
<b>ZA+</b>	37	39	44	45	45	49	54	67

# TANDEM PIÙ POSIZIONI

PPM

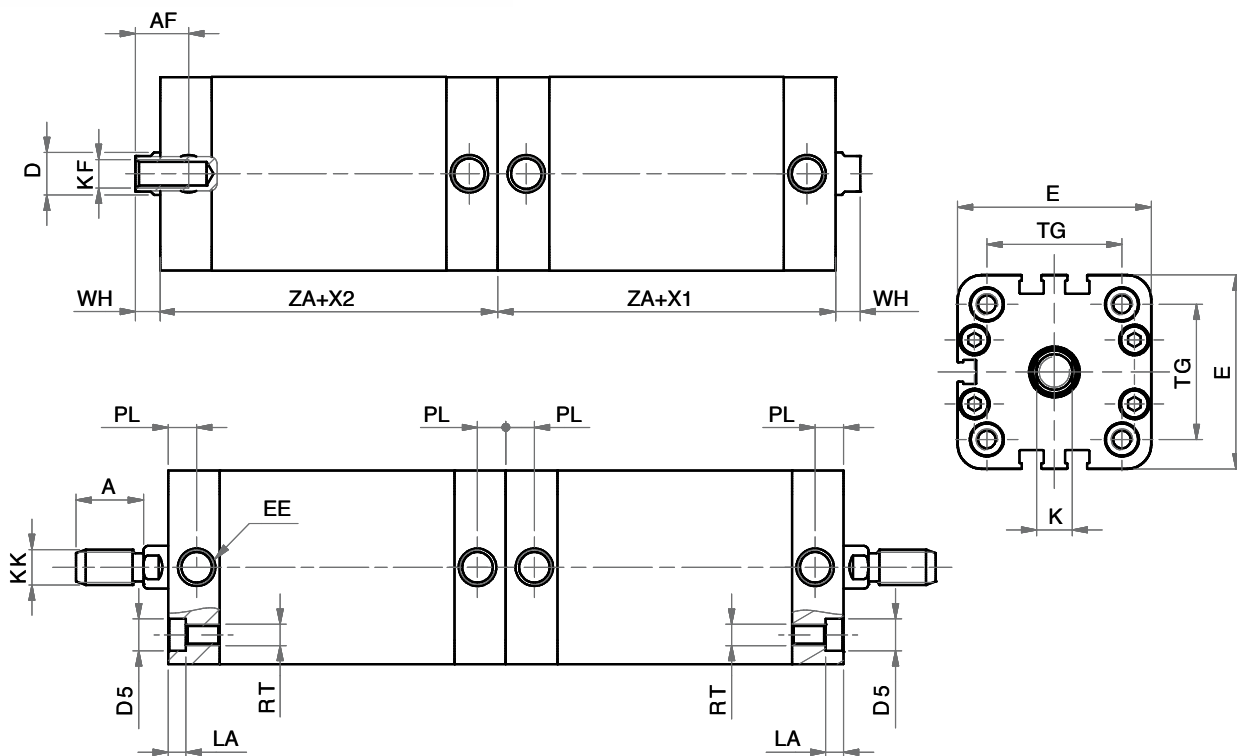
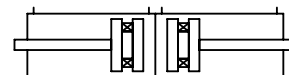
## MULTI-POSITION TANDEM



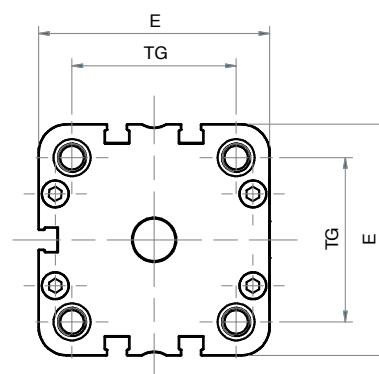
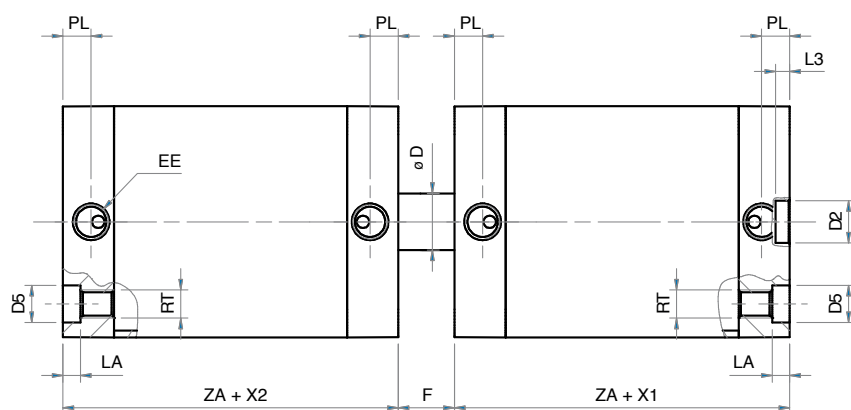
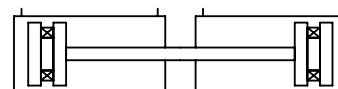
SERIE  
P

### DIMENSIONI - DIMENSIONS

	020	025	032	040	050	063	080	100
<b>Ø</b>	020	025	032	040	050	063	080	100
<b>A</b>	16	16	19	19	22	22	28	28
<b>AF</b>	15	15	15	15	17	17	20	22
<b>ØD</b>	10	10	12	12	16	16	20	25
<b>ØD2</b>	9	9	9	9	12	12	12	12
<b>ØD5</b>	7,5	7,5	9	9	10,5	10,5	13,5	13,5
<b>E</b>	36	40	49	54,5	65,5	77	95,5	113,5
<b>EE</b>	M5	M5	G1/8	G1/8	G1/8	G1/8	G1/8	G1/8
<b>K</b>	8	8	10	10	13	13	17	22
<b>KF</b>	M6	M6	M8	M8	M10	M10	M12	M12
<b>KK</b>	M8	M8	M10x1,25	M10x1,25	M12x1,25	M12x1,25	M16x1,5	M16x1,5
<b>L3</b>	3	3	3	3	4	4	4	4
<b>LA</b>	4,5	4,5	5	5	6,5	5	3	3
<b>PL</b>	7,5	7,5	7,5	8	8	7,5	8	10,5
<b>RT</b>	M5	M5	M6	M6	M8	M8	M10	M10
<b>TG</b>	22	26	32,5	38	46,5	56,5	72	89
<b>WH</b>	6,5	6	6,5	7	8	8	9	10
<b>X1</b>	I° CORSA - I° STROKE							
<b>X2</b>	II° CORSA - II° STROKE							
<b>ZA+</b>	37	39	44	45	45	49	54	67

**TANDEM CONTRAPPOSTI POSTERIORI**
**REAR OPPOSED TANDEM**

**DIMENSIONI - DIMENSIONS**

<b>Ø</b>	020	025	032	040	050	063	080	100
<b>A</b>	16	16	19	19	22	22	28	28
<b>AF</b>	15	15	15	15	17	17	20	22
<b>ØD</b>	10	10	12	12	16	16	20	25
<b>ØD5</b>	7,5	7,5	9	9	10,5	10,5	13,5	13,5
<b>E</b>	36	40	49	54,5	65,5	77	95,5	113,5
<b>EE</b>	M5	M5	G1/8	G1/8	G1/8	G1/8	G1/8	G1/8
<b>K</b>	8	8	10	10	13	13	17	22
<b>KF</b>	M6	M6	M8	M8	M10	M10	M12	M12
<b>KK</b>	M8	M8	M10x1,25	M10x1,25	M12x1,25	M12x1,25	M16x1,5	M16x1,5
<b>L3</b>	3	3	3	3	4	4	4	4
<b>LA</b>	4,5	4,5	5	5	6,5	5	3	3
<b>PL</b>	7,5	7,5	7,5	8	8	7,5	8	10,5
<b>RT</b>	M5	M5	M6	M6	M8	M8	M10	M10
<b>TG</b>	22	26	32,5	38	46,5	56,5	72	89
<b>WH</b>	6,5	6	6,5	7	8	8	9	10
<b>X1</b>	I° CORSA - I° STROKE							
<b>X2</b>	II° CORSA - II° STROKE							
<b>ZA+</b>	37	39	44	45	45	49	54	67

**TANDEM CONTRAPPOSTI ANTERIORI**
**FRONT OPPOSED TANDEM**

 SERIE  
**P**
**DIMENSIONI - DIMENSIONS**

	Ø20	Ø25	Ø32	Ø40	Ø50	Ø63	Ø80	Ø100
Ø D	10	10	12	12	16	16	20	25
Ø D2	9	9	9	9	12	12	12	12
Ø D5	7,5	7,5	9	9	10,5	10,5	13,5	13,5
E	36	40	49	54,5	65,5	77	95,5	113,5
EE	M5	M5	G1/8	G1/8	G1/8	G1/8	G1/8	G1/8
F	13	12	13	14	16	16	18	20
L3	3	3	3	3	4	4	4	4
LA	4,5	4,5	5	5	5	5	3	3
PL	7,5	7,5	7,5	8	8	7,5	8	10,5
RT	M5	M5	M6	M6	M8	M8	M10	M10
TG	22	26	32,5	38	46,5	56,5	72	89
X1	I° CORSA - I° STROKE							
X2	II° CORSA - II° STROKE							
ZA+	37	39	44	45	45	49	54	67