



SERIE

M

PINZE PNEUMATICHE
PNEUMATIC GRIPPERS

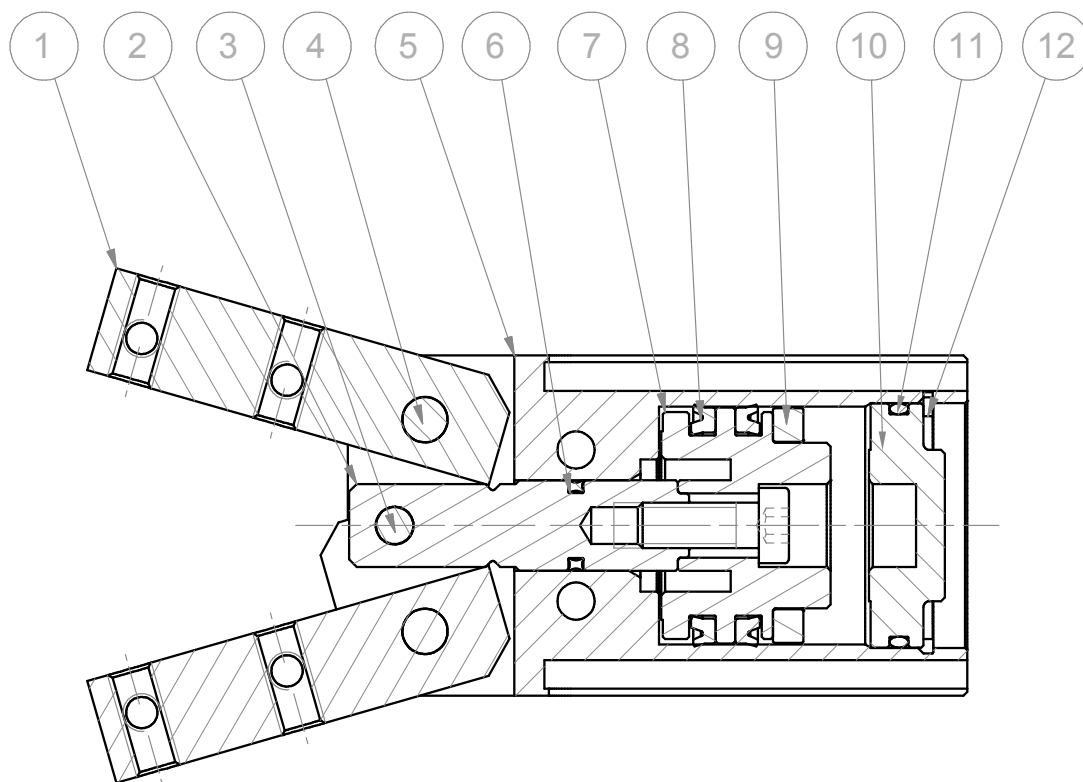

ARTEC[®]
PNEUMATIC COMPONENTS

CARATTERISTICHE TECNICHE - TECHNICAL CHARACTERISTICS

Pressione di esercizio <i>Working pressure</i>	max 10 bar
Temperatura di esercizio <i>Working temperature</i>	0 ÷ +80°C (-20°C con aria secca - <i>with dry air</i>)
Versioni - Versions	semplice effetto, doppio effetto - <i>single acting, double acting</i>
Alesaggi - Bores	Ø 16 - 20 - 32 - 50
Fluido - Fluid	aria compressa, filtrata, non lubrificata - <i>compressed air, filtered, no lubrication</i>

CARATTERISTICHE COSTRUTTIVE - CONSTRUCTIVE CHARACTERISTICS

①	Griffa - Jaw	acciaio temprato - <i>tempered steel</i>
②	Stelo - Rod	acciaio inox AISI 303 - <i>AISI 303 stainless steel</i>
③ ④	Perno - Pin	acciaio temprato - <i>tempered steel</i>
⑤	Corpo - Housing	alluminio anodizzato - <i>anodized aluminium</i>
⑥ ⑧ ⑫	Guarnizioni - Seals	nbr
⑦	Pistone - Piston	alluminio - <i>aluminium</i>
⑨	Magnete - Magnet	plastofferite - <i>rubber magnet</i>
⑩	Testata - Cover	ottone - <i>brass</i>
⑪	Seeger - Retaining ring	acciaio - <i>steel</i>
	Molla - Spring	acciaio - <i>steel</i>



CHIAVE DI CODIFICA

KEY CODE

M 2 0 D E M

VERSIONE - VERSION

NA normalmente aperta (molla in apertura)
spring open

NAM normalmente aperta magnetica (molla in apertura)
magnetic spring open

NC normalmente chiusa (molla in chiusura)
spring closed

NCM normalmente chiusa magnetica (molla in chiusura)
spring closed

DE doppio effetto
double acting

DEM doppio effetto magnetico
magnetic double acting

DEP doppio effetto con perno posteriore
double acting with rear pin

ALESAGGIO - BORE (Ø)

016-020-032-050

SERIE - SERIES

M pinza pneumatica ad apertura angolare
pneumatic angular gripper

FORZA TEORICA DI BLOCCAGGIO (P=6bar)

THEORETICAL LOCKING FORCE (P=6bar)

COD.	FORZA DI BLOCCAGGIO [KG] LOCKING FORCE [KG]	PRESSIONE DI ESERCIZIO [BAR] WORKING PRESSURE [BAR]
M16NA - M16NAM	4	2,5 ÷ 10
M16NC - M16NCM	5,2	2,5 ÷ 10
M16DE - M16DEM	5,5 - 6,5	1,5 ÷ 10
M20NA - M20NAM	7,5	2 ÷ 10
M20NC - M20NCM	8,5	2 ÷ 10
M20DE - M20DEM	10,1 - 12,2	1,5 ÷ 10
M32NA - M32NAM	16,5	2 ÷ 10
M32NC - M32NCM	19,5	2 ÷ 10
M32DE - M32DEM	22 - 24	1,5 ÷ 10
M50NAM	46	2 ÷ 10
M50NCM	49	2 ÷ 10
M50DEM	52 - 60	1,5 ÷ 10

La forza di bloccaggio è calcolata alla distanza di 15mm dal fulcro delle griffe; a 30mm per M50.

The locking force is calculated at a distance of 15 mm from the jaws fulcrum; as to M50, the distance is 30mm.

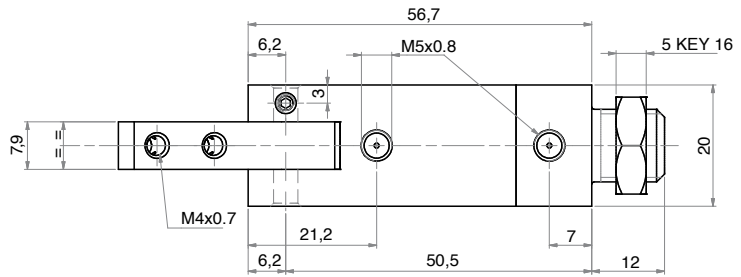
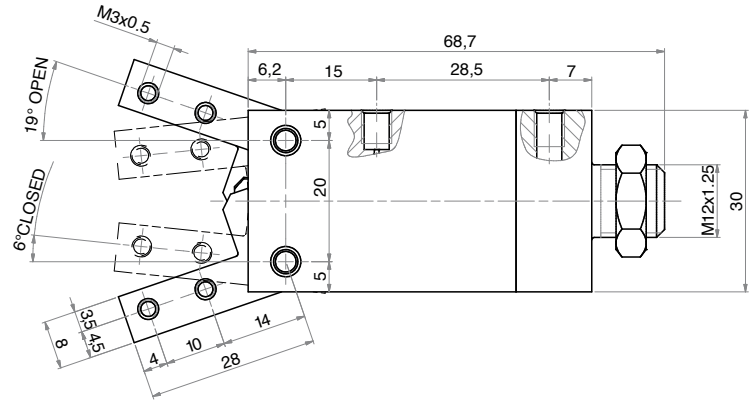
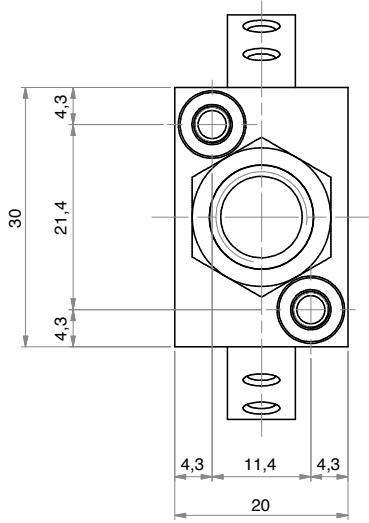
PINZE PNEUMATICHE

M16DE

M16NA

M16NC

PNEUMATIC GRIPPERS



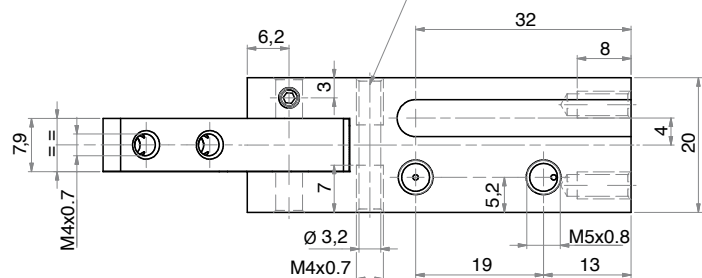
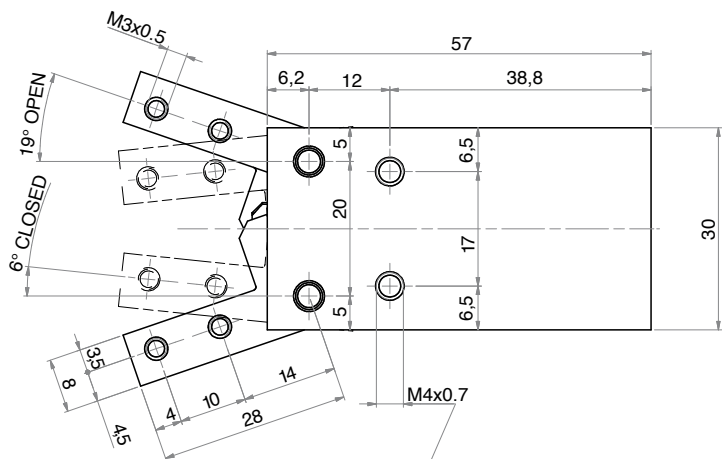
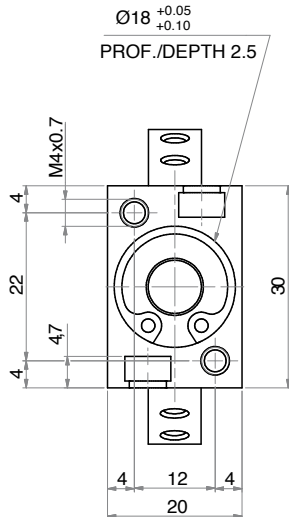
PINZE PNEUMATICHE

M16DEM

M16NAM

M16NCM

PNEUMATIC GRIPPERS



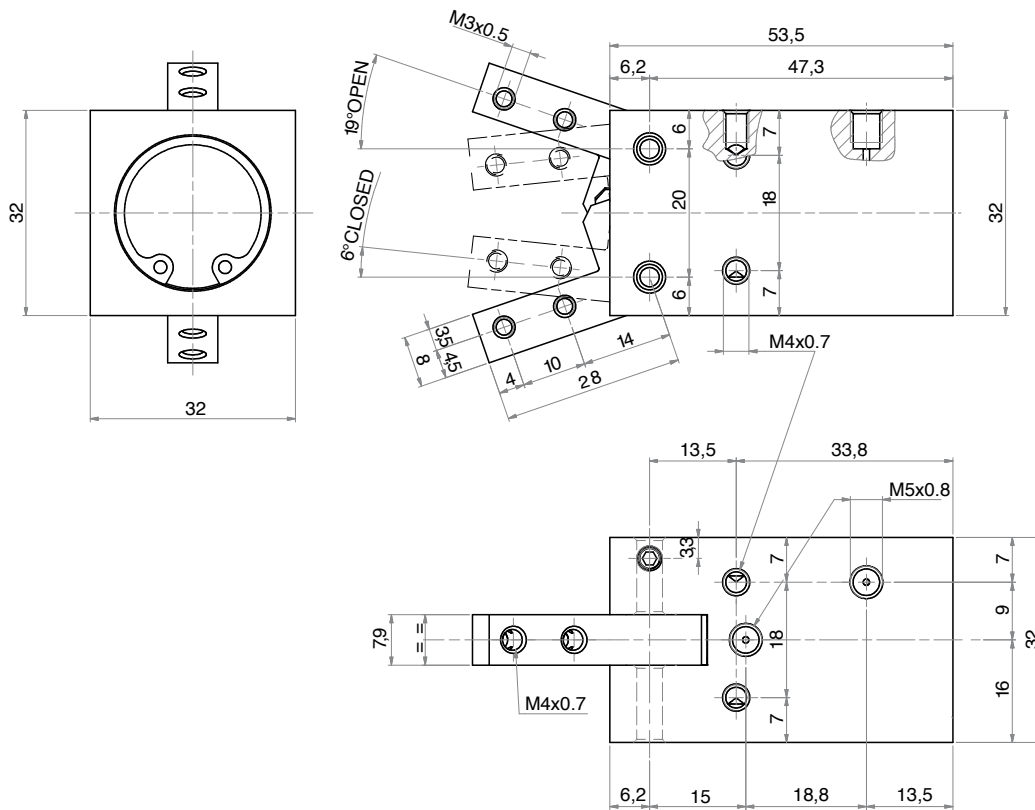
PINZE PNEUMATICHE

M20DE

M20NA

M20NC

PNEUMATIC GRIPPERS



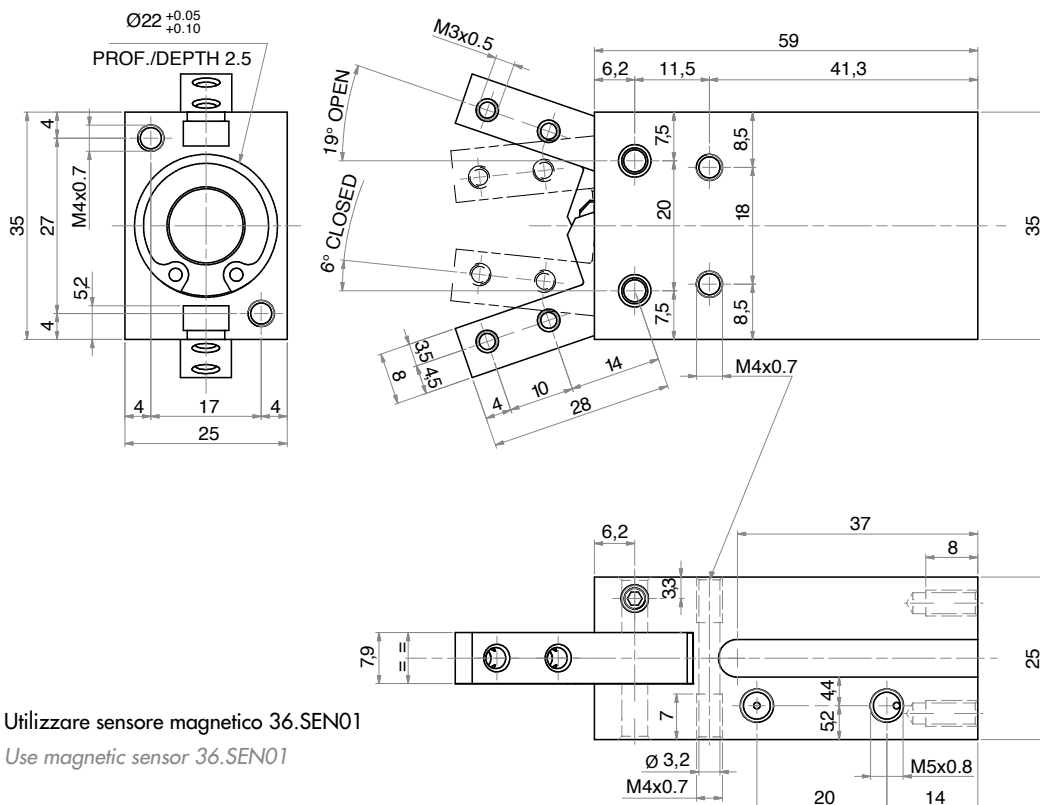
PINZE PNEUMATICHE

M20DEM

M20NAM

M20NCM

PNEUMATIC GRIPPERS



!!!: Utilizzare sensore magnetico 36.SEN01
!!!: Use magnetic sensor 36.SEN01

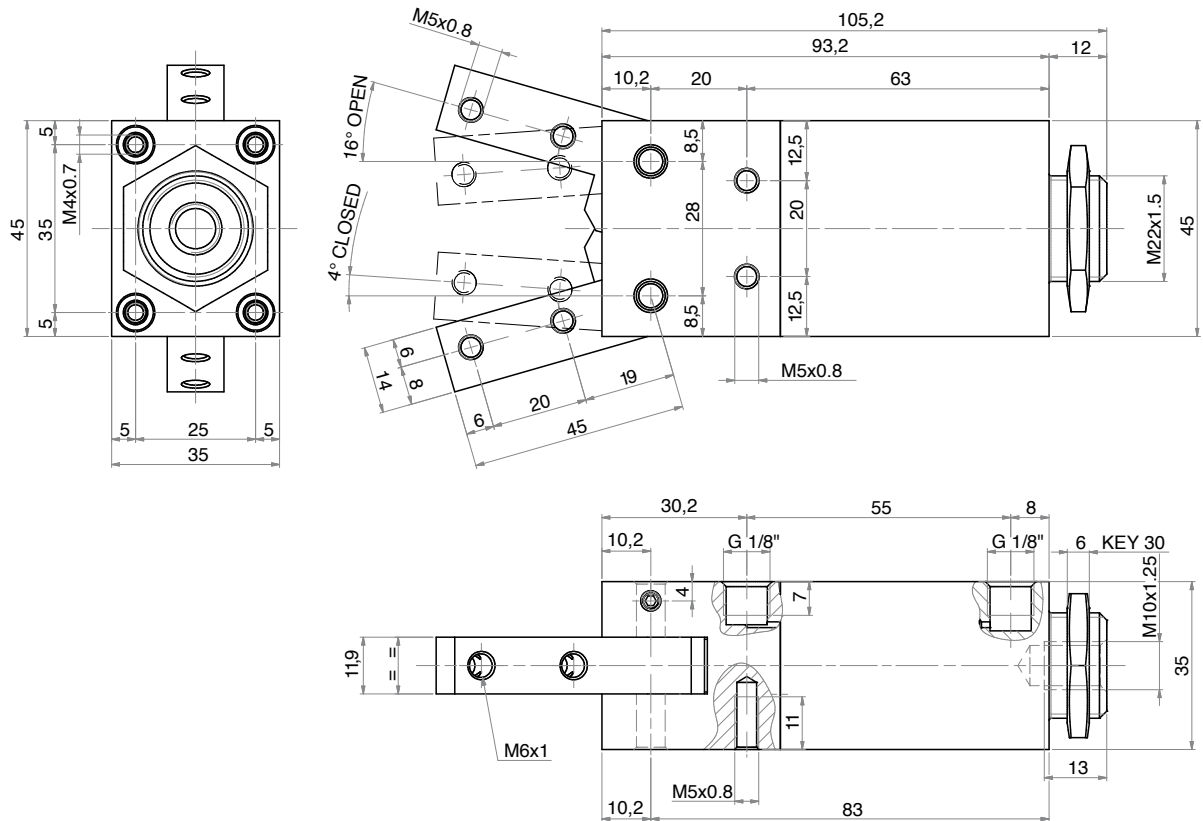
PINZE PNEUMATICHE

M32DE

M32NA

M32NC

PNEUMATIC GRIPPERS



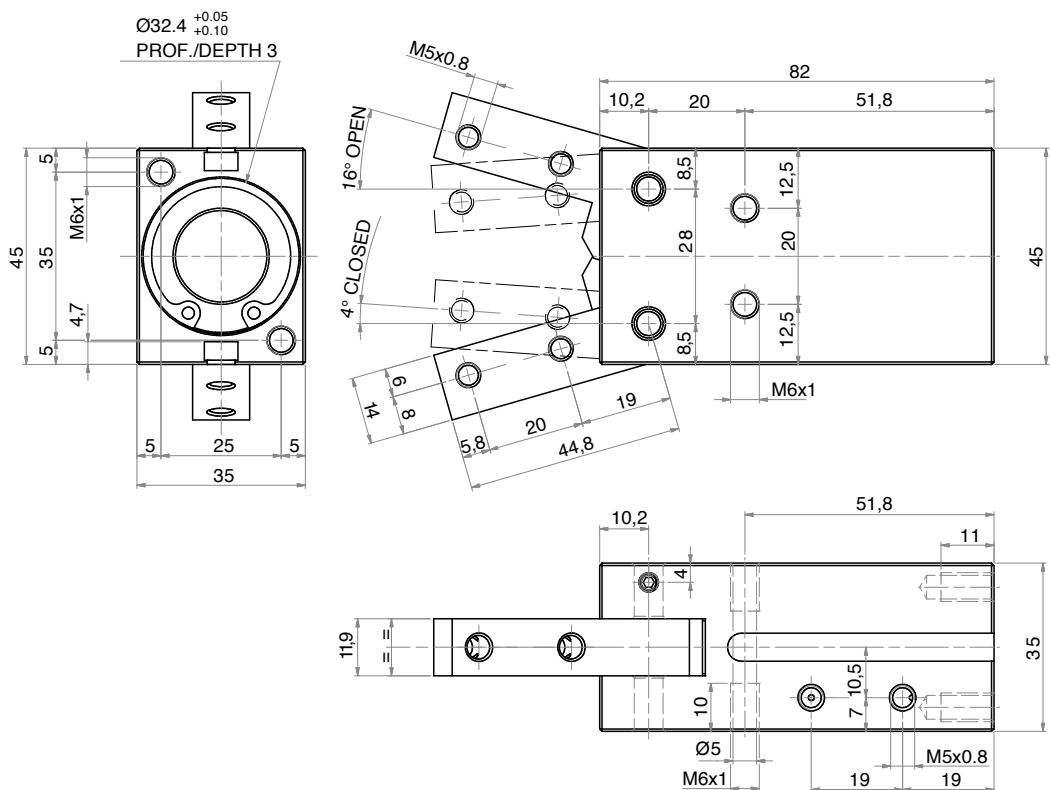
PINZE PNEUMATICHE

M32DEM

M32NAM

M32NCM

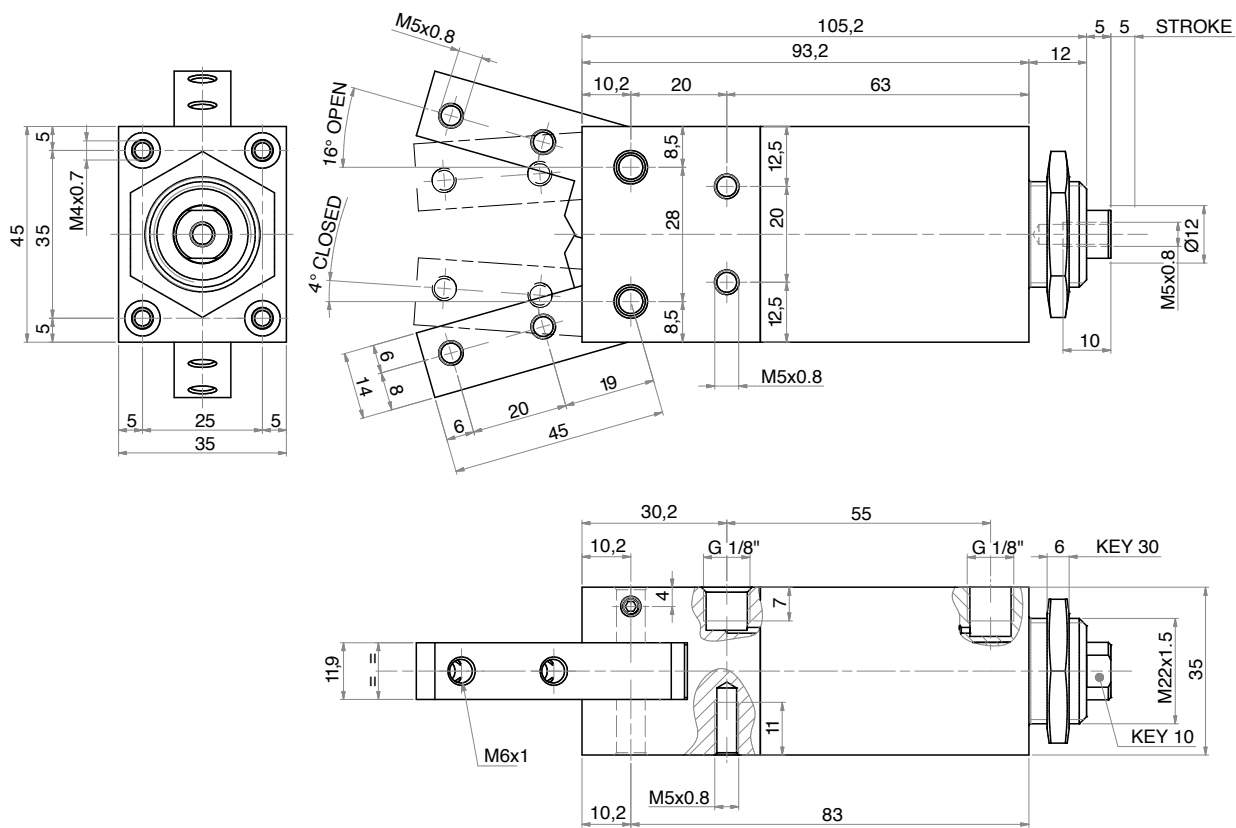
PNEUMATIC GRIPPERS



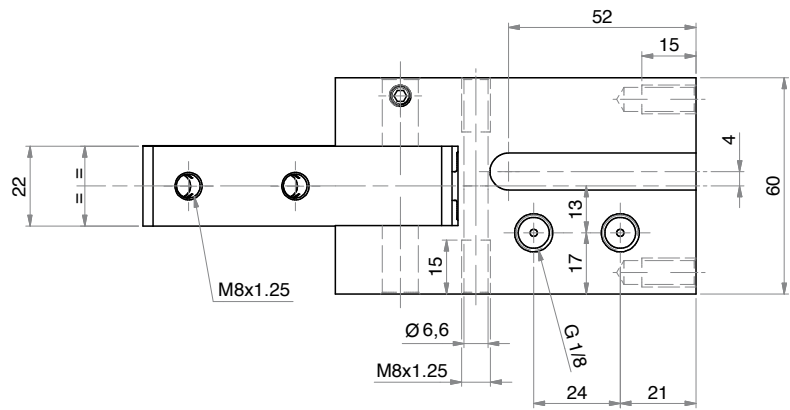
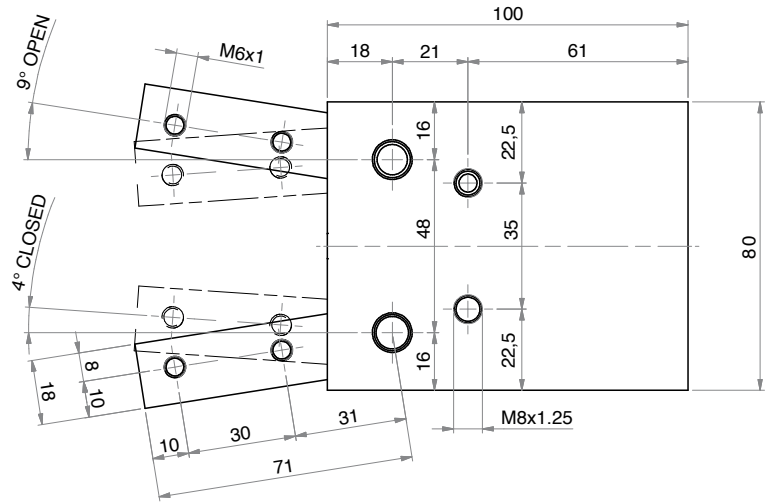
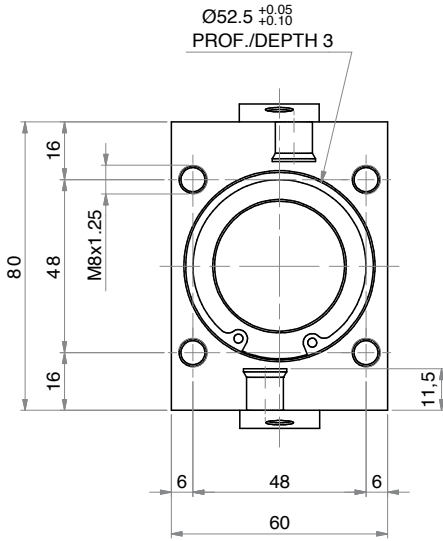
PINZE PNEUMATICHE

M32DEP

PNEUMATIC GRIPPERS



PNEUMATIC GRIPPERS



!!!: Utilizzare sensore magnetico 36.SEN01

!!!: Use magnetic sensor 36.SEN01