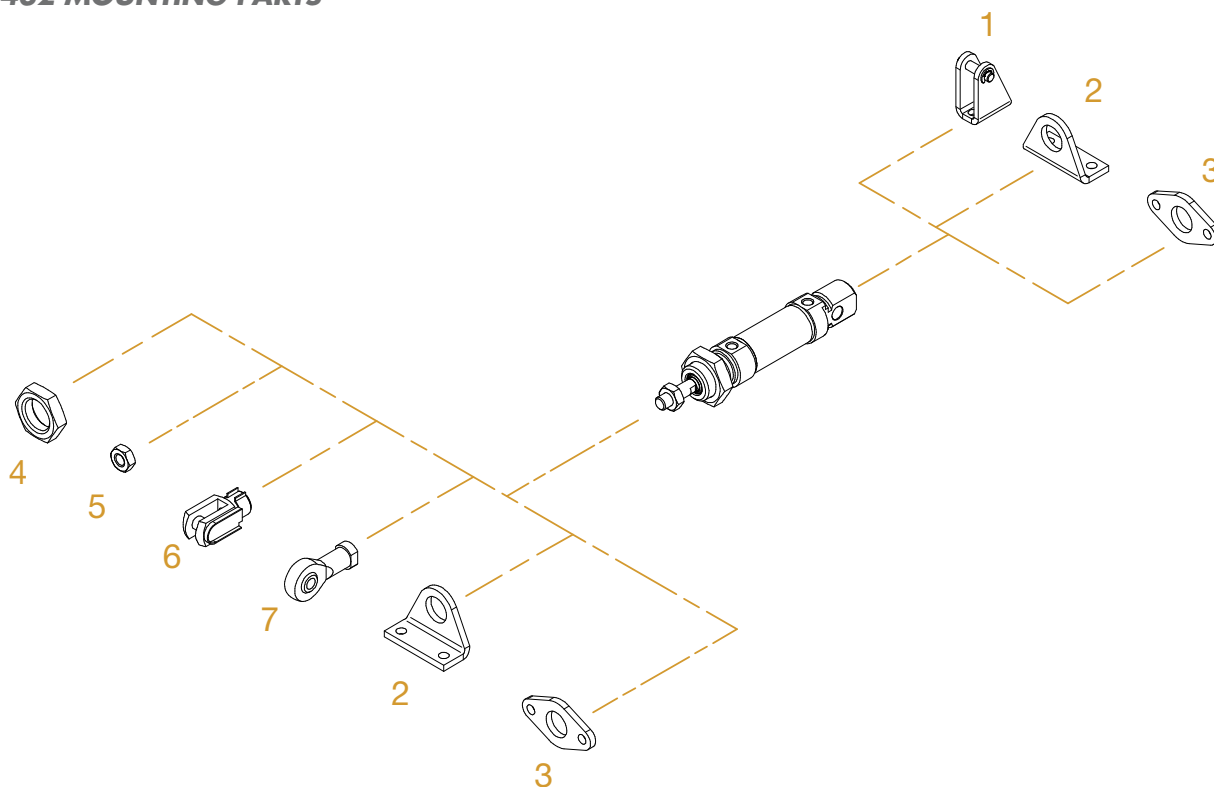


## ACCESSORI DI FISSAGGIO ISO 6432

### ISO 6432 MOUNTING PARTS

ACCESSORI DI FISSAGGIO - MOUNTING PARTS

SERIE

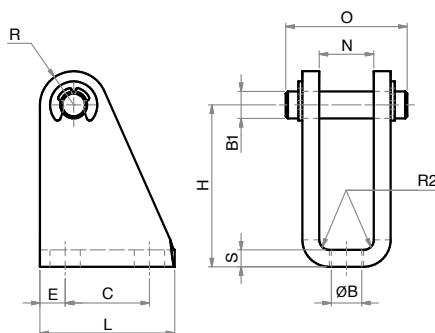


| POS. | CODE                | DESCRIZIONE-DESCRIPTION                       |
|------|---------------------|---|
| 1    | <b>MCFI</b> ---,--- | cerniera con perno - female hinge with pin    |
| 2    | <b>MPBI</b> ---,--- | pedino - foot mounting                        |
| 3    | <b>MFI</b> ---,---  | flangia - flange                              |
| 4    | <b>DAT</b> ---,---  | dado testata - nose nut                       |
| 5    | <b>DA</b> --x---    | dado stelo - rod nut                          |
| 6    | <b>FC</b> --x---    | forcella con clips - clevis with lockable pin |
| 7    | <b>SSFI</b> --x---  | snodo sferico - road eye                      |

## CERNIERA CON PERNO (MP3)

MCFI

### FEMALE HINGE WITH PIN (MP3)



### DIMENSIONI - DIMENSIONS

| COD.      | MCFI008.010 | MCFI012.016 | MCFI020.025 |
|-----------|-------------|-------------|-------------|
| Ø mm      | 8 - 10      | 12 - 16     | 20 - 25     |
| <b>B</b>  | 4,5         | 5,5         | 6,6         |
| <b>B1</b> | 4           | 6           | 8           |
| <b>C</b>  | 12,5        | 15          | 20          |
| <b>E</b>  | 3,75        | 5           | 6           |
| <b>H</b>  | 24          | 27          | 30          |
| <b>L</b>  | 20          | 25          | 32          |
| <b>N</b>  | 8,1         | 12,1        | 16,1        |
| <b>O</b>  | 18          | 24          | 31          |
| <b>R</b>  | 5           | 7           | 10          |
| <b>R2</b> | 1,5         | 1,5         | 2           |
| <b>S</b>  | 2,5         | 3           | 4           |

MATERIALE:  
ACCIAIO ZINCATO  
MATERIAL:  
ZINC COATED STEEL

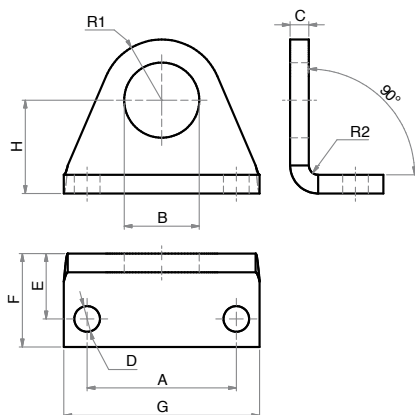
## PIEDINO (MS3)

MPBI

### FOOT MOUNTING (MS3)



MATERIALE: ACCIAIO ZINCATO  
MATERIAL: ZINC COATED STEEL



#### DIMENSIONI - DIMENSIONS

| COD. | MPBI008.010 | MPBI012.016 | MPBI020.025 |
|------|-------------|-------------|-------------|
| Ø mm | 8 - 10      | 12 - 16     | 20 - 25     |
| A    | 25          | 32          | 40          |
| B    | 12          | 16,1        | 22,1        |
| C    | 3           | 4           | 5           |
| D    | 4,5         | 5,5         | 6,6         |
| E    | 11          | 14          | 17          |
| F    | 16          | 20          | 25          |
| G    | 35          | 42          | 54          |
| H    | 16          | 20          | 25          |
| R1   | 10          | 13          | 20          |
| R2   | 1,5         | 2           | 2,5         |

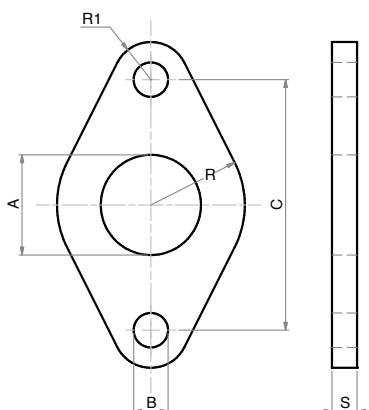
## FLANGIA (MF8)

MFI

### FLANGE (MF8)



MATERIALE: ACCIAIO ZINCATO  
MATERIAL: ZINC COATED STEEL



#### DIMENSIONI - DIMENSIONS

| COD. | MFI008.010 | MFI012.016 | MFI020.025 |
|------|------------|------------|------------|
| Ø mm | 8 - 10     | 12 - 16    | 20 - 25    |
| A    | 12         | 16         | 22         |
| B    | 4,5        | 5,5        | 6,5        |
| C    | 30         | 40         | 50         |
| R    | 11         | 15         | 20         |
| R1   | 5          | 6          | 8          |
| S    | 3          | 4          | 5          |

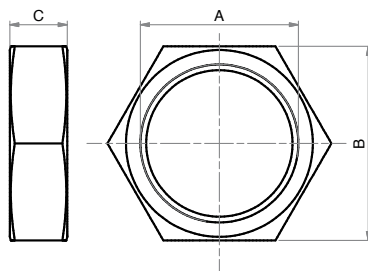
## DADO TESTATA (MR3)

DAT

### NOSE NUT (MR3)



MATERIALE: ACCIAIO ZINCATO  
MATERIAL: ZINC COATED STEEL



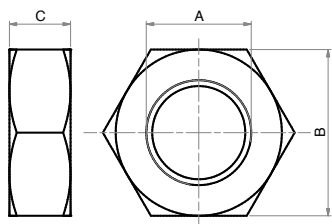
#### DIMENSIONI - DIMENSIONS

| COD. | DAT008.010 | DAT012.016 | DAT020.025 |
|------|------------|------------|------------|
| A    | M12x1,25   | M16x1,5    | M22x1,5    |
| B    | 19         | 22         | 27         |
| C    | 7          | 5          | 8          |

DA

## DADO STELO

### PISTON ROD NUT



MATERIALE: ACCIAIO ZINCATO  
MATERIAL: ZINC COATED STEEL

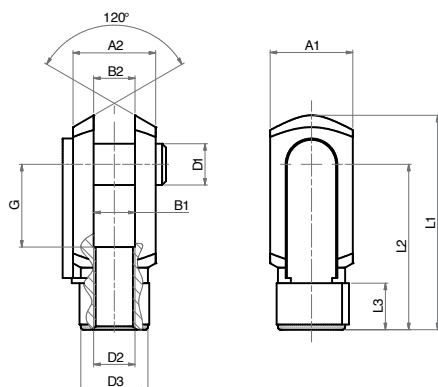
#### DIMENSIONI - DIMENSIONS

| COD. | DA06x1 | DA08x1,25 | DA10x1,25 |
|------|--------|-----------|-----------|
| A    | M6     | M8        | M10x1,25  |
| B    | 10     | 13        | 17        |
| C    | 4      | 5         | 6         |

## FORCELLA CON CLIPS

FC

### CLEVIS WITH LOCKABLE PIN



LA FORNITURA COMPRENDE:  
n° 1 FORCELLA  
n° 1 CLIPS  
THE SUPPLY INCLUDES:  
n° 1 FORK  
n° 1 LOCKABLE PIN

MATERIALE: ACCIAIO ZINCATO  
MATERIAL: ZINC COATED STEEL

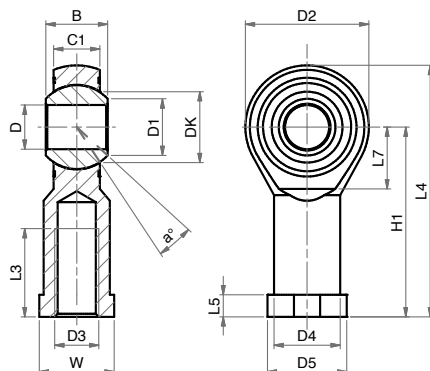
#### DIMENSIONI - DIMENSIONS

| COD. | FC04x0,7 | FC06x1 | FC08x1,25 | FC10x1,25 |
|------|----------|--------|-----------|-----------|
| A1   | 8        | 12     | 16        | 20        |
| A2   | 8        | 12     | 16        | 20        |
| B1   | 4        | 6      | 8         | 10        |
| B2   | 4        | 6      | 8         | 10        |
| G    | 8        | 12     | 16        | 20        |
| L1   | 21       | 31     | 42        | 52        |
| L2   | 16       | 24     | 32        | 40        |
| L3   | 6        | 9      | 12        | 15        |
| ø D1 | 4        | 6      | 8         | 10        |
| ø D2 | M4x0,7   | M6x1   | M8x1,25   | M10x1,25  |
| ø D3 | 8        | 10     | 14        | 18        |

## SNODO SFERICO FILETTO INTERNO

SSFI

### ROD EYE (INTERNAL THREAD)



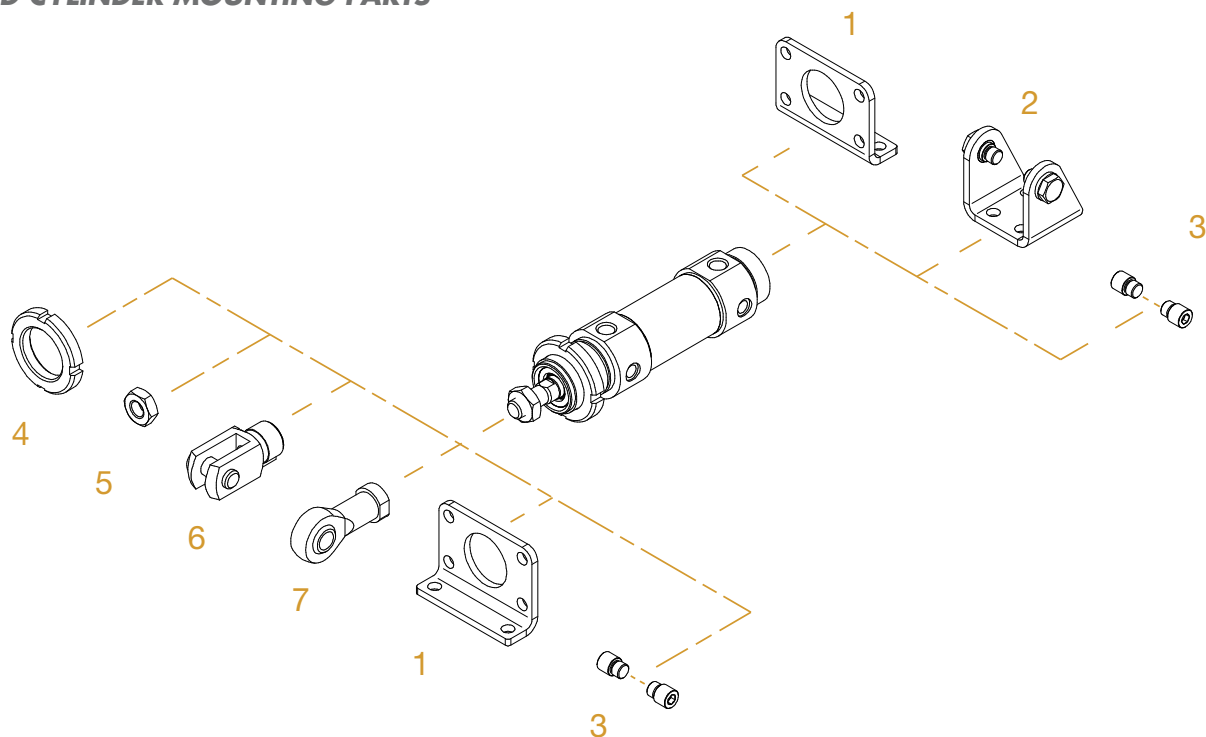
MATERIALE:  
CORPO IN ACCIAIO ZINCATO  
SNODO IN ACCIAIO,  
BRONZO E PTFE  
MATERIAL:  
BODY IN ZINC COATED STEEL  
EYE IN STEEL, BRONZE  
AND PTFE

#### DIMENSIONI - DIMENSIONS

| COD. | SSFI04x0,7 | SSFI06x1 | SSFI08x1,25 | SSFI10x1,25 |
|------|------------|----------|-------------|-------------|
| α°   | 13         | 13       | 14          | 13          |
| B    | 8          | 9        | 12          | 14          |
| C1   | 6          | 6,75     | 9           | 10,5        |
| D1   | 7,7        | 8,9      | 10,4        | 12,9        |
| D2   | 18         | 20       | 24          | 28          |
| D3   | M4         | M6       | M8          | M10x1,25    |
| D4   | 9          | 10       | 12,5        | 15          |
| D5   | 11         | 13       | 16          | 19          |
| DK   | 11,11      | 12,7     | 15,87       | 19,05       |
| D    | 5          | 6        | 8           | 10          |
| H1   | 27         | 30       | 36          | 43          |
| L3   | 10         | 12       | 16          | 20          |
| L4   | 36         | 40       | 48          | 57          |
| L5   | 4          | 5        | 5           | 6,5         |
| L7   | 10         | 11       | 13          | 15          |
| W    | 9          | 11       | 14          | 17          |

## ACCESSORI DI FISSAGGIO CILINDRO TONDO

### ROUND CYLINDER MOUNTING PARTS

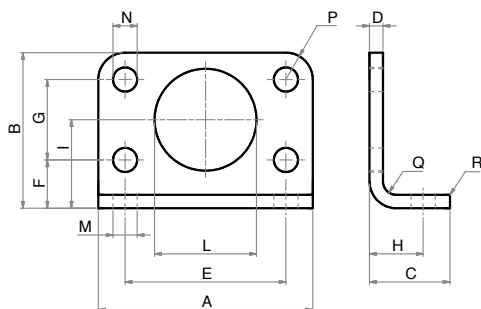


| POS. | CODE              | DESCRIZIONE - DESCRIPTION                     |
|------|-------------------|---|
| 1    | <b>MCFI---</b>    | cerniera con viti - hinge with screws         |
| 2    | <b>MPBI---</b>    | piedino flangia - foot flange                 |
| 3    | <b>MPE---</b>     | perni - pivots                                |
| 4    | <b>GHI---</b>     | ghiera - slotted nut                          |
| 5    | <b>DA--x---</b>   | dado stelo - rod nut                          |
| 6    | <b>FC--x---</b>   | forcella con clips - clevis with lockable pin |
| 7    | <b>SSFI--x---</b> | snodo sferico - road eye                      |

## PIEDINO FLANGIA

MPBI

### FOOT FLANGE



MATERIALE:  
ACCIAIO ZINCATO  
MATERIAL:  
ZINC COATED STEEL

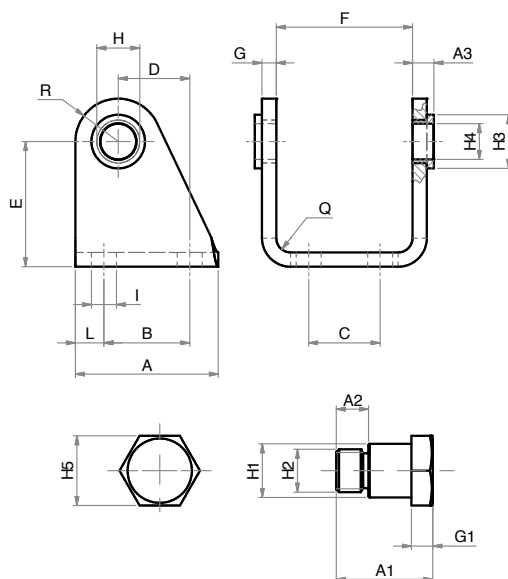
### DIMENSIONI - DIMENSIONS

| COD. | MPBI032 | MPBI040 | MPBI050 | MPBI063 |
|------|---------|---------|---------|---------|
| Ø mm | 32      | 40      | 50      | 63      |
| A    | 66      | 80      | 90      | 96      |
| B    | 49      | 58      | 70      | 80      |
| C    | 21      | 30      | 30      | 30      |
| D    | 4       | 5       | 6       | 6       |
| E    | 52      | 60      | 70      | 76      |
| F    | 14      | 18      | 20      | 20      |
| G    | 28      | 30      | 40      | 50      |
| H    | 14      | 20      | 20      | 20      |
| I    | 28      | 33      | 40      | 45      |
| L    | 30      | 38      | 45      | 45      |
| M    | 7       | 9       | 9       | 9       |
| N    | 7       | 9       | 9       | 9       |
| P    | 7       | 10      | 10      | 10      |
| Q    | 4       | 5       | 6       | 6       |
| R    | 2       | 2       | 2       | 2       |

## CERNIERA CON VITI

MCFI

### HINGE WITH SCREWS



MATERIALE: ACCIAIO ZINCATO  
MATERIAL: ZINC COATED STEEL

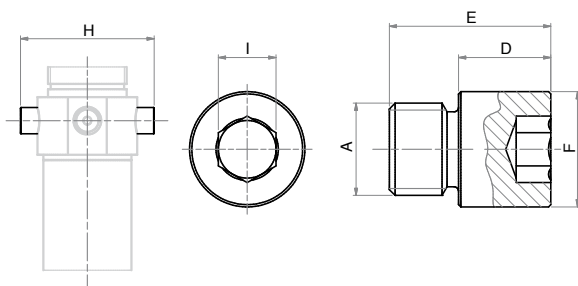
#### DIMENSIONI - DIMENSIONS

| COD. | MCFI032 | MCFI040 | MCFI050 | MCFI063 |
|------|---------|---------|---------|---------|
| Ø mm | 32      | 40      | 50      | 63      |
| A    | 40      | 50      | 54      | 65      |
| A1   | 18      | 21,6    | 26,4    | 31,5    |
| A2   | 6       | 7       | 9       | 13      |
| A3   | 6       | 7       | 8,5     | 8,5     |
| B    | 24      | 30      | 34      | 35      |
| C    | 20      | 28      | 36      | 42      |
| D    | 20      | 27      | 30      | 34      |
| E    | 35      | 40      | 45      | 50      |
| F    | 38,1    | 46,1    | 57,1    | 70,1    |
| G    | 4       | 5       | 6       | 6       |
| G1   | 4       | 5       | 6       | 6       |
| H    | 12      | 15      | 18      | 20      |
| H1   | 10      | 12      | 14      | 16      |
| H2   | M8x1    | M10x1   | M12x1,5 | M14x1,5 |
| H3   | 15      | 20      | 23      | 23      |
| H4   | 10      | 12      | 14      | 16      |
| H5   | 13      | 17      | 19      | 19      |
| I    | 7       | 9       | 9       | 9       |
| L    | 8       | 10      | 10      | 15      |
| P    | 12      | 13      | 14      | 16      |
| Q    | 4       | 5       | 6       | 6       |

## PERNI (COPPIA)

MPE

### PIVOTS (2pcs)



MATERIALE: ACCIAIO ZINCATO  
MATERIAL: ZINC COATED STEEL

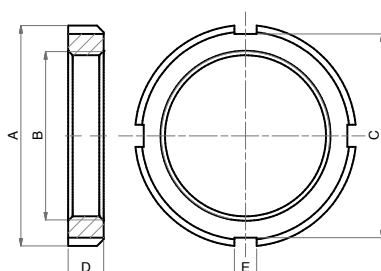
#### DIMENSIONI - DIMENSIONS

| COD. | MPE032 | MPE040 | MPE050  | MPE063  |
|------|--------|--------|---------|---------|
| Ø mm | 32     | 40     | 50      | 63      |
| A    | M8x1   | M10x1  | M12x1,5 | M14x1,5 |
| D    | 8      | 9,5    | 11      | 13      |
| E    | 14     | 16,5   | 20      | 28      |
| F    | 10     | 12     | 14      | 16      |
| I    | 5      | 6      | 6       | 8       |
| H    | 51     | 61     | 75      | 92      |

## GHIERA

GHI

### SLOTTED NUT



MATERIALE: ACCIAIO ZINCATO  
MATERIAL: ZINC COATED STEEL

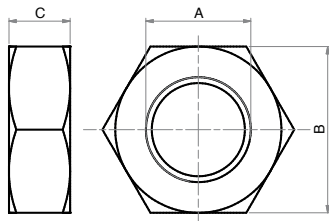
#### DIMENSIONI - DIMENSIONS

| COD. | GHI032  | GHI040  | GHI050.63 |
|------|---------|---------|-----------|
| Ø mm | 32      | 40      | 50 - 63   |
| A    | 45      | 50      | 58        |
| B    | M30x1,5 | M38x1,5 | M45x1,5   |
| C    | 40      | 46      | 52        |
| D    | 7       | 8       | 9         |
| E    | 5       | 5       | 6         |

## DADO STELO

DA

### PISTON ROD NUT



MATERIALE: ACCIAIO ZINCATO  
MATERIAL: ZINC COATED STEEL

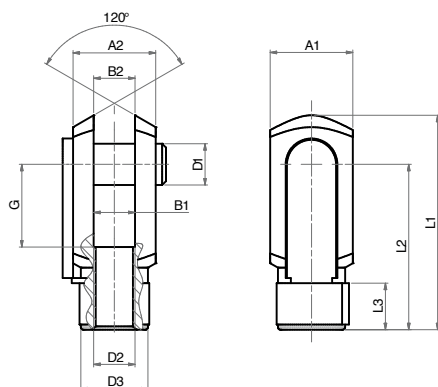
#### DIMENSIONI - DIMENSIONS

| COD. | DA10x1,25 | DA12x1,25 | DA16x1,5 |
|------|-----------|-----------|----------|
| A    | M10x1,25  | M12x1,25  | M16x1,5  |
| B    | 17        | 19        | 24       |
| C    | 6         | 7         | 8        |

## FORCELLA CON CLIPS

FC

### CLEVIS WITH LOCKABLE PIN



LA FORNITURA COMPRENDE:  
n° 1 FORCELLA  
n° 1 CLIPS  
THE SUPPLY INCLUDES:  
n° 1 FORK  
n° 1 LOCKABLE PIN

MATERIALE: ACCIAIO ZINCATO  
MATERIAL: ZINC COATED STEEL

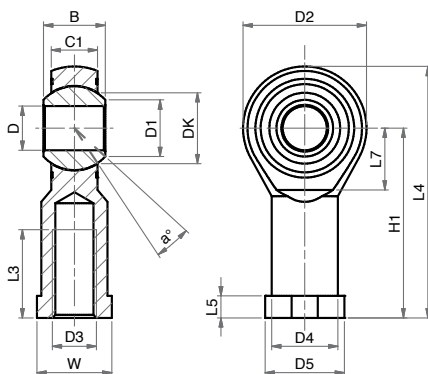
#### DIMENSIONI - DIMENSIONS

| COD. | FC10x1,25 | FC12x1,25 | FC16x1,5 |
|------|-----------|-----------|----------|
| A1   | 20        | 24        | 32       |
| A2   | 20        | 24        | 32       |
| B1   | 10        | 12        | 16       |
| B2   | 10        | 12        | 16       |
| G    | 20        | 24        | 32       |
| L1   | 52        | 62        | 83       |
| L2   | 40        | 48        | 64       |
| L3   | 15        | 18        | 24       |
| ø D1 | 10        | 12        | 16       |
| ø D2 | M10x1,25  | M12x1,25  | M16x1,5  |
| ø D3 | 18        | 20        | 26       |

## SNODO SFERICO FILETTO INTERNO

SSF1

### ROD EYE (INTERNAL THREAD)



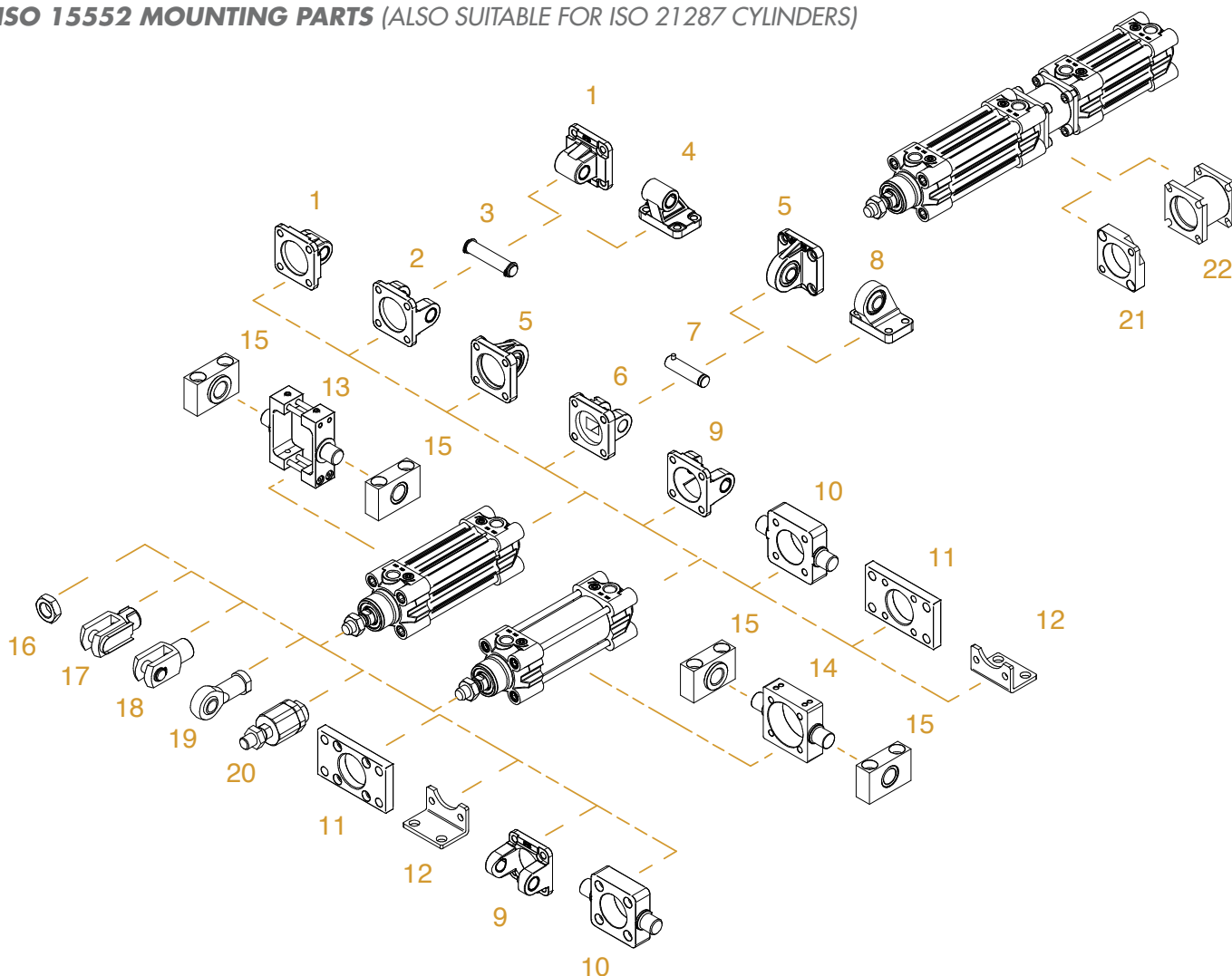
MATERIALE:  
CORPO IN ACCIAIO ZINCATO  
SNODO IN ACCIAIO,  
BRONZO E PTFE  
MATERIAL:  
BODY IN ZINC COATED STEEL  
EYE IN STEEL, BRONZE  
AND PTFE

#### DIMENSIONI - DIMENSIONS

| COD. | SSF10x1,25 | SSF12x1,25 | SSF16x1,5 |
|------|------------|------------|-----------|
| α°   | 13         | 13         | 15        |
| B    | 14         | 16         | 21        |
| C1   | 10,5       | 12         | 15        |
| D1   | 12,9       | 15,4       | 19,3      |
| D2   | 28         | 32         | 42        |
| D3   | M10x1,25   | M12x1,25   | M16x1,5   |
| D4   | 15         | 17,5       | 22        |
| D5   | 19         | 22         | 27        |
| DK   | 19,05      | 22,22      | 28,57     |
| D    | 10         | 12         | 16        |
| H1   | 43         | 50         | 64        |
| L3   | 20         | 22         | 28        |
| L4   | 57         | 66         | 85        |
| L5   | 6,5        | 6,5        | 8         |
| L7   | 15         | 17         | 23        |
| W    | 17         | 19         | 22        |

## ACCESSORI DI FISSAGGIO ISO 15552 (UTILIZZABILI ANCHE PER CILINDRI ISO 21287)

### ISO 15552 MOUNTING PARTS (ALSO SUITABLE FOR ISO 21287 CYLINDERS)



| POS. | CODE    | DESCRIZIONE-DESCRIPTION   |
|------|---------|---|
| 1    | CMI---  | cerniera maschio iso - iso male hinge   |
| 2    | CFI---  | cerniera femmina iso - iso female hinge                                       |
| 3    | PCF---  | perno per cerniera - pin for hinge  |
| 4    | ASI---  | articolazione a squadra iso - iso square hinge                                |
| 5    | CMSI--- | cerniera maschio snodata iso<br>iso male hinge with ball joint                |
| 6    | CFSI--- | cerniera femmina stretta iso<br>iso narrow female hinge                       |
| 7    | PCFS--- | perno per cerniera stretta<br>pin for narrow hinge                            |
| 8    | ASSI--- | articolazione a squadra snodata<br>iso square hinge with ball joint           |
| 9    | CFI---F | cerniera femmina forata iso<br>hollow iso female hinge                        |
| 10   | CIA---  | cerniera anteriore-posteriore lamata<br>front-rear hinge                      |
| 11   | FI---   | flangia iso - iso flange  |
| 12   | PBI---  | piedino basso iso - iso foot mounting   |
| 13   | CICP--- | cerniera intermedia per tubo profilato<br>intermediate hinge for profile tube |
| 14   | CICT--- | cerniera intermedia per tiranti<br>intermediate hinge for tie rod             |
| 15   | SCI---  | supporto cerniera intermedia<br>support for intermediate hinge                |

| POS. | CODE       | DESCRIZIONE-DESCRIPTION   |
|------|------------|---|
| 16   | DA--x---   | dado - nut  |
| 17   | SA--x---   | snodo autoallineante - self-aligning joint                                  |
| 18   | SSFI--x--- | snodo sferico - swivel ball joint   |
| 19   | FC--x---   | forcella con clips - clevis with lockable pin                               |
| 20   | FP--x---   | forcella con perno - clevis with pin  |
| 21   | FLTI---    | flangia cilindri tandem e più posizioni<br>tandem and multi-position flange |
| 22   | FLCI---    | flangia cilindri contrapposti<br>rear opposed cylinder flange               |
| 15   | SCI---     | supporto cerniera intermedia<br>support for intermediate hinge              |

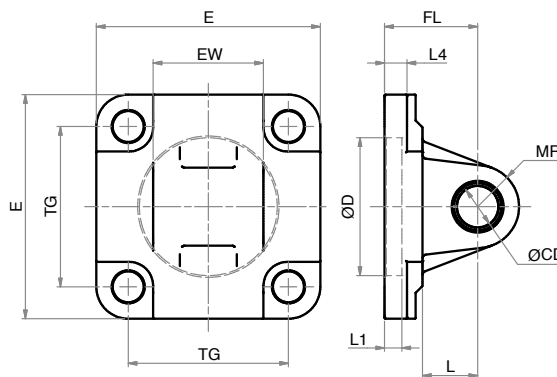
Fissaggi forniti con viti - Mounting supplied with screws

| POS.  | CODE        | DESCRIZIONE-DESCRIPTION                 |
|-------|-------------|---|
| 2+3   | CFI--- S006 | kit CFI+PCF - CFI+PCF kit               |
| 1+2+3 | W--- S002   | kit CMI+CFI+PCF - CMI+CFI+PCF kit       |
| 2+3+4 | W--- S003   | kit CFI+PCF+ASI - CFI+PCF+ASI kit       |
| 5+6+7 | W--- S005   | kit CMSI+CFSI+PCFS - CMSI+CFSI+PCFS kit |
| 6+7+8 | W--- S001   | kit CFSI+PCFS+ASSI - CFSI+PCFS+ASSI kit |

## CERNIERA MASCHIO ISO (MP4)

CMI

### ISO MALE HINGE (MP4)



LA FORNITURA COMPRENDE:  
n° 1 CERNIERA MASCHIO  
n° 4 VITI  
THE SUPPLY INCLUDES:  
n° 1 MALE HINGE  
n° 4 SCREWS

MATERIALE:  
CORPO IN ALLUMINIO  
BOCCOLA IN ACCIAIO E PTFE  
MATERIAL:  
BODY IN ALUMINIUM  
BUSH IN STEEL AND PTFE

### DIMENSIONI - DIMENSIONS

| COD. | CMI032 | CMI040 | CMI050 | CMI063 | CMI080 | CMI100 | CMI125 | CMI160 | CMI200 |
|------|--------|--------|--------|--------|--------|--------|--------|--------|--------|
| Ø    | 32     | 40     | 50     | 63     | 80     | 100    | 125    | 160    | 200    |
| EW   | 26     | 28     | 32     | 40     | 50     | 60     | 70     | 90     | 90     |
| E    | 45     | 52     | 65     | 75     | 93     | 110    | 134    | 180    | 220    |
| FL   | 22     | 25     | 27     | 32     | 36     | 41     | 50     | 55     | 60     |
| L1   | 5      | 5      | 5      | 5      | 5      | 5      | 7      | 7      | 7      |
| L4   | 5,5    | 5,5    | 6,5    | 6,5    | 10     | 10     | 10     | 10     | 11     |
| L    | 13     | 16     | 16     | 21     | 22     | 27     | 30     | 35     | 35     |
| MR   | 10     | 12     | 12     | 16     | 16     | 20     | 25     | 25     | 25     |
| Ø CD | 10     | 12     | 12     | 16     | 16     | 20     | 25     | 30     | 30     |
| Ø D  | 30     | 35     | 40     | 45     | 45     | 55     | 60     | 65     | 75     |
| TG   | 32,5   | 38     | 46,5   | 56,5   | 72     | 89     | 110    | 140    | 175    |

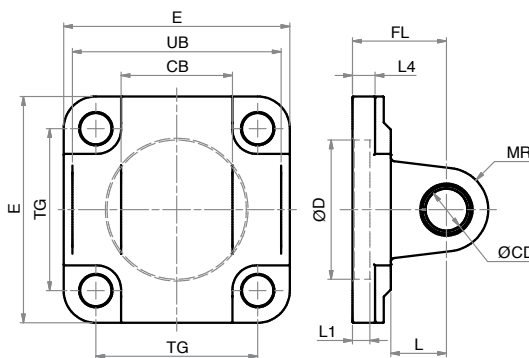
A richiesta - On request Ø 250-320

CFI

CFI-F

## CERNIERA FEMMINA ISO (MP2)

### ISO FEMALE HINGE (MP2)



LA FORNITURA COMPRENDE:  
n° 1 CERNIERA FEMMINA  
n° 4 VITI  
THE SUPPLY INCLUDES:  
n° 1 FEMALE HINGE  
n° 4 SCREWS

MATERIALE:  
CORPO IN ALLUMINIO  
BOCCOLA IN ACCIAIO E PTFE  
MATERIAL:  
BODY IN ALUMINIUM  
BUSH IN STEEL AND PTFE

### DIMENSIONI - DIMENSIONS

| COD. | CFI032 | CFI040 | CFI050 | CFI063 | CFI080 | CFI100 | CFI125 | CFI160 | CFI200 |
|------|--------|--------|--------|--------|--------|--------|--------|--------|--------|
| Ø    | 32     | 40     | 50     | 63     | 80     | 100    | 125    | 160    | 200    |
| CB   | 26     | 28     | 32     | 40     | 50     | 60     | 70     | 90     | 90     |
| E    | 45     | 52     | 65     | 75     | 93     | 110    | 134    | 180    | 220    |
| FL   | 22     | 25     | 27     | 32     | 36     | 41     | 50     | 55     | 60     |
| L1   | 5      | 5      | 5      | 5      | 5      | 5      | 7      | 7      | 7      |
| L4   | 5,5    | 5,5    | 6,5    | 6,5    | 10     | 10     | 10     | 10     | 11     |
| L    | 13     | 16     | 16     | 21     | 22     | 27     | 30     | 35     | 35     |
| MR   | 10     | 12     | 12     | 16     | 16     | 20     | 25     | 25     | 25     |
| Ø CD | 10     | 12     | 12     | 16     | 16     | 20     | 25     | 30     | 30     |
| Ø D  | 30     | 35     | 40     | 45     | 45     | 55     | 60     | 65     | 75     |
| TG   | 32,5   | 38     | 46,5   | 56,5   | 72     | 89     | 110    | 140    | 175    |
| UB   | 45     | 52     | 60     | 70     | 90     | 110    | 130    | 170    | 170    |

A richiesta - On request Ø 250-320

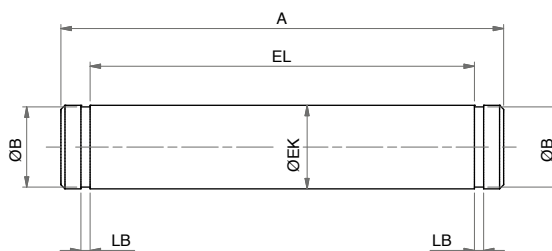
CFI-F dimensione foro centrale uguale alla quota ØD - CFI-F dimension of the central hole are the same as ØD



## PERNO PER CERNIERA (AA4)

PCF

### PIN FOR HINGE (AA4)



LA FORNITURA COMPRENDE:  
n°1 PERNO  
n°2 SEEGER  
THE SUPPLY INCLUDES:  
n°1 PIN  
n°2 RETAINING RING

MATERIALE:  
ACCIAIO ZINCATO  
MATERIAL:  
ZINC COATED STEEL

### DIMENSIONI - DIMENSIONS

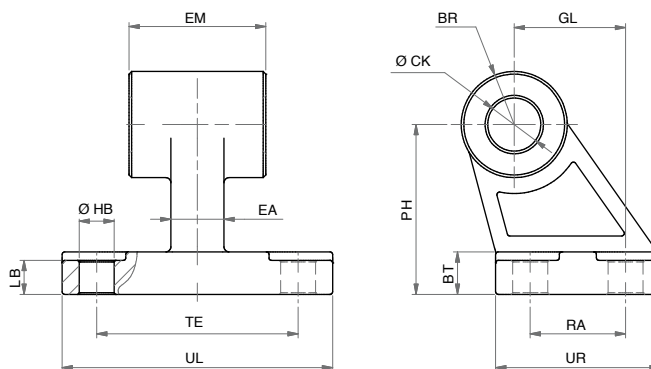
| COD. | PCF032 | PCF040 | PCF050 | PCF063 | PCF080 | PCF100 | PCF125 | PCF160.200 |
|------|--------|--------|--------|--------|--------|--------|--------|------------|
| Ø    | 32     | 40     | 50     | 63     | 80     | 100    | 125    | 160-200    |
| A    | 53     | 60     | 68     | 78     | 98     | 118    | 139    | 180        |
| EL   | 46     | 53     | 61     | 71     | 91     | 111    | 132    | 172        |
| LB   | 1,1    | 1,1    | 1,1    | 1,1    | 1,1    | 1,3    | 1,3    | 1,6        |
| Ø B  | 9,6    | 11,5   | 11,5   | 15,2   | 15,2   | 19     | 23,9   | 28,6       |
| Ø EK | 10     | 12     | 12     | 16     | 16     | 20     | 25     | 30         |

A richiesta - On request Ø 250-320

## ARTICOLAZIONE A SQUADRA ISO (AB7)

ASI

### ISO SQUARE HINGE (AB7)

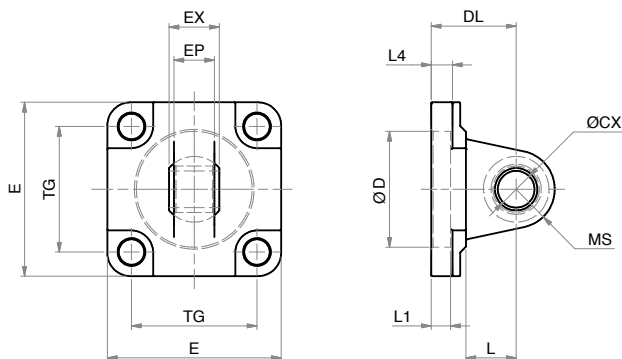


LA FORNITURA COMPRENDE:  
n°1 ARTICOLAZIONE A SQUADRA  
THE SUPPLY INCLUDES:  
n°1 SQUARE HINGE

MATERIALE:  
CORPO IN ALLUMINIO  
BOCCOLA IN ACCIAIO E PTFE  
MATERIAL:  
BODY IN ALUMINIUM  
BUSH IN STEEL AND PTFE

### DIMENSIONI - DIMENSIONS

| COD. | ASI032 | ASI040 | ASI050 | ASI063 | ASI080 | ASI100 | ASI125 | ASI160 | ASI200 |
|------|--------|--------|--------|--------|--------|--------|--------|--------|--------|
| Ø    | 32     | 40     | 50     | 63     | 80     | 100    | 125    | 160    | 200    |
| BR   | 10     | 11     | 13     | 15     | 15     | 19     | 22,5   | 31,5   | 31,5   |
| BT   | 8      | 10     | 12     | 14     | 14     | 17     | 20     | 25     | 30     |
| Ø CK | 10     | 12     | 12     | 16     | 16     | 20     | 25     | 30     | 30     |
| EA   | 10     | 15     | 16     | 16     | 20     | 20     | 30     | 36     | 40     |
| EM   | 26     | 28     | 32     | 40     | 50     | 60     | 70     | 90     | 90     |
| GL   | 21     | 24     | 33     | 37     | 47     | 55     | 70     | 97     | 105    |
| LB   | 6,4    | 8,4    | 10,4   | 12,4   | 11,5   | 14,5   | 16,8   | 21     | 26     |
| Ø HB | 6,6    | 6,6    | 9      | 9      | 11     | 11     | 14     | 14     | 18     |
| PH   | 32     | 36     | 45     | 50     | 63     | 71     | 90     | 115    | 135    |
| RA   | 18     | 22     | 30     | 35     | 40     | 50     | 60     | 88     | 90     |
| TE   | 38     | 41     | 50     | 52     | 66     | 76     | 94     | 118    | 122    |
| UL   | 51     | 54     | 65     | 67     | 86     | 96     | 124    | 156    | 162    |
| UR   | 31     | 35     | 45     | 50     | 60     | 70     | 90     | 126    | 130    |

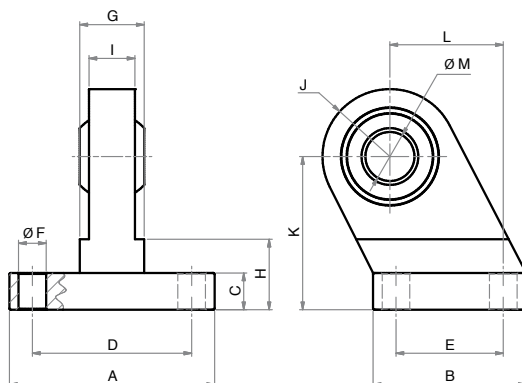
**CERNIERA MASCHIO SNODATA ISO (MP6)**
**CMSI**
**ISO MALE HINGE WITH BALL JOINT (MP6)**


LA FORNITURA COMPRENDE:  
n° 1 CERNIERA MASCHIO  
n° 4 VITI  
THE SUPPLY INCLUDES:  
n° 1 MALE HINGE  
n° 4 SCREWS

MATERIALE:  
CORPO IN ALLUMINIO  
SNODO IN ACCIAIO,  
BRONZO E PTFE  
MATERIAL:  
BODY IN ALUMINIUM  
EYE IN STEEL, BRONZE AND  
PTFE

**DIMENSIONI - DIMENSIONS**

| COD. | CMSI032 | CMSI040 | CMSI050 | CMSI063 | CMSI080 | CMSI100 | CMSI125 | CMSI160 | CMSI200 |
|------|---------|---------|---------|---------|---------|---------|---------|---------|---------|
| Ø    | 32      | 40      | 50      | 63      | 80      | 100     | 125     | 160     | 200     |
| DL   | 22      | 25      | 27      | 32      | 36      | 41      | 50      | 55      | 60      |
| EP   | 10,5    | 12      | 15      | 15      | 18      | 18      | 25      | 30      | 30      |
| EX   | 14      | 16      | 21      | 21      | 25      | 25      | 37      | 43      | 43      |
| E    | 45      | 52      | 65      | 75      | 95      | 115     | 140     | 195     | 238     |
| L1   | 7       | 7       | 7       | 7       | 9       | 9       | 9       | 7       | 7       |
| L4   | 5,5     | 5,5     | 6,5     | 6,5     | 10      | 10      | 10      | 10      | 11      |
| L    | 12      | 15      | 15      | 20      | 20      | 25      | 30      | 35      | 35      |
| MS   | 16      | 18      | 21      | 23      | 28      | 30      | 40      | 44      | 47      |
| ØCX  | 10      | 12      | 16      | 16      | 20      | 20      | 30      | 35      | 35      |
| ØD   | 30      | 35      | 40      | 45      | 45      | 55      | 60      | 65      | 75      |
| TG   | 32,5    | 38      | 46,5    | 56,5    | 72      | 89      | 110     | 140     | 175     |

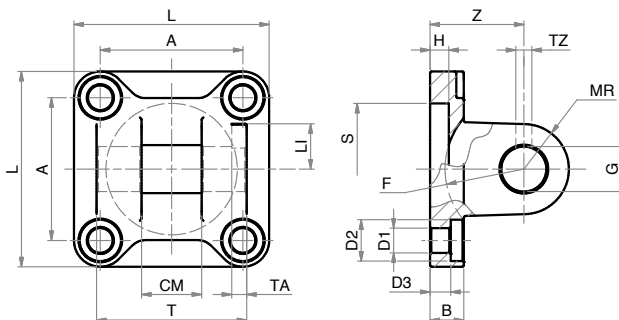
**ARTICOLAZIONE A SQUADRA SNODATA**
**ASSI**
**ISO SQUARE HINGE WITH BALL JOINT**


LA FORNITURA COMPRENDE:  
n° 1 ARTICOLAZIONE A  
SQUADRA  
n° 4 VITI  
THE SUPPLY INCLUDES:  
n° 1 SQUARE HINGE  
n° 4 SCREWS

MATERIALE:  
CORPO IN ALLUMINIO  
SNODO IN ACCIAIO,  
BRONZO E PTFE  
MATERIAL:  
BODY IN ALUMINIUM  
EYE IN STEEL, BRONZE AND  
PTFE

**DIMENSIONI - DIMENSIONS**

| COD. | ASSI032 | ASSI040 | ASSI050 | ASSI063 | ASSI080 | ASSI100 |
|------|---------|---------|---------|---------|---------|---------|
| Ø    | 32      | 40      | 50      | 63      | 80      | 100     |
| A    | 51      | 54      | 65      | 67      | 86      | 96      |
| B    | 31      | 35      | 45      | 50      | 60      | 70      |
| C    | 10      | 10      | 12      | 12      | 14      | 15      |
| D    | 38      | 41      | 50      | 52      | 66      | 76      |
| E    | 18      | 22      | 30      | 35      | 40      | 50      |
| G    | 14      | 16      | 21      | 21      | 25      | 25      |
| H    | 16      | 16      | 21      | 23      | 32      | 33      |
| I    | 10,5    | 12      | 15      | 15      | 18      | 18      |
| J    | 15      | 17      | 20      | 22      | 27      | 29      |
| K    | 32      | 36      | 45      | 50      | 63      | 71      |
| L    | 21      | 24      | 33      | 37      | 47      | 55      |
| ØF   | 6,6     | 6,6     | 9       | 9       | 11      | 11      |
| ØM   | 10      | 12      | 16      | 16      | 20      | 20      |

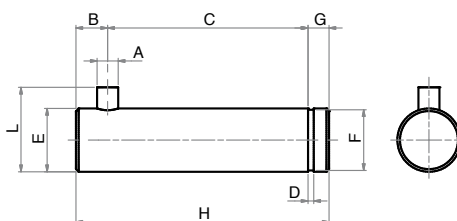
**CERNIERA FEMMINA STRETTA ISO (AB6)**
**ISO NARROW FEMALE HINGE (AB6)**


LA FORNITURA COMPRENDE:  
 n° 1 CERNIERA FEMMINA  
 n° 4 VITI  
 THE SUPPLY INCLUDES:  
 n° 1 FEMALE HINGE  
 n° 4 SCREWS

MATERIALE: ALLUMINO  
 MATERIAL: ALUMINIUM

**DIMENSIONI - DIMENSIONS**

| COD.   | CFSI032 | CFSI040 | CFSI050 | CFSI063 | CFSI080 | CFSI100 | CFSI125 | CFSI160 | CFSI200 |
|--------|---------|---------|---------|---------|---------|---------|---------|---------|---------|
| Ø      | 32      | 40      | 50      | 63      | 80      | 100     | 125     | 160     | 200     |
| A      | 32,5    | 38      | 46,5    | 56,5    | 72      | 89      | 110     | 140     | 175     |
| B      | 9       | 9       | 1       | 1       | 14      | 14      | 20      | 20      | 25      |
| CM     | 14      | 16      | 21      | 21      | 25      | 25      | 37      | 43      | 43      |
| D1     | 6,6     | 6,6     | 9       | 9       | 11      | 11      | 14      | 18      | 18      |
| D2     | 11      | 11      | 15      | 15      | 18      | 18      | 20      | 26      | 26      |
| D3     | 5,5     | 5,5     | 6,5     | 6,5     | 10      | 10      | 10      | 10      | 11      |
| F min. | 17      | 20      | 22      | 25      | 30      | 32      | 42      | 46      | 49      |
| G      | 10      | 12      | 16      | 16      | 20      | 20      | 30      | 35      | 35      |
| H      | 5       | 5       | 5       | 5       | 5       | 5       | 7       | 7       | 7       |
| LI     | 11,5    | 12      | 14      | 14      | 16      | 16      | 24      | 26,5    | 26,5    |
| L      | 45      | 52      | 65      | 75      | 95      | 115     | 140     | 180     | 220     |
| MR     | 10      | 12      | 14      | 18      | 20      | 22      | 25      | 30      | 30      |
| S      | 30      | 35      | 40      | 45      | 45      | 55      | 60      | 65      | 75      |
| TA     | 3       | 4       | 4       | 4       | 4       | 4       | 6       | 6       | 6       |
| TZ     | 3,3     | 4,3     | 4,3     | 4,3     | 4,3     | 6,3     | 6,3     | 6,3     | 6,3     |
| T      | 34      | 40      | 45      | 51      | 65      | 75      | 97      | 122     | 122     |
| Z      | 22      | 25      | 27      | 32      | 36      | 41      | 50      | 55      | 60      |

**PERNO PER CERNIERA STRETTA (AA6)**
**PIN FOR NARROW HINGE (AA6)**


LA FORNITURA COMPRENDE:  
 n° 1 PERNO  
 n° 1 SEEGER  
 THE SUPPLY INCLUDES:  
 n° 1 PIN  
 n° 1 RETAINING RING

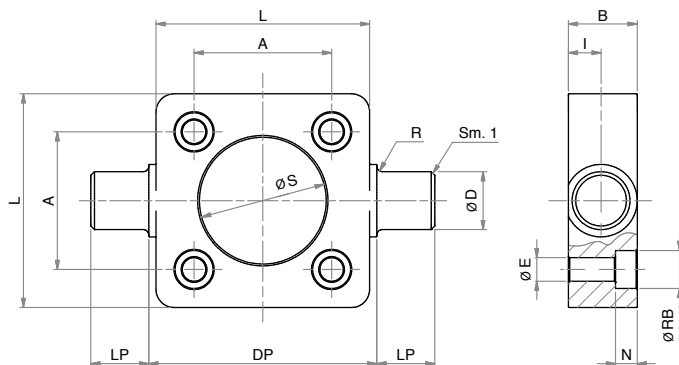
MATERIALE:  
 ACCIAIO ZINCATO  
 MATERIAL:  
 ZINC COATED STEEL

**DIMENSIONI - DIMENSIONS**

| COD.  | PCFS032 | PCFS040 | PCFS050 | PCFS063 | PCFS080 | PCFS100 | PCFS125 | PCFS160 | PCFS200 |
|-------|---------|---------|---------|---------|---------|---------|---------|---------|---------|
| Ø CIL | 32      | 40      | 50      | 63      | 80      | 100     | 125     | 160     | 200     |
| A     | 3       | 4       | 4       | 4       | 4       | 4       | 6       | 6       | 6       |
| B     | 4,5     | 6       | 6       | 6       | 6       | 6       | 9       | 9       | 9       |
| D     | 1,1     | 1,1     | 1,1     | 1,1     | 1,3     | 1,3     | 1,6     | 1,6     | 1,6     |
| E     | 10      | 12      | 16      | 16      | 20      | 20      | 30      | 35      | 35      |
| F     | 9,6     | 11,5    | 15,2    | 15,2    | 19      | 19      | 28,6    | 33      | 33      |
| G     | 4       | 4       | 5       | 5       | 6       | 6       | 7       | 7       | 7       |
| H     | 41      | 48      | 54      | 60      | 75      | 85      | 110     | 135     | 135     |
| L     | 14      | 16      | 20      | 20      | 24      | 24      | 36      | 41      | 41      |

**CERNIERA ANTERIORE-POSTERIORE LAMATA**

CIA

**FRONT-REAR HINGE**


LA FORNITURA COMPRENDE:  
n° 1 CERNIERA  
n° 4 VITI  
THE SUPPLY INCLUDES:  
n° 1 HINGE  
n° 4 SCREWS

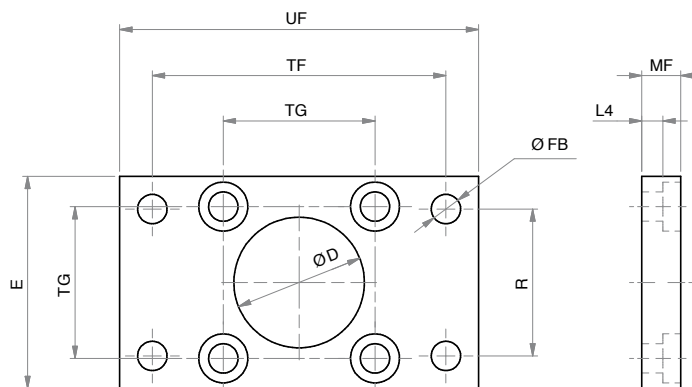
MATERIALE:  
ACCIAIO ZINCATO  
MATERIAL:  
ZINC COATED STEEL

**DIMENSIONI - DIMENSIONS**

| COD. | CIA032 | CIA040 | CIA050 | CIA063 | CIA080 | CIA100 |
|------|--------|--------|--------|--------|--------|--------|
| Ø    | 32     | 40     | 50     | 63     | 80     | 100    |
| A    | 32,5   | 38     | 46,5   | 56,5   | 72     | 89     |
| B    | 14     | 19     | 19     | 24     | 24     | 29     |
| Ø D  | 12     | 16     | 16     | 20     | 20     | 25     |
| DP   | 50     | 63     | 75     | 90     | 110    | 132    |
| ØE   | 6,5    | 6,5    | 8,5    | 8,5    | 10,5   | 10,5   |
| I    | 6,5    | 9      | 9      | 11,5   | 11,5   | 14     |
| L    | 46     | 59     | 69     | 84     | 102    | 125    |
| LP   | 12     | 16     | 16     | 20     | 20     | 25     |
| N    | 6      | 6      | 8      | 8      | 10     | 10     |
| R    | 1      | 1,5    | 1,6    | 1,6    | 1,6    | 2      |
| Ø RB | 10,5   | 10,5   | 13,5   | 13,5   | 16,5   | 16,5   |
| Ø S  | 30     | 35     | 40     | 45     | 45     | 55     |

**FLANGIA ISO (MF1 - MF2)**

FI

**ISO FLANGE (MF1 - MF2)**


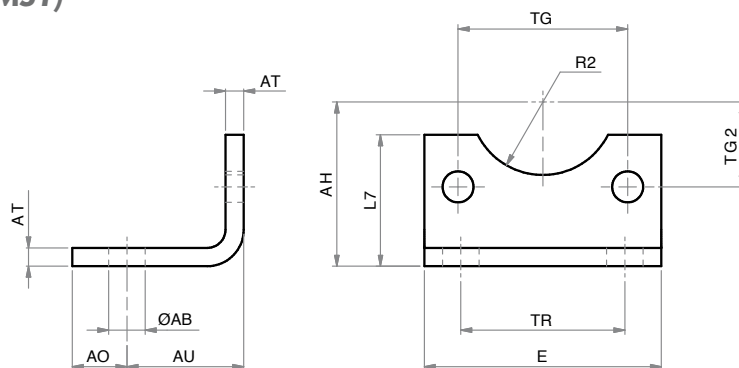
LA FORNITURA COMPRENDE:  
n° 1 FLANGIA  
n° 4 VITI  
THE SUPPLY INCLUDES:  
n° 1 FLANGE  
n° 4 SCREWS

MATERIALE:  
ACCIAIO ZINCATO  
MATERIAL:  
ZINC COATED STEEL

**DIMENSIONI - DIMENSIONS**

| COD. | FI032 | FI040 | FI050 | FI063 | FI080 | FI100 | FI125 | FI160 | FI200 |
|------|-------|-------|-------|-------|-------|-------|-------|-------|-------|
| Ø    | 32    | 40    | 50    | 63    | 80    | 100   | 125   | 160   | 200   |
| E    | 45    | 52    | 65    | 75    | 95    | 115   | 140   | 180   | 220   |
| L4   | 5     | 5     | 6,5   | 6,5   | 9     | 9     | 10,5  | 9,5   | 12,5  |
| MF   | 10    | 10    | 12    | 12    | 16    | 16    | 20    | 20    | 25    |
| Ø D  | 30    | 35    | 40    | 45    | 45    | 55    | 60    | 65    | 75    |
| Ø FB | 7     | 9     | 9     | 9     | 12    | 14    | 16    | 18    | 22    |
| R    | 32    | 36    | 45    | 50    | 63    | 75    | 90    | 115   | 135   |
| TF   | 64    | 72    | 90    | 100   | 126   | 150   | 180   | 230   | 270   |
| TG   | 32,5  | 38    | 46,5  | 56,5  | 72    | 89    | 110   | 140   | 175   |
| UF   | 80    | 90    | 110   | 120   | 150   | 170   | 205   | 260   | 300   |

A richiesta - On request Ø 250-320

**PIEDINO BASSO ISO (MS1)**
**ISO FOOT MOUNTING (MS1)**


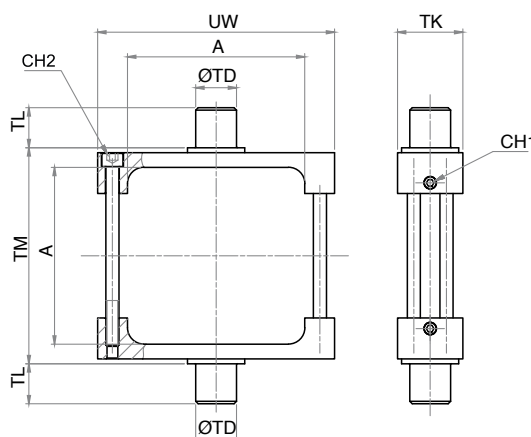
LA FORNITURA COMPRENDE:  
 n° 1 PIEDINO  
 n° 2 VITI  
 THE SUPPLY INCLUDES:  
 n° 1 FOOT MOUNTING  
 n° 2 SCREWS

MATERIALE:  
 ACCIAIO ZINCATO  
 MATERIAL:  
 ZINC COATED STEEL

**DIMENSIONI - DIMENSIONS**

| COD. | PBI032 | PBI040 | PBI050 | PBI063 | PBI080 | PBI100 | PBI125 | PBI160 | PBI200 |
|------|--------|--------|--------|--------|--------|--------|--------|--------|--------|
| Ø    | 32     | 40     | 50     | 63     | 80     | 100    | 125    | 160    | 200    |
| AH   | 32     | 36     | 45     | 50     | 63     | 71     | 90     | 115    | 135    |
| AO   | 11     | 8      | 15     | 13     | 14     | 16     | 25     | 15     | 30     |
| AT   | 4      | 4      | 5      | 5      | 6      | 6      | 8      | 10     | 12     |
| AU   | 24     | 28     | 32     | 32     | 41     | 41     | 45     | 60     | 70     |
| E    | 45     | 52     | 65     | 75     | 95     | 115    | 140    | 180    | 220    |
| L7   | 30     | 30     | 36     | 35     | 47     | 53     | 70     | 100    | 109    |
| Ø AB | 7      | 10     | 10     | 10     | 12     | 14,5   | 16,5   | 18,5   | 24     |
| R2   | 15     | 17,5   | 20     | 22,5   | 22,5   | 27,5   | 30     | 32,5   | 37,5   |
| TG2  | 16,25  | 19     | 23,25  | 28,25  | 36     | 44,5   | 55     | 70     | 87,5   |
| TG   | 32,5   | 38     | 46,5   | 56,5   | 72     | 89     | 110    | 140    | 175    |
| TR   | 32     | 36     | 45     | 50     | 63     | 75     | 90     | 115    | 135    |

A richiesta - On request Ø 250-320

**CERNIERA INTERMEDIA PER TUBO PROFILATO**
**INTERMEDIATE HINGE FOR PROFILE TUBE**


LA FORNITURA COMPRENDE:  
 n° 1 PIEDINO  
 n° 2 VITI  
 THE SUPPLY INCLUDES:  
 n° 1 FOOT MOUNTING  
 n° 2 SCREWS

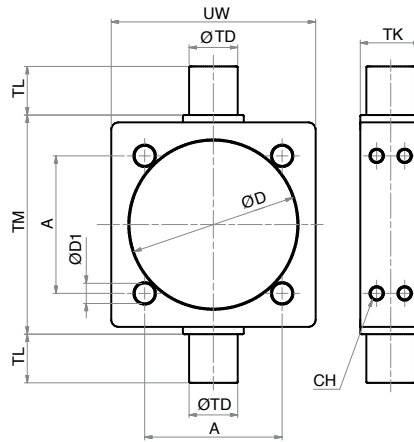
MATERIALE:  
 ACCIAIO ZINCATO  
 MATERIAL:  
 ZINC COATED STEEL

**DIMENSIONI - DIMENSIONS**

| COD. | CICP032 | CICP040 | CICP050 | CICP063 | CICP080 | CICP100 | CICP125 |
|------|---------|---------|---------|---------|---------|---------|---------|
| Ø    |         | 40      | 50      | 63      | 80      | 100     | 125     |
| A    |         | 51,8    | 60,7    | 72,2    | 91,2    | 108,2   | 135,3   |
| CH1  |         | 3       | 3       | 3       | 3       | 4       | 4       |
| CH2  |         | 4       | 5       | 5       | 5       | 6       | 6       |
| Ø TD |         | 16      | 16      | 20      | 20      | 25      | 25      |
| TK   |         | 25      | 30      | 30      | 30      | 40      | 40      |
| TL   |         | 16      | 16      | 20      | 20      | 24,5    | 24,5    |
| TM   |         | 63      | 75      | 90      | 110     | 132     | 160     |
| UW   |         | 75      | 95      | 105     | 130     | 145     | 176     |

**CERNIERA INTERMEDIA PER TIRANTI (MT4)**

CICT

**INTERMEDIATE HINGE FOR TIE RODS (MT4)**


LA FORNITURA COMPRENDE:  
n°1 CERNIERA INTERMEDIA  
THE SUPPLY INCLUDES:  
n°1 INTERMEDIATE HINGE

MATERIALE:  
ACCIAIO ZINCATO  
MATERIAL:  
ZINC COATED STEEL

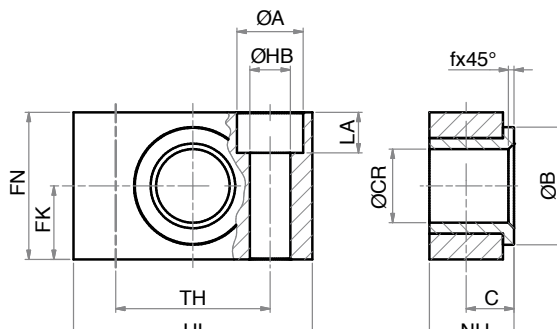
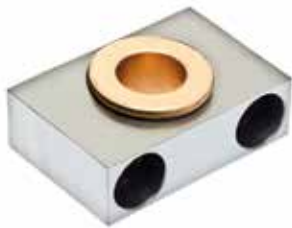
**DIMENSIONI - DIMENSIONS**

| COD. | CICT032 | CICT040 | CICT050 | CICT063 | CICT080 | CICT100 | CICT125 | CICT160 | CICT200 |
|------|---------|---------|---------|---------|---------|---------|---------|---------|---------|
| Ø    | 32      | 40      | 50      | 63      | 80      | 100     | 125     | 160     | 200     |
| A    | 32,5    | 38      | 46,5    | 56,5    | 72      | 89      | 110     | 140     | 175     |
| CH   | 2,5     | 2,5     | 3       | 3       | 4       | 4       | 5       | 6       | 6       |
| Ø D1 | 6,25    | 6,25    | 8,25    | 8,25    | 10,25   | 10,25   | 12,25   | 16,5    | 16,5    |
| Ø D  | 37      | 46      | 56      | 69      | 87      | 107     | 133     | 172,5   | 213     |
| Ø TD | 12      | 16      | 16      | 20      | 20      | 25      | 25      | 32      | 32      |
| TK   | 15      | 20      | 20      | 25      | 25      | 30      | 32      | 40      | 40      |
| TL   | 12      | 16      | 16      | 20      | 20      | 25      | 25      | 32      | 32      |
| TM   | 50      | 63      | 75      | 90      | 110     | 132     | 160     | 200     | 250     |
| UW   | 46      | 59      | 69      | 84      | 102     | 125     | 155     | 190     | 240     |

A richiesta - On request Ø 250-320

**SUPPORTO PER CERNIERA INTERMEDIA (AT4)**

SCI

**SUPPORT FOR INTERMEDIATE HINGE (AT4)**


LA FORNITURA COMPRENDE:  
N° 1 SUPPORTO  
N° 2 VITI  
THE SUPPLY INCLUDES:  
n° 1 SUPPORT  
n° 2 SCREWS

MATERIALE:  
CORPO IN ALLUMINIO  
BOCCOLA IN BRONZO  
MATERIAL:  
BODY IN ALUMINIUM  
BUSH IN BRONZE

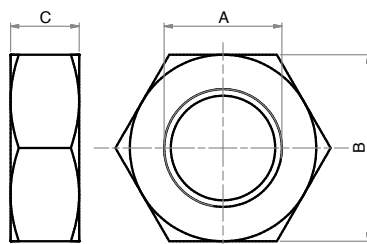
**DIMENSIONI - DIMENSIONS**

| COD. | SCI032 | SCI040.050 | SCI063.080 | SCI100.125 | SCI160.200 |
|------|--------|------------|------------|------------|------------|
| Ø    | 32     | 40-50      | 63-80      | 100-125    | 160-200    |
| C    | 10,5   | 12         | 13         | 16         | 22,5       |
| FK   | 15     | 18         | 20         | 25         | 30         |
| FN   | 30     | 36         | 40         | 50         | 60         |
| f    | 1      | 1,6        | 1,6        | 2          | 2,5        |
| LA   | 7      | 9          | 11         | 13         | 17         |
| NH   | 18     | 21         | 23         | 28,5       | 40         |
| Ø A  | 11     | 15         | 18         | 20         | 26         |
| Ø B  | 22     | 28         | 32         | 39         | 45         |
| Ø CR | 12     | 16         | 20         | 25         | 32         |
| Ø HB | 6,6    | 9          | 11         | 14         | 18         |
| TH   | 32     | 36         | 42         | 50         | 60         |
| UL   | 46     | 55         | 65         | 75         | 92         |

DA

**DADO STELO**

**PISTON ROD NUT**



MATERIALE:  
ACCIAIO ZINCATO  
MATERIAL:  
ZINC COATED STEEL

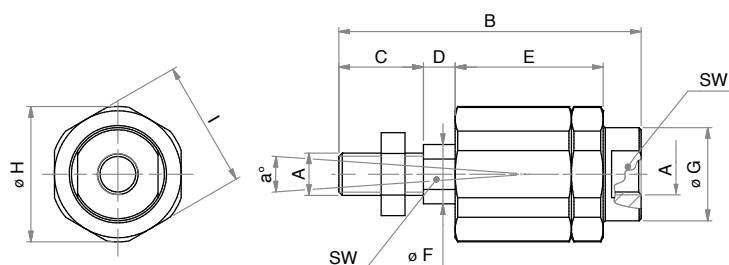
**DIMENSIONI - DIMENSIONS**

| COD. | DA06x1 | DA08x1,25 | DA10x1,25 | DA12x1,25 | DA16x1,5 | DA20x1,5 | DA27x2 | DA36x2 | DA42x2 | DA48x2 |
|------|--------|-----------|-----------|-----------|----------|----------|--------|--------|--------|--------|
| A    | M6     | M8        | M10x1,25  | M12x1,25  | M16x1,5  | M20x1,5  | M27x2  | M36x2  | M42x2  | M48x2  |
| B    | 10     | 13        | 17        | 19        | 24       | 30       | 41     | 55     | 65     | 75     |
| C    | 4      | 5         | 6         | 7         | 8        | 9        | 12     | 14     | 16     | 18     |

**SNODO AUTOALLINEANTE**

SA

**SELF-ALIGNING COUPLING**

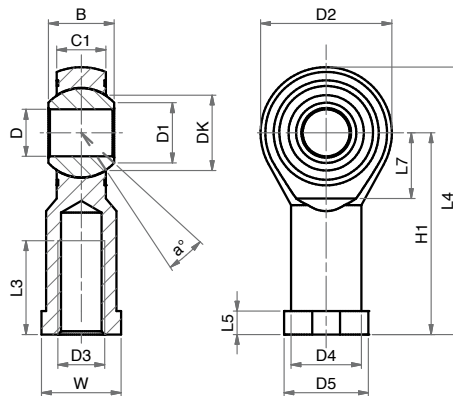


LA FORNITURA  
COMPRENDE:  
n° 1 SNODO  
AUTOALLINEANTE  
n° 1 DADO  
THE SUPPLY INCLUDES:  
n° 1 SELF ALIGNING  
n° 1 NUT

MATERIALE:  
ACCIAIO ZINCATO  
MATERIAL:  
ZINC COATED STEEL

**DIMENSIONI - DIMENSIONS**

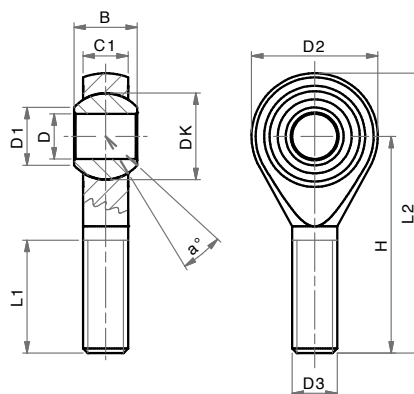
| COD. | SA06x1 | SA08x1,25 | SA10x1,25 | SA12x1,25 | SA16x1,5 | SA20x1,5 | SA27x2 | SA36x2 |
|------|--------|-----------|-----------|-----------|----------|----------|--------|--------|
| A    | M6x1   | M8x1,25   | M10x1,25  | M12x1,25  | M16x1,5  | M20x1,5  | M27x2  | M36x2  |
| α°   | 6      | 8         | 8         | 8         | 6        | 6        | 8      | 8      |
| B    | 35     | 57        | 71,5      | 75,5      | 104      | 119      | 147    | 190    |
| C    | 11     | 21        | 20        | 24        | 32       | 40       | 54     | 72     |
| D    | 2,5    | 5         | 7,5       | 7,5       | 10       | 10       | 10     | 15,5   |
| E    | 17,5   | 26        | 35        | 35        | 53       | 53       | 60     | 77     |
| Ø F  | 6      | 8         | 14        | 14        | 22       | 22       | 32     | 39     |
| Ø G  | 8,5    | 12,5      | 22        | 22        | 32       | 32       | 57     | 57     |
| Ø H  | 14,5   | 19        | 32        | 32        | 45       | 45       | 70     | 75     |
| I    | 13     | 17        | 30        | 30        | 41       | 41       | 65     | 70     |
| SW   | 5      | 7         | 12        | 12        | 20       | 20       | 24     | 32     |
| SW1  | 7      | 11        | 19        | 19        | 27       | 27       | 54     | 54     |

**SNODO SFERICO FILETTO INTERNO**
**SSFI**
**ROD EYE (INTERNAL THREAD)**


MATERIALE:  
CORPO IN ACCIAIO ZINCATO  
SNODO IN ACCIAIO,  
BRONZO E PTFE  
MATERIAL:  
BODY IN ZINC COATED STEEL  
EYE IN STEEL, BRONZE  
AND PTFE

**DIMENSIONI - DIMENSIONS**

| COD.           | SSFI04x0,7 | SSFI06x1 | SSFI08x1,25 | SSFI10x1,25 | SSFI12x1,25 | SSFI16x1,5 | SSFI20x1,5 | SSFI27x2 | SSFI36x2 | SSFI42x2 |
|----------------|------------|----------|-------------|-------------|-------------|------------|------------|----------|----------|----------|
| $\alpha^\circ$ | 13         | 13       | 14          | 13          | 13          | 15         | 14         | 17       | 16       | 16       |
| B              | 8          | 9        | 12          | 14          | 16          | 21         | 25         | 37       | 43       | 49       |
| C1             | 6          | 6,75     | 9           | 10,5        | 12          | 15         | 18         | 25       | 28       | 33       |
| D1             | 7,7        | 8,9      | 10,4        | 12,9        | 15,4        | 19,3       | 24,3       | 34,8     | 37,7     | 45,1     |
| D2             | 18         | 20       | 24          | 28          | 32          | 42         | 50         | 70       | 80       | 91       |
| D3             | M4         | M6       | M8          | M10x1,25    | M12x1,25    | M16x1,5    | M20x1,5    | M27x2    | M36x2    | M42x2    |
| D4             | 9          | 10       | 12,5        | 15          | 17,5        | 22         | 27,5       | 40       | 46       | 53       |
| D5             | 11         | 13       | 16          | 19          | 22          | 27         | 34         | 50       | 58       | 65       |
| DK             | 11,11      | 12,7     | 15,87       | 19,05       | 22,22       | 28,57      | 34,92      | 50,8     | 57,15    | 66,6     |
| D              | 5          | 6        | 8           | 10          | 12          | 16         | 20         | 30       | 35       | 40       |
| H1             | 27         | 30       | 36          | 43          | 50          | 64         | 77         | 110      | 125      | 142      |
| L3             | 10         | 12       | 16          | 20          | 22          | 28         | 33         | 51       | 56       | 60       |
| L4             | 36         | 40       | 48          | 57          | 66          | 85         | 102        | 145      | 165      | 187      |
| L5             | 4          | 5        | 5           | 6,5         | 6,5         | 8          | 10         | 15       | 17       | 19       |
| L7             | 10         | 11       | 13          | 15          | 17          | 23         | 27         | 36       | 41       | 45       |
| W              | 9          | 11       | 14          | 17          | 19          | 22         | 30         | 41       | 50       | 55       |

**SNODO SFERICO FILETTO ESTERNO**
**SSFE**
**ROD EYE (EXTERNAL THREAD)**


MATERIALE:  
CORPO IN ACCIAIO ZINCATO  
SNODO IN ACCIAIO,  
BRONZO E PTFE  
MATERIAL:  
BODY IN ZINC COATED STEEL  
EYE IN STEEL, BRONZE  
AND PTFE

**DIMENSIONI - DIMENSIONS**

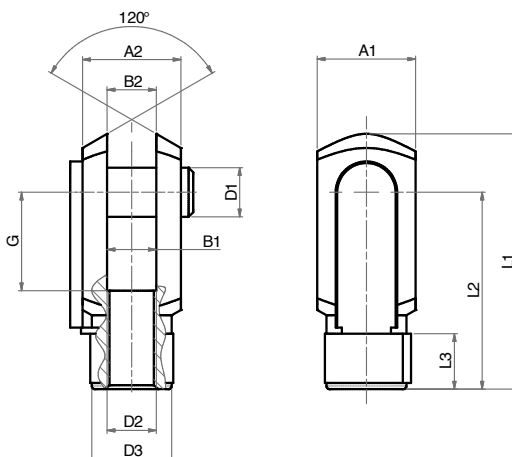
| COD.           | SSFE06x1 | SSFE08x1,25 | SSFE10x1,5 | SSFE12x1,75 | SSFE16x2 | SSFE20x2,5 |
|----------------|----------|-------------|------------|-------------|----------|------------|
| $\alpha^\circ$ | 13       | 14          | 13         | 13          | 15       | 14         |
| B              | 9        | 12          | 14         | 16          | 21       | 25         |
| C1             | 6,75     | 9           | 10,5       | 12          | 15       | 19         |
| D1             | 8,9      | 10,4        | 12,9       | 15,4        | 19,3     | 24,3       |
| D2             | 20       | 24          | 28         | 32          | 42       | 50         |
| D3             | M6       | M8          | M10        | M12         | M16      | M20        |
| DK             | 12,7     | 15,87       | 19,05      | 22,22       | 28,57    | 34,52      |
| D              | 6        | 8           | 10         | 12          | 16       | 20         |
| H              | 36       | 42          | 48         | 54          | 66       | 78         |
| L1             | 21       | 25          | 28         | 32          | 37       | 45         |
| L2             | 46       | 54          | 62         | 70          | 87       | 103        |



FC

**FORCELLA CON CLIPS**

**CLEVIS WITH LOCKABLE PIN**



LA FORNITURA COMPRENDE:  
 n° 1 FORCELLA  
 n° 1 CLIPS  
 THE SUPPLY INCLUDES:  
 n° 1 FORK  
 n° 1 LOCKABLE PIN

MATERIALE:  
 ACCIAIO ZINCATO  
 MATERIAL:  
 ZINC COATED STEEL

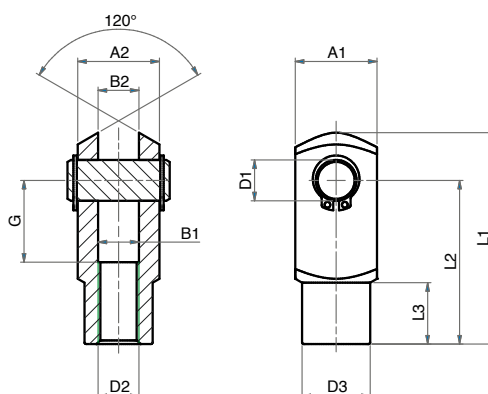
**DIMENSIONI - DIMENSIONS**

| COD. | FC04x0,7 | FC06x1 | FC08x1,25 | FC10x1,25 | FC12x1,25 | FC16x1,5 | FC20x1,5 |
|------|----------|--------|-----------|-----------|-----------|----------|----------|
| A1   | 8        | 12     | 16        | 20        | 24        | 32       | 40       |
| A2   | 8        | 12     | 16        | 20        | 24        | 32       | 40       |
| B1   | 4        | 6      | 8         | 10        | 12        | 16       | 20       |
| B2   | 4        | 6      | 8         | 10        | 12        | 16       | 20       |
| G    | 8        | 12     | 16        | 20        | 24        | 32       | 40       |
| L1   | 21       | 31     | 42        | 52        | 62        | 83       | 105      |
| L2   | 16       | 24     | 32        | 40        | 48        | 64       | 80       |
| L3   | 6        | 9      | 12        | 15        | 18        | 24       | 30       |
| ø D1 | 4        | 6      | 8         | 10        | 12        | 16       | 20       |
| ø D2 | M4x0,7   | M6x1   | M8x1,25   | M10x1,25  | M12x1,25  | M16x1,5  | M20x1,5  |
| ø D3 | 8        | 10     | 14        | 18        | 20        | 26       | 34       |

**FORCELLA CON PERNO**

FP

**CLEVIS WITH PIN**



LA FORNITURA COMPRENDE:  
 n° 1 FORCELLA  
 n° 1 PERNO  
 n° 2 SEGER  
 THE SUPPLY INCLUDES:  
 n° 1 FORK  
 n° 1 PIN  
 n° RETAINING RING

MATERIALE:  
 ACCIAIO ZINCATO  
 MATERIAL:  
 ZINC COATED STEEL

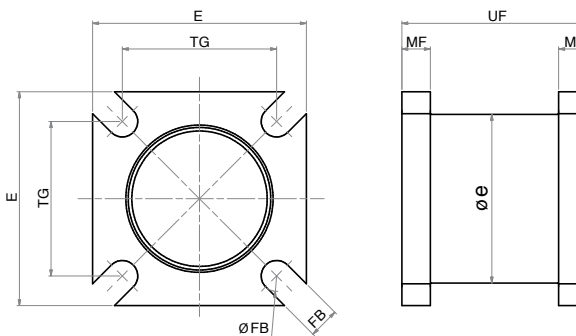
**DIMENSIONI - DIMENSIONS**

| COD. | FP06x1 | FP08x1,25 | FP10x1,25 | FP12x1,25 | FP16x1,5 | FP20x1,5 | FP27x2 | FP36x2 | FP42x2 |
|------|--------|-----------|-----------|-----------|----------|----------|--------|--------|--------|
| A1   | 12     | 16        | 20        | 24        | 32       | 40       | 55     | 70     | 85     |
| A2   | 12     | 16        | 20        | 24        | 32       | 40       | 55     | 70     | 85     |
| B1   | 6      | 8         | 10        | 12        | 16       | 20       | 30     | 35     | 40     |
| B2   | 6      | 8         | 10        | 12        | 16       | 20       | 30     | 35     | 40     |
| G    | 12     | 16        | 20        | 24        | 32       | 40       | 54     | 72     | 84     |
| L1   | 31     | 42        | 52        | 62        | 83       | 105      | 148    | 188    | 232    |
| L2   | 24     | 32        | 40        | 48        | 64       | 80       | 110    | 144    | 168    |
| L3   | 9      | 12        | 15        | 18        | 24       | 30       | 38     | 40     | 63,5   |
| ø D1 | 6      | 8         | 10        | 12        | 16       | 20       | 30     | 35     | 42     |
| ø D2 | M6x1   | M8x1,25   | M10x1,25  | M12x1,25  | M16x1,5  | M20x1,5  | M27x2  | M36x2  | M42x2  |
| ø D3 | 10     | 14        | 18        | 20        | 26       | 34       | 48     | 60     | 70     |

## FLANGIA CILINDRI TANDEM E PIÙ POSIZIONI

FLTI

### TANDEM AND MULTI-POSITION FLANGE



MATERIALE: ALLUMINIO  
MATERIAL: ALUMINIUM

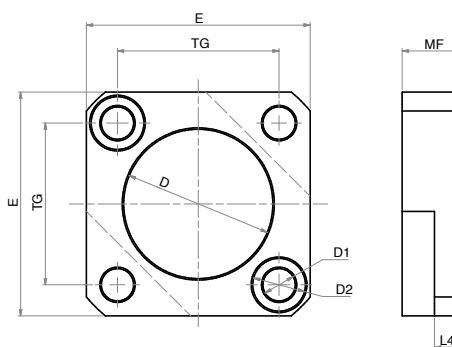
#### DIMENSIONI - DIMENSIONS

| COD. | FLTI032 | FLTI040 | FLTI050 | FLTI063 | FLTI080 | FLTI100 | FLTI125 | FLTI160 | FLTI200 | FLTI250 | FLTI320 |
|------|---------|---------|---------|---------|---------|---------|---------|---------|---------|---------|---------|
| Ø    | 32      | 40      | 50      | 63      | 80      | 100     | 125     | 160     | 200     | 250     | 320     |
| E    | 45      | 50      | 65      | 75      | 90      | 105     | 130     | 175     | 215     | 260     | 335     |
| Ø e  | 35,5    | 42,5    | 51      | 65      | 84      | 102     | 127     | 160     | 205     | 240     | 320     |
| FB   | 6,5     | 6,5     | 8,5     | 8,5     | 10,5    | 10,5    | -       | -       | -       | -       | -       |
| Ø FB | 6,5     | 6,5     | 8,5     | 8,5     | 10,5    | 10,5    | 12,5    | 17      | 16      | 20      | 24      |
| MF   | 6       | 6       | 9       | 10      | 10      | 10,5    | 10      | 18      | 15      | 20      | 20      |
| TG   | 32,5    | 38      | 46      | 56,5    | 72      | 89      | 110     | 140     | 175     | 220     | 270     |
| UF   | 39      | 45      | 52      | 53      | 65      | 77      | 93      | 112     | 132     | 152     | 182     |

## FLANGIA CILINDRI CONTRAPPOSTI

FLCI

### REAR OPPOSED CYLINDER FLANGE



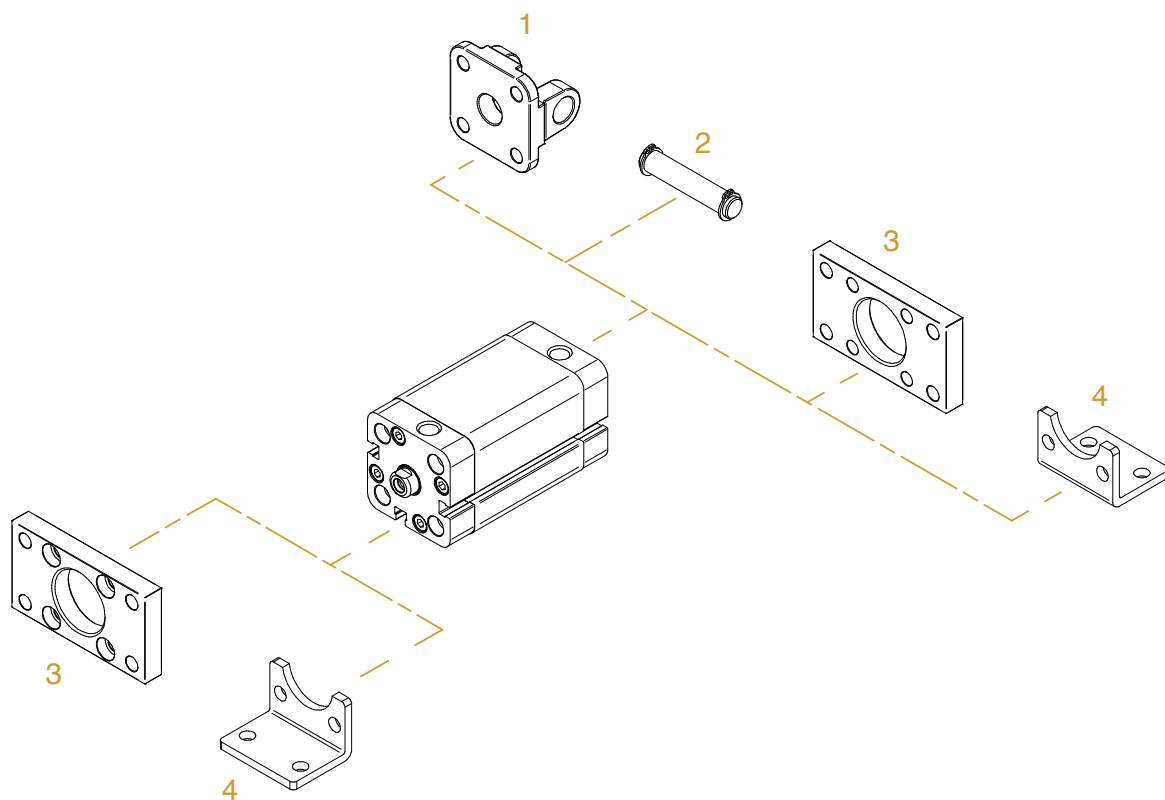
MATERIALE: ALLUMINIO  
MATERIAL: ALUMINIUM

#### DIMENSIONI - DIMENSIONS

| COD. | FLCI032 | FLCI040 | FLCI050 | FLCI063 | FLCI080 | FLCI100 | FLCI125 | FLCI160 | FLCI200 | FLCI250 | FLCI320 |
|------|---------|---------|---------|---------|---------|---------|---------|---------|---------|---------|---------|
| Ø    | 32      | 40      | 50      | 63      | 80      | 100     | 125     | 160     | 200     | 250     | 320     |
| D    | 30      | 35      | 40      | 45      | 45      | 55      | 60      | 65      | 75      | 90      | 110     |
| D1   | 6,5     | 6,5     | 8,5     | 8,5     | 10,5    | 10,5    | 12,5    | 16,5    | 16,5    | 20,5    | 24,5    |
| D2   | 10,6    | 10,6    | 13,5    | 13,5    | 16,5    | 16,5    | 18,5    | 24,5    | 24,5    | 30      | 36      |
| E    | 45      | 50      | 65      | 75      | 90      | 105     | 130     | 180     | 215     | 260     | 340     |
| L4   | 5,5     | 5,5     | 7,5     | 7,5     | 9       | 10,5    | 15      | 12,5    | 12,5    | 15      | 20      |
| MF   | 12      | 12      | 16      | 16      | 20      | 20      | 30      | 25      | 25      | 30      | 40      |
| TG   | 32,5    | 38      | 46,5    | 56,5    | 72      | 89      | 110     | 140     | 175     | 220     | 270     |

## ACCESSORI DI FISSAGGIO UNITOP

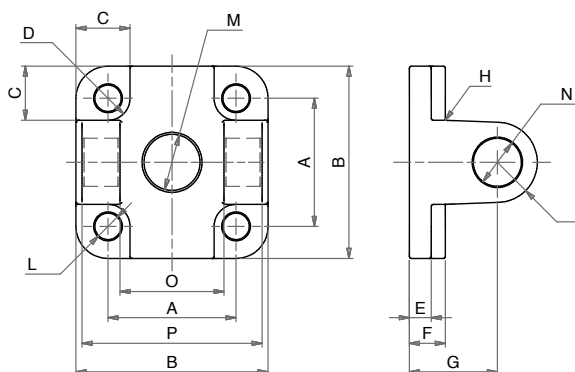
### UNITOP MOUNTING PARTS



| POS. | CODE          | DESCRIZIONE - DESCRIPTION                            |
|------|---------------|--|
| 1    | <b>CFU---</b> | cerniera femmina unitop - <i>unitop female hinge</i> |
| 2    | <b>PCF---</b> | perno per cerniera - <i>pin for hinge</i>            |
| 3    | <b>FU---</b>  | flangia unitop - <i>unitop flange</i>                |
| 4    | <b>PBU---</b> | pedino basso unitop - <i>unitop foot mounting</i>    |

## CERNIERA FEMMINA UNITOP

CFU



LA FORNITURA COMPRENDE:  
n° 1 CERNIERA FEMMINA  
n° 4 VITI  
THE SUPPLY INCLUDES:  
n° 1 FEMALE HINGE  
n° 4 SCREWS

MATERIALE: ALLUMINIO  
MATERIAL: ALUMINIUM

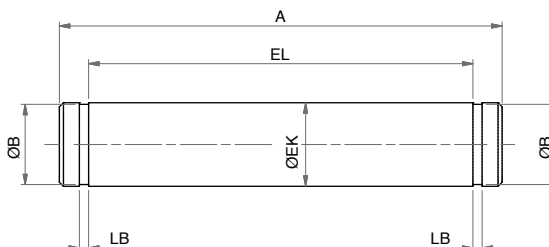
### DIMENSIONI - DIMENSIONS

| COD. | CFU032 | CFU040 | CFU050 | CFU063 | CFU080 | CFU100 |
|------|--------|--------|--------|--------|--------|--------|
| Ø    | 32     | 40     | 50     | 63     | 80     | 100    |
| A    | 32     | 42     | 50     | 62     | 82     | 103    |
| B    | 48     | 58     | 66     | 83     | 102    | 123    |
| C    | 13,5   | 13,5   | 15,5   | 18     | 19     | 19     |
| D    | 5,5    | 5,5    | 7,5    | 7,5    | 9      | 9      |
| E    | 5,5    | 5,5    | 6,5    | 6,5    | 10     | 10     |
| F    | 9      | 9      | 11     | 11     | 13     | 15     |
| G    | 22     | 25     | 27     | 32     | 36     | 41     |
| H    | 2,5    | 2,5    | 2,5    | 4      | 4      | 4      |
| I    | 10     | 12,5   | 12,5   | 15     | 15     | 20     |
| L    | 6,6    | 6,6    | 9      | 9      | 11     | 11     |
| M    | 14     | 14     | 18     | 18     | 23     | 28     |
| N    | 12     | 14     | 14     | 18     | 18     | 23     |
| P    | 45     | 52     | 60     | 70     | 90     | 110    |
| Q    | 10     | 12     | 12     | 16     | 16     | 20     |

## PERNO PER CERNIERA (AA4)

PCF

### PIN FOR HINGE (AA4)

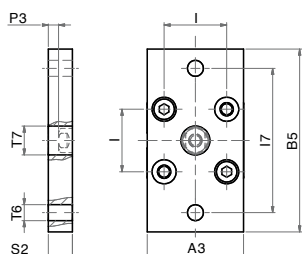


LA FORNITURA COMPRENDE:  
n° 1 PERNO  
n° 2 SEEGER  
THE SUPPLY INCLUDES:  
n° 1 PIN  
n° 2 RETAINING RING

MATERIALE:  
ACCIAIO ZINCATO  
MATERIAL:  
ZINC COATED STEEL

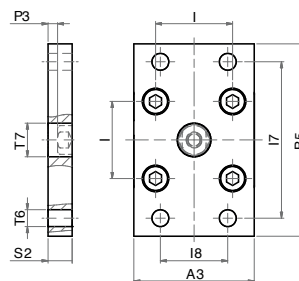
### DIMENSIONI - DIMENSIONS

| COD. | PCF032 | PCF040 | PCF050 | PCF063 | PCF080 | PCF100 | PCF125 | PCF160.200 |
|------|--------|--------|--------|--------|--------|--------|--------|------------|
| Ø    | 32     | 40     | 50     | 63     | 80     | 100    | 125    | 160-200    |
| A    | 53     | 60     | 68     | 78     | 98     | 118    | 139    | 180        |
| EL   | 46     | 53     | 61     | 71     | 91     | 111    | 132    | 172        |
| LB   | 1,1    | 1,1    | 1,1    | 1,1    | 1,1    | 1,3    | 1,3    | 1,6        |
| Ø B  | 9,6    | 11,5   | 11,5   | 15,2   | 15,2   | 19     | 23,9   | 28,6       |
| Ø EK | 10     | 12     | 12     | 16     | 16     | 20     | 25     | 30         |

**FLANGIA UNITOP**
**UNITOP MOUNTING**


LA FORNITURA  
 COMPRENDE:  
 n° 1 FLANGIA  
 n° 2 VITI  
 THE SUPPLY  
 INCLUDES:  
 n° 1 FLANGE  
 n° 2 SCREWS

Ø016 - Ø020 - Ø025



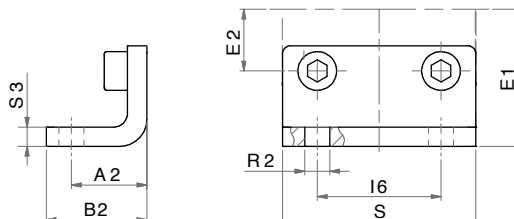
LA FORNITURA  
 COMPRENDE: n° 1  
 FLANGIA  
 n° 4 VITI  
 THE SUPPLY INCLUDES:  
 n° 1 FLANGE  
 n° 4 SCREWS

MATERIALE:  
 ACCIAIO ZINCATO  
 MATERIAL:  
 ZINC COATED STEEL

 Ø032 - Ø040 - Ø050 - Ø063 -  
 Ø080 - Ø100

**DIMENSIONI - DIMENSIONS**

| COD. | FI016 | FI020 | FI025 | FU032 | FU040 | FU050 | FU063 | FU080 | FU100 |
|------|-------|-------|-------|-------|-------|-------|-------|-------|-------|
| Ø    | 016   | 020   | 025   | 032   | 040   | 050   | 063   | 080   | 100   |
| A3   | 29    | 36    | 40    | 50    | 60    | 68    | 87    | 107   | 128   |
| B5   | 55    | 70    | 76    | 80    | 102   | 110   | 130   | 160   | 190   |
| I7   | 43    | 55    | 60    | 65    | 82    | 90    | 110   | 135   | 163   |
| I8   | -     | -     | -     | 32    | 36    | 45    | 50    | 63    | 75    |
| I    | 18    | 22    | 26    | 32    | 42    | 50    | 62    | 82    | 103   |
| Ø T6 | 5,5   | 6,5   | 6,5   | 7     | 9     | 9     | 9     | 12    | 14    |
| Ø T7 | 10    | 12    | 12    | 14    | 14    | 18    | 18    | 23    | 28    |
| P3   | 5,5   | 5,5   | 4,5   | 4     | 3,5   | 4,5   | 7,5   | 7     | 5     |
| S2   | 10    | 10    | 10    | 10    | 10    | 12    | 15    | 15    | 15    |

**PIEDINO BASSO UNITOP**
**UNITOP FOOT MOUNTING**


LA FORNITURA  
 COMPRENDE:  
 n° 1 PIEDINI  
 n° 2 VITI  
 THE SUPPLY INCLUDES:  
 n° 1 FOOT MOUNTING  
 n° 2 SCREWS

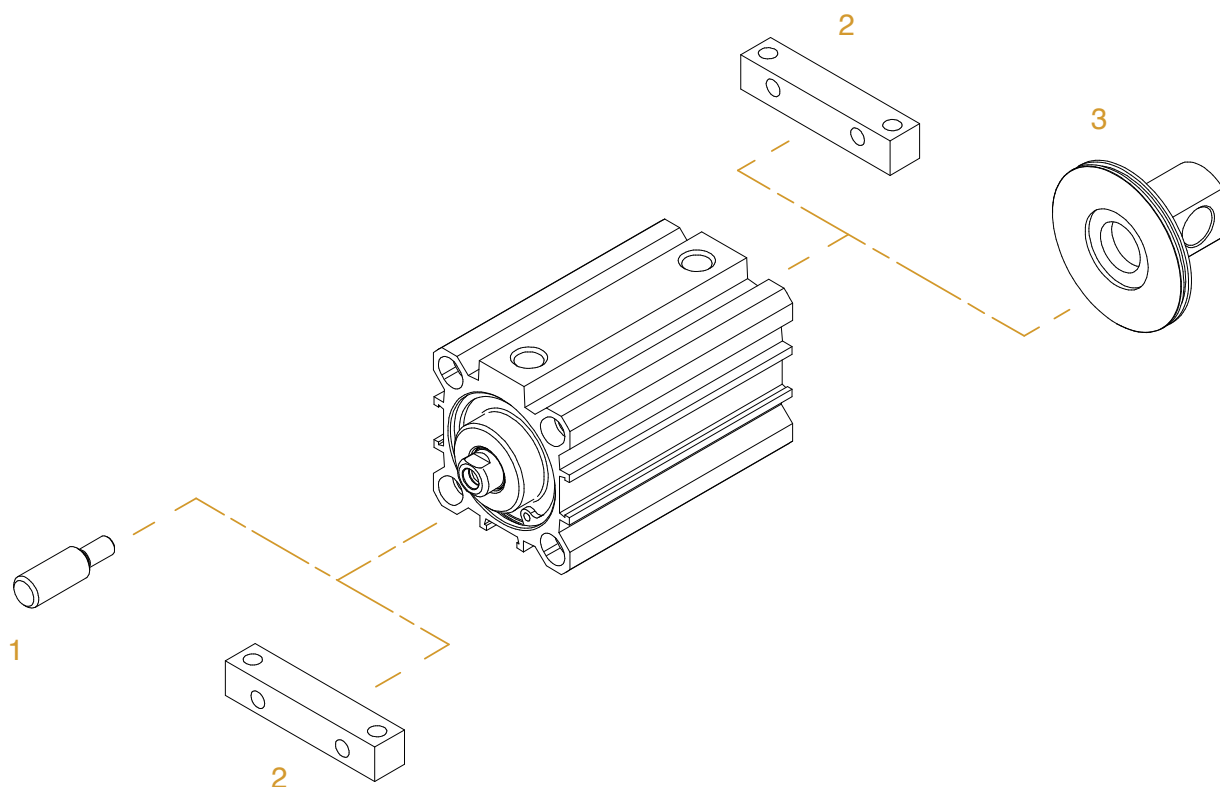
MATERIALE:  
 ACCIAIO ZINCATO  
 MATERIAL:  
 ZINC COATED STEEL

**DIMENSIONI - DIMENSIONS**

| COD. | PBI016 | PBI020 | PBI025 | PBU032 | PBU040 | PBU050 | PBU063 | PBU080 | PBU100 |
|------|--------|--------|--------|--------|--------|--------|--------|--------|--------|
| Ø    | 016    | 020    | 025    | 032    | 040    | 050    | 063    | 080    | 100    |
| A2   | 13     | 16     | 16     | 18     | 20     | 24     | 27     | 30     | 33     |
| B2   | 17,5   | 22     | 22     | 26     | 28     | 32     | 39     | 42     | 45     |
| E1   | 22     | 27     | 30     | 32     | 42,5   | 47     | 59,5   | 62,5   | 78     |
| E2   | 9      | 11     | 13     | 16     | 21     | 25     | 31     | 41     | 51,5   |
| I6   | 18     | 22     | 26     | 32     | 42     | 50     | 62     | 82     | 103    |
| Ø R2 | 5,5    | 6,5    | 6,5    | 6,5    | 9      | 9      | 11     | 11     | 13,5   |
| S    | 30     | 36     | 40     | 50     | 60     | 68     | 84     | 102    | 123    |
| S3   | 3      | 4      | 4      | 5      | 5      | 6      | 6      | 8      | 8      |

## ACCESSORI DI FISSAGGIO CILINDRO CORSA BREVE (SERIE F)

### SHORT STROKE CYLINDER MOUNTING PARTS (SERIE F)



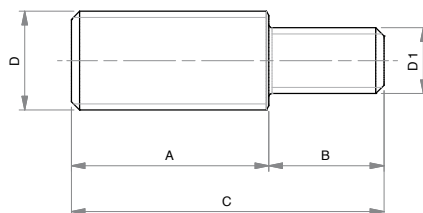
SERIE F

| POS. | CODE   | DESCRIZIONE-DESCRIPTION       |
|------|--------|-------------------------------|
| 1    | NP---  | nipplo - nipples              |
| 2    | FPD--- | pedino - foot mounting        |
| 3    | FCP--- | cerniera maschio - male hinge |

## NIPPLO

NP

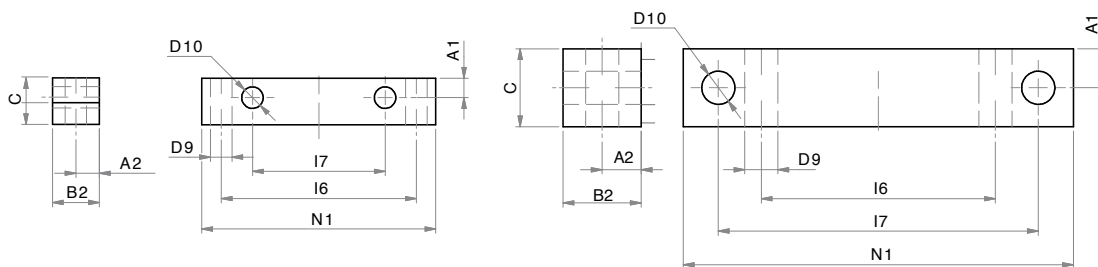
### NIPPLES



MATERIALE:  
ACCIAIO INOX  
MATERIAL:  
STAINLESS STEEL

### DIMENSIONI - DIMENSIONS

| COD. | NP6.3 | NP6.4 | NP8.5   | NP10.6   | NP12.8   | NP16.8  | NP16.10 | NP20.12 |
|------|-------|-------|---------|----------|----------|---------|---------|---------|
| A    | 16    | 15    | 20      | 22       | 24       | 32      | 32      | 40      |
| B    | 6,5   | 8     | 10      | 12       | 14       | 14      | 15      | 20      |
| C    | 22,5  | 23    | 30      | 34       | 38       | 46      | 47      | 60      |
| D    | M6x1  | M6x1  | M8x1,25 | M10x1,25 | M12x1,25 | M16x1,5 | M16x1,5 | M20x1,5 |
| D1   | M3    | M4    | M5      | M6       | M8       | M8      | M10     | M12     |

**PIEDINO**
**FOOT MOUNTING**


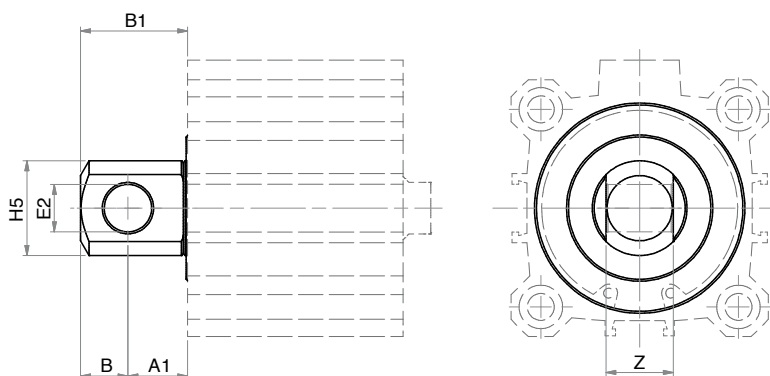
MATERIALE: ALLUMINIO ANODIZZATO  
MATERIAL: ANODIZED ALUMINIUM

Ø016 - Ø020 - Ø025 - Ø032 - Ø040 - Ø050 - Ø063

Ø080 - Ø100

**DIMENSIONI - DIMENSIONS**

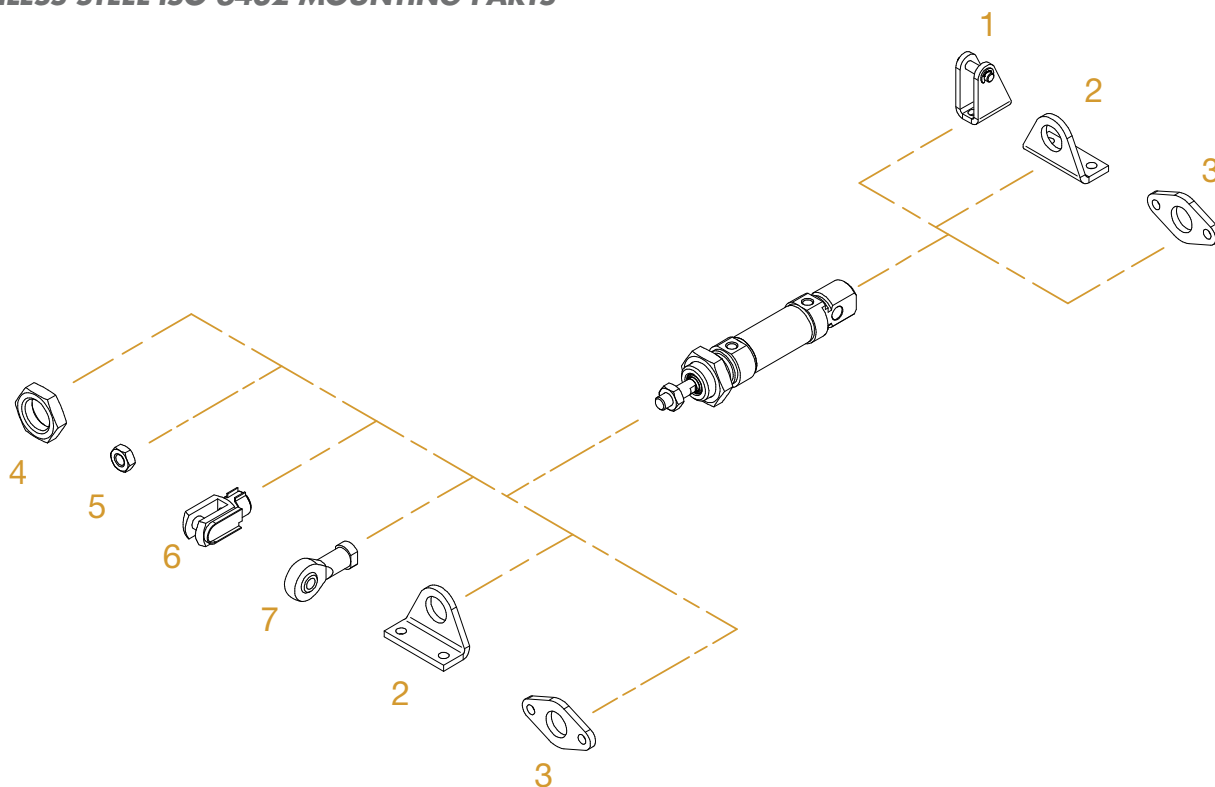
| COD.  | FPD016 | FPD020 | FPD025 | FPD032 | FPD040 | FPD050 | FPD063 | FPD080 | FPD100 |
|-------|--------|--------|--------|--------|--------|--------|--------|--------|--------|
| Ø     | 016    | 020    | 025    | 032    | 040    | 050    | 063    | 080    | 100    |
| A1    | 3      | 5      | 6      | 5      | 5,5    | 7,5    | 6      | 9      | 9,5    |
| A2    | 5      | 5      | 6      | 6      | 6      | 7,5    | 7,5    | 10     | 10     |
| B2    | 10     | 10     | 12     | 12     | 12     | 15     | 15     | 20     | 20     |
| C     | 10     | 10     | 12     | 12     | 12     | 15     | 15     | 20     | 20     |
| E1    | 17     | 18     | 20     | 24     | 27,5   | 32,5   | 40     | 50     | 62     |
| F2    | 5      | 5      | 7,5    | 5      | 5      | 5      | 7,5    | 20     | 22     |
| I6    | 30     | 40     | 45     | 50     | 60     | 70     | 85     | 60     | 80     |
| I7    | 20     | 25,5   | 28     | 34     | 42     | 50     | 62     | 82     | 103    |
| N1    | 40     | 50     | 60     | 60     | 70     | 80     | 100    | 100    | 124    |
| Ø D10 | 3,5    | 5,5    | 5,5    | 5,5    | 5,5    | 5,5    | 8,5    | 8,5    | 10,5   |
| Ø D9  | 3,5    | 5,5    | 5,5    | 5,5    | 5,5    | 6,5    | 8,5    | 8,5    | 10,5   |

**CERNIERA MASCHIO**
**MALE HINGE**


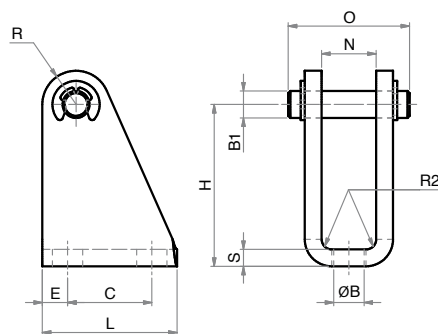
MATERIALE: ALLUMINIO ANODIZZATO  
MATERIAL: ANODIZED ALUMINIUM

**DIMENSIONI - DIMENSIONS**

| COD. | FCP016 | FCP020 | FCP025 | FCP032 | FCP040 | FCP050 | FCP063 | FCP080 | FCP100 |
|------|--------|--------|--------|--------|--------|--------|--------|--------|--------|
| Ø    | 016    | 020    | 025    | 032    | 040    | 050    | 063    | 080    | 100    |
| A1   | 8      | 10     | 10     | 13     | 15     | 15     | 19     | 19     | 23     |
| B1   | 14     | 18     | 18     | 23     | 27     | 27     | 35     | 35     | 43     |
| B    | 6      | 8      | 8      | 10     | 12     | 12     | 16     | 16     | 20     |
| Ø E2 | 6      | 8      | 8      | 10     | 12     | 12     | 16     | 16     | 20     |
| Ø H5 | 12     | 16     | 16     | 20     | 24     | 24     | 32     | 32     | 40     |
| Z    | 7      | 9      | 9      | 14     | 16     | 17     | 22     | 22     | 26     |

**ACCESSORI DI FISSAGGIO ISO 6432 INOX**
**STAINLESS STEEL ISO 6432 MOUNTING PARTS**


| POS. | CODE               | DESCRIZIONE-DESCRIPTION                       |
|------|--------------------|---|
| 1    | <b>MCFI---X</b>    | cerniera con perno - female hinge with pin    |
| 2    | <b>MPBI---X</b>    | piedino - foot mounting                       |
| 3    | <b>MFI---X</b>     | flangia - flange                              |
| 4    | <b>DAT---X</b>     | dado testata - nose nut                       |
| 5    | <b>DA--x---X</b>   | dado stelo - rod nut                          |
| 6    | <b>FP--x---X</b>   | forcella con clips - clevis with lockable pin |
| 7    | <b>SSFI--x---X</b> | snodo sferico - road eye                      |

**CERNIERA CON PERNO (MP3)**
**MCFI X**
**FEMALE HINGE WITH PIN (MP3)**


MATERIALE:  
ACCIAIO INOX AISI 304  
MATERIAL:  
AISI 304 STAINLESS STEEL

**DIMENSIONI - DIMENSIONS**

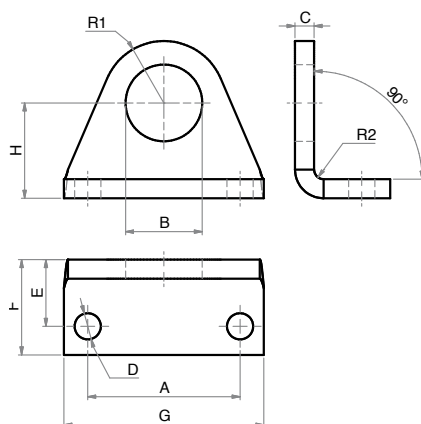
| COD. | MCFI008.010X | MCFI012.016X | MCFI020.025X |
|------|--------------|--------------|--------------|
| Ø mm | 8 - 10       | 12 - 16      | 20 - 25      |
| B    | 4,5          | 5,5          | 6,6          |
| B1   | 4            | 6            | 8            |
| C    | 12,5         | 15           | 20           |
| E    | 3,75         | 5            | 6            |
| H    | 24           | 27           | 30           |
| L    | 20           | 25           | 32           |
| N    | 8,1          | 12,1         | 16,1         |
| O    | 18           | 24           | 31           |
| R    | 5            | 7            | 10           |
| R2   | 1,5          | 1,5          | 2            |
| S    | 2,5          | 3            | 4            |



## PIEDINO INOX (MS3)

MPBI X

### STAINLESS STEEL FOOT MOUNTING (MS3)



MATERIALE:  
ACCIAIO INOX AISI 304  
MATERIAL:  
AISI 304 STAINLESS STEEL

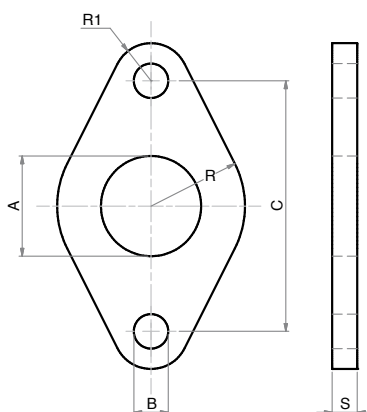
#### DIMENSIONI - DIMENSIONS

| COD. | MPBI008.010X | MPBI012.016X | MPBI020.025X |
|------|--------------|--------------|--------------|
| Ø    | 8 - 10       | 12 - 16      | 20 - 25      |
| A    | 25           | 32           | 40           |
| B    | 12           | 16,1         | 22,1         |
| C    | 3            | 4            | 5            |
| D    | 4,5          | 5,5          | 6,6          |
| E    | 11           | 14           | 17           |
| F    | 16           | 20           | 25           |
| G    | 35           | 42           | 54           |
| H    | 16           | 20           | 25           |
| R1   | 10           | 13           | 20           |
| R2   | 1,5          | 2            | 2,5          |

## FLANGIA INOX (MF8)

MFI X

### STAINLESS STEEL FLANGE (MF8)



MATERIALE:  
ACCIAIO INOX AISI 304  
MATERIAL:  
AISI 304 STAINLESS STEEL

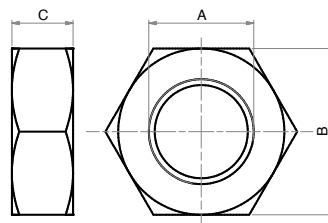
#### DIMENSIONI - DIMENSIONS

| COD. | MFI008.010X | MFI012.016X | MFI020.025X |
|------|-------------|-------------|-------------|
| Ø    | 8 - 10      | 12 - 16     | 20 - 25     |
| A    | 12          | 16          | 22          |
| B    | 4,5         | 5,5         | 6,5         |
| C    | 30          | 40          | 50          |
| R    | 11          | 15          | 20          |
| R1   | 5           | 6           | 8           |
| S    | 3           | 4           | 5           |

## DADO STELO

DA X

### PISTON ROD NUT



MATERIALE:  
ACCIAIO INOX AISI 304  
MATERIAL:  
AISI 304 STAINLESS STEEL

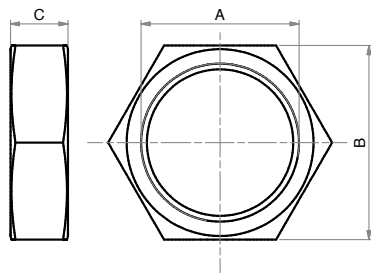
#### DIMENSIONI - DIMENSIONS

| COD. | DA06x1X | DA08x1,25X | DA10x1,25X |
|------|---------|------------|------------|
| A    | M6      | M8         | M10x1,25   |
| B    | 10      | 13         | 17         |
| C    | 4       | 5          | 6          |

## DADO TESTATA (MR3)

DAT X

### NOSE NUT (MR3)



MATERIALE:  
ACCIAIO INOX AISI 303  
MATERIAL:  
AISI 303 STAINLESS STEEL

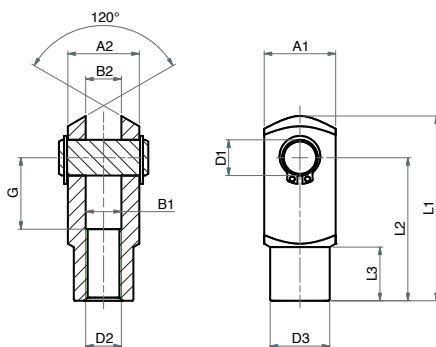
#### DIMENSIONI - DIMENSIONS

| COD. | DAT008.010X | DAT012.016X | DAT020.025X |
|------|-------------|-------------|-------------|
| A    | M12x1,25    | M16x1,5     | M22x1,5     |
| B    | 19          | 22          | 27          |
| C    | 7           | 5           | 8           |

## FORCELLA CON PERNO INOX

FP X

### STAINLESS STEEL CLEVIS WITH PIN



MATERIALE:  
ACCIAIO INOX AISI 303  
MATERIAL:  
AISI 303 STAINLESS STEEL

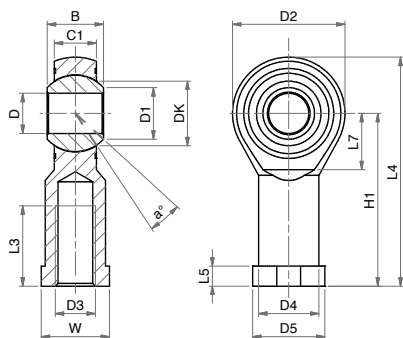
#### DIMENSIONI - DIMENSIONS

| COD. | FP06x1X | FP08x1,25X | FP10x1,25X |
|------|---------|------------|------------|
| A1   | 12      | 16         | 20         |
| A2   | 12      | 16         | 20         |
| B1   | 6       | 8          | 10         |
| B2   | 6       | 8          | 10         |
| G    | 12      | 16         | 20         |
| L1   | 31      | 42         | 52         |
| L2   | 24      | 32         | 40         |
| L3   | 9       | 12         | 15         |
| ø D2 | M6x1    | M8x1,25    | M10x1,25   |
| ø D3 | 10      | 14         | 18         |
| ø D1 | 6       | 8          | 10         |

## SNODO SFERICO INOX

SSFI X

### STAINLESS STEEL ROD EYE



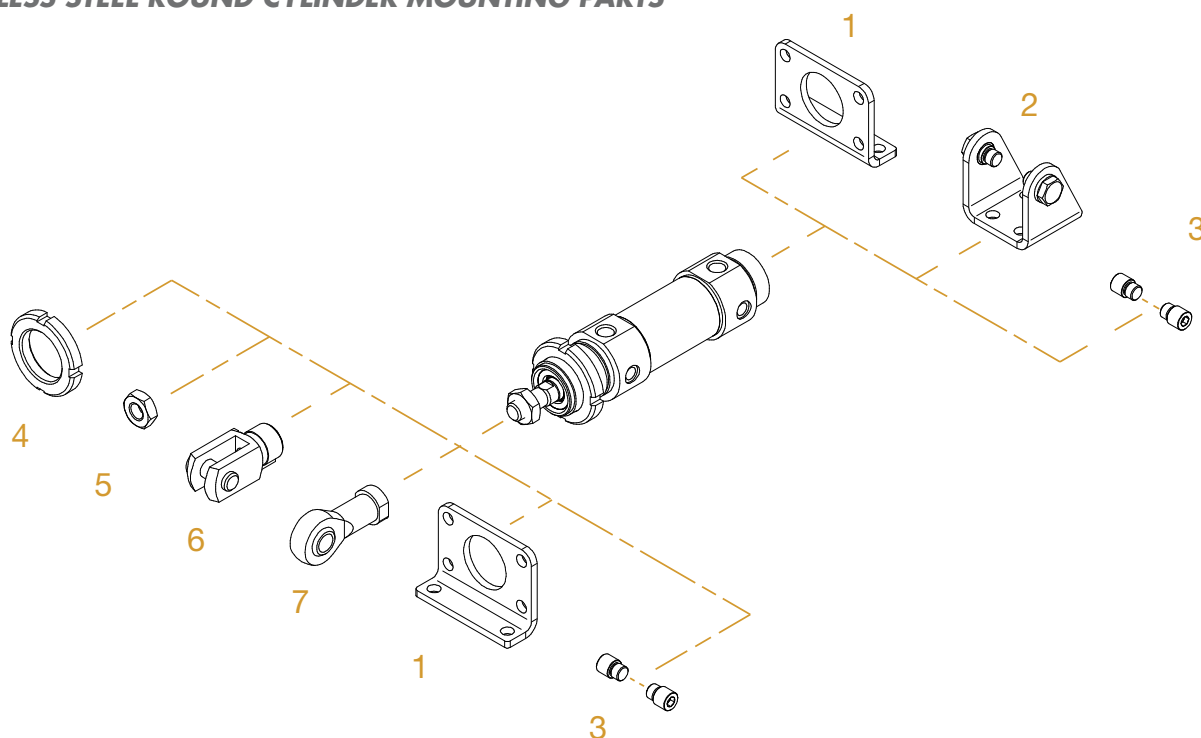
MATERIALE:  
CORPO IN ACCIAIO INOX AISI 304  
SNODO IN ACCIAIO INOX E PTFE  
MATERIAL:  
BODY IN AISI 304 STAINLESS STEEL  
EYE IN STAINLESS STEEL AND PTFE

#### DIMENSIONI - DIMENSIONS

| COD. | SSFI04x0,7X | SSFI06x1X | SSFI08x1,25X | SSFI10x1,25X |
|------|-------------|-----------|--------------|--------------|
| α°   | 13          | 13        | 14           | 13           |
| B    | 8           | 9         | 12           | 14           |
| C1   | 6           | 6,75      | 9            | 10,5         |
| D1   | 7,7         | 8,9       | 10,4         | 12,9         |
| D2   | 18          | 20        | 24           | 28           |
| D3   | M4          | M6        | M8           | M10x1,25     |
| D4   | 9           | 10        | 12,5         | 15           |
| D5   | 11          | 13        | 16           | 19           |
| DK   | 11,11       | 12,7      | 15,87        | 19,05        |
| D    | 5           | 6         | 8            | 10           |
| H1   | 27          | 30        | 36           | 43           |
| L3   | 10          | 12        | 16           | 20           |
| L4   | 36          | 40        | 48           | 57           |
| L5   | 4           | 5         | 5            | 6,5          |
| L7   | 10          | 11        | 13           | 15           |
| W    | 9           | 11        | 14           | 17           |

## ACCESSORI DI FISSAGGIO CILINDRO TONDO INOX

### STAINLESS STEEL ROUND CYLINDER MOUNTING PARTS



| POS. | CODE               | DESCRIZIONE - DESCRIPTION                            |
|------|--------------------|--|
| 1    | <b>MPBI---X</b>    | pedino flangia inox - ss foot flange                 |
| 2    | <b>MCFI---X</b>    | cerniera con viti inox - ss hinge with screws        |
| 3    | <b>MPE---X</b>     | perni inox - ss pivots                               |
| 4    | <b>GHI---X</b>     | ghiera inox- ss slotted nut                          |
| 5    | <b>DA--x---X</b>   | dado stelo inox- ss rod nut                          |
| 6    | <b>FP--x---X</b>   | forcella con clips inox- ss clevis with lockable pin |
| 7    | <b>SSFI--x---X</b> | snodo sferico inox- ss road eye                      |

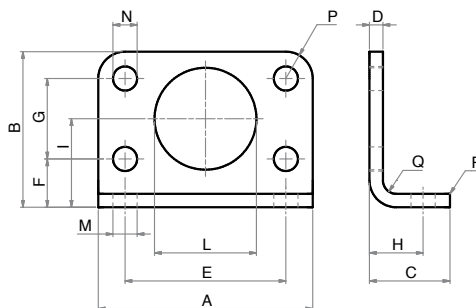
## PIEDINO FLANGIA

MPBI X

### FOOT FLANGE

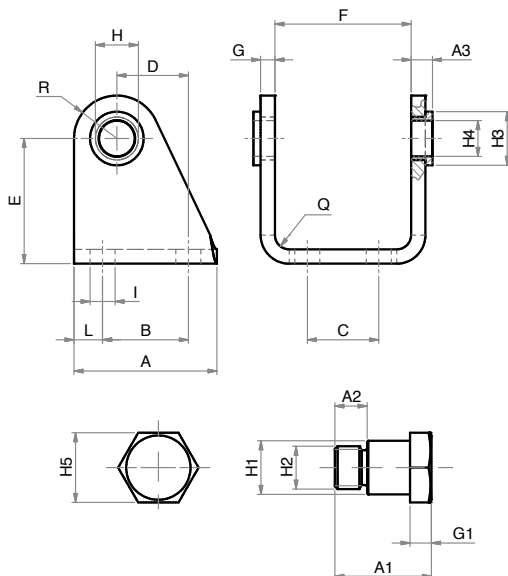


MATERIALE:  
ACCIAIO INOX AISI 304  
MATERIAL:  
AISI 304 STAINLESS STEEL



### DIMENSIONI - DIMENSIONS

| COD. | MPBI032X | MPBI040X | MPBI050X | MPBI063X |
|------|----------|----------|----------|----------|
| Ø mm | 32       | 40       | 50       | 63       |
| A    | 66       | 80       | 90       | 96       |
| B    | 49       | 58       | 70       | 80       |
| C    | 21       | 30       | 30       | 30       |
| D    | 4        | 5        | 6        | 6        |
| E    | 52       | 60       | 70       | 76       |
| F    | 14       | 18       | 20       | 20       |
| G    | 28       | 30       | 40       | 50       |
| H    | 14       | 20       | 20       | 20       |
| I    | 28       | 33       | 40       | 45       |
| L    | 30       | 38       | 45       | 45       |
| M    | 7        | 9        | 9        | 9        |
| N    | 7        | 9        | 9        | 9        |
| P    | 7        | 10       | 10       | 10       |
| Q    | 4        | 5        | 6        | 6        |
| R    | 2        | 2        | 2        | 2        |

**CERNIERA CON VITI**
**MCFI X**
**HINGE WITH SCREWS**


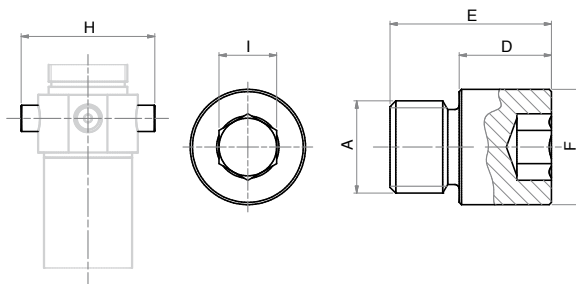
MATERIALE:  
ACCIAIO INOX AISI 304  
MATERIAL:  
AISI 304 STAINLESS STEEL

**DIMENSIONI - DIMENSIONS**

| COD. | MCFI032X | MCFI040X | MCFI050X | MCFI063X |
|------|----------|----------|----------|----------|
| Ø mm | 32       | 40       | 50       | 63       |
| A    | 40       | 50       | 54       | 65       |
| A1   | 18       | 21,6     | 26,4     | 31,5     |
| A2   | 6        | 7        | 9        | 13       |
| A3   | 6        | 7        | 8,5      | 8,5      |
| B    | 24       | 30       | 34       | 35       |
| C    | 20       | 28       | 36       | 42       |
| D    | 20       | 27       | 30       | 34       |
| E    | 35       | 40       | 45       | 50       |
| F    | 38,1     | 46,1     | 57,1     | 70,1     |
| G    | 4        | 5        | 6        | 6        |
| G1   | 4        | 5        | 6        | 6        |
| H    | 12       | 15       | 18       | 20       |
| H1   | 10       | 12       | 14       | 16       |
| H2   | M8x1     | M10x1    | M12x1,5  | M14x1,5  |
| H3   | 15       | 20       | 23       | 23       |
| H4   | 10       | 12       | 14       | 16       |
| H5   | 13       | 17       | 19       | 19       |
| I    | 7        | 9        | 9        | 9        |
| L    | 8        | 10       | 10       | 15       |
| P    | 12       | 13       | 14       | 16       |
| Q    | 4        | 5        | 6        | 6        |

**PERNI (COPPIA)**
**MPE X**
**PIVOTS (2pcs)**

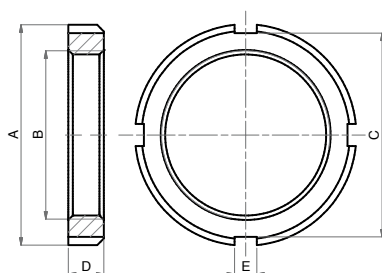
SERIE J



MATERIALE:  
ACCIAIO INOX AISI 304  
MATERIAL:  
AISI 304 STAINLESS STEEL

**DIMENSIONI - DIMENSIONS**

| COD. | MPE032X | MPE040X | MPE050X | MPE063X |
|------|---------|---------|---------|---------|
| Ø mm | 32      | 40      | 50      | 63      |
| A    | M8x1    | M10x1   | M12x1,5 | M14x1,5 |
| D    | 8       | 9,5     | 11      | 13      |
| E    | 14      | 16,5    | 20      | 28      |
| F    | 10      | 12      | 14      | 16      |
| I    | 5       | 6       | 6       | 8       |
| H    | 51      | 61      | 75      | 92      |

**GHIERA**
**GHI X**
**SLOTTED NUT**


MATERIALE:  
ACCIAIO INOX AISI 304  
MATERIAL:  
AISI 304 STAINLESS STEEL

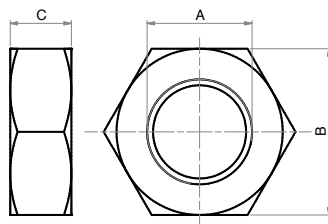
**DIMENSIONI - DIMENSIONS**

| COD. | GHI032X | GHI040X | GHI050.63X |
|------|---------|---------|------------|
| Ø mm | 32      | 40      | 50 - 63    |
| A    | 45      | 50      | 58         |
| B    | M30x1,5 | M38x1,5 | M45x1,5    |
| C    | 40      | 46      | 52         |
| D    | 7       | 8       | 9          |
| E    | 5       | 5       | 6          |

## DADO STELO INOX

DA X

### STAINLESS STEEL ROD NUT



MATERIALE:  
ACCIAIO INOX AISI 304  
MATERIAL:  
AISI 304 STAINLESS STEEL

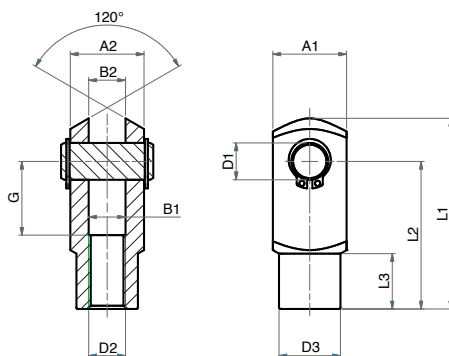
#### DIMENSIONI - DIMENSIONS

| COD. | DA10x1,25X | DA12x1,25X | DA16x1,5X |
|------|------------|------------|-----------|
| A    | M10x1,25   | M12x1,25   | M16x1,5   |
| B    | 17         | 19         | 24        |
| C    | 6          | 7          | 8         |

## FORCELLA CON PERNO INOX

FP X

### STAINLESS STEEL CLEVIS WITH PIN



MATERIALE:  
ACCIAIO INOX AISI 303  
MATERIAL:  
AISI 303 STAINLESS STEEL

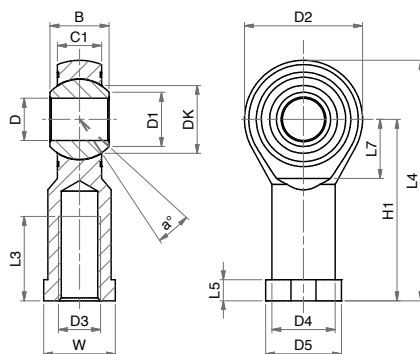
#### DIMENSIONI - DIMENSIONS

| COD. | FP10x1,25X | FP12x1,25X | FP16x1,5X |
|------|------------|------------|-----------|
| A1   | 20         | 24         | 32        |
| A2   | 20         | 24         | 32        |
| B1   | 10         | 12         | 16        |
| B2   | 10         | 12         | 16        |
| G    | 20         | 24         | 32        |
| L1   | 52         | 62         | 83        |
| L2   | 40         | 48         | 64        |
| L3   | 15         | 18         | 24        |
| ø D2 | M10x1,25   | M12x1,25   | M16x1,5   |
| ø D3 | 18         | 20         | 26        |
| ø D1 | 10         | 12         | 16        |

## SNODO SFERICO INOX

SSFI X

### STAINLESS STEEL ROD EYE



MATERIALE:  
CORPO IN ACCIAIO INOX AISI 304  
SNODO IN ACCIAIO INOX E PTFE  
MATERIAL:  
BODY IN AISI 304 STAINLESS STEEL  
EYE IN STAINLESS STEEL AND PTFE

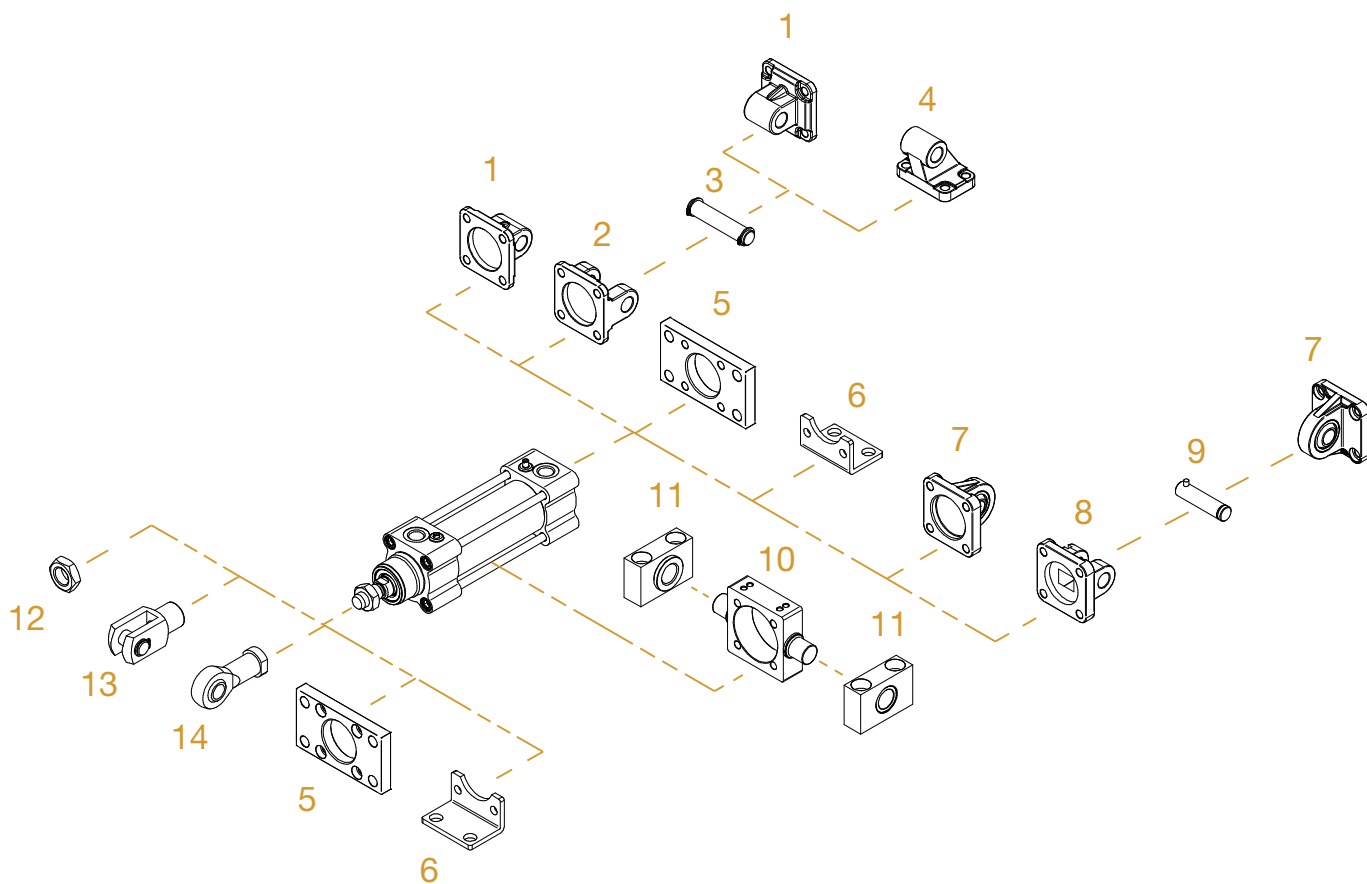
#### DIMENSIONI - DIMENSIONS

| COD. | SSFI10x1,25X | SSFI12x1,25X | SSFI16x1,5X |
|------|--------------|--------------|-------------|
| α°   | 13           | 13           | 15          |
| B    | 14           | 16           | 21          |
| C1   | 10,5         | 12           | 15          |
| D1   | 12,9         | 15,4         | 19,3        |
| D2   | 28           | 32           | 42          |
| D3   | M10x1,25     | M12x1,25     | M16x1,5     |
| D4   | 15           | 17,5         | 22          |
| D5   | 19           | 22           | 27          |
| DK   | 19,05        | 22,22        | 28,57       |
| D    | 10           | 12           | 16          |
| H1   | 43           | 50           | 64          |
| L3   | 20           | 22           | 28          |
| L4   | 57           | 66           | 85          |
| L5   | 6,5          | 6,5          | 8           |
| L7   | 15           | 17           | 23          |
| W    | 17           | 19           | 22          |

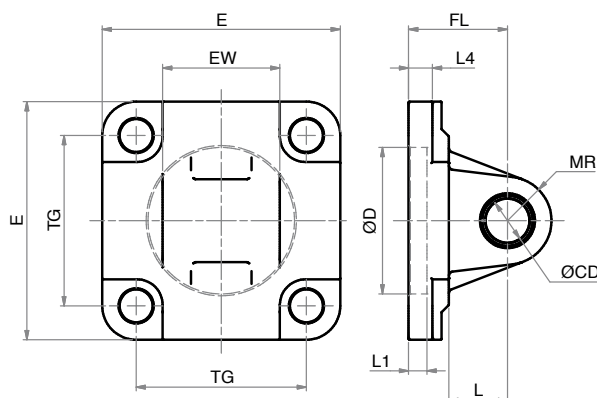


## ACCESSORI DI FISSAGGIO ISO 15552 INOX (UTILIZZABILI ANCHE PER CILINDRI ISO 21287)

### STAINLESS STEEL ISO 15552 MOUNTING PARTS (ALSO SUITABLE FOR ISO 21287 CYLINDERS)



| POS. | CODE               | DESCRIZIONE - DESCRIPTION  |
|------|--------------------|--|
| 1    | <b>CMI---X</b>     | cerniera maschio iso - iso male hinge                            |
| 2    | <b>CFI---X</b>     | cerniera femmina iso - iso female hinge                          |
| 3    | <b>PCF---X</b>     | perno per cerniera - pin for hinge                               |
| 4    | <b>ASI---X</b>     | articolazione a squadra iso - iso square hinge                   |
| 5    | <b>FI---X</b>      | flangia iso - iso flange   |
| 6    | <b>PBI---X</b>     | piedino basso iso - iso foot mounting                            |
| 7    | <b>CMSI---X</b>    | cerniera maschio snodata iso - iso male hinge with ball joint    |
| 8    | <b>CFSI---X</b>    | cerniera femmina stretta iso - iso narrow female hinge           |
| 9    | <b>PCFS---X</b>    | perno per cerniera stretta - pin for narrow hinge                |
| 10   | <b>CICT---X</b>    | cerniera intermedia per tiranti - intermediate hinge for tie rod |
| 11   | <b>SCI---X</b>     | supporto cerniera intermedia - support for intermediate hinge    |
| 12   | <b>DA--x---X</b>   | dado - nut   |
| 13   | <b>SSFI--x---X</b> | snodo sferico - swivel ball joint                                |
| 14   | <b>FC--x---X</b>   | forcella con clips - clevis with lockable pin                    |

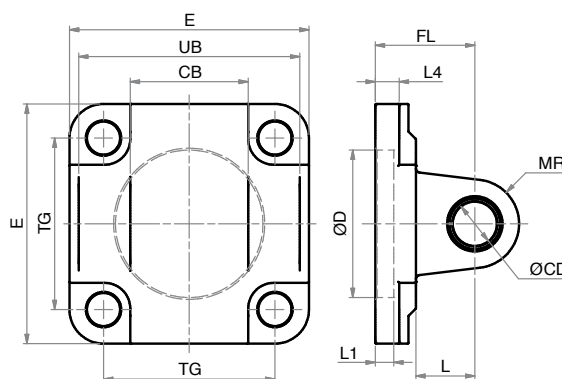
**CERNIERA MASCHIO ISO INOX (MP4)**
**STAINLESS STEEL ISO MALE HINGE (MP4)**


LA FORNITURA COMPRENDE:  
 n° 1 CERNIERA MASCHIO  
 n° 4 VITI  
 THE SUPPLY INCLUDES:  
 n° 1 MALE HINGE  
 n° 4 SCREWS

MATERIALE:  
 ACCIAIO INOX AISI 304  
 MATERIAL:  
 AISI 304 STAINLESS STEEL

**DIMENSIONI - DIMENSIONS**

| COD. | CMI032X | CMI040X | CMI050X | CMI063X | CMI080X | CMI100X | CMI125X |
|------|---------|---------|---------|---------|---------|---------|---------|
| Ø    | 32      | 40      | 50      | 63      | 80      | 100     | 125     |
| E    | 45      | 52      | 65      | 75      | 93      | 110     | 134     |
| EW   | 26      | 28      | 32      | 40      | 50      | 60      | 70      |
| TG   | 32,5    | 38      | 46,5    | 56,5    | 72      | 89      | 110     |
| FL   | 22      | 25      | 27      | 32      | 36      | 41      | 50      |
| L1   | 5       | 5       | 5       | 5       | 5       | 5       | 7       |
| L    | 13      | 16      | 16      | 21      | 22      | 27      | 30      |
| L4   | 5,5     | 5,5     | 6,5     | 6,5     | 10      | 10      | 10      |
| Ø D  | 30      | 35      | 40      | 45      | 45      | 55      | 60      |
| Ø CD | 10      | 12      | 12      | 16      | 16      | 20      | 25      |
| MR   | 10      | 12      | 12      | 16      | 16      | 20      | 25      |

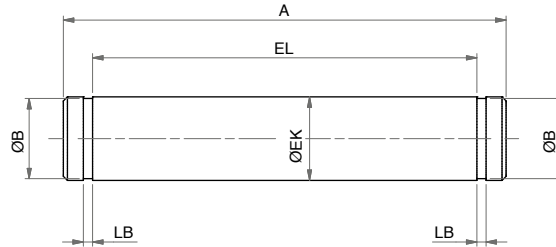
**CERNIERA FEMMINA ISO INOX (MP2)**
**STAINLESS STEEL ISO FEMALE HINGE (MP2)**


LA FORNITURA COMPRENDE:  
 n° 1 CERNIERA FEMMINA  
 n° 4 VITI  
 THE SUPPLY INCLUDES:  
 n° 1 FEMALE HINGE  
 n° 4 SCREWS

MATERIALE:  
 ACCIAIO INOX AISI 304  
 MATERIAL:  
 AISI 304 STAINLESS STEEL

**DIMENSIONI - DIMENSIONS**

| COD. | CFI032X | CFI040X | CFI050X | CFI063X | CFI080X | CFI100X | CFI125X |
|------|---------|---------|---------|---------|---------|---------|---------|
| Ø    | 32      | 40      | 50      | 63      | 80      | 100     | 125     |
| CB   | 26      | 28      | 32      | 40      | 50      | 60      | 70      |
| E    | 45      | 52      | 65      | 75      | 93      | 110     | 134     |
| FL   | 22      | 25      | 27      | 32      | 36      | 41      | 50      |
| L1   | 5       | 5       | 5       | 5       | 5       | 5       | 7       |
| L4   | 5,5     | 5,5     | 6,5     | 6,5     | 10      | 10      | 10      |
| L    | 13      | 16      | 16      | 21      | 22      | 27      | 30      |
| MR   | 10      | 12      | 12      | 16      | 16      | 20      | 25      |
| Ø CD | 10      | 12      | 12      | 16      | 16      | 20      | 25      |
| Ø D  | 30      | 35      | 40      | 45      | 45      | 55      | 60      |
| TG   | 32,5    | 38      | 46,5    | 56,5    | 72      | 89      | 110     |
| UB   | 45      | 52      | 60      | 70      | 90      | 110     | 130     |

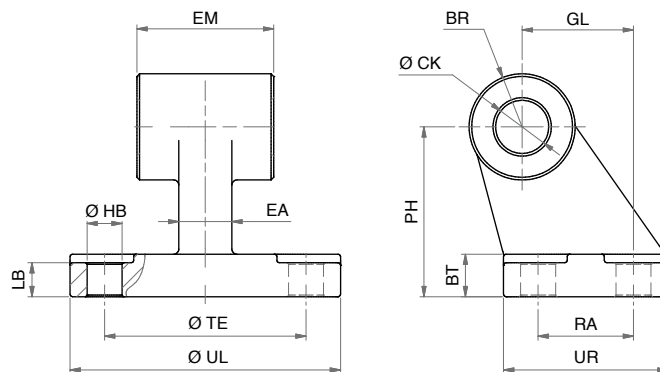
**PERNO PER CERNIERA INOX (AA4)**
**STAINLESS STEEL PIN FOR HINGE (AA4)**


LA FORNITURA COMPRENDE:  
 n° 1 PERNO  
 n° 2 SEEGER  
 THE SUPPLY INCLUDES:  
 n° 1 PIN  
 n° 2 RETAINING RING

MATERIALE:  
 ACCIAIO INOX AISI 304  
 MATERIAL:  
 AISI 304 STAINLESS STEEL

**DIMENSIONI - DIMENSIONS**

| COD. | PCF032X | PCF040X | PCF050X | PCF063X | PCF080X | PCF100X | PCF125X |
|------|---------|---------|---------|---------|---------|---------|---------|
| Ø    | 32      | 40      | 50      | 63      | 80      | 100     | 125     |
| A    | 53      | 60      | 68      | 78      | 98      | 118     | 139     |
| Ø B  | 9,6     | 11,5    | 11,5    | 15,2    | 15,2    | 19      | 23,9    |
| EL   | 46      | 53      | 61      | 71      | 91      | 111     | 132     |
| Ø EK | 10      | 12      | 12      | 16      | 16      | 20      | 25      |
| LB   | 1,1     | 1,1     | 1,1     | 1,1     | 1,1     | 1,3     | 1,3     |

**ARTICOLAZIONE A SQUADRA ISO INOX (AB7)**
**STAINLESS STEEL ISO SQUARE HINGE (AB7)**


LA FORNITURA COMPRENDE:  
 n°1 ARTICOLAZIONE A SQUADRA  
 THE SUPPLY INCLUDES:  
 n°1 SQUARE HINGE

MATERIALE:  
 ACCIAIO INOX AISI 304  
 MATERIAL:  
 AISI 304 STAINLESS STEEL

**DIMENSIONI - DIMENSIONS**

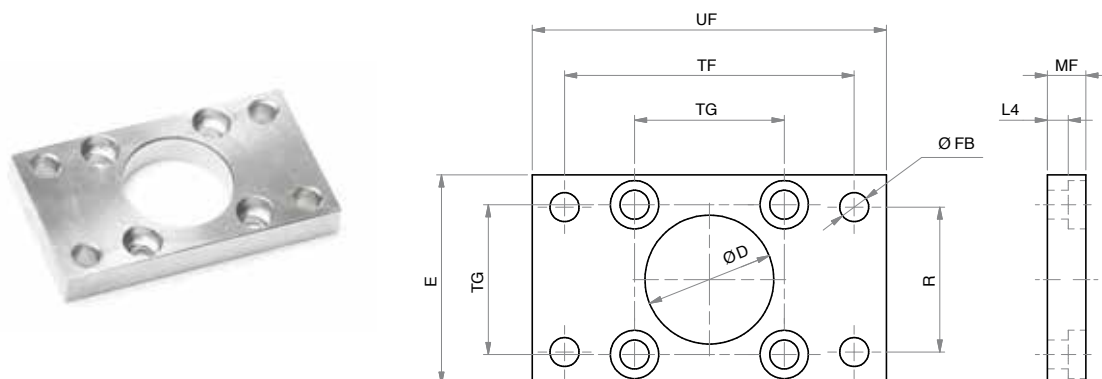
| COD. | ASI032X | ASI040X | ASI050X | ASI063X | ASI080X | ASI100X | ASI125X |
|------|---------|---------|---------|---------|---------|---------|---------|
| Ø    | 32      | 40      | 50      | 63      | 80      | 100     | 125     |
| BR   | 10      | 11      | 13      | 15      | 15      | 19      | 22,5    |
| BT   | 8       | 10      | 12      | 14      | 14      | 17      | 20      |
| CK   | 10      | 12      | 12      | 16      | 16      | 20      | 25      |
| EA   | 10      | 15      | 16      | 16      | 20      | 20      | 30      |
| EM   | 26      | 28      | 32      | 40      | 50      | 60      | 70      |
| GL   | 21      | 24      | 33      | 37      | 47      | 55      | 70      |
| LB   | 6,4     | 8,4     | 10,4    | 12,4    | 11,5    | 14,5    | 16,8    |
| Ø HB | 6,6     | 6,6     | 9       | 9       | 11      | 11      | 14      |
| PH   | 32      | 36      | 45      | 50      | 63      | 71      | 90      |
| RA   | 18      | 22      | 30      | 35      | 40      | 50      | 60      |
| TE   | 38      | 41      | 50      | 52      | 66      | 76      | 94      |
| UL   | 51      | 54      | 65      | 67      | 86      | 96      | 124     |
| UR   | 31      | 35      | 45      | 50      | 60      | 70      | 90      |



## FLANGIA ISO INOX (MF1 - MF2)

FI X

### STAINLESS STEEL ISO FLANGE (MF1 - MF2)



LA FORNITURA COMPRENDE:  
n° 1 FLANGIA  
n° 4 VITI  
THE SUPPLY INCLUDES:  
n° 1 FLANGE  
n° 4 SCREWS

MATERIALE:  
ACCIAIO INOX AISI 304  
MATERIAL:  
AISI 304 STAINLESS STEEL

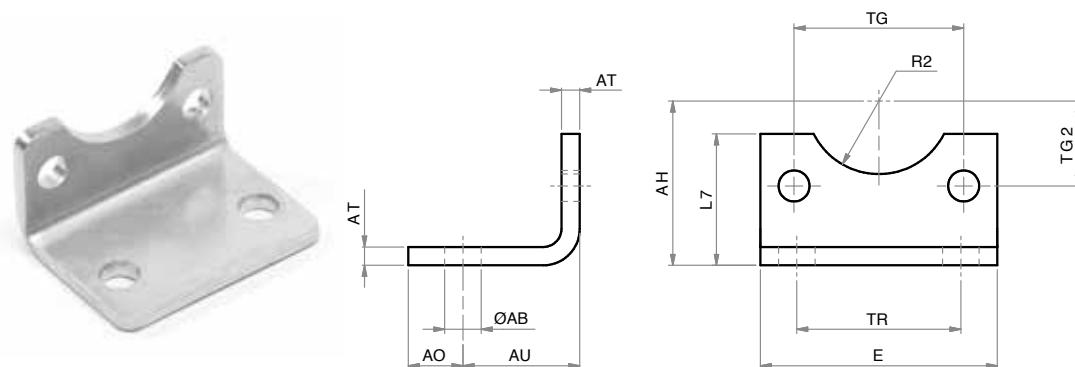
#### DIMENSIONI - DIMENSIONS

| COD. | FI032X | FI040X | FI050X | FI063X | FI080X | FI100X | FI125X |
|------|--------|--------|--------|--------|--------|--------|--------|
| Ø    | 32     | 40     | 50     | 63     | 80     | 100    | 125    |
| E    | 45     | 52     | 65     | 75     | 95     | 115    | 140    |
| L4   | 5      | 5      | 6,5    | 6,5    | 9      | 9      | 10,5   |
| MF   | 10     | 10     | 12     | 12     | 16     | 16     | 20     |
| Ø D  | 30     | 35     | 40     | 45     | 45     | 55     | 60     |
| Ø FB | 7      | 9      | 9      | 9      | 12     | 14     | 16     |
| R    | 32     | 36     | 45     | 50     | 63     | 75     | 90     |
| TF   | 64     | 72     | 90     | 100    | 126    | 150    | 180    |
| TG   | 32,5   | 38     | 46,5   | 56,5   | 72     | 89     | 110    |
| UF   | 80     | 90     | 110    | 120    | 150    | 170    | 205    |

## PIEDINO BASSO ISO INOX (MS1)

PBI X

### STAINLESS STEEL ISO FOOT MOUNTING (MS1)

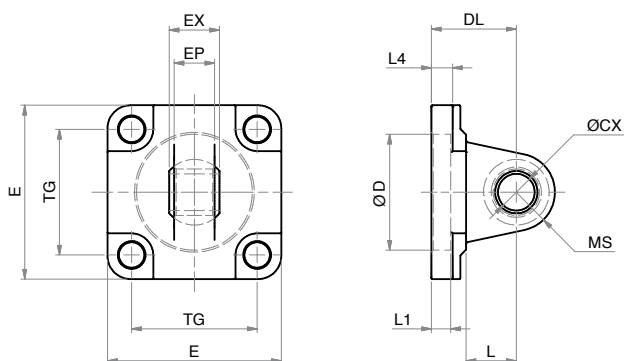


LA FORNITURA COMPRENDE:  
n° 1 PIEDINO  
n° 2 VITI  
THE SUPPLY INCLUDES:  
n° 1 FOOT MOUNTING  
n° 2 SCREWS

MATERIALE:  
ACCIAIO INOX AISI 304  
MATERIAL:  
AISI 304 STAINLESS STEEL

#### DIMENSIONI - DIMENSIONS

| COD. | PBI032X | PBI040X | PBI050X | PBI063X | PBI080X | PBI100X | PBI125X |
|------|---------|---------|---------|---------|---------|---------|---------|
| Ø    | 32      | 40      | 50      | 63      | 80      | 100     | 125     |
| AH   | 32      | 36      | 45      | 50      | 63      | 71      | 90      |
| AO   | 11      | 8       | 15      | 13      | 14      | 16      | 25      |
| AT   | 4       | 4       | 5       | 5       | 6       | 6       | 8       |
| AU   | 24      | 28      | 32      | 32      | 41      | 41      | 45      |
| E    | 45      | 52      | 65      | 75      | 95      | 115     | 140     |
| L7   | 30      | 30      | 36      | 35      | 47      | 53      | 70      |
| Ø AB | 7       | 10      | 10      | 10      | 12      | 14,5    | 16,5    |
| R2   | 15      | 17,5    | 20      | 22,5    | 22,5    | 27,5    | 30      |
| TG2  | 16,25   | 19      | 23,25   | 28,25   | 36      | 44,5    | 55      |
| TG   | 32,5    | 38      | 46,5    | 56,5    | 72      | 89      | 110     |
| TR   | 32      | 36      | 45      | 50      | 63      | 75      | 90      |

**CERNIERA MASCHIO SNODATA ISO INOX (MP6)**
**STAINLESS STEEL ISO MALE HINGE WITH BALL JOINT (MP6)**


LA FORNITURA COMPRENDE:  
 n° 1 CERNIERA MASCHIO  
 n° 4 VITI  
 THE SUPPLY INCLUDES:  
 n° 1 MALE HINGE  
 n° 4 SCREWS

MATERIALE:  
 ACCIAIO INOX AISI 316  
 MATERIAL:  
 AISI 316 STAINLESS STEEL

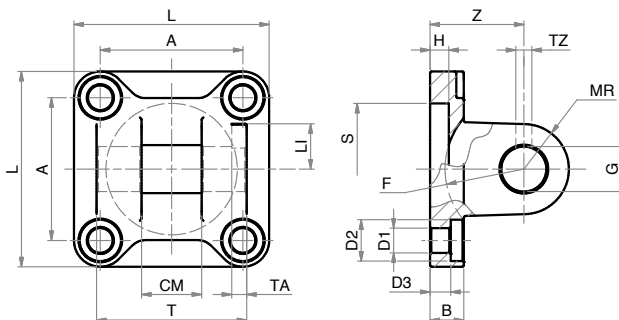
**DIMENSIONI - DIMENSIONS**

| COD. | CMSI032 | CMSI040 | CMSI050 | CMSI063 | CMSI080 | CMSI100 | CMSI125 | CMSI160 | CMSI200 |
|------|---------|---------|---------|---------|---------|---------|---------|---------|---------|
| Ø    | 32      | 40      | 50      | 63      | 80      | 100     | 125     | 160     | 200     |
| DL   | 22      | 25      | 27      | 32      | 36      | 41      | 50      | 55      | 60      |
| EP   | 10,5    | 12      | 15      | 15      | 18      | 18      | 25      | 30      | 30      |
| EX   | 14      | 16      | 21      | 21      | 25      | 25      | 37      | 43      | 43      |
| E    | 45      | 52      | 65      | 75      | 95      | 115     | 140     | 195     | 238     |
| L1   | 7       | 7       | 7       | 7       | 9       | 9       | 9       | 7       | 7       |
| L4   | 5,5     | 5,5     | 6,5     | 6,5     | 10      | 10      | 10      | 10      | 11      |
| L    | 12      | 15      | 15      | 20      | 20      | 25      | 30      | 35      | 35      |
| MS   | 16      | 18      | 21      | 23      | 28      | 30      | 40      | 44      | 47      |
| Ø CX | 10      | 12      | 16      | 16      | 20      | 20      | 30      | 35      | 35      |
| Ø D  | 30      | 35      | 40      | 45      | 45      | 55      | 60      | 65      | 75      |
| TG   | 32,5    | 38      | 46,5    | 56,5    | 72      | 89      | 110     | 140     | 175     |

## CERNIERA FEMMINA STRETTA ISO INOX (AB6)

CFSI X6

### STAINLESS STEEL ISO NARROW FEMALE HINGE (AB6)



LA FORNITURA COMPRENDE:  
n° 1 CERNIERA FEMMINA  
n° 4 VITI  
THE SUPPLY INCLUDES:  
n° 1 FEMALE HINGE  
n° 4 SCREWS

MATERIALE:  
ACCIAIO INOX AISI 316  
MATERIAL:  
AISI 316 STAINLESS STEEL

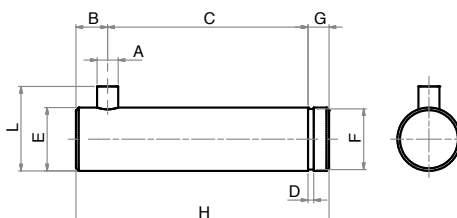
#### DIMENSIONI - DIMENSIONS

| COD.   | CFSI032 | CFSI040 | CFSI050 | CFSI063 | CFSI080 | CFSI100 | CFSI125 | CFSI160 | CFSI200 |
|--------|---------|---------|---------|---------|---------|---------|---------|---------|---------|
| Ø      | 32      | 40      | 50      | 63      | 80      | 100     | 125     | 160     | 200     |
| A      | 32,5    | 38      | 46,5    | 56,5    | 72      | 89      | 110     | 140     | 175     |
| B      | 9       | 9       | 1       | 1       | 14      | 14      | 20      | 20      | 25      |
| CM     | 14      | 16      | 21      | 21      | 25      | 25      | 37      | 43      | 43      |
| D1     | 6,6     | 6,6     | 9       | 9       | 11      | 11      | 14      | 18      | 18      |
| D2     | 11      | 11      | 15      | 15      | 18      | 18      | 20      | 26      | 26      |
| D3     | 5,5     | 5,5     | 6,5     | 6,5     | 10      | 10      | 10      | 10      | 11      |
| F min. | 17      | 20      | 22      | 25      | 30      | 32      | 42      | 46      | 49      |
| G      | 10      | 12      | 16      | 16      | 20      | 20      | 30      | 35      | 35      |
| H      | 5       | 5       | 5       | 5       | 5       | 5       | 7       | 7       | 7       |
| L1     | 11,5    | 12      | 14      | 14      | 16      | 16      | 24      | 26,5    | 26,5    |
| L      | 45      | 52      | 65      | 75      | 95      | 115     | 140     | 180     | 220     |
| MR     | 10      | 12      | 14      | 18      | 20      | 22      | 25      | 30      | 30      |
| S      | 30      | 35      | 40      | 45      | 45      | 55      | 60      | 65      | 75      |
| TA     | 3       | 4       | 4       | 4       | 4       | 4       | 6       | 6       | 6       |
| TZ     | 3,3     | 4,3     | 4,3     | 4,3     | 4,3     | 6,3     | 6,3     | 6,3     | 6,3     |
| T      | 34      | 40      | 45      | 51      | 65      | 75      | 97      | 122     | 122     |
| Z      | 22      | 25      | 27      | 32      | 36      | 41      | 50      | 55      | 60      |

## PERNO PER CERNIERA STRETTA INOX (AA6)

PCFS X6

### STAINLESS STEEL PIN FOR NARROW HINGE (AA6)

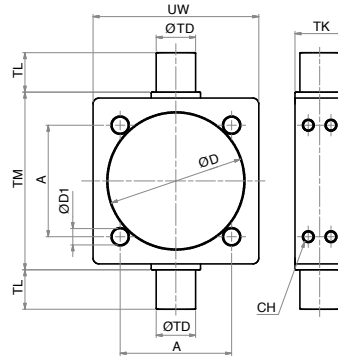


LA FORNITURA COMPRENDE:  
n° 1 PERNO  
n° 1 SEEGER  
THE SUPPLY INCLUDES:  
n° 1 PIN  
n° 1 RETAINING RING

MATERIALE:  
ACCIAIO INOX AISI 316  
MATERIAL:  
AISI 316 STAINLESS STEEL

#### DIMENSIONI - DIMENSIONS

| COD.  | PCFS032 | PCFS040 | PCFS050 | PCFS063 | PCFS080 | PCFS100 | PCFS125 | PCFS160 | PCFS200 |
|-------|---------|---------|---------|---------|---------|---------|---------|---------|---------|
| Ø CIL | 32      | 40      | 50      | 63      | 80      | 100     | 125     | 160     | 200     |
| A     | 3       | 4       | 4       | 4       | 4       | 4       | 6       | 6       | 6       |
| B     | 4,5     | 6       | 6       | 6       | 6       | 6       | 9       | 9       | 9       |
| D     | 1,1     | 1,1     | 1,1     | 1,1     | 1,3     | 1,3     | 1,6     | 1,6     | 1,6     |
| E     | 10      | 12      | 16      | 16      | 20      | 20      | 30      | 35      | 35      |
| F     | 9,6     | 11,5    | 15,2    | 15,2    | 19      | 19      | 28,6    | 33      | 33      |
| G     | 4       | 4       | 5       | 5       | 6       | 6       | 7       | 7       | 7       |
| H     | 41      | 48      | 54      | 60      | 75      | 85      | 110     | 135     | 135     |
| L     | 14      | 16      | 20      | 20      | 24      | 24      | 36      | 41      | 41      |

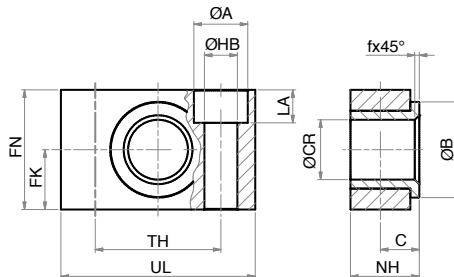
**CERNIERA INTERMEDIA INOX PER TIRANTI (MT4)**
**STAINLESS STEEL INTERMEDIATE HINGE FOR TIE RODS (MT4)**


LA FORNITURA COMPRENDE:  
N°1 CERNIERA INTERMEDIA  
THE SUPPLY INCLUDES:  
N°1 INTERMEDIATE HINGE

MATERIALE:  
ACCIAIO INOX AISI 304  
MATERIAL:  
AISI 304 STAINLESS STEEL

**DIMENSIONI - DIMENSIONS**

| COD. | CICT032X | CICT040X | CICT050X | CICT063X | CICT080X | CICT100X | CICT125X |
|------|----------|----------|----------|----------|----------|----------|----------|
| Ø    | 32       | 40       | 50       | 63       | 80       | 100      | 125      |
| A    | 32,5     | 38       | 46,5     | 56,5     | 72       | 89       | 110      |
| CH   | 2,5      | 2,5      | 3        | 3        | 4        | 4        | 5        |
| Ø D1 | 6,25     | 6,25     | 8,25     | 8,25     | 10,25    | 10,25    | 12,25    |
| Ø D  | 37       | 46       | 56       | 69       | 87       | 107      | 133      |
| Ø TD | 12       | 16       | 16       | 20       | 20       | 25       | 25       |
| TK   | 15       | 20       | 20       | 25       | 25       | 30       | 32       |
| TL   | 12       | 16       | 16       | 20       | 20       | 25       | 25       |
| TM   | 50       | 63       | 75       | 90       | 110      | 132      | 160      |
| UW   | 46       | 59       | 69       | 84       | 102      | 125      | 155      |

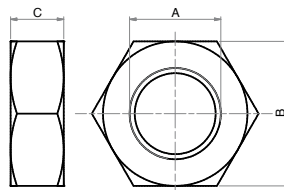
**SUPPORTO PER CERNIERA INTERMEDIA (AT4)**
**SUPPORT FOR INTERMEDIATE HINGE (AT4)**


LA FORNITURA COMPRENDE: N° 1 SUPPORTO, N° 2 VITI  
THE SUPPLY INCLUDES: n° 1 SUPPORT, n° 2 SCREWS

MATERIALE: CORPO IN ACCIAIO INOX 304, BOCCOLA IN TECNOPOLIMERO  
MATERIAL: BODY IN AISI 304 STAINLESS STEEL, BUSH IN TECHNOPOLYMER

**DIMENSIONI - DIMENSIONS**

| COD. | SCI032X | SCI040.050X | SCI063.080X | SCI100.125X | SCI160.200X |
|------|---------|-------------|-------------|-------------|-------------|
| Ø    | 32      | 40-50       | 63-80       | 100-125     | 160-200     |
| C    | 10,5    | 12          | 13          | 16          | 22,5        |
| FK   | 15      | 18          | 20          | 25          | 30          |
| FN   | 30      | 36          | 40          | 50          | 60          |
| f    | 1       | 1,6         | 1,6         | 2           | 2,5         |
| LA   | 7       | 9           | 11          | 13          | 17          |
| NH   | 18      | 21          | 23          | 28,5        | 40          |
| Ø A  | 11      | 15          | 18          | 20          | 26          |
| Ø B  | 22      | 28          | 32          | 39          | 45          |
| Ø CR | 12      | 16          | 20          | 25          | 32          |
| Ø HB | 6,6     | 9           | 11          | 14          | 18          |
| TH   | 32      | 36          | 42          | 50          | 60          |
| UL   | 46      | 55          | 65          | 75          | 92          |

**DADO STELO**
**ROD NUT**


MATERIALE:  
ACCIAIO INOX AISI 304  
MATERIAL:  
AISI 304 STAINLESS STEEL

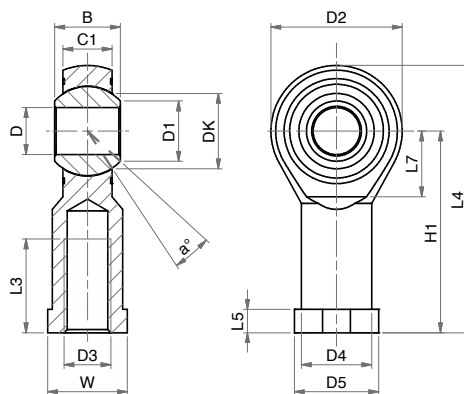
**DIMENSIONI - DIMENSIONS**

| COD. | DA06x1X | DA08x1,25X | DA10x1,25X | DA12x1,25X | DA16x1,5X | DA20x1,5X | DA27x2X | DA36x2X | DA42x2X | DA48x2X |
|------|---------|------------|------------|------------|-----------|-----------|---------|---------|---------|---------|
| A    | M6      | M8         | M10x1,25   | M12x1,25   | M16x1,5   | M20x1,5   | M27x2   | M36x2   | M42x2   | M48x2   |
| B    | 10      | 13         | 17         | 19         | 24        | 30        | 41      | 55      | 65      | 75      |
| C    | 4       | 5          | 6          | 7          | 8         | 9         | 12      | 14      | 16      | 18      |

## SNODO SFERICO INOX

SSFI X

### STAINLESS STEEL ROD EYE



MATERIALE:  
CORPO IN ACCIAIO  
INOX AISI 304  
SNODO IN ACCIAIO  
INOX E PTFE  
MATERIAL:  
BODY IN  
AISI 304 STAINLESS STEEL  
EYE IN STAINLESS STEEL  
AND PTFE

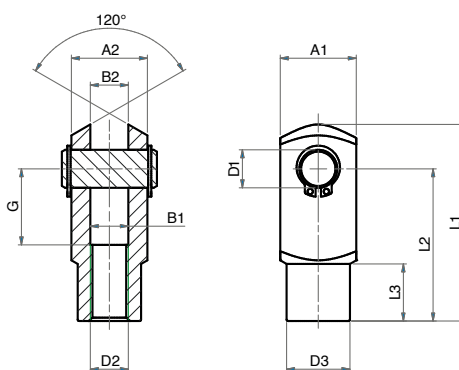
### DIMENSIONI - DIMENSIONS

| COD. | SSFI08x1,25X | SSFI10x1,25X | SSFI12x1,25X | SSFI16x1,5X | SSFI20x1,5X | SSFI27x2X | SSFI36x2X |
|------|--------------|--------------|--------------|-------------|-------------|-----------|-----------|
| α°   | 14           | 13           | 13           | 15          | 14          | 17        | 16        |
| B    | 12           | 14           | 16           | 21          | 25          | 37        | 43        |
| C1   | 9            | 10,5         | 12           | 15          | 18          | 25        | 28        |
| D1   | 10,4         | 12,9         | 15,4         | 19,3        | 24,3        | 34,8      | 37,7      |
| D2   | 24           | 28           | 32           | 42          | 50          | 70        | 80        |
| D3   | M8           | M10x1,25     | M12x1,25     | M16x1,5     | M20x1,5     | M27x2     | M36x2     |
| D4   | 12,5         | 15           | 17,5         | 22          | 27,5        | 40        | 46        |
| D5   | 16           | 19           | 22           | 27          | 34          | 50        | 58        |
| DK   | 15,87        | 19,05        | 22,22        | 28,57       | 34,92       | 50,8      | 57,15     |
| D    | 8            | 10           | 12           | 16          | 20          | 30        | 35        |
| H1   | 36           | 43           | 50           | 64          | 77          | 110       | 125       |
| L3   | 16           | 20           | 22           | 28          | 33          | 51        | 56        |
| L4   | 48           | 57           | 66           | 85          | 102         | 145       | 165       |
| L5   | 5            | 6,5          | 6,5          | 8           | 10          | 15        | 17        |
| L7   | 13           | 15           | 17           | 23          | 27          | 36        | 41        |
| W    | 14           | 17           | 19           | 22          | 30          | 41        | 50        |

## FORCELLA CON PERNO INOX

FP X

### STAINLESS STEEL CLEVIS WITH PIN



MATERIALE:  
ACCIAIO INOX AISI 303  
MATERIAL:  
AISI 303 STAINLESS STEEL

### DIMENSIONI - DIMENSIONS

| COD. | FP08x1,25X | FP10x1,25X | FP12x1,25X | FP16x1,5X | FP20x1,5X | FP27x2X | FP36x2X |
|------|------------|------------|------------|-----------|-----------|---------|---------|
| A1   | 16         | 20         | 24         | 32        | 40        | 55      | 70      |
| A2   | 16         | 20         | 24         | 32        | 40        | 55      | 70      |
| B1   | 8          | 10         | 12         | 16        | 20        | 30      | 35      |
| B2   | 8          | 10         | 12         | 16        | 20        | 30      | 35      |
| G    | 16         | 20         | 24         | 32        | 40        | 54      | 72      |
| L1   | 42         | 52         | 62         | 83        | 105       | 148     | 188     |
| L2   | 32         | 40         | 48         | 64        | 80        | 110     | 144     |
| L3   | 12         | 15         | 18         | 24        | 30        | 38      | 40      |
| ∅ D2 | M8x1,25    | M10x1,25   | M12x1,25   | M16x1,5   | M20x1,5   | M27x2   | M36x2   |
| ∅ D3 | 14         | 18         | 20         | 26        | 34        | 48      | 60      |
| ∅ D1 | 8          | 10         | 12         | 16        | 20        | 30      | 35      |