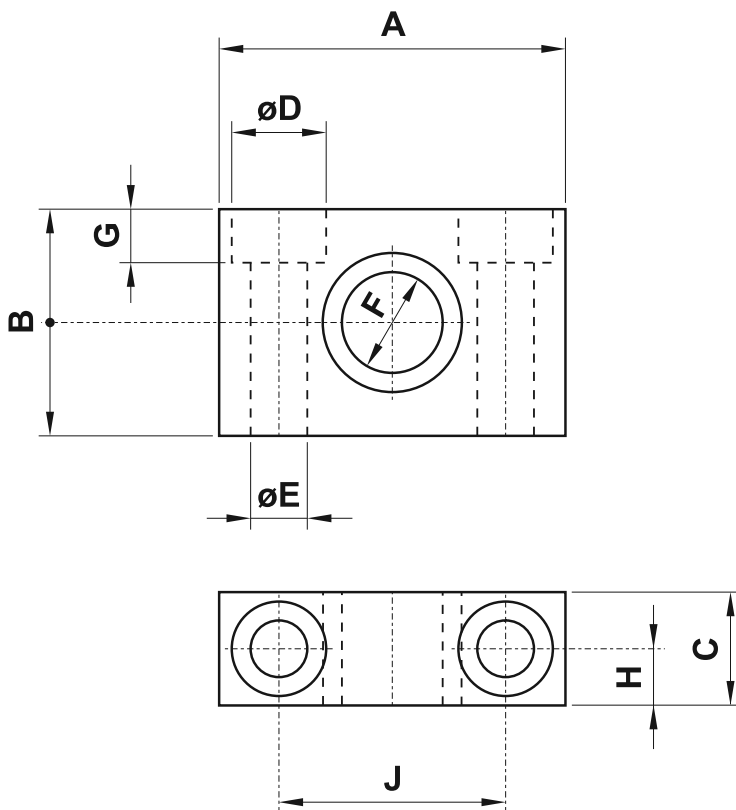
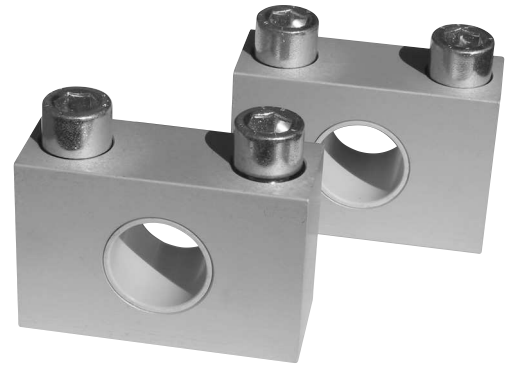


SNODO PER CERNIERA INTERMEDIA (support for intermediate trunnion)



sigla* part number*	per alesaggio for bore	A	B	C	D	E	F	G	H	J
SNINT 032 B	32	46	30	15	10.5	6.5	∅12	6.5	7.5	32
SNINT 040-050 B	40-50	55	35	20	14	9	∅16	8	10	36
SNINT 063-080 B	63-80	65	40	20	17	11	∅20	12	10	42
SNINT 100-125 B	100-125	75	50	30	19	14	∅25	10	15	50

* La sigla si riferisce a una coppia di snodi

* The part number is referred to a couple of elements