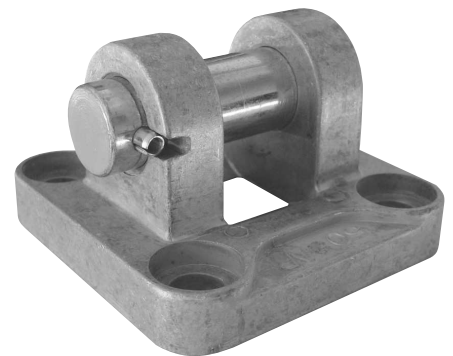
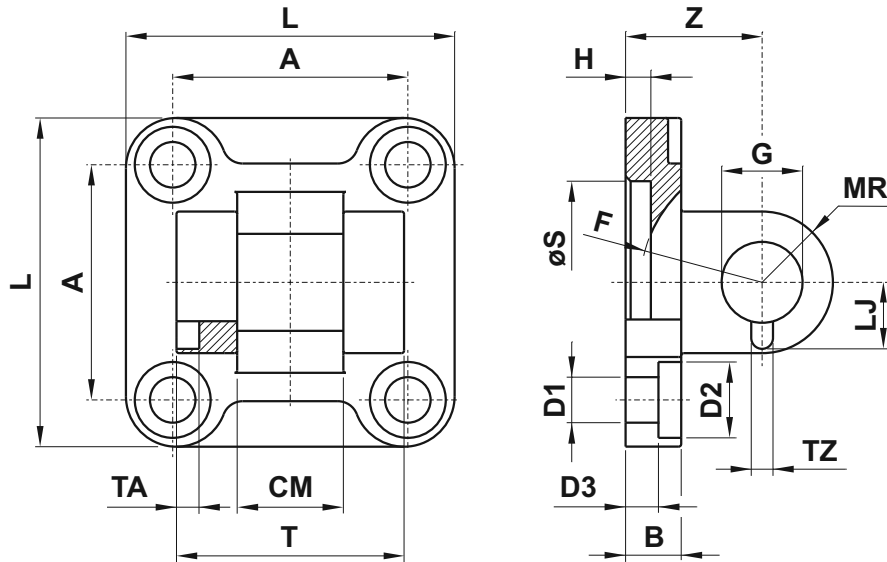


CERNIERA FEMMINA STRETTA PER ARTICOLAZIONE CON TESTINA SNODATA DIN 648 K (narrow female hinge for joint with articulated head DIN 648 K)



6

sigla part number	per alesaggio for bore	L	T	CM	A	Z	H	B	D3	S	G	MR	D1	D2	TA	TZ	LJ	F
CFSIS032	32	45	34	14	32.5	22	5	9	5.5	30	∅10	10	∅6.6	∅11	3	3.3	11.5	17
CFSIS040	40	52	40	16	38	25	5	9	5.5	35	∅12	12	∅6.6	∅11	4	4.3	12	20
CFSIS050	50	65	45	21	46.5	27	5	11	6.5	40	∅16	14	∅9	∅15	4	4.3	14	22
CFSIS063	63	75	51	21	56.5	32	5	11	6.5	45	∅16	18	∅9	∅15	4	4.3	14	25
CFSIS080	80	95	65	25	72	36	5	14	10	45	∅20	20	∅11	∅18	4	4.3	16	30
CFSIS100	100	115	75	25	89	41	5	14	10	55	∅20	22	∅11	∅18	4	6.3	16	32
CFSIS125	125	140	97	37	110	50	7	20	10	60	∅30	25	∅14	∅20	6	6.3	24	42
CFSIS160	160	180	122	43	140	55	7	20	10	65	∅35	30	∅18	∅26	6	6.3	26.5	46
CFSIS200	200	220	122	43	175	60	7	25	11	75	∅35	30	∅18	∅26	6	6.3	26.5	49