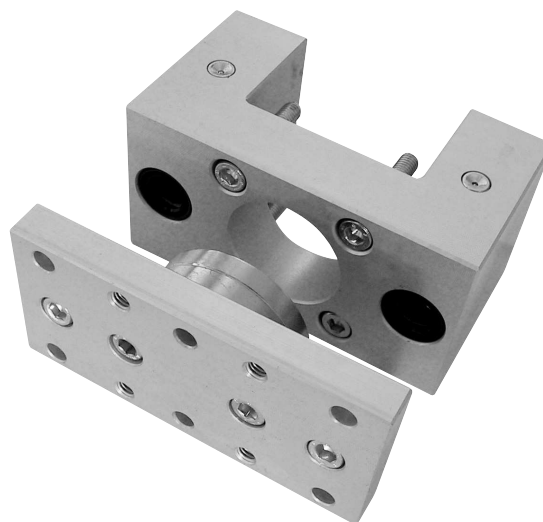


## kit unità di guida

kit for guiding units

Il kit comprende tutti i pezzi necessari per il montaggio escluso gli steli, per la cui realizzazione il disegno si trova sul sito internet:  
<http://www.azpneumatica.com/azweb/ita/kitguid.htm>

The kit includes all the necessary pieces. Rods are not included. The drawing for rod machining is available in internet at the following address:  
<http://www.azpneumatica.com/azweb/ita/kitguid.htm>



### Tipo "U" con bronzine

*type "U" with sintered bronze rod guide*

per alesaggio for bore	sigla part number	codice code
12-16	<b>KUB012-016</b>	27.271.0
20	<b>KUB020</b>	27.272.0
25	<b>KUB025</b>	27.273.0
32	<b>KUB032</b>	27.274.0
40	<b>KUB040</b>	27.275.0
50	<b>KUB050</b>	27.278.0
63	<b>KUB063</b>	27.279.0
80	<b>KUB080</b>	27.280.0
100	<b>KUB100</b>	27.281.0

### Tipo "H" con bronzine

*type "H" with sintered bronze rod guide*

per alesaggio for bore	sigla part number	codice code
12-16	<b>KHB012-016</b>	27.259.0
20	<b>KHB020</b>	27.250.0
25	<b>KHB025</b>	27.251.0
32	<b>KHB032</b>	27.252.0
40	<b>KHB040</b>	27.253.0
50	<b>KHB050</b>	27.254.0
63	<b>KHB063</b>	27.255.0
80	<b>KHB080</b>	27.256.0
100	<b>KHB100</b>	27.257.0

### Tipo "H" con cuscinetti a rotolamento

*type "H" with linear ball bearings*

per alesaggio for bore	sigla part number	codice code
12-16	<b>KHS012-016</b>	27.260.0
20	<b>KHS020</b>	27.261.0
25	<b>KHS025</b>	27.268.0
32	<b>KHS032</b>	27.262.0
40	<b>KHS040</b>	27.263.0
50	<b>KHS050</b>	27.264.0
63	<b>KHS063</b>	27.265.0
80	<b>KHS080</b>	27.266.0
100	<b>KHS100</b>	27.267.0