

valvole ad azionamento meccanico

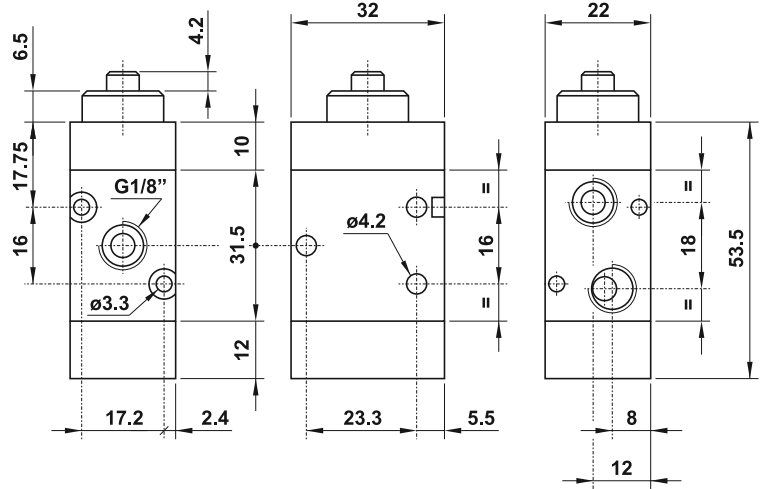
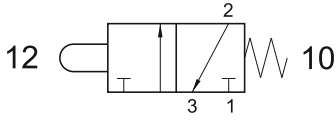
mechanically actuated valves



321 MP

3/2 1/8" puntale - ritorno a molla

3/2 1/8" tappet - spring return



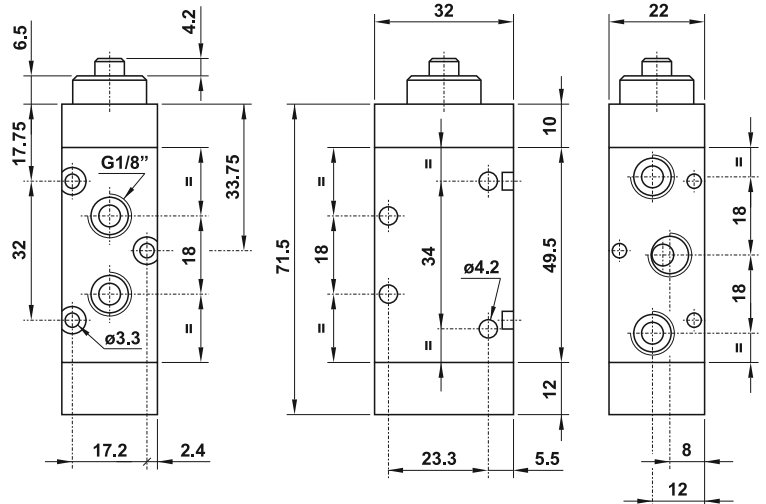
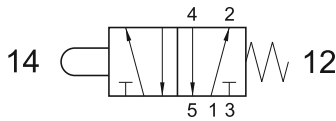
Forza di azionamento: 32.36 N

Actuating force: 32.36 N

521 MP

5/2 1/8" puntale - ritorno a molla

5/2 1/8" tappet - spring return



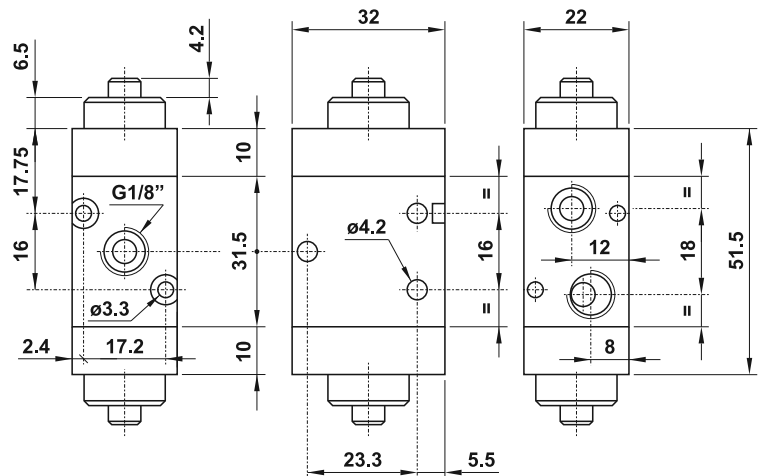
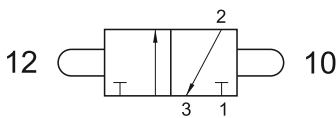
Forza di azionamento: 32.36 N

Actuating force: 32.36 N

321 2P

3/2 1/8" doppio puntale

3/2 1/8" double tappet



SOLO VERSIONE IN ALLUMINIO
ONLY ALUMINIUM VERSION

valvole ad azionamento meccanico

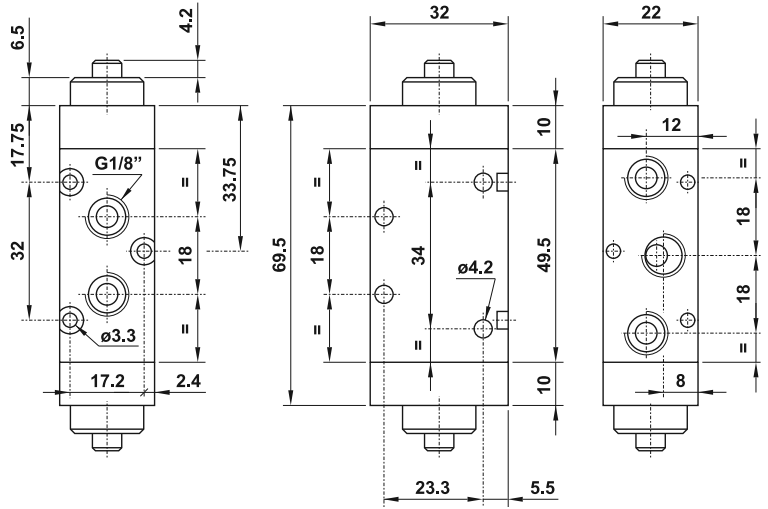
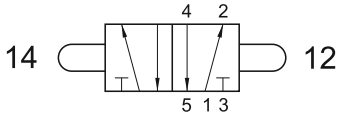
mechanically actuated valves



521 2P

5/2 1/8" doppio puntale

5/2 1/8" double tappet

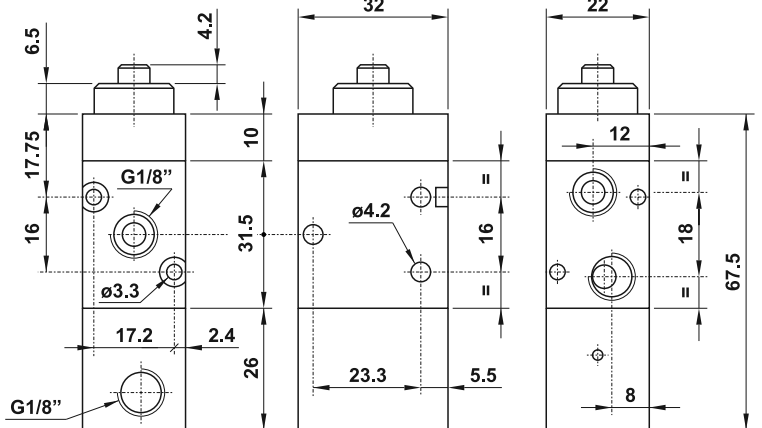
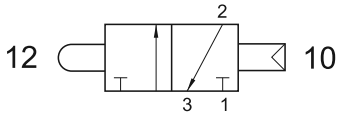


SOLO VERSIONE IN ALLUMINIO
ONLY ALUMINIUM VERSION

321 CP

3/2 1/8" puntale - ritorno a comando pneumatico

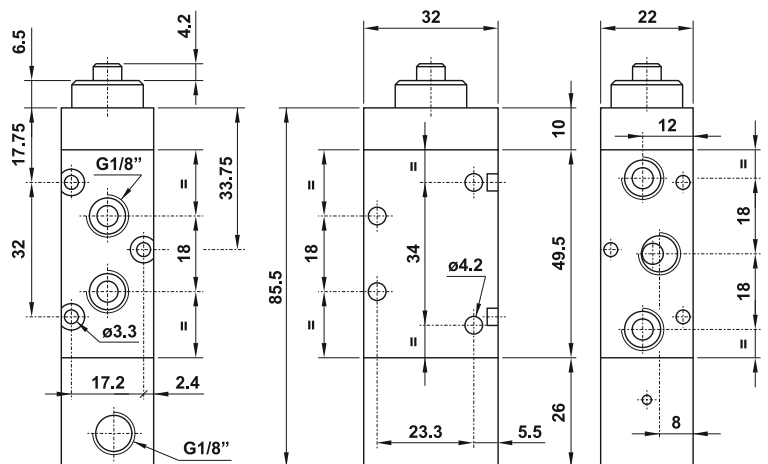
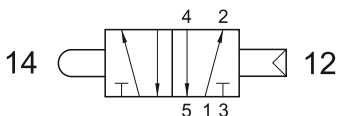
3/2 1/8" tappet - separate pneumatically piloted return



521 CP

5/2 1/8" puntale - ritorno a comando pneumatico

5/2 1/8" tappet - separate pneumatically piloted return



valvole ad azionamento meccanico

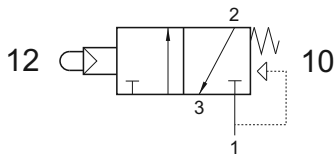
mechanically actuated valves



321 MPS

3/2 1/8" NC pulsante servopilotato - ritorno a molla

3/2 1/8" NC servo-piloted tappet - spring return



Forza di azionamento in funzione della pressione di alimentazione

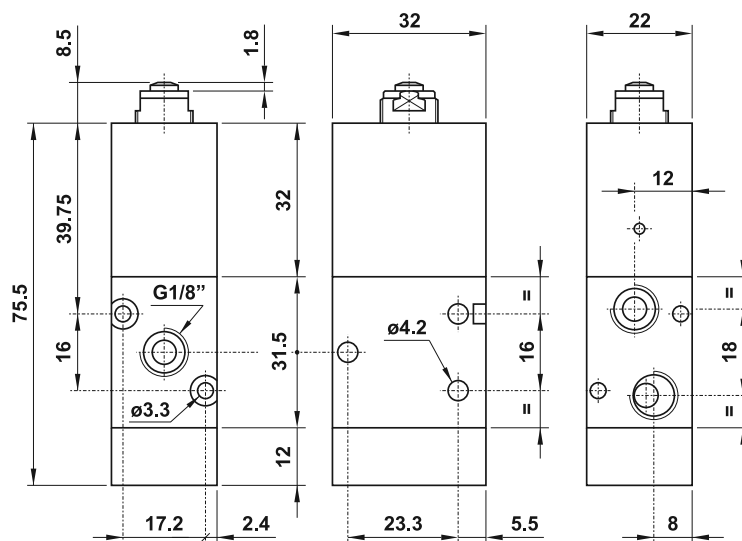
Actuating force related to inlet pressure

P₁: 2.5 bar

P₁: 10 bar

F: 4.5 N

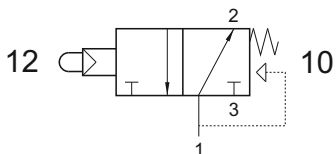
F: 14.2 N



321 MPSA

3/2 1/8" NA pulsante servopilotato - ritorno a molla

3/2 1/8" NO servo-piloted tappet - spring return



Forza di azionamento in funzione della pressione di alimentazione

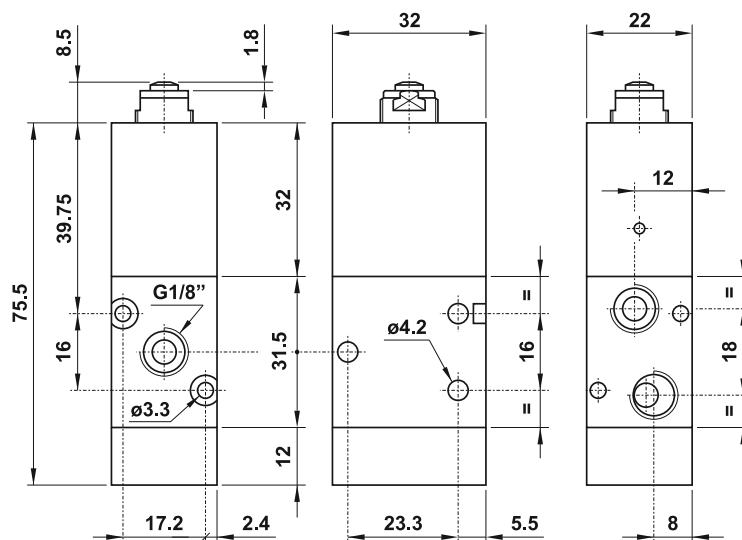
Actuating force related to inlet pressure

P₁: 2.5 bar

P₁: 10 bar

F: 4.5 N

F: 14.2 N

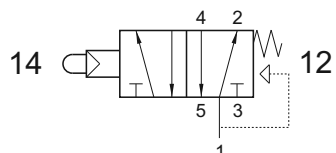


SOLO VERSIONE IN ALLUMINIO
ONLY ALUMINIUM VERSION

521 MPS

5/2 1/8" pulsante servopilotato - ritorno a molla

5/2 1/8" servo-piloted tappet - spring return



Forza di azionamento in funzione della pressione di alimentazione

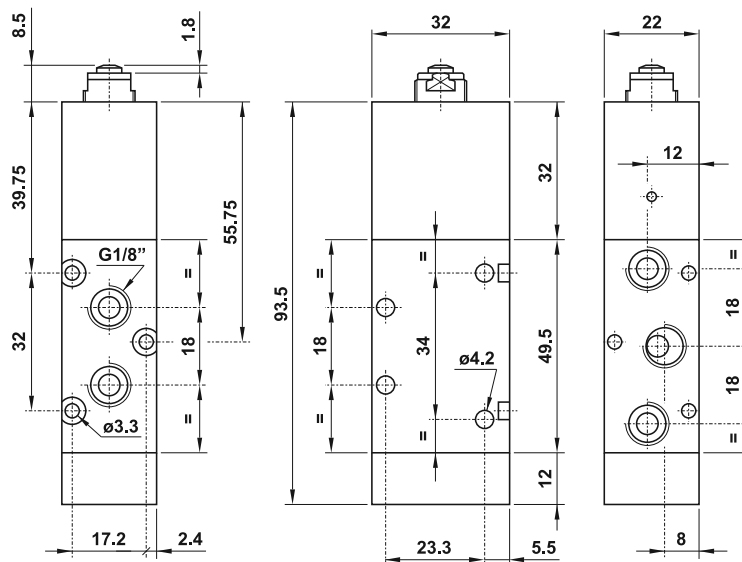
Actuating force related to inlet pressure

P₁: 2.5 bar

P₁: 10 bar

F: 4.5 N

F: 14.2 N



valvole ad azionamento meccanico

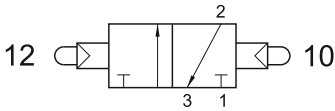
mechanically actuated valves



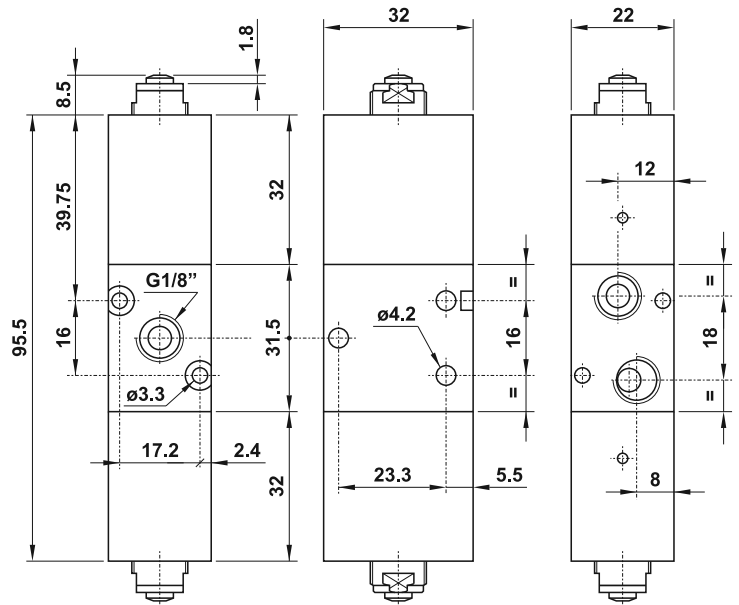
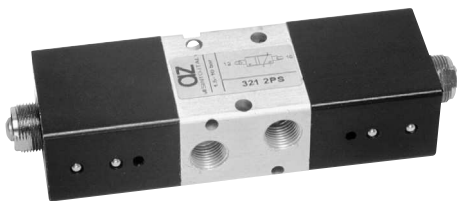
321 2PS

3/2 1/8" doppio pulsante servopilotato

3/2 1/8" double servo-piloted tappet



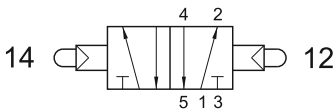
SOLO VERSIONE IN ALLUMINIO
ONLY ALUMINIUM VERSION



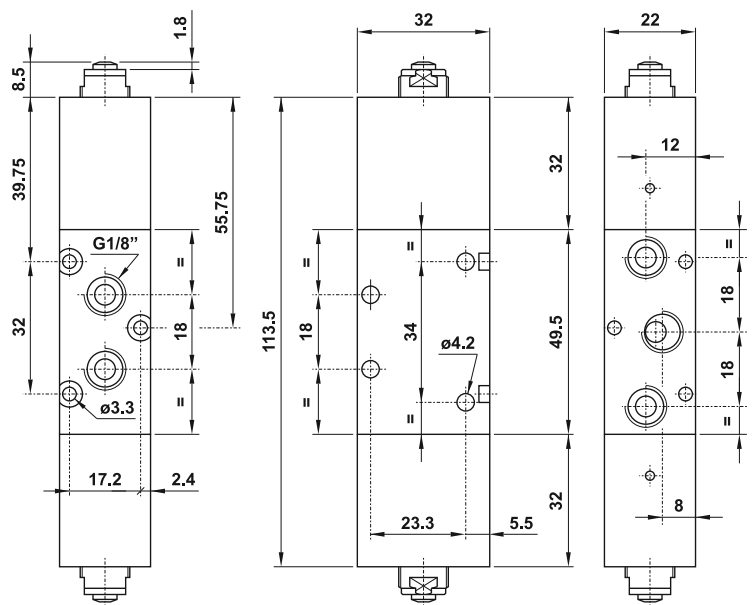
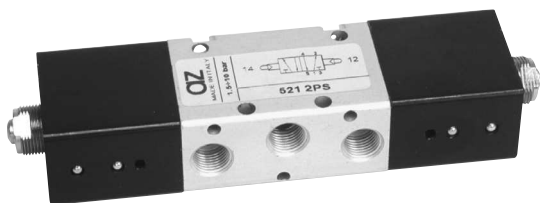
521 2PS

5/2 1/8" doppio pulsante servopilotato

5/2 1/8" double servo-piloted tappet



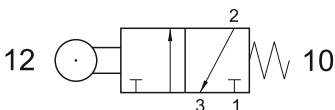
SOLO VERSIONE IN ALLUMINIO
ONLY ALUMINIUM VERSION



321 MR

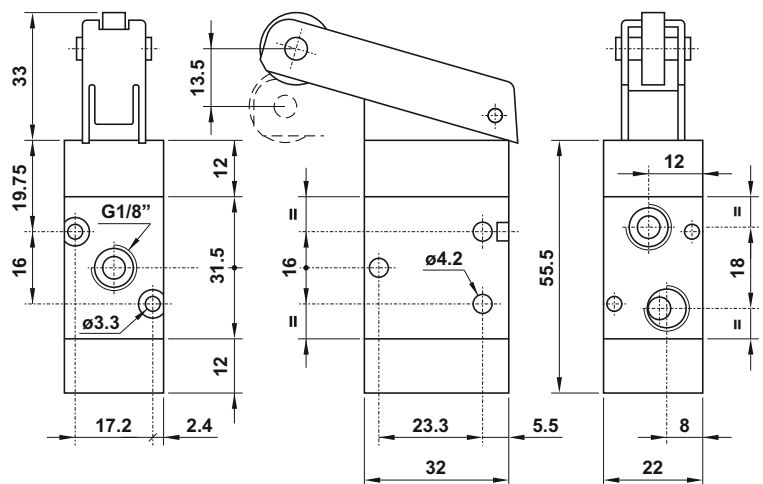
3/2 1/8" leva rullo - ritorno a molla

3/2 1/8" roller lever - spring return



Forza di azionamento: 9.81 N

Actuating force: 9.81 N



valvole ad azionamento meccanico

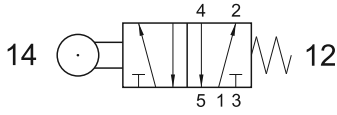
mechanically actuated valves



521 MR

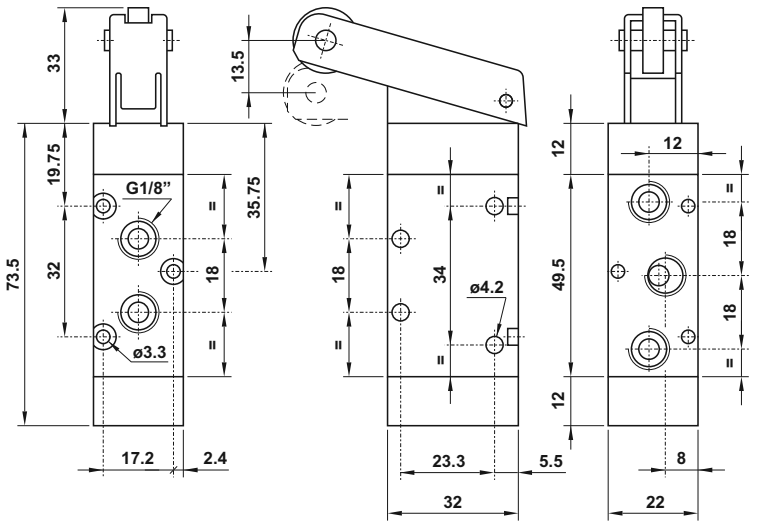
5/2 1/8" leva rullo - ritorno a molla

5/2 1/8" roller lever - spring return



Forza di azionamento: 9.81 N

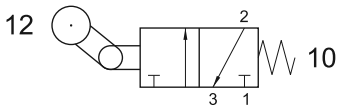
Actuating force: 9.81 N



321 MRU

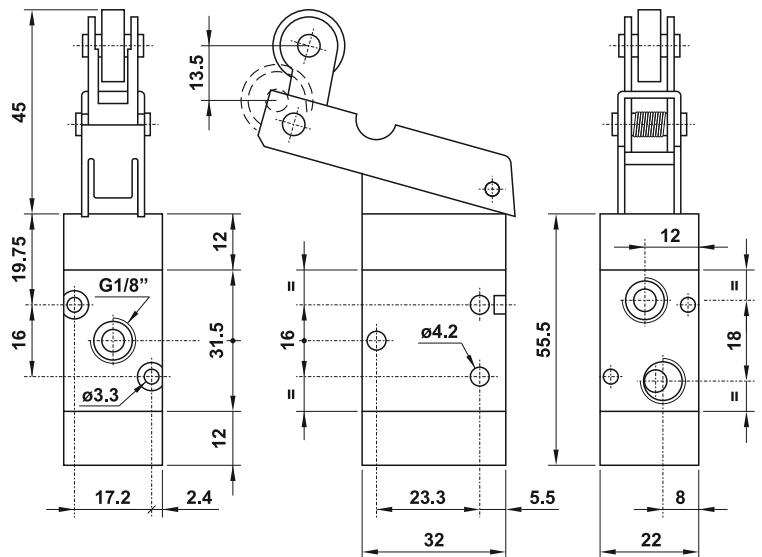
3/2 1/8" leva unidirezionale - ritorno a molla

3/2 1/8" uni-directional lever - spring return



Forza di azionamento: 9.81 N

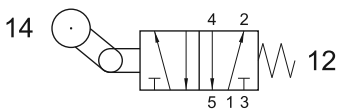
Actuating force: 9.81 N



521 MRU

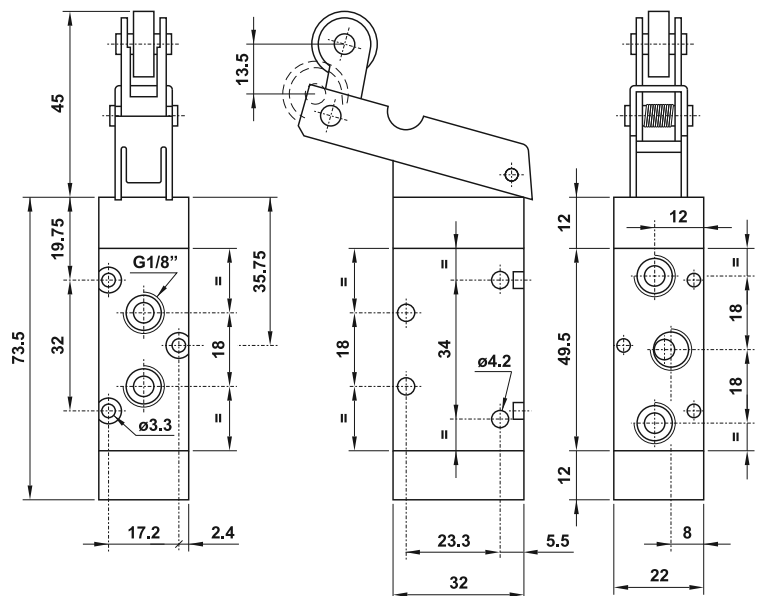
5/2 1/8" leva unidirezionale - ritorno a molla

5/2 1/8" uni-directional lever - spring return



Forza di azionamento: 9.81 N

Actuating force: 9.81 N



valvole ad azionamento meccanico

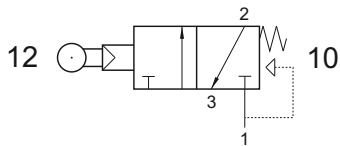
mechanically actuated valves



321 MRS

3/2 1/8" NC leva rullo servopilotata - ritorno a molla

3/2 1/8" NC servo-piloted roller lever - spring return



Forza di azionamento in funzione della pressione di alimentazione

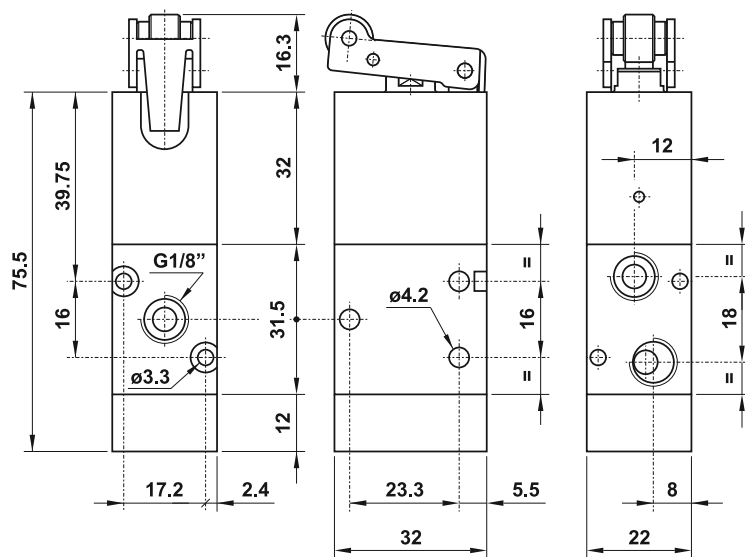
Actuating force related to inlet pressure

P_1 : 2.5 bar

P_1 : 10 bar

F: 3.6 N

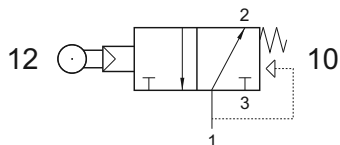
F: 11.4 N



321 MRSA

3/2 1/8" NA leva rullo servopilotata - ritorno a molla

3/2 1/8" NO servo-piloted roller lever - spring return



Forza di azionamento in funzione della pressione di alimentazione

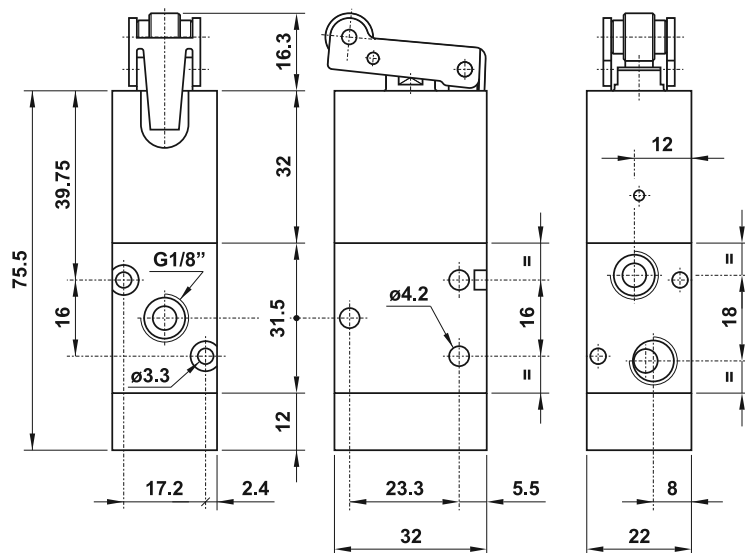
Actuating force related to inlet pressure

P_1 : 2.5 bar

P_1 : 10 bar

F: 3.6 N

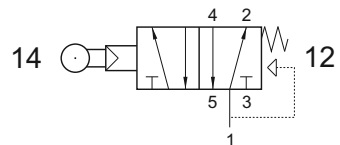
F: 11.4 N



521 MRS

5/2 1/8" leva rullo servopilotata - ritorno a molla

5/2 1/8" servo-piloted roller lever - spring return



Forza di azionamento in funzione della pressione di alimentazione

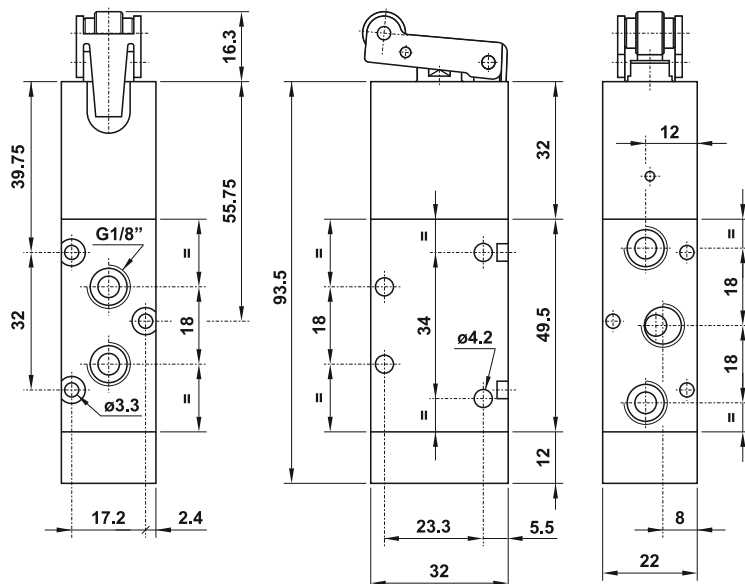
Actuating force related to inlet pressure

P_1 : 2.5 bar

P_1 : 10 bar

F: 3.6 N

F: 11.4 N



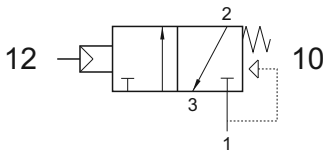
valvole ad azionamento meccanico

mechanically actuated valves



321 MN

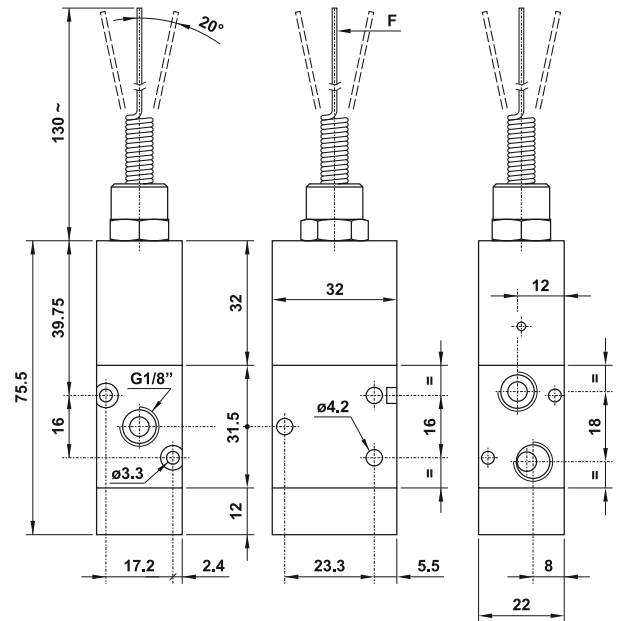
3/2 1/8" NC antenna servopilotata - ritorno a molla
3/2 1/8" NC servo-piloted whisker - spring return



Forza di azionamento in funzione della pressione di alimentazione

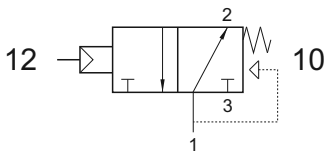
Actuating force related to inlet pressure

P_1 : 2.5 bar P_1 : 10 bar
 F : 0.3 N F : 0.8 N



321 MNA

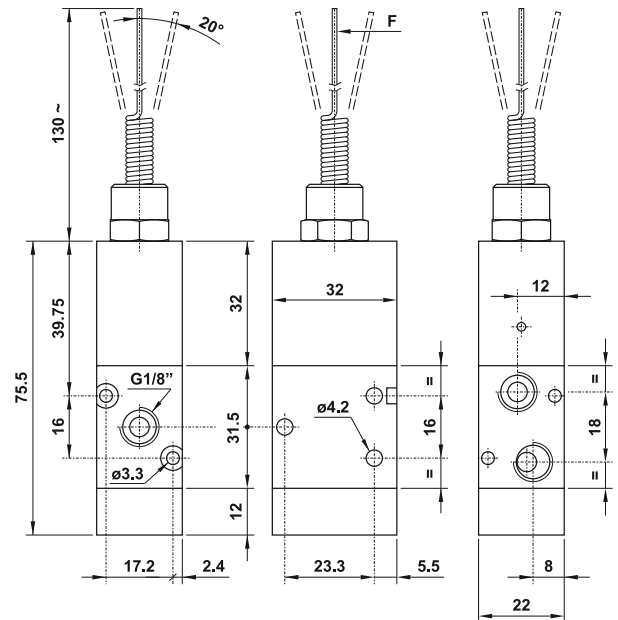
3/2 1/8" NA antenna servopilotata - ritorno a molla
3/2 1/8" NO servo-piloted whisker - spring return



Forza di azionamento in funzione della pressione di alimentazione

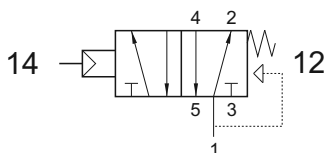
Actuating force related to inlet pressure

P_1 : 2.5 bar P_1 : 10 bar
 F : 0.3 N F : 0.8 N



521 MN

5/2 1/8" antenna servopilotata - ritorno a molla
5/2 1/8" servo-piloted whisker - spring return



Forza di azionamento in funzione della pressione di alimentazione

Actuating force related to inlet pressure

P_1 : 2.5 bar P_1 : 10 bar
 F : 0.3 N F : 0.8 N

