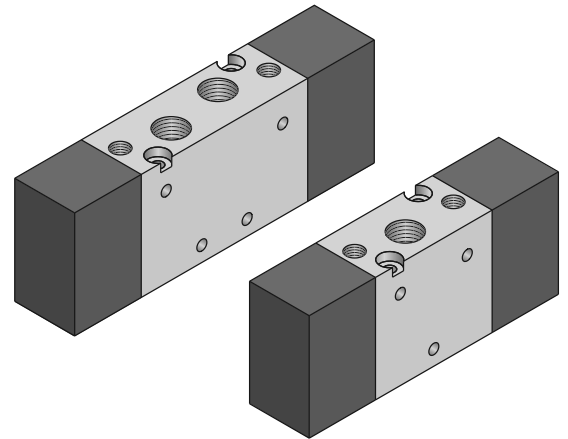


valvole 18 mm ad azionamento pneumatico

pneumatically piloted valves - 18 mm



- Valvole a spola 3/2-5/2-5/3 con attacchi filettati G1/8"
3/2-5/2-5/3 spool valves with G1/8" threaded ports
- Spessore della valvola: 18 mm
Valve thickness: 18 mm
- Montaggio in linea, su basi modulari o a posti fissi (pag. 160-165)
Installation in-line, on multiple sub-bases or manifolds (refer to pages 160-165)
- Azionamento pneumatico monostabile o bistabile
Mono-stable or bi-stable pneumatic pilot



Tempi di risposta - response times

monostabile <i>mono-stable</i>	TRA (14): 12 ms TRR (12): 24 ms
bistabile <i>bi-stable</i>	TRA (14): 21 ms TRR (12): 21 ms

Materiali

Corpo: alluminio 11S
Molle: INOX
Guarnizioni: NBR
Spola: alluminio nichelato
Parti interne: ottone OT58

Materials

Body: aluminium 11S
Springs: stainless steel
Seals: NBR
Spool: nickel plated aluminium
Internal parts: brass OT58

Diametro nominale <i>Nominal orifice</i>	4.5 mm	
Portata nominale a 6 bar, Δp 1 bar <i>Nominal flow rate at 6 bar, Δp 1 bar</i>	500 NI/min	
Temperatura di esercizio <i>Temperature range</i>	max +60°C	
Pressione di esercizio <i>Working pressure</i>	monostabile <i>[mono-stable]</i>	bistabile <i>[bi-stable]</i>
	2.5 ... 10 bar 0.25 ... 1 MPa	-0.9 ... 10 bar -0.09 ... 1 MPa
Pressione di azionamento <i>Actuating pressure</i>	monostabile <i>[mono-stable]</i>	bistabile <i>[bi-stable]</i>
	3 ... 10 bar 0.3 ... 1 MPa	2 ... 10 bar 0.2 ... 1 MPa
Fluido <i>Fluid</i>	Aria filtrata 50 μ con o senza lubrificazione <i>50μ filtered, lubricated or non lubricated air</i>	

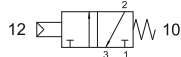
valvole 18 mm ad azionamento pneumatico

pneumatically piloted valves - 18 mm



731 MC

normalmente chiusa
normally closed



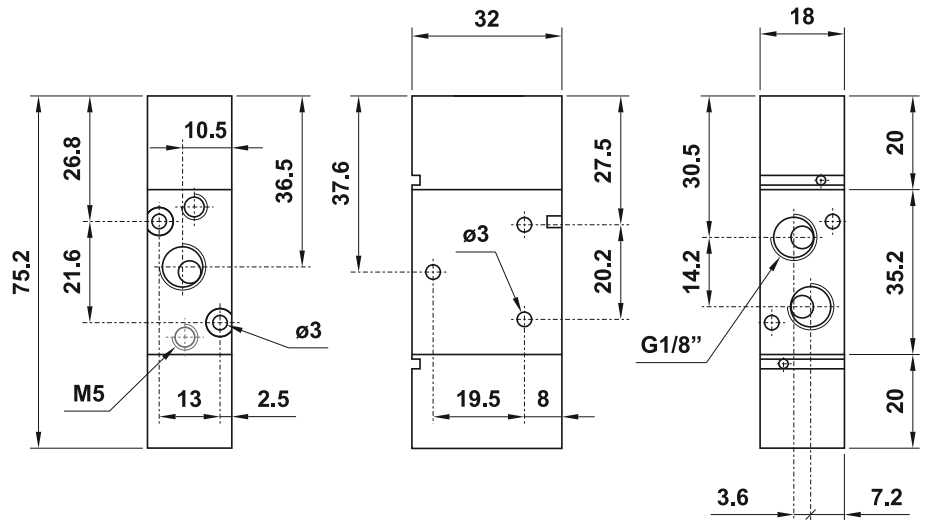
731 MCA

normalmente aperta
normally open



3/2 1/8" comando pneumatico - ritorno a molla

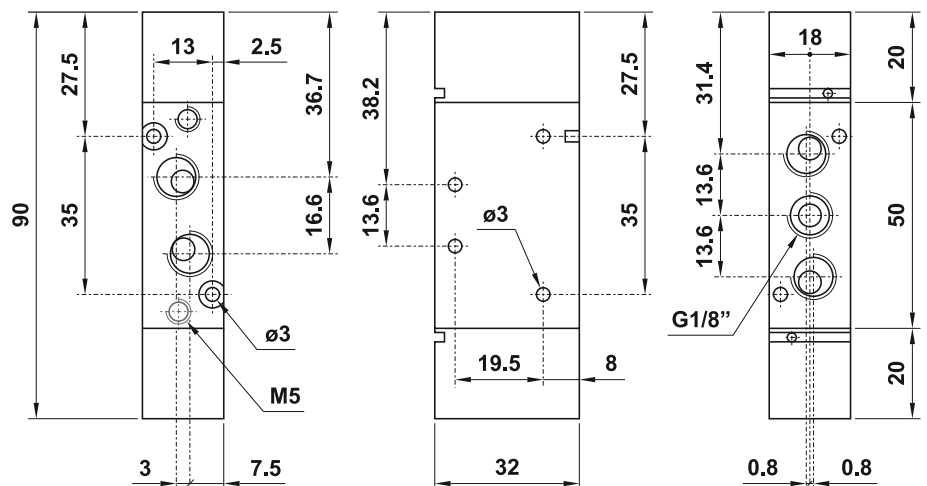
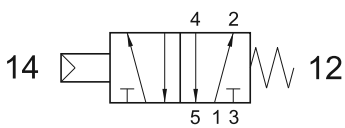
3/2 1/8" pneumatic pilot - spring return



751 MC

5/2 1/8" comando pneumatico - ritorno a molla

5/2 1/8" pneumatic pilot - spring return



valvole 18 mm ad azionamento pneumatico

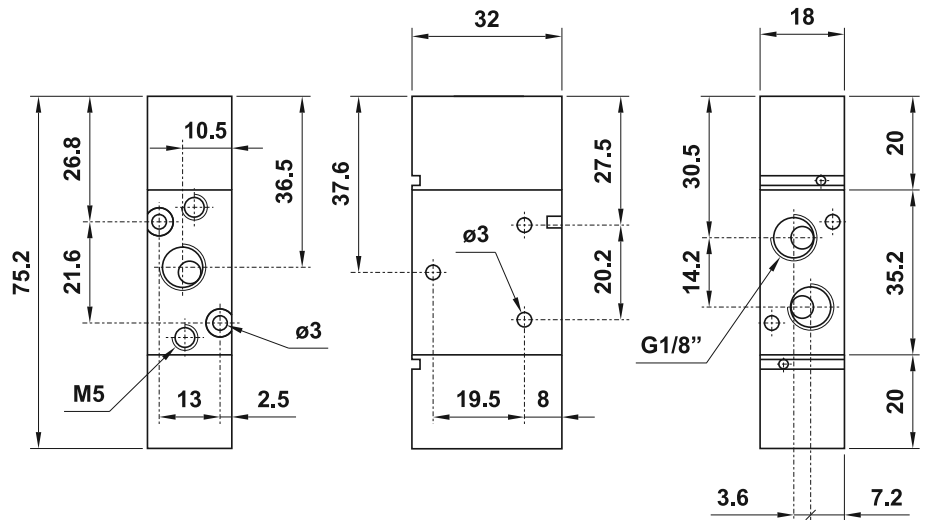
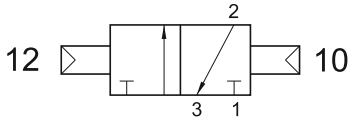
pneumatically piloted valves - 18 mm



731 CC

3/2 1/8" doppio comando pneumatico

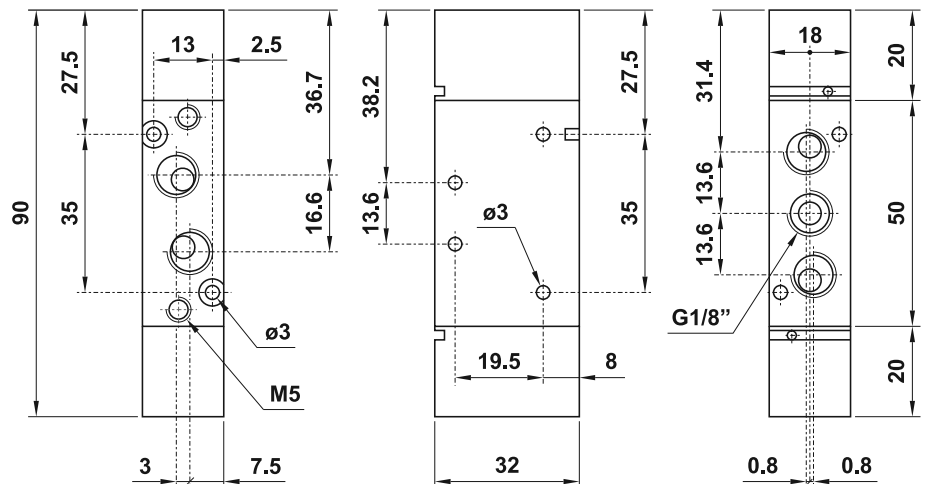
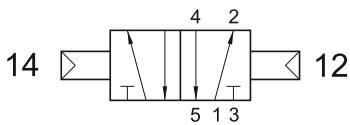
3/2 1/8" double pneumatic pilot



751 CC

5/2 1/8" doppio comando pneumatico

5/2 1/8" double pneumatic pilot



valvole 18 mm ad azionamento pneumatico

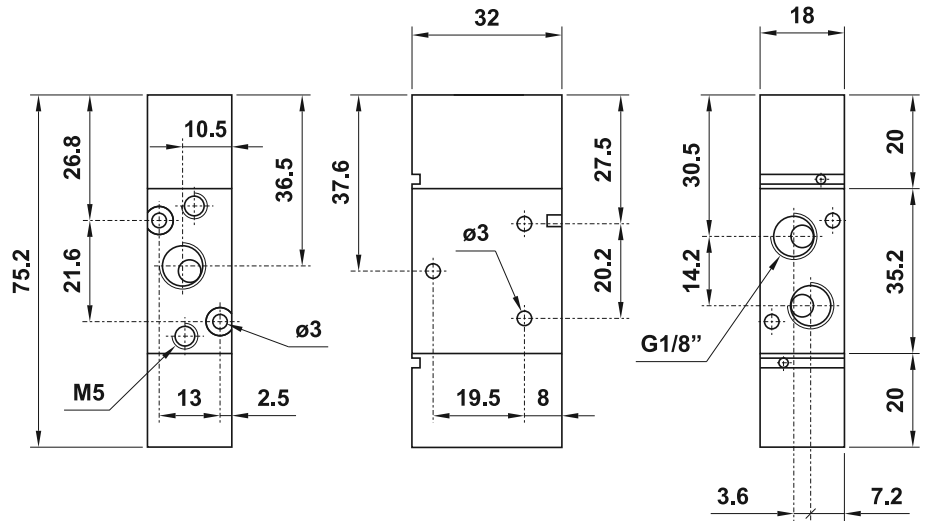
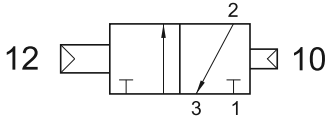
pneumatically piloted valves - 18 mm



731 CCD

3/2 1/8" doppio comando pneumatico - con differenziale

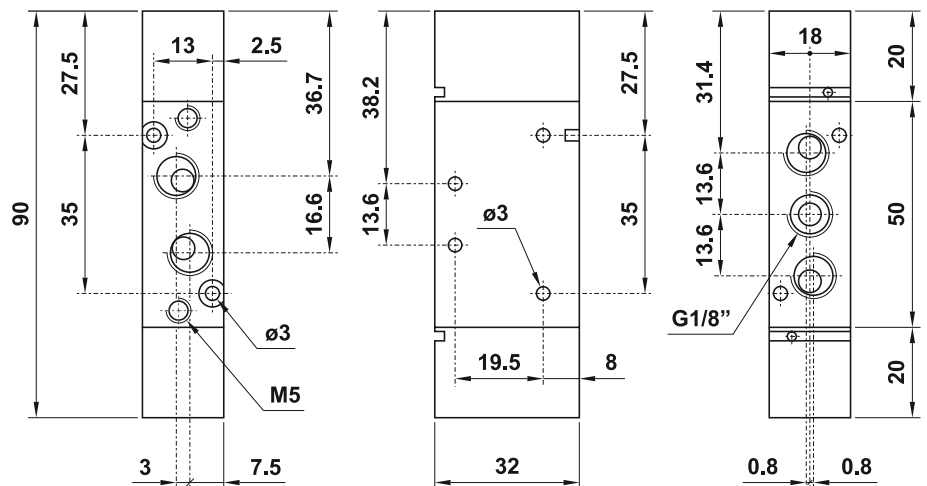
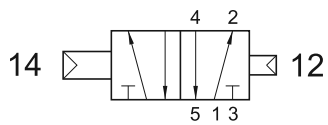
3/2 1/8" double pneumatic pilot - with differential



751 CCD

5/2 1/8" doppio comando pneumatico - con differenziale

5/2 1/8" double pneumatic pilot - with differential



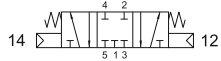
valvole 18 mm ad azionamento pneumatico

pneumatically piloted valves - 18 mm



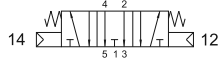
7513C CC

centri chiusi
closed centres



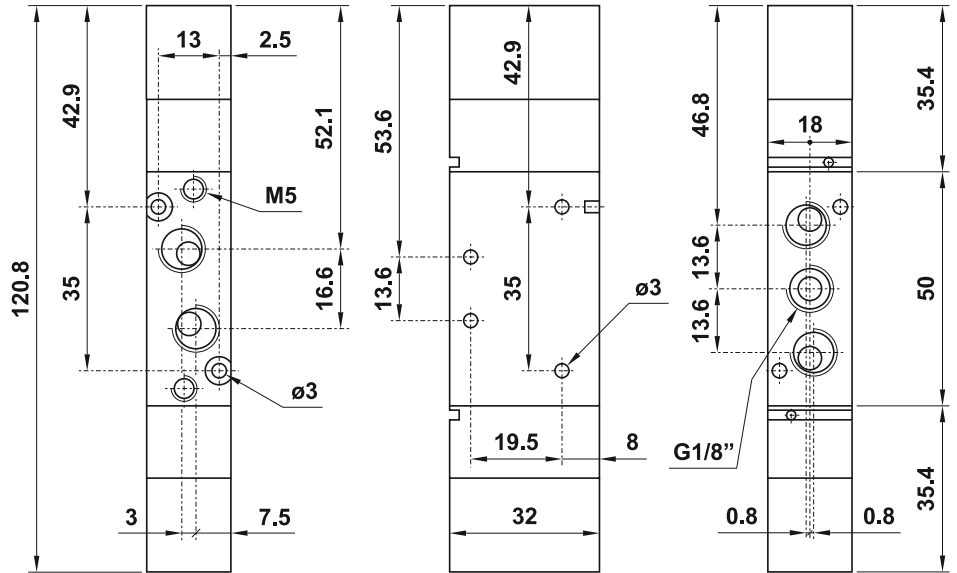
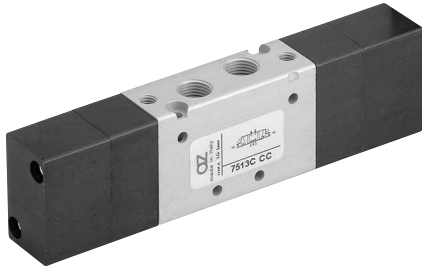
7513A CC

centri aperti
open centres



5/3 1/8" doppio comando pneumatico

5/3 1/8" double pneumatic pilot



1