

# valvole G1/2" azionamento elettropneumatico

*solenoid actuated valves - G1/2"*



## Multifunzionalità e adattabilità della valvola

La funzione della valvola può essere variata in ogni momento secondo necessità cambiando la posizione dei tappi da M5 e G1/8" collocati nel corpo secondo gli schemi sottoriportati.

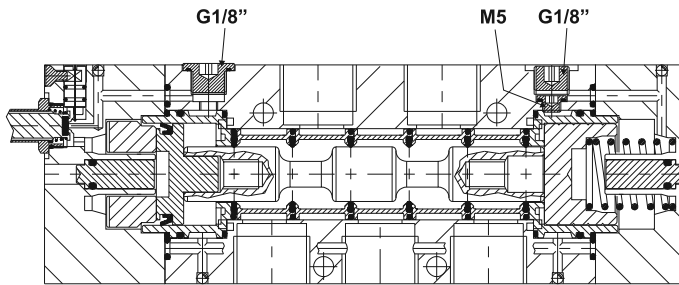
La valvola è fornita nella configurazione richiesta al momento dell'ordine. Eventuali tappi aggiuntivi possono essere ordinati separatamente.

## Multifunction feature of the valve

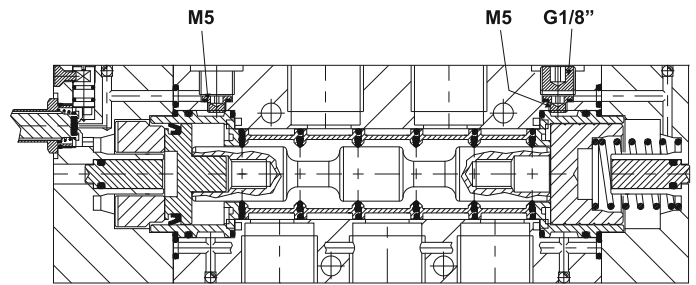
*The function of the valve can be changed in any moment. To do this it is enough to change the position of the plugs M5 and G1/8", which are inserted into the body according to the scheme.*

*The valve is supplied in the configuration specified on the order. More plugs can be ordered separately.*

**324 ME  
524 ME**

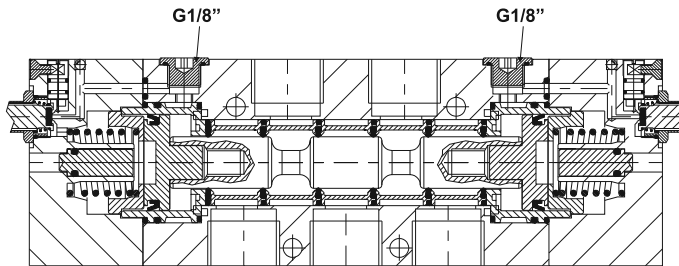


**324 ME AS  
524 ME AS**



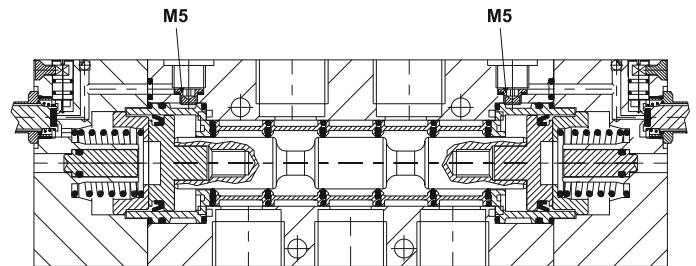
**324 EE  
524 EE**

**5243C EE  
5243A EE  
5243P EE**



**324 EE AS  
524 EE AS**

**5243C EE AS  
5243A EE AS  
5243P EE AS**



# valvole G1/2" azionamento elettropneumatico

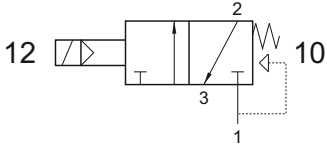
solenoid actuated valves - G1/2"



## 324 ME

3/2 1/2" NC comando elettrico - ritorno a molla

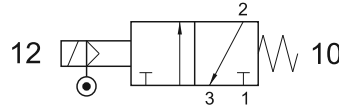
3/2 1/2" NC solenoid pilot - spring return



## 324 ME AS

3/2 1/2" comando elettrico alimentazione separata - ritorno a molla

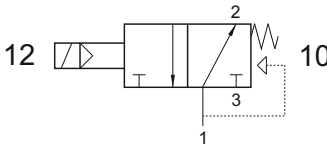
3/2 1/2" solenoid pilot with separate air supply - spring return



## 324 MEA

3/2 1/2" NA comando elettrico - ritorno a molla

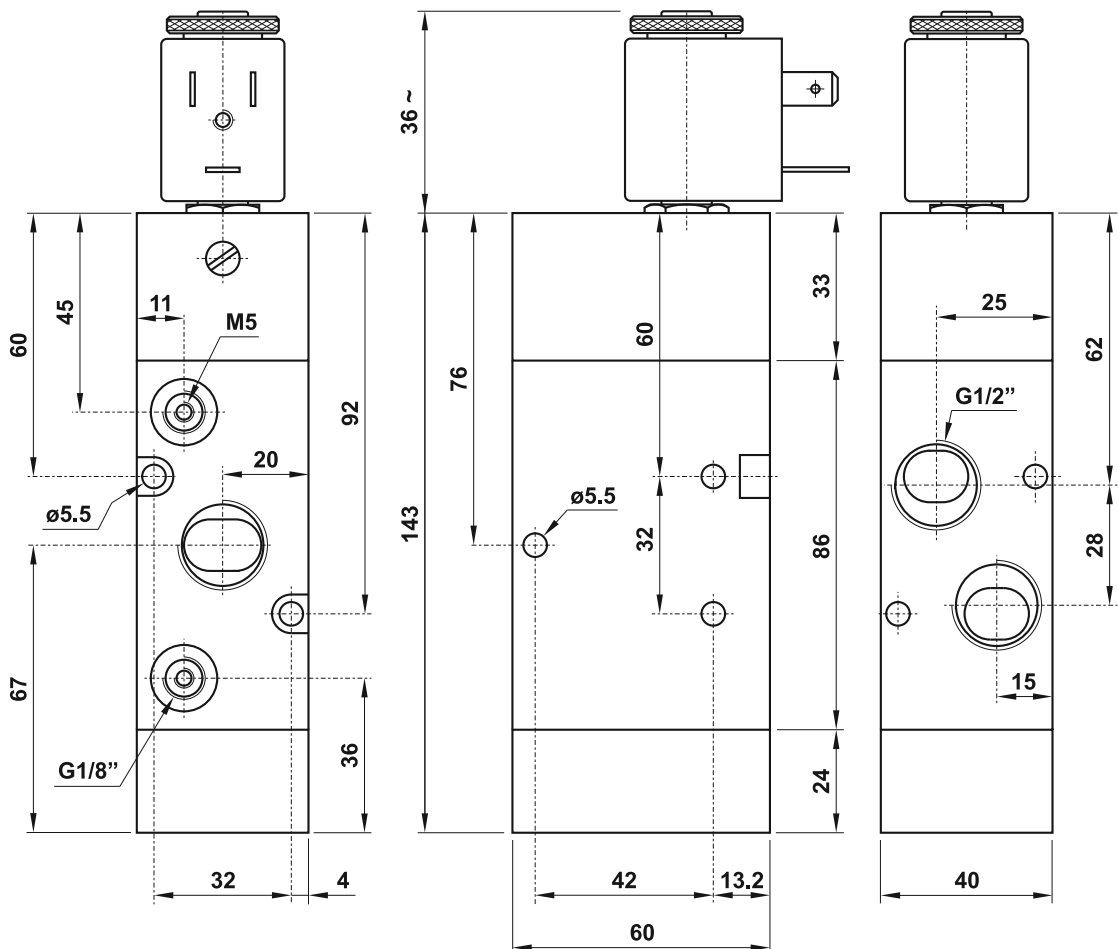
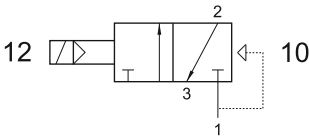
3/2 1/2" NO solenoid pilot - spring return



## 324 EFP

3/2 1/2" NC comando elettrico - ritorno a molla pneumatica

3/2 1/2" NC solenoid pilot - pneumatic spring return





# valvole G1/2" azionamento elettropneumatico

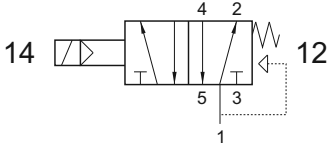
*solenoid actuated valves - G1/2"*



## 524 ME

5/2 1/2" comando elettrico - ritorno a molla

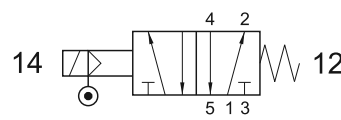
*5/2 1/2" solenoid pilot - spring return*



## 524 ME AS

5/2 1/2" comando elettrico alimentazione separata - ritorno a molla

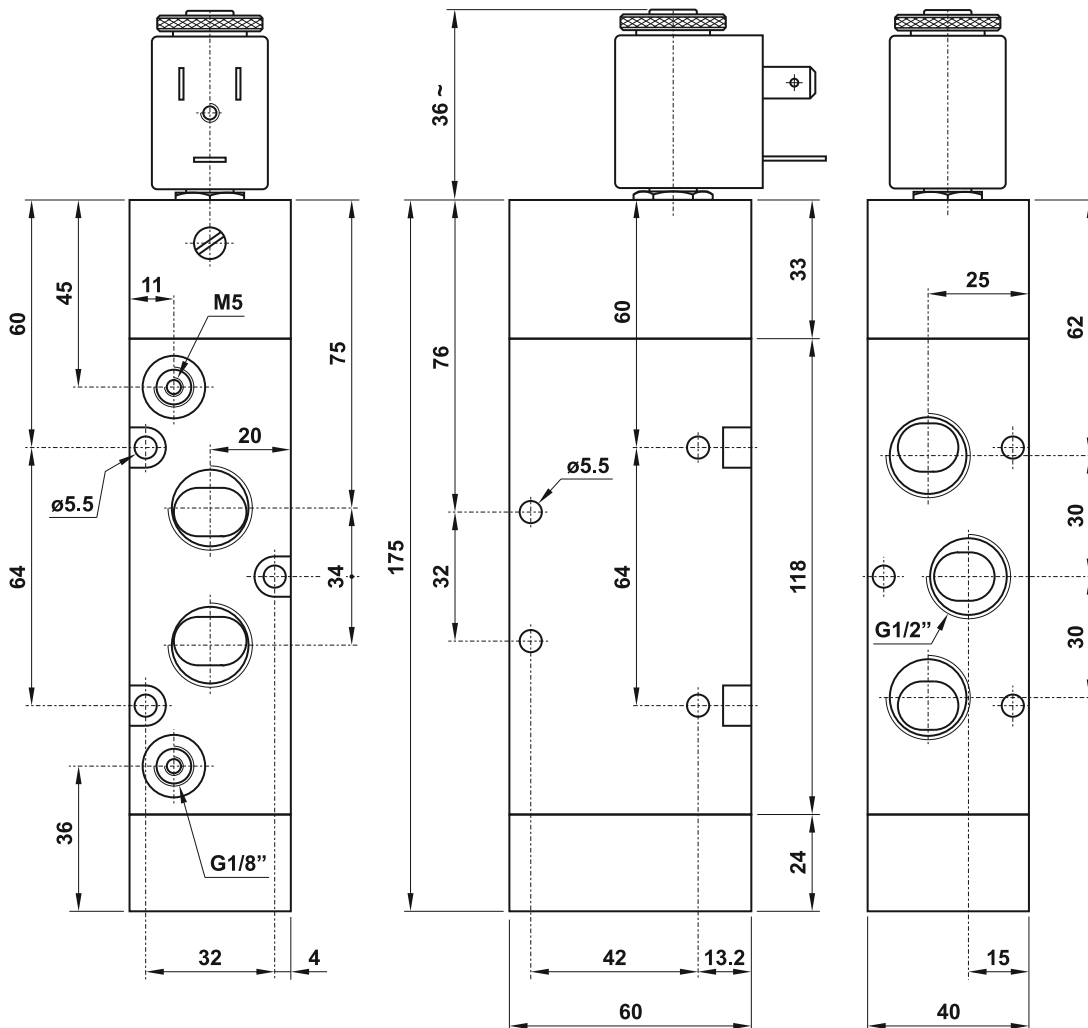
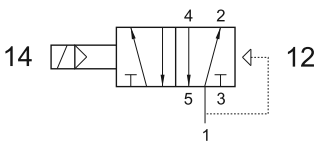
*5/2 1/2" solenoid pilot with separate air supply - spring return*



## 524 EFP

5/2 1/2" comando elettrico - ritorno a molla pneumatica

*5/2 1/2" solenoid pilot - pneumatic spring return*



# valvole G1/2" azionamento elettropneumatico

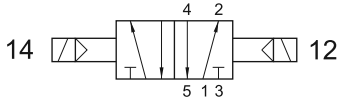
*solenoid actuated valves - G1/2"*



## 524 EE

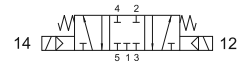
5/2 1/2" doppio comando elettrico

*5/2 1/2" double solenoid pilot*



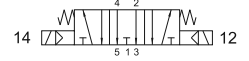
## 5243C EE

centri chiusi  
*closed centres*



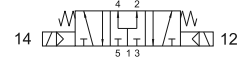
## 5243A EE

centri aperti  
*open centres*



## 5243P EE

centri in pressione  
*pressurized centres*



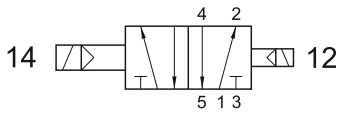
5/3 1/2" doppio comando elettrico

*5/3 1/2" double solenoid pilot*

## 524 EED

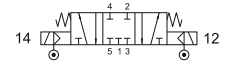
5/2 1/2" doppio comando elettrico - con differenziale

*5/2 1/2" double solenoid pilot - with differential*



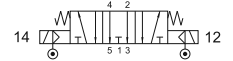
## 5243C EE AS

centri chiusi  
*closed centres*



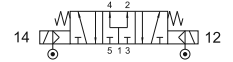
## 5243A EE AS

centri aperti  
*open centres*



## 5243P EE AS

centri in pressione  
*pressurized centres*



5/3 1/2" doppio comando elettrico alimentazione separata

*5/3 1/2" double solenoid pilot with separate air supply*

## 524 EE AS

5/2 1/2" doppio comando elettrico alimentazione separata

*5/2 1/2" double solenoid pilot with separate air supply*

