

sottobasi modulari per valvole 18 mm

multiple sub-bases for 18 mm spool valves



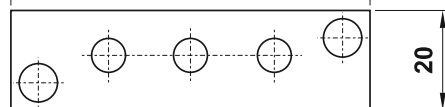
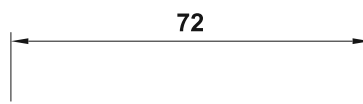
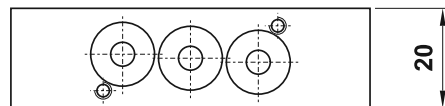
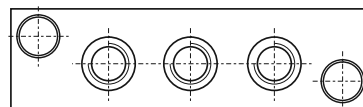
sottobase sub-base

CODICE DI ORDINAZIONE
ORDER CODE

BM751



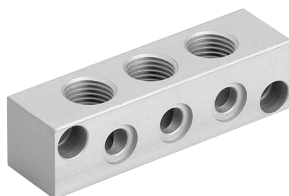
È venduta in kit con i particolari necessari al suo assemblaggio.
It is sold in kit with all necessary pieces for installation.



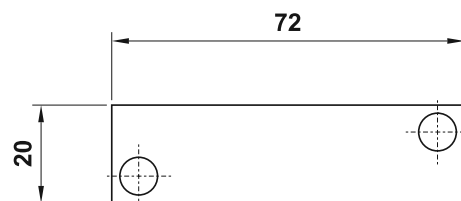
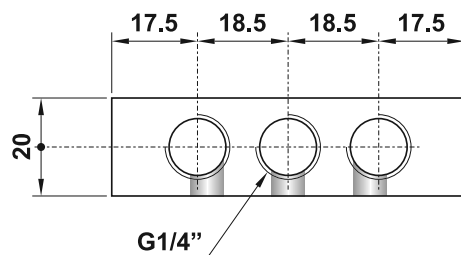
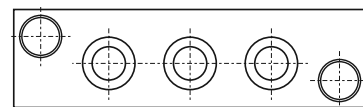
intermedio intermediate header

CODICE DI ORDINAZIONE
ORDER CODE

DR751



È venduto in kit con i particolari necessari al suo assemblaggio.
It is sold in kit with all necessary pieces for installation.



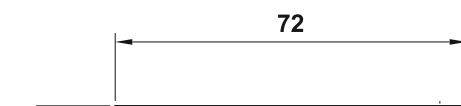
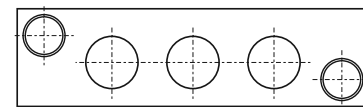
diaframma blanking piece

CODICE DI ORDINAZIONE
ORDER CODE

DC751



È venduto in kit con i particolari necessari al suo assemblaggio.
It is sold in kit with all necessary pieces for installation.



sottobasi modulari per valvole 18 mm

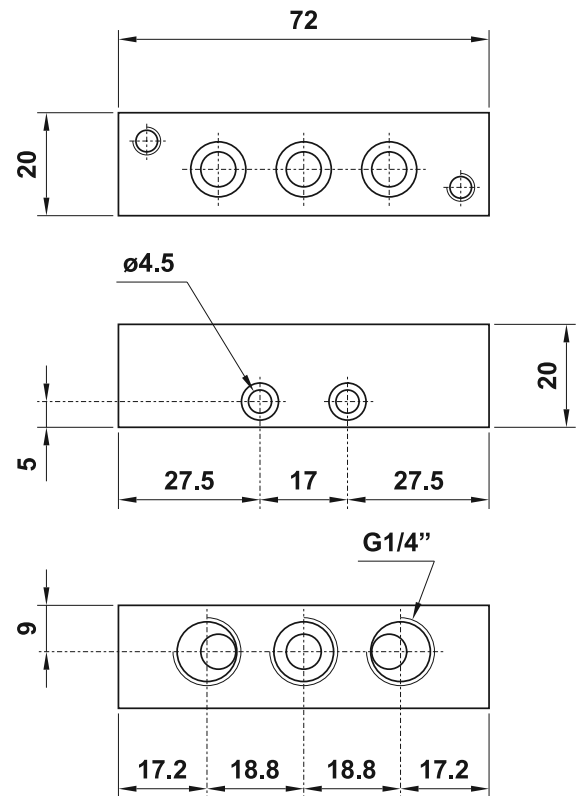
multiple sub-bases for 18 mm spool valves



terminale sinistro left hand header

CODICE DI ORDINAZIONE
ORDER CODE

TS751

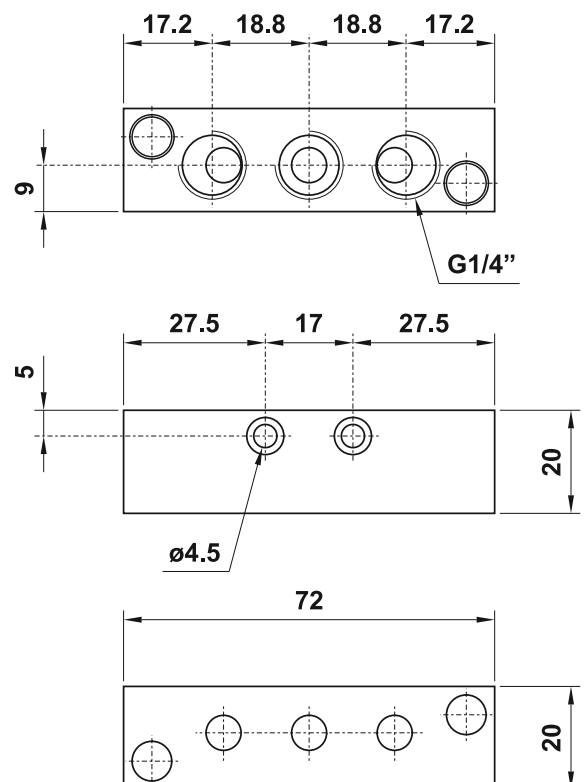


È venduto in kit con i particolari necessari al suo assemblaggio.
It is sold in kit with all necessary pieces for installation.

terminale destro right hand header

CODICE DI ORDINAZIONE
ORDER CODE

TD751



È venduto in kit con i particolari necessari al suo assemblaggio.
It is sold in kit with all necessary pieces for installation.

sottobasi modulari per valvole 18 mm

multiple sub-bases for 18 mm spool valves

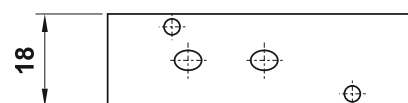
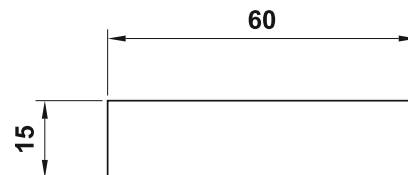
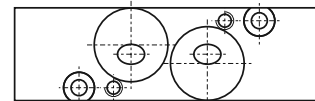
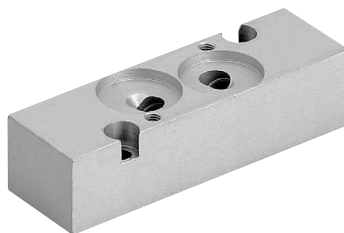


adattatore 3-5 vie

3-5 way adaptor

CODICE DI ORDINAZIONE
ORDER CODE

DD751



Per montare una valvola a 3 vie su una base per valvole a 5 vie è necessario interporre questo adattatore tra la base e la valvola.

To install a three way valve on a sub-base for five way valves it is necessary to mount this adaptor between the valve and the sub-base.

È venduto in kit con i particolari necessari al suo assemblaggio.
It is sold in kit with all necessary pieces for installation.

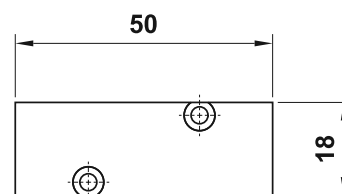
piastrina di chiusura

blanking plate

CODICE DI ORDINAZIONE
ORDER CODE

CS731

3 vie
ways



È venduta in kit con i particolari necessari al suo assemblaggio.
It is sold in kit with all necessary pieces for installation.

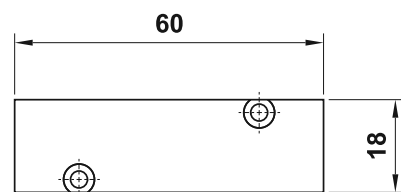
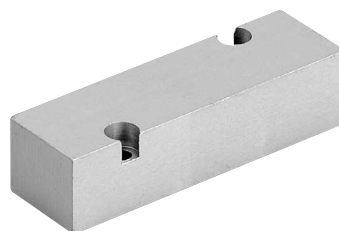
piastrina di chiusura

blanking plate

CODICE DI ORDINAZIONE
ORDER CODE

CS751

5 vie
ways



È venduta in kit con i particolari necessari al suo assemblaggio.
It is sold in kit with all necessary pieces for installation.