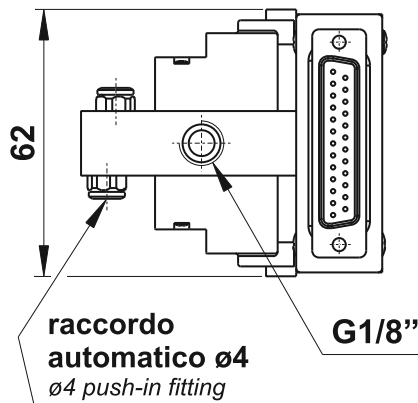


elettropiloti 10 mm su base multiconnessione

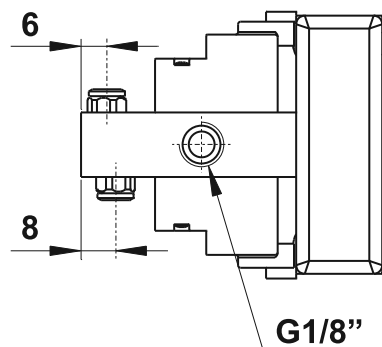
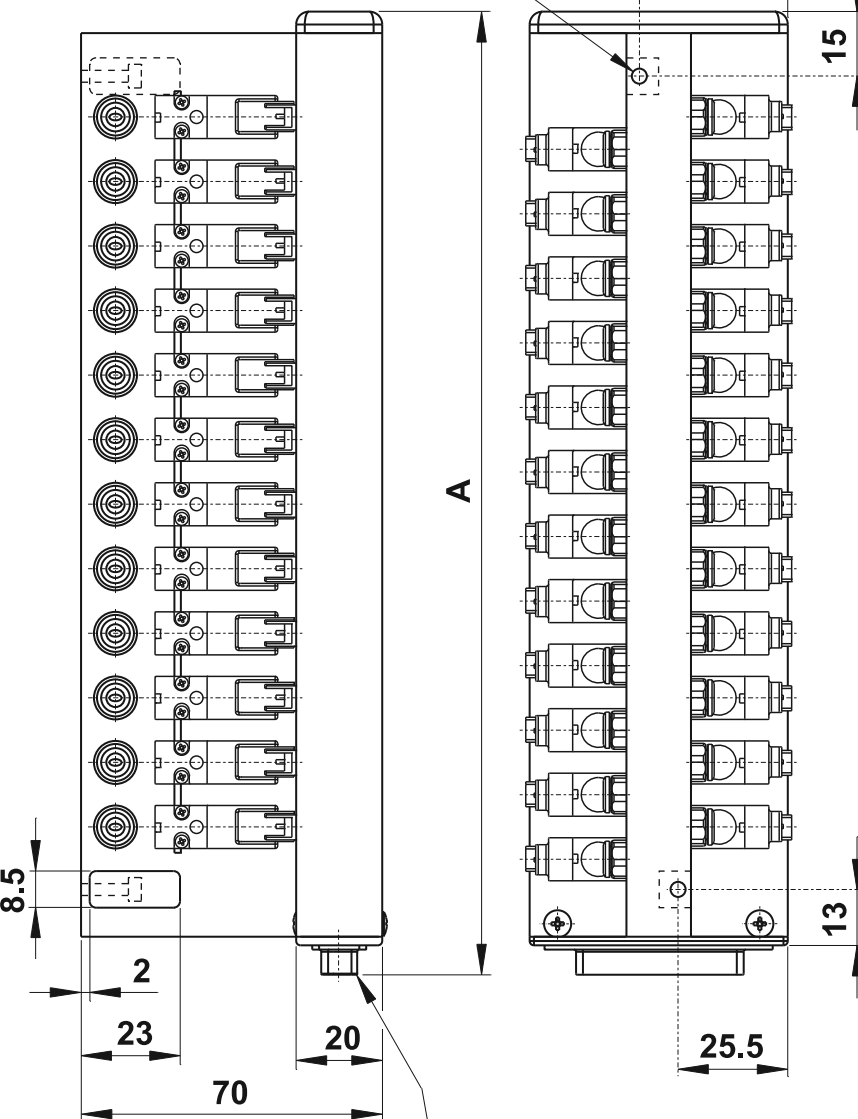
10 mm solenoid valves on manifold with multiconnection D-SUB



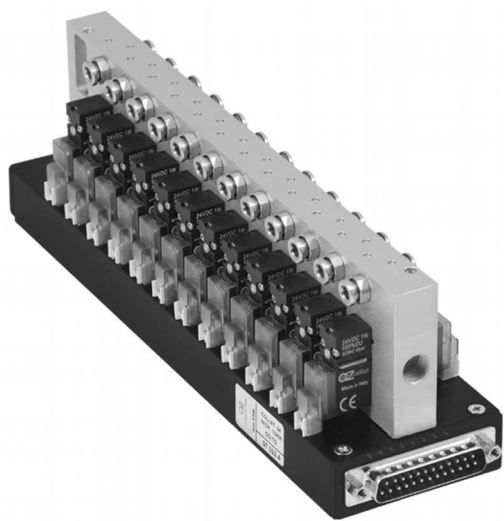
- Ingresso aria da entrambi i lati
Air inlet from both sides
- Uscite con raccordo automatico per tubo $\varnothing 4$
Exits with $\varnothing 4$ push-in fittings
- Montaggio a pannello mediante due viti M3 nella parte superiore
Panel mounting possible with two M3 screws on the top side
- Elettropiloti 3/2
3/2 solenoid valves
- Protezione elettrica IP40
Electrical protection IP40
- Connettore D-SUB (DB-25) a 25 poli
Connector D-SUB (DB-25) with 25 pins
- Base e struttura in alluminio
Manifold and structure in aluminium



n. 2 fori $\varnothing 3.5$
per fissaggio a pannello
n. 2 holes $\varnothing 3.5$
for panel mounting



connettore D-SUB (DB-25)
D-SUB connector (DB-25)



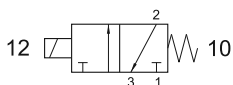
modello model	nr. posiz. no. stations	A
07.012.4	4	67
07.013.4	6	82
07.014.4	8	97
07.015.4	10	112
07.016.4	12	127
07.017.4	14	142
07.018.4	16	157
07.019.4	18	172
07.020.4	20	187
07.021.4	22	202
07.022.4	24	217

elettropiloti 10 mm su base multiconnessione

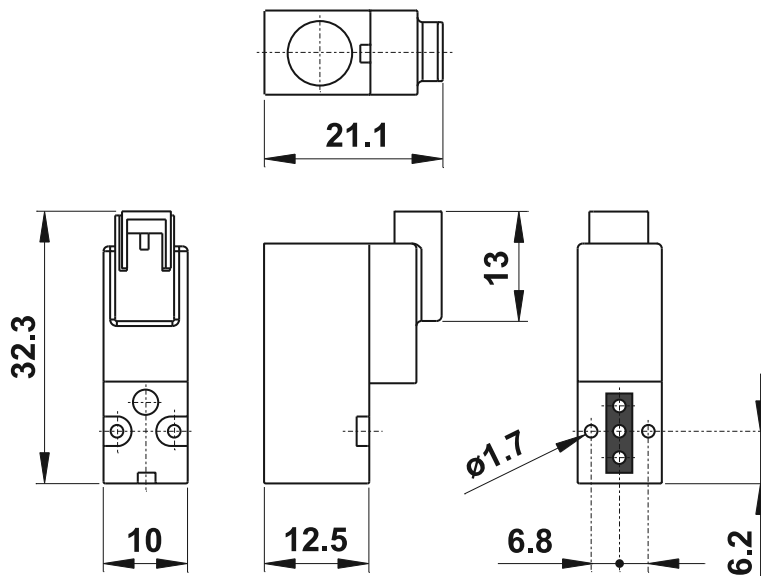
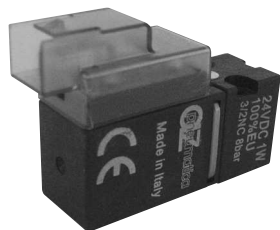
10 mm solenoid valves on manifold with multiconnection D-SUB



Elettropilota
Solenoid valve **10 mm**



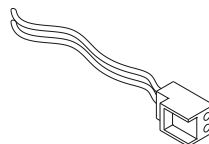
00.441.0



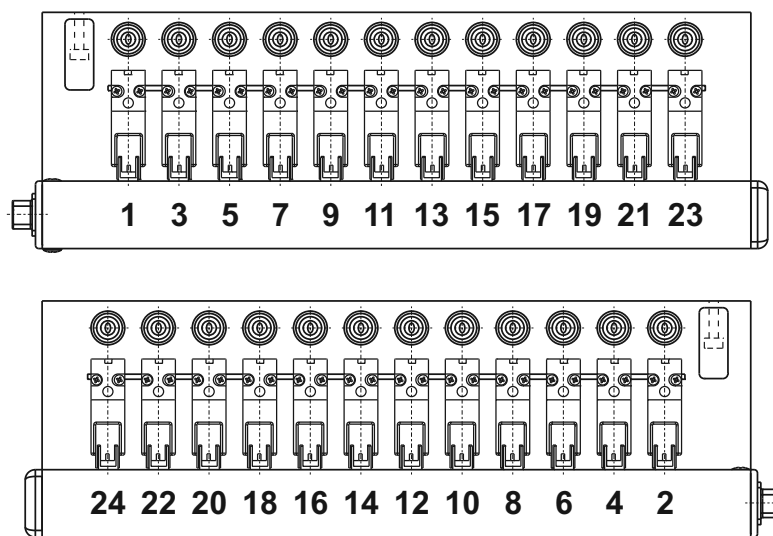
Attenzione: momento massimo di serraggio delle viti di fissaggio degli elettropiloti sulla base: 0.25 Nm
Attention: maximum torque for mounting screws of the solenoid valves: 0.25 Nm

ACCESSORI - ACCESSORIES

07.049.0 Connettore per elettropilota 10 mm con cavetto rosso/nero, lunghezza 400 mm
Connector for 10 mm solenoid with cable red/black, length 400 mm



numerazione elettropiloti
valves numbering

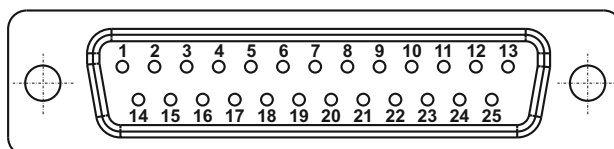


Tensione <i>Tension</i>	24V DC ±10%
Potenza <i>Power</i>	0.5 ... 1 W
Portata nominale a 6 bar, Δp 1 bar <i>Nominal flow rate at 6 bar, Δp 1 bar</i>	15 NI/min
Temperatura di esercizio <i>Temperature range</i>	-5°C ... +60°C
Pressione di esercizio <i>Working pressure</i>	0 ... 7 bar 0 ... 0.7 MPa
Fluido <i>Fluid</i>	Aria filtrata 5μ con o senza lubrificazione 5μ filtered, lubricated or non lubricated air

connettore D-SUB (DB-25)
connector D-SUB (DB-25)

1-24 segnali per elettropiloti
signals for solenoid valves

25 comune (-)
common (-)



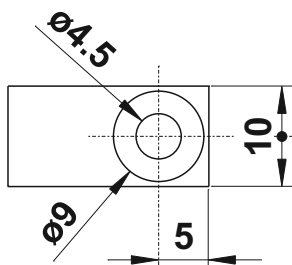
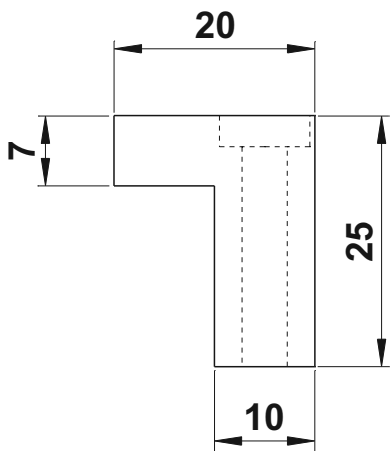
elettropiloti 10 mm su base multiconnessione

10 mm solenoid valves on manifold with multiconnection D-SUB



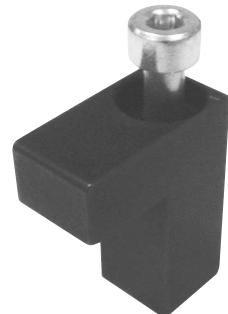
staffa per fissaggio base

mounting bracket



CODICE DI ORDINAZIONE
ORDER CODE

07.051.2



Utilizzabile per fissare la base su un piano. Il codice di ordinazione si riferisce a una coppia di staffe, venduta in kit con le viti necessarie per l'assemblaggio.

It can be used to mount the base on a plate. The order code is referred to a couple of brackets, which are sold in kit with the assembling screws.

