

Line

250 ø32:100mm

Cilindri ISO 15552 (ISO 6431) Cylinders ISO 15552 (ISO 6431)



Dati Tecnici - Technical data

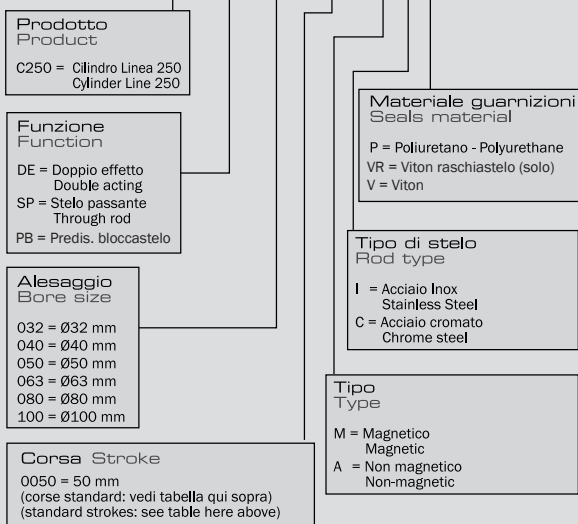
Fluido - Fluid	Aria filtrata con o senza lubrificazione - Filtered air with or without lubrication										
Temperatura d'esercizio - Working temperature	0°C (-20° C con aria secca)+70°C - 0°C (-20° C with dry air)+70° C										
Pressione massima d'esercizio - Max. working pressure	max. 10 Bar (max. 1,00 MPa)										
Lubrificazione - Lubrication	se si utilizza aria lubrificata, la lubrificazione deve essere continua in case of lubricated air, the lubrication should never be interrupted										
Materiali - Materials	<table border="0"> <tr> <td>Camicia: alluminio anodizzato</td> <td>Barrel: anodized aluminium</td> </tr> <tr> <td>Stelo: acciaio Inox AISI 303/Acciaio cromato</td> <td>Piston rod: AISI 303 stainless steel/Chromed steel</td> </tr> <tr> <td>Testate: tecnopolimero termoplastico</td> <td>Heads: technopolymer</td> </tr> <tr> <td>Pistone: resina acetilica</td> <td>Piston: acetalic resin</td> </tr> <tr> <td>Connessioni filettate: inserto in ottone</td> <td>Threaded connections: brass insert</td> </tr> </table>	Camicia: alluminio anodizzato	Barrel: anodized aluminium	Stelo: acciaio Inox AISI 303/Acciaio cromato	Piston rod: AISI 303 stainless steel/Chromed steel	Testate: tecnopolimero termoplastico	Heads: technopolymer	Pistone: resina acetilica	Piston: acetalic resin	Connessioni filettate: inserto in ottone	Threaded connections: brass insert
Camicia: alluminio anodizzato	Barrel: anodized aluminium										
Stelo: acciaio Inox AISI 303/Acciaio cromato	Piston rod: AISI 303 stainless steel/Chromed steel										
Testate: tecnopolimero termoplastico	Heads: technopolymer										
Pistone: resina acetilica	Piston: acetalic resin										
Connessioni filettate: inserto in ottone	Threaded connections: brass insert										

Corse standard - Standard strokes (mm)

Alesaggio - Bore size	25	50	80	100	125	160	200	250	300	320	350	400	450	500	600	700	800	900	1000	
32	▲	▲	▲	▲	▲	▲	▲	▲	▲	▲	▲	▲	▲	▲	▲	▲	▲	▲	▲	▲
40	▲	▲	▲	▲	▲	▲	▲	▲	▲	▲	▲	▲	▲	▲	▲	▲	▲	▲	▲	▲
50	▲	▲	▲	▲	▲	▲	▲	▲	▲	▲	▲	▲	▲	▲	▲	▲	▲	▲	▲	▲
63	▲	▲	▲	▲	▲	▲	▲	▲	▲	▲	▲	▲	▲	▲	▲	▲	▲	▲	▲	▲
80	▲	▲	▲	▲	▲	▲	▲	▲	▲	▲	▲	▲	▲	▲	▲	▲	▲	▲	▲	▲
100	▲	▲	▲	▲	▲	▲	▲	▲	▲	▲	▲	▲	▲	▲	▲	▲	▲	▲	▲	▲

Codici di ordinazione Order codes

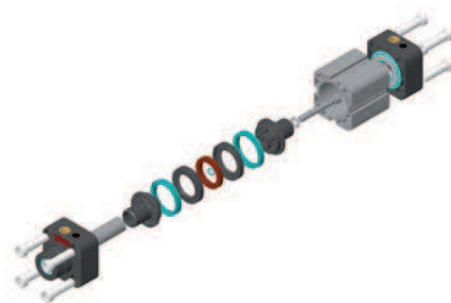
C250 DE 032 0050 M I P



I cilindri della linea 250, grazie all'accurata scelta dei materiali impiegati e al design particolarmente pulito, sono indicati per gli ambienti sporchi e polverosi per l'elevata facilità d'esecuzione delle operazioni di pulizia.

I cilindri pneumatici di questa linea sono caratterizzati da testate in tecnopolimero termoplastico ad alta resistenza e da una camicia in alluminio anodizzato a profilo quadro "S25" con quattro cave per l'alloggiamento a scomparsa del sensore.

Cylinders Line 250, owing to the careful selection of raw materials and definitely clean design, are suitable for applications in dirty and dusty environments thanks to the great easiness of cleaning operations. Pneumatic Cylinders Line 250 are distinguished by heads in high-resistance thermoplastic technopolymer and a square profile barrel in anodized aluminium "S25" having four slots for housing the foldaway magnetic switch.



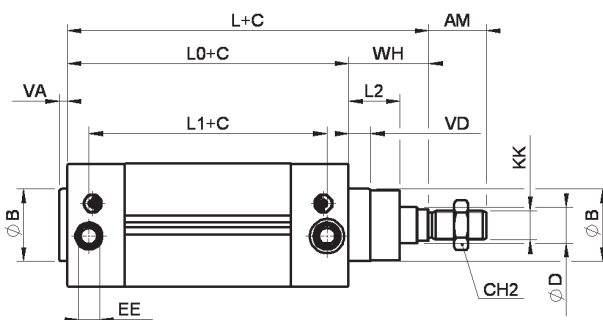
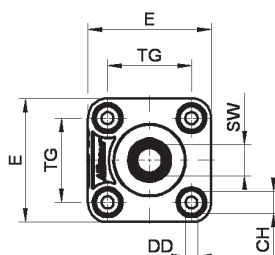
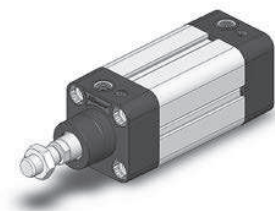
Line

250 $\varnothing 32:100$ mm

Cilindri ISO 15552 (ISO 6431)
Cylinders ISO 15552 (ISO 6431)

AIRCOMP

Cilindro Linea 250
Cylinder Line 250

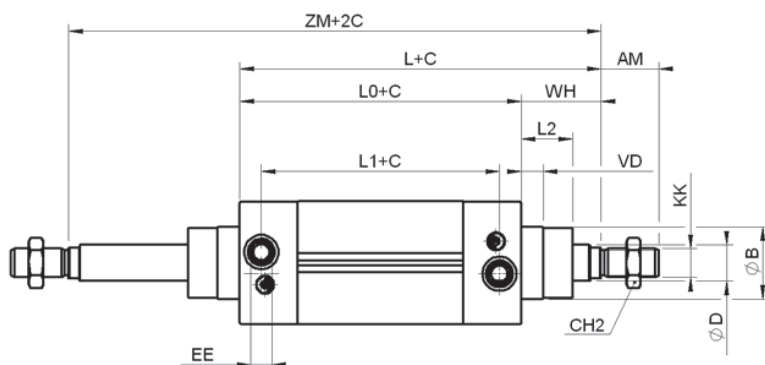
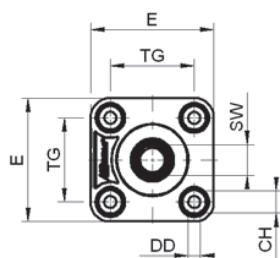
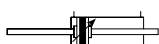
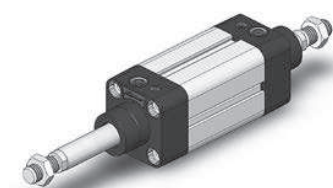


C = corsa (mm)
C = stroke (mm)

Corse standard - Standard strokes (mm)

Ø	AM	ØB	CH	CH1	CH2	ØD	DD	E	EE	KK	L	L0	L1	L2	SW	TG	VA	VD	WH
32	22	30	8	10	17	12	M6	50	G1/8"	M10x1,25	120	94	69	19	10	32,5	4	10,5	26
40	24	35	8	13	19	16	M6	55	G1/4"	M12x1,25	135	105	81	21,5	38	38	4	11	30
50	32	40	12	17	24	20	M8	68	G1/4"	M16x1,5	143	106	82	28,5	46,5	46,5	4	12,5	37
63	32	45	12	17	24	20	M8	79	G3/8"	M16x1,5	158	121	93	28,5	56,5	56,5	4	12,5	37
80	40	45	14	22	30	25	M10	98	G3/8"	M20x1,5	174	128	90	34	72	72	4	17	46
100	40	55	14	22	30	25	M10	115	G1/2"	M20x1,5	189	138	100	37,5	89	89	4	17	51

Cilindro Linea 250 - stelo passante
Cylinder Line 250 - through rod



Corse standard - Standard strokes (mm)

Ø	AM	ØB	CH	CH2	ØD	DD	E	EE	KK	L	L0	L1	L2	SW	TG	VD	WH	ZM
32	22	30	8	17	12	M6	50	G1/8"	M10x1,25	120	94	69	19	10	32,5	10,5	26	146
40	24	35	8	19	16	M6	55	G1/4"	M12x1,25	135	105	81	21,5	13	38	11	30	165
50	32	40	12	24	20	M8	68	G1/4"	M16x1,5	143	106	82	28,5	17	46,5	12,5	37	180
63	32	45	12	24	20	M8	79	G3/8"	M16x1,5	158	121	93	28,5	17	56,5	12,5	37	195
80	40	45	14	30	25	M10	98	G3/8"	M20x1,5	174	128	90	34	22	72	17	46	220
100	40	55	14	30	25	M10	115	G1/2"	M20x1,5	189	138	100	37,5	22	89	17	51	240