



Dati tecnici - Technical data

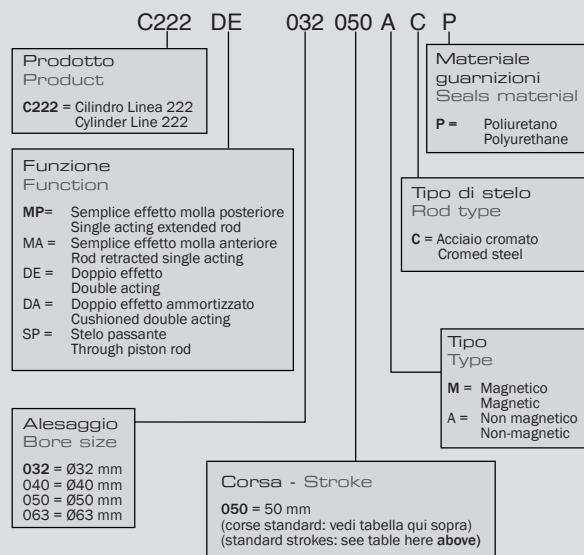
Fluido - Fluid	aria filtrata con o senza lubrificazione - filtered air with or without lubrication	
Temperatura d'esercizio - Temperature range	0°C (-20°C con aria secca) / 80°C - 0°C (-20°C with dry air) / 80°C	
Pressione di esercizio - Working pressure	Min. 1 Bar / Max 10 Bar	
Lubrificazione - Lubrication	Con aria lubrificata, la lubrificazione deve essere continua - Lubrication, if used, must be continuous	
Materiali - Materials	Camicia: AISI 304 Stelo: acciaio C40 Testate: allumino anodizzato Guarnizioni: Poliuretano	Barrel: AISI 304 stainless steel Piston rod: C40 steel Heads: anodized aluminium Sealings: Polyurethane

Corse standard - Standard strokes (mm)

Alesaggio - Bore size	10	25	50	80	100	125	160	200	250	320	400	500
32	▲●	▲●●	▲●	●■	●■	●■	●■	●■	●■	●■	●■	●■
40	▲●	▲●●	▲●	●■	●■	●■	●■	●■	●■	●■	●■	●■
50	▲●	▲●●	▲●	●■	●■	●■	●■	●■	●■	●■	●■	●■
63	▲●	▲●●	▲●	●■	●■	●■	●■	●■	●■	●■	●■	●■

▲ MP semplice effetto molla posteriore - single acting extended rod
 MA semplice effetto molla anteriore - rod retracted single acting

● DE doppio effetto - double acting
 ■ DA doppio effetto ammortizzato - cushioned double acting

Codici di ordinazione
Order codes

Il cilindro Tondo serie 222 è caratterizzato da un design essenziale, dimensioni particolarmente contenute. La gamma offerta comprende gli alesaggi 32, 40 e 63 mm, completando così il programma del Cilindro Serie 220 protagonista invece nelle applicazioni che richiedono alesaggi inferiori.

The round cylinder line 222 is characterized by essential design and very compact size.

The products range includes bore sizes 32, 40 and 63 mm, so this completes the cylinder line 220 program, which has instead the leading role in applications which requires lower bore sizes.

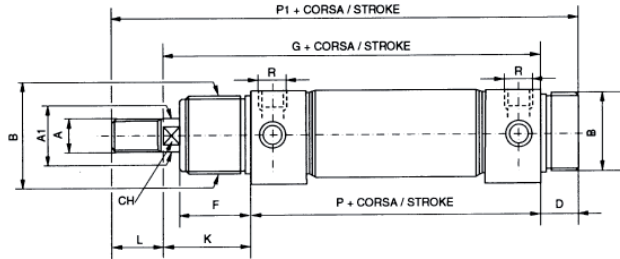
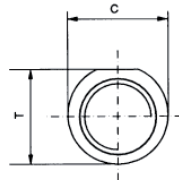
Line

222 $\varnothing 32:63$ mm

Cilindri tondi Round cylinders

AIRCOMP

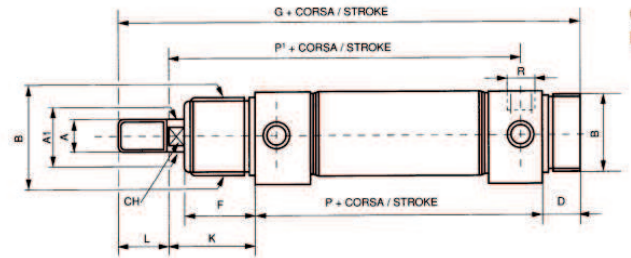
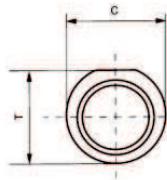
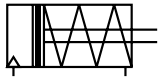
Cilindro tondo Linea 222 - doppio effetto deammortizzato
Round cylinders Line 222 - double acting cushioned



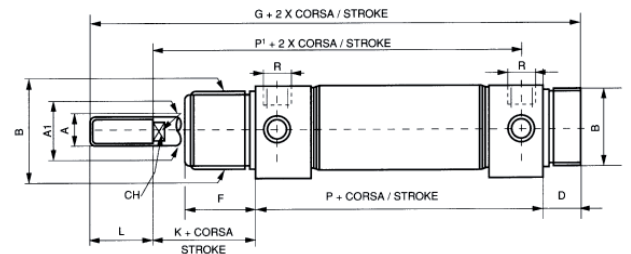
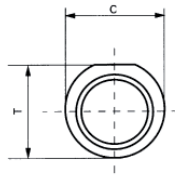
Dimensioni - Dimensions (mm)

\varnothing	A	A1	B	T	C	D	F	G	K	L	P	P1	CH	R
32	M10x1.25	12	M30x1.5	36.5	38	14	30	134	38	20	96	168	10	1/8" GAS
40	M12x1.25	16	M38x1.5	44	46	16	35	156	45	24	111	196	12	1/4" GAS
50	M16x1.5	20	M45x1.5	55	57	18	38	170	50	32	120	220	16	1/4" GAS
63	M16x1.5	20	M45x1.5	67.5	70	18	38	174	50	32	124	224	16	3/8" GAS

Cilindro tondo Linea 222 - semplice effetto molla anteriore
Round cylinders Line 222 - single acting retracted rod



Cilindro tondo Linea 222 - semplice effetto molla posteriore
Round cylinders Line 222 - single acting extended rod



Dimensioni - Dimensions (mm)

\varnothing	A	A1	B	T	C	D	F	G	K	L	P	P1	CH	R
32	M10x1.25	12	M30x1.5	36.5	38	14	30	168	38	20	96	125	10	1/8" GAS
40	M12x1.25	16	M38x1.5	44	46	16	35	196	45	24	111	144	12	1/4" GAS
50	M16x1.5	20	M45x1.5	55	57	18	38	220	50	32	120	158	16	1/4" GAS
63	M16x1.5	20	M45x1.5	67.5	70	18	38	224	50	32	124	161	16	3/8" GAS